



AGENDA

Game, Fish and Parks Commission

July 7-8, 2016

RedRossa Convention Center

808 W. Sioux Ave., Pierre, SD

Governance 8:30 AM

Call to order 1:00 PM

Division of Administration

Action Items:

1. Conflict of Interest Disclosure
2. Approve Minutes of the June 2016 Meeting <http://gfp.sd.gov/agency/commission/docs/2016/june-meeting-minutes.pdf>
3. Additional Commissioner Salary Days
4. License List Request

Information Items:

5. Department Land Acquisition Priorities and Guidelines
6. Officer Body Cameras

2:00 PM Public Hearing

Finalizations

7. Time Restrictions for State Parks
8. Bicycle Use Restriction
9. Camping Registration
10. Length of Camping Stay
11. Sage Grouse Hunting Season
12. Fall Turkey Hunting Season
13. Antelope Hunting Season
14. Allowance for Bird Processing Records to be Included in Shooting Preserve Records and Number of Processed Birds Allowed Per Package
15. Requirements and Eligibility for Disabled Veteran Pheasant Hunts

Open Forum

Division of Parks and Recreation

Information Items:

16. Capital Campout & Outdoor University Event Review
17. Parks Revenue, Camping and Visitation Reports

Division of Wildlife

Action Items:

18. 2017 Elk Raffle License

Information Items:

19. Elk habitat condition in the Black Hills
20. Elk Depredation
21. Deer fawn collaring
22. Breeding Bird Atlas
23. Winter Owl Banding in Central SD
24. West River Fisheries Management Plan Progress Report
25. License Sales and Drawings Update

Adjourn

Next meeting information:

August 4-5, 2016
RedRossa Convention Center
808 W. Sioux Ave., Pierre, SD

Minutes of the Game, Fish, and Parks Commission
June 2-3, 2016

Chairman Petersen called the meeting to order at 1:00 p.m. CST at the Watertown Convention Center in Watertown, South Dakota. Commissioners Cathy Peterson, Barry Jensen, H. Paul Dennert, Gary Jensen, Russell Olson, W. Scott Phillips, and Jim Spies were present. Secretary Kelly Hepler was present along with approximately 25 public, staff, and media.

DIVISION OF ADMINISTRATION

Approval of Minutes

Chairperson Peterson called for any additions or corrections to the April 7-8, 2016, minutes or a motion for approval.

Motion by G. Jensen with second by Spies TO APPROVE THE MINUTES OF THE JUNE 2-3, 2016, MEETING. Motion carried unanimously.

Additional Commissioner Salary Days

No additional salary days were requested

License List Requests

No new license list requests were submitted.

FY 17 Budget

Petersen provided an overview of the FY17 budget for the Department noting the salary packages which includes a 5.2 percent increase approved by the legislature. Petersen presented the Division of Administration budget at \$4,223,384 with 27.6 FTE; Division of Parks and Recreation Operations Budget at \$24,457,382 with 248.2 FTE; Parks Capitol Development Budget at \$8,748,607; the Division of Wildlife Budget at \$48,086,514 with 294 FTE; Wildlife Capitol Development Budget of \$1,772,585; and the Snowmobile Trails Budget of \$1,306,703 with 9.1 FTE.

Director Petersen indicated the Division of Wildlife Operations Budget and Capitol Development Budget along with the Snowmobile Trails Budget require Commission action and requested approval of the three budgets as presented that will be implemented July 1, 2016.

Motion by Dennert with second by G. Jensen TO APPROVE THE DIVISION OF WILDLIFE OPERATIONS BUDGET OF \$48,086,514; THE DIVISION OF WILDLIFE CAPITOL DEVELOPMENT BUDGET OF \$1,772,585; AND THE SNOWMOBILE TRAILS BUDGET OF \$1,306,703 AS PRESENTED. Motion carried unanimously.

Update on Conflict of Interest Law

Staff Attorney Richard Neill presented a powerpoint on HB1214: an act to regulate conflicts of interest for authority, board, or commission members that was passed during the 2016 legislative session. The presentation explained how the law applies to the Commissioners. The presentation specifically defined derived direct benefits, waiver requirements and penalties for violations. Additional information will be provided at the Commission Governance meeting to be held in July.

Strategic Planning Update

Staff Specialist Nancy Surprenant, Communications Director Emily Kiel and Communications Specialist Chris Hull provided an overview of the strategic planning process and timeline. Surprenant provided an overview of the planning process indicating work completed thus far and where the Department is in the planning process. Kiel provided the draft mission, vision, values that will be further defined at the upcoming planning team meeting on June. Kiel also presented the draft goals that have been crafted from the April meeting. She indicated the planning team will work to add objectives and measurable outcomes within each goal at the upcoming June meeting. Hull further provided detail as to what the plan will mean for staff and how they will fit into the goals to be a part of the agencies mission. Hull also indicated the plan will also serve as a document to drive our budget.

PROPOSALS

Time Restrictions for State Parks

Bob Schneider, Deputy Director presented the proposed changes to the use of parks and public lands adding the language "use or occupy" to be clear in addressing people who continue to use an area.

Motioned by G. Jensen seconded by Olson TO APPROVE THE RECOMMENDED CHANGE TO TIME RESTRICTIONS IN STATE PARKS AS PROPOSED. Motion carried unanimously.

Bicycle Use Restriction

Schneider presented the recommended change to repeal the rules applying to bicycle use in Newton Hills and Lewis and Clark State Parks as it is redundant and only applies to two state parks.

Motioned by Olson, seconded by Spies TO APPROVE THE RECOMMENDED CHANGE TO REPEAL THE RULE IN REGARDS TO BICYCLE USE IS SPECIFIC PARKS ARE PROPOSED. Motion carried unanimously.

Camping Registration

Lynn Spomer, program specialist presented the recommended changes to the camping registration procedures to reflect current practices with the on-line point of sale system as specified below.

~~Display of registration card.~~ Upon receipt of the daily camping permit fee, the department shall provide each camper unit with a registration card. The card shall be placed on the pad post specifically provided for that purpose or conspicuously displayed otherwise if pad posts are not provided. The receipt section of the registration card shall show the amount paid and the date and shall be signed by a department representative.

~~All campers must reserve a campsite prior to occupying the site in the park. Reservations can be placed either by using the on-line service at campsd.com or by calling 1-800-710-2267 or using the park reservation hot phone. Campers must be in possession of their confirmation information for that site. Individual campgrounds may have additional check-in procedures that the campers must follow.~~ Self-registration may be used at any campground. At campgrounds using this a self-registration system, the department shall post camping fees and provide registration forms for campers to complete. Each camper shall insert the correct fee in the envelope provided with the form and insert the envelope in the security box provided. The camper shall display the provided registration slip card as described in this section on a provided site post or in a conspicuous place.

Any camper unit desiring to extend occupancy of a site beyond the nights for which the camper unit is paid, up to the limits set in § 41:03:01:15, shall ~~reregister at the entrance booth~~ may extend the reservation by 4:00 p.m. on that last day and pay the camping fees for the additional nights desired, only if the site is available for the duration of the extended stay, except at Custer State Park where a camper shall ~~reregister~~ extend the reservation by noon on the last day. A Camper staying on a Same-Day reservation site located at Center Lake in Custer State Park and the Yankton section of Lewis and Clark Recreation Area must extend the reservation prior to 12:00 AM (Midnight) on the last registered night's stay.

Motioned by B. Jensen, seconded by Spies TO APPROVE THE CHANGES TO CAMPING REGISTRATION PROCEDURES ARE PROPOSED. Motion carried unanimously.

Length of Camping Stay

Schneider presented the recommended changes to the length of camping stay as specified below.

Nonprofit youth groups with adult supervision may reserve a designated group camping area for up to ~~15~~ 14 consecutive days ~~nights.~~

A person may reserve an available campsite at any state park, recreation area, or lakeside use area for up to ~~15~~ 14 consecutive days. ~~nights.~~ Once the person has occupied the campsite the 14th night, they must remove their camping unit from the state park, recreational area, or lake side use area, by check-out time the next day, for at least one night, before reserving that site, or another site, at that location.

Motioned by B. Jensen seconded by Spies to approve the proposed changes to the length of camping stay as presented. Motion carried unanimously.

Sage Grouse Hunting Season

Program administrator Chad Switzer presented the recommended changes to the sage grouse hunting season as specified below.

1. Change the season dates from the Wednesday and Thursday prior to the start of the firearm antelope season to a two-day season beginning on the third Saturday of September.
2. Offer 40 resident-only hunting permits available through a limited drawing. Applicants will need to have a small game or combination license to be eligible for the drawing.
3. Permits remaining after the first drawing will be available to resident and nonresident hunters on a first-come first-serve basis.

Motioned by B. Jensen seconded by Dennert TO APPROVE THE PROPOSED CHANGES TO THE SAGE GROUSE HUNTING SEASON AS RECOMMENDED. Roll call vote: Dennert-yes; B. Jensen-yes; Gary Jensen-yes; Olson – yes; Phillips-no; Spies - no; Peterson-yes. Motion passed with five yes votes and two no votes.

Fall Turkey Hunting Season

Switzer presented recommended changes to the fall wild turkey hunting season as detailed below.

1. For limited draw units, offer 105 less resident one-tag licenses for Prairie Units compared to 2015.
2. Dissolve the West River Prairie Unit and align fall units with spring unit boundaries where licenses will be allocated. For 2016, this will include Unit 30A (Gregory County); Unit 50A (Mellette County), and Unit 53A (Perkins County and that portion of Meade County north of US Hwy. 212).
3. Change the name of Unit NE1 (Northeast SD) to Unit 48A (Marshall and Roberts counties) and retain the same geographic area open for fall season.
4. Remove the language in administrative rule depicting the license type and number of licenses from each hunting unit.

Motioned by Spies seconded by Phillips TO APPROVE THE CHANGES TO THE FALL WILD TURKEY HUNTING SEASON AS PRESENTED. Motion carried unanimously.

Switzer presented the recommended changes to the fall turkey hunting license allocations with changes for multiple units and the elimination of units where no licenses were allocated.

Motioned by Dennert seconded by G. Jensen TO APPROVE THE NUMBER OF FALL TURKEY HUNTING LICENSE ALLOCATED FOR EACH UNIT AS PROPOSED. Motion carried unanimously.

Antelope Hunting Season

Andy Lindbloom, senior biologist provided a powerpoint presentation indicating status to project populations and population estimates from aerial surveys conducted.

Switzer presented the recommended change to the antelope hunting season as detailed below.

1. Add language in administrative rule which clarifies that if no licenses are allocated for a specific hunting unit, that unit is dissolved for the purposes of designating areas open to hunting under the provisions of codified law which describes reduced fee licenses for landowner on own land licenses.
2. Remove the language in administrative rule depicting the license type and number of licenses from each hunting unit and substitute with the cumulative number of single and multiple tag licenses.

Motioned by Spies, seconded by Olson TO APPROVAL THE RECOMMENDED CHANGES TO THE ANTELOPE HUNTING SEASON AS PROPOSED. Motion carried unanimously.

Switzer presented the antelope license allocations with no changes for any units thus the same number of license will be allocated for 2016 as was 2015.

Motioned by Dennert seconded by Spies TO APPROVE THE NUMBER OF ANTELOPE LICENSE ALLOCATED FOR EACH UNIT AS PROPOSED. Motion carried unanimously.

Authorization for Fisheries Management on Impounded Waters Located on Private Land

John Lott, Fisheries Chief provided a powerpoint to the Commission detailing the proposal to create a new rule to provide authorization for landowners to perform fisheries management activities on created, man-made impoundments on land they own or lease.

Motioned by G. Jensen, seconded by Spies to table the creation of private fisheries management. Roll call vote: Dennert-yes; B. Jensen-no; Gary Jensen-yes; Olson – no; Phillips-yes; Spies -yes; Peterson-no. Motion failed with four yes votes and three no votes.

Lott withdrew the proposal and no further action was taken.

Allowance for Bird Processing Records to be Included in Shooting Preserve Records and Number of Processed Birds Allowed Per Package

Andy Alban, program administrator presented the recommended changes to exempt licensed private shooting preserves from certain records requirements for wildlife processing facilities and increase the number of birds taken on a licensed private shooting preserve that may be packaged to two without identifying plumage.

Motioned by Olson, seconded by Spies TO APPROVE THE PROPOSAL AS PRESENTED. Motion carried unanimously.

Requirements and Eligibility for Disabled Veteran Pheasant Hunts

Alban provided the recommend changes to eligibility requirements for disabled veterans to hunt pheasants to align with legislation passed in 2016 per senate bill 71as specified below

1. A special pheasant hunting season for qualifying disabled veterans may be established anytime during the ~~month~~ months of October or November upon application by a sponsoring non-profit organization. A special pheasant season for disabled veterans is valid only on private lands.
2. ~~The season length for a special pheasant season for disabled veterans is one day.~~ The shooting hours for a special pheasant season for disabled veterans are sunrise to sunset except that after the start of the regular state pheasant season established pursuant to chapter 41:06:08, shooting hours are the same as those established for the regular state pheasant season. The bag limit is three cock pheasants. No hunting license or fee is required of qualifying disabled veterans.
3. ~~A person is eligible to hunt in a special pheasant season for disabled veterans if the person is a veteran who is confined to a wheelchair. Repealed.~~

Motioned by Spies with second by Phillips TO APPROVE THE PROPOSAL THAT PERTAINS TO THE PHEASANT HUNTING SEASON FOR DISABLED VETERANS AS PRESENTED. Motion carried unanimously.

Public Hearing

The Public Hearing began at 2:00 p.m. and concluded at 2:05 p.m. and the minutes follow these minutes.

FINALIZATIONS

Black Hills Deer Hunting Season

Switzer presented recommended changes to the Black Hills Deer Hunting Season to offer 400 more resident antlerless whitetail licenses and 32 more nonresident antlerless whitetail licenses than in 2015. Other changes include modifying the Black Hills antlerless deer management units and removing language from administrative rule depicting the license type and number of license from each hunting unit.

Motioned by B. Jensen with second by G. Jensen TO APPROVE THE FINALIZATION FOR BLACK HILLS DEER HUNTING SEASON AS PRESENTED. Motion carried unanimously.

East River Deer Hunting Season

Switzer presented the recommended changes in the east river deer hunting season as specified below

1. Offer 4,220 less one-tag licenses, 5,075 more two-tag licenses (10,150 tags), and 1,400 more 3-tag licenses (4,200 tags) compared to 2015.
2. Establish Unit ERD-12B as an antlerless deer unit within Bon Homme County described as that portion of Bon Homme County south of SD Highway 50 and east of SD Highway 37 (see map).
3. Remove the language in administrative rule depicting the license type and number of licenses from each hunting unit.

Motion by Dennert with second by G. Jensen TO AMEND THE PROPOSAL TO INCLUDE SD HIGHWAY 52 WITHIN BON HOMME COUNTY. Motion carried unanimously.

Motioned by Dennert with second by B. Jensen TO FINALIZE CHANGES TO THE EAST RIVER DEER HUNTING SEASON AS RECOMMENDED. Motion carried unanimously.

West River Deer Hunting Season

Switzer provided the recommend changes to west river deer hunting season as specified below

1. Adjust resident license numbers by decreasing one-tag licenses by 2,095 and increasing two-tag licenses by 3,800 compared to 2015.
2. Adjust nonresident license numbers by decreasing one-tag licenses by 168 and increasing two-tag licenses by 304 compared to 2015.
3. Remove the language in administrative rule depicting the license type and number of licenses from each hunting unit.

Motioned by Phillips with second by B. Jensen TO FINALIZE THE CHANGES TO THE WEST RIVER DEER HUNTING SEASON AS RECOMMENDED. Motion carried unanimously.

National Wildlife Refuge Deer Hunting Season

Switzer presented the recommended changes to the national wildlife refuge deer hunting season to offer 10 less resident and 1 less nonresident any deer licenses for RFD-LC2 in Lacreek National Wildlife Refuge and remove the language in administrative rule that depicts the license type and number of licenses for each hunting unit.

Motioned by Phillips with second by G. Jensen TO FINALIZE THE CHANGES TO THE NATIONAL WILDLIFE REFUGE DEER HUNTING SEASON AS RECOMMENDED. Motion carried unanimously.

Archery Deer Hunting Season

Switzer provided the recommend changes to archery deer hunting season as specified below

1. For Unit ARD-LM1, close units 39A and 45B and open units BD1, BD2, 01A, 06A, 07B, 12B, 27B, 35A, 35C, 43A, 44A (north of 273rd Street), 46A, 49A, 49B, 52A, and 53A.
2. Increase the number of "antlerless whitetail deer" archery access permits from 20 to 25 for the Adams Homestead and Nature Preserve.
3. Remove the language in administrative rule depicting the license type and number of licenses from each hunting unit and the number of access permits from each designated area.

Motioned by B. Jensen with second by Dennert TO FINALIZE THE CHANGES TO THE ARCHERY DEER HUNTING SEASON AS RECOMMENDED. Motion carried unanimously.

General Muzzleloading Deer Hunting Season

Switzer provided the recommend changes to archery deer hunting season as specified below

1. For Unit MZD-LM1, close units 39A and 45B and open units BD1, BD2, 01A, 06A, 07B, 12B, 27B, 35A, 35C, 43A, 46A, 49A, 49B, 52A, and 53A.
2. Remove language in administrative rule depicting the license type and number of licenses from each hunting unit.

Motioned by G. Jensen with second by Spies TO FINALIZE THE CHANGES TO THE GENERAL MUZZLELOADING DEER HUNTING SEASON AS RECOMMENDED. Motion carried unanimously.

Custer State Park Deer Hunting Season

Switzer provided the recommended changes to the Custer State Park deer hunting season to offer 10 more antlerless whitetail deer muzzleloader license repeal unit CUD-ZZ1 and remove the language in administrative rule depicting the license type and number of licenses from each hunting unit.

Motioned by Dennert with second by B. Jensen TO FINALIZE THE CHANGES TO THE CUSTER STATE PARK DEER HUNTING SEASON AS RECOMMENDED. Motion carried unanimously.

Deer Hunting Seasons – Hunting Unit License & Access Permit Allocations

Deputy Director Tom Kirschenmann presented the number and type of hunting licenses in each unit for the Black Hills, East River, West River, Refuge, Muzzleloader, and Custer State Park Deer Hunting Seasons and allocations of Archery Deer Access Permits.

Motioned by B. Jensen with second by G. Jensen TO FINALIZE THE LICENSE ALLOCATIONS AND ACCESS PERMITS AS RECOMMENDED. Motion carried unanimously.

Application for License

Kirschenmann presented a change to the application for license to allow the Department to make free antlerless deer license available to qualifying farmers and ranchers in designated area in accordance with current harvest management objectives.

1. Repeal language referencing licenses available after second lottery drawing from the previous year and to those counties where antlerless archery and muzzleloader licenses are restricted.
2. Make "antlerless whitetail deer" licenses available to those eligible applicants in hunting units which offer a deer license with multiple tags for antlerless deer (e.g. double or triple "any antlerless deer" or "antlerless whitetail deer" tags) in the lottery drawing for the East River and West River deer seasons (see attached map).

Motioned by Olson with second by Dennert TO FINALIZE THE CHANGES TO ANTLERLESS DEER LICENSES FOR LANDOWNERS AS RECOMMENDED. Motion carried unanimously.

OPEN FORUM

Larry Burg, Grasslakes Conservation Club spoke to the Commission to express his organizations appreciation for the work done by former Commissioner John Cooper and the good working relationship they had.

DIVISION OF PARKS AND RECREATION

Angostura/Shadehill Market Rent Survey Update

Assistant Director Al Nedved provided follow up on the market rent survey that was conducted by the Bureau of Reclamation for all private/exclusive use seasonal cabin permits at Angostura and Shadehill.

Nedved noted rates determined based upon appraisal were \$2,700 for Angostura trailers, \$2,400 for Angostura cabins and \$2,100 for Shadehill which is significantly higher than current rates. All permit holders were notified and given an opportunity to provide input and will be further informed though public meetings scheduled for June 6th and 16th. Permit holders also have the option of organizing and conducting their own appraisal to challenge the new rates.

Oahe Downstream Concession

Nedved provided an update on the Oahe Downstream concession indicating that after the third issuance of a prospectus to sale Oahe Marina at the reduction in price from \$641,000 to \$625,000 no proposals were received. Nedved further explained that any further attempts to sell the Oahe Downstream Concession will require a new appraisal and that the current owner will continue to operate per the terms of the concession agreement. It was also noted the current concessionaire has not provided any further indication on his plans at this time.

CHM Study Update

Nedved provided an update in regards to the concession study the department has been working on for several months with CHM Government Service to obtain a better understanding of each particular business model. The contract was recently amended a second time to include two additional concessionaires Angostura Resort and Fort Randall Marina to encompass all the concessionaries excluding Custer State Park. Nedved stated the department expects an executive summary in the next few weeks that will contain recommendations on how to move forward with concession contracts.

Parks Revenue, Camping and Visitation Reports

Director Ceroll provide the parks revenue report noting the visitation report has not been generated as time being it is only the 2nd of June. Ceroll stated the revenue comparison by item indicated an overall 10 percent increase in revenue and that the comparison by district indicated weather was a major factor. The camping unit comparison by district show a 12 percent increase with a good start to the camping season with memorial weekend.

DIVISION OF WILDLIFE

Turkey Management Plan

Switzer provided the Commission copies of the draft wild turkey management plan noting minimal changes have incorporated since the last meeting. Major points indicated by Switzer were continued work with private landowners, offering as much public access as possible, dealing timely and effectively with landowners on depredation issues, and working with landowners and public on captive turkey release.

Motioned by Spies with second by G. Jensen TO ADOPT THE TURKEY MANAGEMENT PLAN AS PRESENTED. Motion carried unanimously.

Aquatic Invasive Species Management Plan

Lott indicated zebra mussels were found in McCook Lake in addition to Lewis and Clark. Lott explained McCook is an oxbow lake, but is surrounded by sand so they have a system where they pump water into the lake and could possibly have been the source of AIS.

Regional Supervisor Emmett Keyser reported on a boat compliance check recently held with 80 contacts made with boaters resulting in 16 citations issued and 4 written warnings. Staff will continue communication and compliance efforts and increase awareness with recreational boaters. Keyser noted key points for boaters is they need to pull plug on boat and live well and keep the plug out while transporting the boat allowing time to dry out then not putting the plug back in until just prior to reentering the water.

Lott also provided an explanation of current management tools being used and research being done.

Motioned by Spies with second by B. Jensen TO ADOPT THE AQUATIC INVASIVE SPECIES MANAGEMENT PLAN AS PRESENTED. Motion carried unanimously.

Wetlands America Trust Addition to Swan Lake GPA - Clark County

Paul Coughlin, Habitat Program Administrator provided a request to acquire the Wetlands America Trust Addition to Swan Lake GPA located five miles northeast of Bradley in Clark County. The property consists of 240 acres at a cost of \$511,000 to be utilized as a game production area for wildlife habitat management and public hunting access.

Motion by Spies with second by B. Jensen TO ADOPT RESOLUTION 16-07 (Appendix A) AUTHORIZING AND CONFIRMING THE PURCHASE OF 240 ACRES IN CLARK COUNTY. Motion carried unanimously.

Wetlands America Trust Addition to Odessa #1 GPA – McPherson County

Coughlin provided a request to acquire the Wetlands America Trust Addition to Odessa #1 GPA located nine miles southwest of Long Lake in McPherson County. The

property consists of 80 acres at a cost of \$84,000 to be utilized as a game production area for wildlife habitat management and public hunting access.

Motion by Dennert with second by G. Jensen TO ADOPT RESOLUTION 16-08 (Appendix B) AUTHORIZING AND CONFIRMING THE PURCHASE OF 80 ACRES IN CLARK COUNTY. Motion carried unanimously

Land Acquisition Projects

Coughlin provided an update on the pending sale of GFP property located within the City of Deadwood. He indicated that legislation passed authorizes the Department to sell two small properties in Deadwood specifically to the City of Deadwood that is developing a visitor's center. The two properties are a currently a parking lot and the area near the location of the Wild Bill statute. The Department has received appraisals recently and is working on a sale price.

Sportsmen Against Hunger

Kirschenmann provided the 2015 Sportsmen Against Hunger Report to the Commission noting the Department has a 10 year partnership with the organization. Kirschenmann provided a summary of how organization came to be beginning with deer donations while overpopulated. He indicating most donations are received through West River, east river and archery antlerless deer hunting seasons. Kirschenmann explained the funding process noting the \$50,000 offered by GFP was only utilized for Ron Fowlers contract and the funds allocated by sportsman via the license application checkoff.

Commissioner G. Jensen noted his involvement with Sportsmen Against Hunger as the Commission liaison.

Motioned by Phillips with second by Dennert TO APPROVE THE CONTINUED PARTNERSHIP WITH SPORTSMEN AGAINST HUNGER FOR THE NEXT FISCAL YEAR WITH AN ALLOCATION OF \$50,000 FOR CONTRACT AND CERTIFICATES IF NEEDED. G. Jensen abstained. Motion carried.

Landowners and Hunter Opinion Survey of Deer Management

Cynthia Longmire, division staff specialist presented the results of the landowner and hunter opinion survey of deer management. She explained the design and methods used to set up the survey with a sample size of 6,300 landowners who owned 100 or more acres. Questions consisted of number of whitetail deer, mule deer, statewide and regionally, season lengths and dates and habitat management. Results indicated half of the landowners surveyed have hunted in the last year and a majority of the landowners who hunted also allowed relatives to hunt their land. All landowners indicated conflicts with hunters such trespassing, damage to property and harassed livestock. And a vast majority experienced crop and property damage.

Longmire stated the hunter survey as a random sample of 4,000 resident deer applicants statewide from the previous season with a response rate of 64 percent. Questions asked of hunters pertained to how long they had been hunting deer in South

Dakota, ranking of season in order of preference, rating of conditions in the areas they hunt the most, number of hunters in the field, number of deer, private land access, season lengths and dates and limited access units. Overall the survey indicated hunters are satisfied with the current system.

Sage Grouse Management Plan Update

Travis Runia, senior biologist presented a powerpoint to update the Commission on the sage grouse management plan. Information provided included challenges specifically loss and fragmentation of habitat, isolation and disease, partnerships and collaborations, and research. Runia noted population monitoring indicates levels are up to recommend opening conservative hunting for a 2 day season in Harding and Butte Counties. He also indicated the 2007 and 2008 seasons had approximately 50 hunters resident and nonresident and that it was difficult to acquire success results.

Private Shooting Preserve Update

Alban presented the Commission statistics on private shooting preserves. Specifics included the total number of preserves by year, pheasant harvest and release records, other game bird harvest and release records for 2015 and number of preserves by size for the 2016-2017 season. Alban explained licenses are now available for a one or three year basis. He also noted one denial for a private shooting preserve was issued. He also stated harvests increased last season.

Brook Brown Boating Officer of the Year Award

Brandon Gust, presented the 2016 Brook Brown Boating Officer of the Year Award to Bryce McVicker, conservation officer stationed in Watertown. McVicker was recognized for the outstanding he has done in the field of boating law enforcement to ensure the boaters of South Dakota have a safe and enjoyable place to recreate and preserving public safety. He also serves as a department boating enforcement instructor.

2016 License Sales Update

Simpson provided the license sales report as of May 27, 2016 for all license types' resident and nonresident noting general license sales are consistent with last year.

Simpson also reported on the recent drawings for big horn sheep, mountain goat and elk licenses indicating extreme demand in specific areas. Some of those areas are elk tags in Custer State Park where only 8 licenses are available and just under 9,000 applications were received and Black Hills elk for unit 2 bull tags. Also discussed was the preference point system and comments from the public.

Adjourn

Motioned by Dennert with second by Phillips TO ADJOURN THE MEETING. Motion carried unanimously and the meeting adjourned at 10:30 a.m.

Appendix A

RESOLUTION 16 - 07

WHEREAS, the Department of Game, Fish, and Parks (GFP) has expressed an interest in acquiring real property presently owned by Wetlands America Trust, Inc., One Waterfowl Way, Memphis, Tennessee 38120, which property is described as:

Northeast Quarter (NE $\frac{1}{4}$) and the North Half of the Southeast Quarter (N $\frac{1}{2}$ SE $\frac{1}{4}$) of Section Sixteen (16) in Township One Hundred Nineteen (119) North, Range Fifty-six (56) West, 5th P.M., Clark County, SD, containing 240, acres more or less and hereto referred to as the WETLANDS AMERICA TRUST PROPERTY; and

WHEREAS, said property is to be acquired by and utilized by GFP as a Game Production Area; and

WHEREAS, SDCL 41-4-1.1 requires that before GFP acquires and purchases property, GFP must notify owners of land located adjacent to the property sought to be acquired by publishing notice of the same once in each legal newspaper of the county in which the property to be purchased is located; and

WHEREAS, GFP has published the required legal notice at least thirty (30) days prior to the date of action by the Commission authorizing the intended purchases, which notice included the time and location of the meeting at which Commission action is expected and by giving notice of instructions for presenting oral and written comments to the Commission; and

WHEREAS, the Commission has reviewed any and all comments that may have been received relative to the intended purchase and after consideration of the same, the Commission approves the purchase of said property for use as a Game Production Area;

NOW, THEREFORE, BE IT RESOLVED, that GFP is authorized to complete negotiations for the purchase of the WETLANDS AMERICA TRUST PROPERTY and execute and consummate an agreement with Wetlands America Trust, Inc., which is acceptable to GFP to acquire by purchase, at the price of \$511,000.00, the WETLANDS AMERICA TRUST PROPERTY for use as a Game Production Area.

Appendix B

RESOLUTION 16 - 08

WHEREAS, the Department of Game, Fish, and Parks (GFP) has expressed an interest in acquiring real property presently owned by Wetlands America Trust, Inc., One Waterfowl Way, Memphis, Tennessee 38120, which property is described as:

North Half of the Northeast Quarter (N½NE¼) of Section Twenty-six (26) in Township One Hundred Twenty-seven (127) North, Range Seventy-one (71) West, 5th P.M., McPherson County, SD, containing 80, acres more or less and hereto referred to as the WETLANDS AMERICA TRUST PROPERTY; and

WHEREAS, said property is to be acquired by and utilized by GFP as a Game Production Area; and

WHEREAS, SDCL 41-4-1.1 requires that before GFP acquires and purchases property, GFP must notify owners of land located adjacent to the property sought to be acquired by publishing notice of the same once in each legal newspaper of the county in which the property to be purchased is located; and

WHEREAS, GFP has published the required legal notice at least thirty (30) days prior to the date of action by the Commission authorizing the intended purchases, which notice included the time and location of the meeting at which Commission action is expected and by giving notice of instructions for presenting oral and written comments to the Commission; and

WHEREAS, the Commission has reviewed any and all comments that may have been received relative to the intended purchase and after consideration of the same, the Commission approves the purchase of said property for use as a Game Production Area;

NOW, THEREFORE, BE IT RESOLVED, that GFP is authorized to complete negotiations for the purchase of the WETLANDS AMERICA TRUST PROPERTY and execute and consummate an agreement with Wetlands America Trust, Inc., which is acceptable to GFP to acquire by purchase, at the price of \$84,000.00, the WETLANDS AMERICA TRUST PROPERTY for use as a Game Production Area.

Public Hearing Minutes of the Game, Fish and Parks Commission
June 2, 2016

The Public Hearing Officer Scott Simpson began the public hearing at 2:00 p.m. at the Convention Center in Watertown, South Dakota with Commissioners Peterson, Jensen, Jensen, Olson, Phillips, Dennert, and Spies present. Simpson indicated written comments were provided to the Commissioners prior to this time and will be reflected in the Public Hearing Minutes. Simpson then invited the public to come forward with oral testimony.

Deer Hunting Seasons

No oral testimony was received.

Written testimony:

Roger Wiltz, Wagner "Friends and I have hunted the same Corson Co. ranch since 1969. The ranchers have become family, and the hunt is a social event. Last year my partner didn't draw a tag. Granted, we both applied for "any deer," and I hit "any whitetail" on my second choice. Mike didn't. Now that the deer are back, please consider reinstating a third unit of "any antlerless whitetail." We want to hunt together more than kill a deer. Thanks for the consideration."

Jim Gruber, Esteline "As an avid bow hunter and land owner i can see little to be gained by going back to the additional antlerless system.. the herd has not grown much if any from the previous years.. and yet, if you deem we need to increase the harvest at least have the season end on the dec. 31st.. it does not need to run into january, and if anything all it really does is increase the road hunting antics of many who do not want to walk for anything.. and as a land owner by jan. 1st. i have had enough of that."

Areas Open for Free Landowners Antlerless Deer Licenses

No oral or written testimony was received.

The public Hearing concluded at 2:17 p.m.

Respectfully Submitted,

Kelly R. Hepler, Department Secretary

GAME, FISH & PARKS

523 East Capital
Pierre, SD 57501
(605)773-4510
Fax (605)773-6245

John.Sayler@state.sd.us

4

REQUEST FOR LISTS OF LICENSE HOLDERS

Application

Type of List Requested: South Dakota Resident Small Game License

Number of licenses in list: Amount available minus Mitchell and surrounding areas (Alexandria, Letcher, Plankington, Ethan, Etc.)

Name of Person, Entity, or Organization requesting list:
Precision Reloading of South Dakota, LLC.

Address of Person, Entity, or Organization:
1700 W. Cedar Ave Suite B, Mitchell, SD 57301

How would you like your list sent to you: (email or disk): Email

Email Address: Keith@precisionreloading.com

Phone Number: 605-996-9984 / 800-223-0900

Purpose for which list will be used:
To mail postcard for Reloading Supplies and Equipment with special offer.

This list is Names and Mailing Addresses ONLY

The sale of lists by the Department of Game, Fish & Parks is authorized by SDCL 1-27-1 and ARSD 41:06:02:04, 05 and 06. The fee for a Game, Fish & Parks Commission approved exception is \$100, otherwise the fee is \$100 per thousand names or a minimum of \$100 whichever is greater.

Unless requested and approved as part of this request, the license list will not include anyone under eighteen years of age. Names are for one-time use only and are to be used only by the person, entity or organization approved per this request.

Keith Hagan
Authorized Signature of Purchaser

6-16-16
Date

Date of Commission Action



DEPARTMENT OF GAME, FISH AND PARKS

Foss Building
523 East Capitol
Pierre, South Dakota 57501-3182

Land Acquisition Priorities and Guidelines

Last Updated :: July 1, 2016

The South Dakota Department of Game, Fish and Parks offers diverse opportunities for people to experience the outdoors. The foundation of these opportunities is the special lands and waters entrusted to the Department. These lands are classified and managed accordingly by the Divisions of Wildlife and Parks and Recreation.

Division of Wildlife

- Game Production Areas
- Water Access Areas

Division of Parks and Recreation

- State Parks
- Recreation Areas
- Lakeside Use Areas
- Nature Areas
- Trails

Today

Private property dominates the South Dakota landscape, accounting for more than 80 percent of the state's acreage, and is important in conserving our natural resources. Every year, hundreds of thousands of outdoor enthusiasts enjoy the bounty of our vast natural resources - a strong testament to the high quality of land stewardship provided by South Dakota landowners.

South Dakota's public lands and waters provide residents and visitors with a great number of outdoor recreational opportunities; as well as, places to enjoy wildlife and the beauty of the South Dakota landscape. In addition to recreation, Department lands provide high quality habitat for hundreds of species of resident and migratory wildlife, including rare and declining species.

Department lands are an important part of the South Dakota landscape, as they exist exclusively for the use and enjoyment of all citizens. Found across the vast South Dakota landscape, these areas often provide a county or region with its most important and readily available outdoor recreation opportunities.

Tomorrow

This document serves to guide the Department in its land acquisition activities over the next decade. In doing so, it sets forth and describes the Department's land acquisition guiding principles and priorities. These guidelines and priorities are based upon the expertise of Department staff, and the input of users and other interests who have shared their thoughts about Department land acquisition direction over the years.

When the Department began purchasing public hunting lands in the late 1930s, efforts were centered on obtaining Game Production Areas and Water Access Areas to provide management and recreational opportunities for individual species rather than specific habitat types. Over time the Department shifted its land acquisition efforts to securing native habitat types that support resident and migratory wildlife species and preserving areas of historical, geological, and natural significance. Eventually parcels were also added that improve management efficiency and effectiveness, while still providing a variety of recreational opportunities. This approach has resulted in a widely distributed land inventory of high quality habitat types, preservation areas, and recreation sites that are both biologically sound and publicly acceptable.

Land Acquisition Guidelines

The Department utilizes the following guidelines when conducting land acquisitions:

Regarding process, the Department will:

- Utilize existing and long-standing land acquisition procedures, based in Department Policy, South Dakota Administrative Rule, and South Dakota Codified Law, in acquiring property.
- Work only with willing sellers.
- Utilize a property's market value, as determined by an independent appraisal, in negotiating a purchase price.
- Ensure that property appraisals conducted on behalf of the Department are completed by State-Certified General Appraisers and conform to Uniform Standards of Professional Appraisal Practice (USPAP) or Uniform Appraisal Standards for Federal Land Acquisitions (UASFLA) as applicable.

Regarding economics, the Department will:

- Carefully consider the economic impacts of proposed land acquisition projects, and champion only those projects with minimal financial burdens and maximum conservation and public use benefits.
- When available as an option, evaluate the costs/benefits of leasing a property for wildlife habitat management and public access opportunities over purchasing it.
- Identify anticipated land management operation, maintenance, and development needs and their associated costs, and develop strategies for meeting these needs prior to acquiring new properties.
- Utilize financial support offered from partners for acquisition and management activities, making the most efficient use of these resources as potential matching funds through grant

programs such as the Wildlife and Sport Fish Restoration program and the Land and Water Conservation Fund.

Regarding land ownership and stewardship, the Department will:

- Strive to be a good neighbor in communities in which it owns land, and involve communities when discussing land management issues.
- Work to identify existing Department lands that could be considered surplus to its mission and potentially available for disposal via exchange or sale.
- Utilize carefully evaluated land exchanges above the sale of surplus lands to improve management efficiency and effectiveness in addition to ensuring overall wildlife conservation values and public use opportunities are maintained.
- Ensure compliance with all applicable state and federal laws, rules, regulations, and policies regarding disposal of Department lands.
- Only consider accepting land donations that serve its mission, meet or exceed standards for state ownership, and do not impose significant management, liability, or financial concerns on the Department.

Land Acquisition Priorities

Additions to existing: Game Production Areas | Water Access Areas | State Parks | Recreation Areas | Lakeside Use Areas

- Parcels that improve public use on and access to existing Department lands.
- In-holding and round-out parcels that consolidate or connect existing Department lands or other public lands open to hunting, fishing, or other recreational related activities.
- Parcels that facilitate more efficient and effective wildlife habitat or recreation management and development activities on existing Department lands.
- Parcels that provide buffers or are necessary for maintaining or enhancing the integrity of existing Department lands.

Lake Access | River Access

- Parcels necessary to address public access needs to newly developed fisheries and popular water-based recreation resources.
- Parcels that can replace currently obsolete or deteriorating resources due to forces such as erosion, sedimentation, landslides, flooding, drought, etc.

Habitat types | Landscapes | Recreation | Educational Opportunities

- Parcels necessary to expand existing or develop new administrative facilities.
- Parcels containing significant habitat and hunting opportunities for pheasants.
- Parcels containing significant wetland habitat complexes.
- Parcels that represent intact native prairie grassland systems.
- Parcels of undeveloped lakeshores and riparian corridors.
- Parcels associated with planned and coordinated flood mitigation buyout projects.
- Parcels containing rare, unique, or significant plant or animal species or their habitats.
- Parcels necessary to preserve sites of geological, historical, natural, and cultural significance to the people of South Dakota.
- Parcels that have potential for high demand levels of outdoor recreation such as hunting, fishing, camping, trails, wildlife observation, water-based recreation.

GAME, FISH AND PARKS COMMISSION ACTION
FINALIZATION

7

USES OF PARKS AND PUBLIC LANDS
Chapter 41:03:01

Commission Meeting Dates:	Proposal	June 2-3, 2016	Watertown
	Public Hearing	July 7-8, 2016	Pierre
	Finalization	July 7-8, 2016	Pierre

COMMISSION PROPOSAL

Recommended Changes:

41:03:01:01.02. Time restrictions for use of state park system. Only persons utilizing a state park, state recreation area, state nature area, or state lakeside use area for lawful fishing, hunting, trapping, snowmobiling, boating, or camping or other persons authorized by a department representative may enter, use, or occupy any state park, state recreation area, state nature area, or state lakeside use area from 11:00 p.m. to 6:00 a.m. from May 1 to September 30, inclusive, and 9:00 p.m. to 6:00 a.m. from October 1 to April 30, inclusive.

41:03:01:01.03. Time restrictions for use of public hunting areas and lake access areas. Only persons who are engaged in lawful fishing, hunting, trapping, or boating activities may enter, use or occupy any of the following areas from 11:00 p.m. to 6:00 a.m.:

- (1) Public shooting areas;
- (2) Game production areas;
- (3) Wildlife refuges; and
- (4) Lake and fishing access areas.

Lake and fishing access areas include public water access areas designated by the department.

DEPARTMENT RECOMMENDATION

Recommended change from proposal: None

SUPPORTIVE INFORMATION

It is the practice of Game, Fish and Parks to ask people to leave areas after established hours if they are not engaged in legal activities cited in rule. The rules suggested for change state that person(s) may not enter the listed areas after the established hours, but do not address people continuing to use or occupy those areas for activities not cited in rule. Rules later established for the use of the George S. Mickelson Trail (41:03:01:01:01) and Walk-in areas (41:03:01:01:04) utilize the language enter, use, or occupy with regards to time restrictions. This is the intent of all time restriction rules and fits the practice of the Game, Fish and Parks. This allows the Department to be on more solid legal grounds if its actions are challenged in court.

APPROVE

MODIFY

REJECT

NO ACTION

GAME, FISH AND PARKS COMMISSION ACTION
FINALIZATION

USES OF PARKS AND PUBLIC LANDS
Chapter 41:03:01

Commission Meeting Dates:	Proposal	June 2-3, 2016	Watertown
	Public Hearing	July 7-8, 2016	Pierre
	Finalization	July 7-8, 2016	Pierre

COMMISSION PROPOSAL

Recommended Changes: Repeal

~~41:03:01:30. Bicycle use restricted to roads, campgrounds, picnic areas, and designated trails.~~
Within Newton Hills State Park, and Lewis and Clark State Recreation Area, bicycle use is restricted to roads, campgrounds, picnic areas, and trails designated for bicycle use.

DEPARTMENT RECOMMENDATION

Recommended changes from proposal: None

SUPPORTIVE INFORMATION

The rule applies to only two state park units and is redundant with other rules in the chapter that can be used to enforce the bicycle restriction.

APPROVE MODIFY REJECT NO ACTION

GAME, FISH AND PARKS COMMISSION ACTION
FINALIZATION

9

CAMPING PERMITS AND RULES
Chapter 41:03:04

Commission Meeting Dates:	Proposal	June 2-3, 2016 Watertown
	Public Hearing	July 7-8, 2016 Pierre
	Finalization	July 7-8, 2016 Pierre

COMMISSION PROPOSAL

Recommended Changes:

41:03:04:04. Registration procedures -- ~~Display of registration card.~~ Upon receipt of the daily camping permit fee, the department shall provide each camper unit with a registration card. The card shall be placed on the pad post specifically provided for that purpose or conspicuously displayed otherwise if pad posts are not provided. The receipt section of the registration card shall show the amount paid and the date and shall be signed by a department representative.

A camper shall reserve a campsite prior to occupying the site in the park. A reservation may be placed either by using the on-line service at campsd.com or by calling 1-800-710-2267 or using the park reservation hot phone. Campers must be in possession of their confirmation information for that site. Individual campgrounds may have additional check-in procedures that the campers must follow. Self-registration may be used at any campground. At campgrounds using this **a self-registration** system, the department shall post camping fees and provide registration forms for campers to complete. Each camper shall insert the correct fee in the envelope provided with the form and insert the envelope in the security box provided. The camper shall display the **provided** registration **slip** card as described in this section **on a provided site post or in a conspicuous place.**

Any camper unit desiring to extend occupancy of a site beyond the nights for which the camper unit is paid, up to the limits set in § 41:03:01:15, shall reregister at the entrance booth **may extend the reservation** by 4:00 p.m. on that last day and pay the camping fees for the additional nights desired, **only if the site is available for the duration of the extended stay,** except at Custer State Park where a camper shall reregister **extend the reservation** by noon on the last day. **A Camper staying on a same-day reservation site located at Center Lake in Custer State Park and the Yankton section of Lewis and Clark Recreation Area shall extend the reservation prior to 12:00 AM (Midnight) on the last registered night's stay.**

Any camper registered for a designated first come, first served site at any state park and recreation area shall place a camping unit on the campsite immediately following registration.

Any camper with a same-day campsite reservation shall place a camping unit on the campsite by 10 p.m. of the first night of the reservation unless an alternate arrangement is made with park staff. If the camper fails to place a camping unit on the site, the camper shall be charged a cancellation fee and forfeit the remainder of the reservation.

DEPARTMENT RECOMMENDATION

Recommended changes from proposal: None

SUPPORTIVE INFORMATION

Since this rule was last revised, the Division of Parks and Recreation has contracted the services of a point of sale and campsite reservation on-line and call center company. The proposed changes reflect the modified campsite registration procedures.

APPROVE MODIFY REJECT NO ACTION

CAMPING PERMITS AND RULES
Chapter 41:03:04

Commission Meeting Dates:	Proposal	June 2-3, 2016	Watertown
	Public Hearing	July 7-8, 2016	Pierre
	Finalization	July 7-8, 2016	Pierre

COMMISSION PROPOSAL

Recommended Changes:

41:03:04:05.01. Campsite reservations -- Payment of camping fees -- Cancellation fees. Nonprofit youth groups with adult supervision may reserve a designated group camping area for up to ~~15~~ **14** consecutive days ~~days~~ **nights**.

A person may reserve an available campsite at any state park, recreation area, or lakeside use area for up to ~~15~~ **14** consecutive days ~~days~~ **nights**. Once the person has occupied the campsite the 14th night, the person shall remove his or her camping unit from the state park, recreational area, or lake side use area, by check-out time the next day, for at least one night, before reserving that site, or another site, at that location.

Camping fees set in subdivisions 41:03:04:03(1) to (3), inclusive, (7) to (13), inclusive, and (15) must be paid for the entire duration of a camper's anticipated stay at the time the reservation is made. A person who cancels a reservation for a campsite through the reservation center or who cancels a reservation for a campsite after arrival at the park shall pay one night's camping fee for each campsite reserved. A person who cancels a reservation for a camping cabin or rent-a-camper through the reservation center or after arrival at the park shall pay a \$25 cancellation fee. A person who cancels or shortens a reservation for a lodge more than 30 days ahead of the scheduled arrival date shall be charged a \$25 cancellation fee. A person who cancels or shortens a reservation for a lodge 30 days or fewer ahead of the scheduled arrival date shall be charged a \$25 cancellation fee for every night cancelled. The department shall refund all other fees for unused days of camping or unused lodge fees except nonrefundable reservation fees.

DEPARTMENT RECOMMENDATION

Recommended changes from proposal: None

SUPPORTIVE INFORMATION

It is confusing to park users and staff referring to the number of days a camper may occupy a campsite. The time allowed to occupy a site has not changed, but 14 nights is more clearly understood than 15 days. When a camper arrives and occupies a site, that is their first night's stay. When they have reached their 14th night's stay, they must leave prior to check-out time on the 15th day.

The additional language clarifies the intent of this portion of the rule. A camper cannot reserve and move to another campsite after the 14th night, but must leave the campground area for at least one night. This allows the opportunity for more users to take advantage of our camping resources.

APPROVE MODIFY REJECT NO ACTION

**GAME, FISH AND PARKS COMMISSION ACTION
FINALIZATION**

**Sage Grouse Hunting Season
Chapters 41:06:10 and 41:06:01**

Commission Meeting Dates:	Proposal	June 2-3, 2016	Watertown
	Public Hearing	July 7, 2016	Pierre
	Finalization	July 7-8, 2016	Pierre

COMMISSION PROPOSAL

- Season Dates:** September 17-18, 2016
- Open Area:** All public land and private land leased as Walk-in Areas in Harding County and west of U.S. Highway 85 in Butte County.
- Hunting Permit:** 40 resident hunting permits
- Limit:** 1 sage grouse per hunter per year

Requirements and Restrictions:

1. Shooting hours are sunrise to sunset.
2. The season is open to hunters that hold a valid small game license and are successful in drawing a hunting permit.
3. Successful hunters are encouraged to provide post-hunt interviews, present harvested sage grouse to GFP staff for examination, and respond to a hunter harvest survey.

Proposed changes from last year:

1. Create a two-day season beginning on the third Saturday of September; shooting hours run from sunrise to sunset.
2. Offer 40 resident hunting permits, allocated by a limited drawing process, through the initial draw. Permits remaining after the first draw will be available to resident and nonresident hunters on a first-come first-serve basis. Applicants will need to have a small game or combination license to be eligible for the drawing.

DEPARTMENT RECOMMENDATION

Recommended changes from proposal: None.

SUPPORTIVE INFORMATION

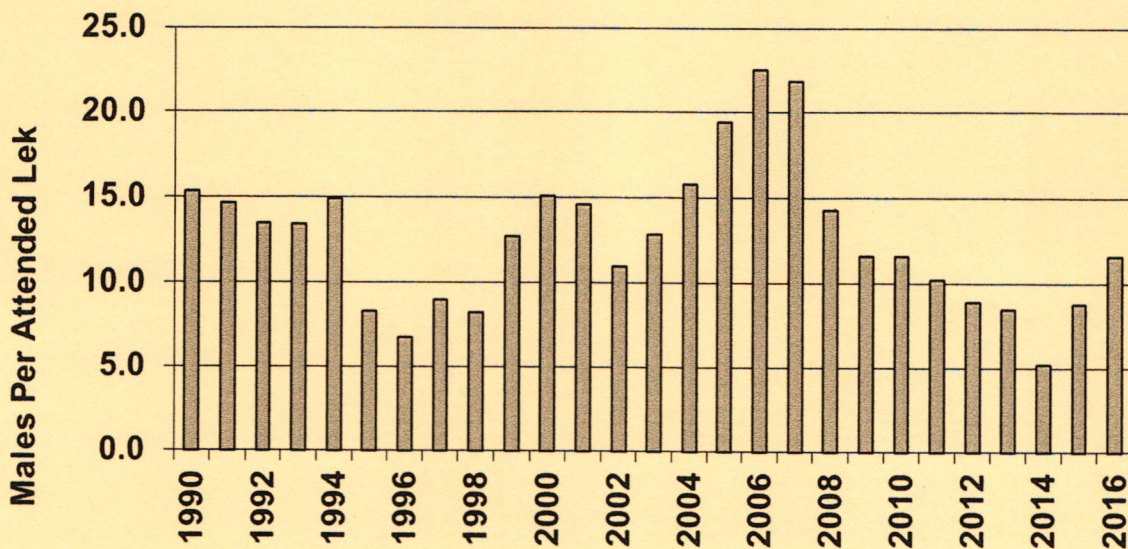
A restrictive hunting season is being recommended based on the season recommendation guidelines found within the "Sage-Grouse Management Plan for South Dakota, 2014-2018". Results from the 2016 spring lek surveys indicated 102 of males counted on priority leks and 278 males counted on all leks.

<u>Population Inices</u>	<u>Hunting Season Recommendation</u>
< 150 males counted on priority leks AND < 250 males counted on all leks	No Hunting Season
≥ 150 males counted on priority leks OR ≥ 250 males counted on all leks	2-day season, public land only in Harding County and Butte County west of US HWY 85, limit 1 sage-grouse per hunter per season
Sage-grouse listed as threatened or endangered under the Endangered Species Act	No Hunting Season

APPROVE _____	MODIFY _____	REJECT _____	NO ACTION _____
----------------------	---------------------	---------------------	------------------------

Year	Hunters	Sage Grouse Harvested
2004	53	25
2005	40	26
2006	46	15
2007	25	10
2008	24	17
2009	20	7
2010	26	12
2011	27	11
2012	35	9
2013	SEASON CLOSED	
2014	SEASON CLOSED	
2015	SEASON CLOSED	

Sage Grouse Lek Survey Results, 1990-2016.



APPROVE _____ MODIFY _____ REJECT _____ NO ACTION _____

**GAME, FISH, AND PARKS COMMISSION ACTION
FINALIZATION**

**Fall Wild Turkey Hunting Season
Chapter 41:06:14**

Commission Meeting Dates:	Proposal	June 2-3, 2016	Watertown
	Public Hearing	July 7, 2016	Pierre
	Finalization	July 7-8, 2016	Pierre

COMMISSION PROPOSAL

Season Dates: November 1, 2016 – January 31, 2017

Licenses:

Black Hills:	400 resident and 32 nonresident one-tag "any turkey" licenses
Prairie Units:	Residents: 1,230 single tag "any turkey" licenses Nonresidents: 28 single tag "any turkey" licenses Residents: 50 two-tag "any turkey" licenses

Requirements and Restrictions:

- One-half of the fall turkey licenses are available for landowner preference applicants.
- A person may not use any firearm on the south unit and the signed portion of the north unit of the Bureau of Land Management Fort Meade Recreation Area.
- No person may shoot a turkey that is in a tree or roost.

Proposed changes from last year:

- For limited draw units, offer 105 less resident one-tag licenses for Prairie Units compared to 2015.
- Dissolve the West River Prairie Unit and align fall units with spring unit boundaries where licenses will be allocated. For 2016, this will include Unit 30A (Gregory County); Unit 50A (Mellette County), and Unit 53A (Perkins County and that portion of Meade County north of US Hwy. 212).
- Modify Unit 08A (Davison and Hanson counties) to include that portion adjacent to the city of Mitchell (see attached map).
- Change the name of Unit NE1 (Northeast SD) to Unit 48A (Marshall and Roberts counties) and retain the same geographic area open for fall season.
- Remove the language in administrative rule depicting the license type and number of licenses from each hunting unit.
- Repeal rule language which limits a person to two fall turkey licenses.

DEPARTMENT RECOMMENDATION

Recommended changes from proposal: None.

SUPPORTIVE INFORMATION

Year	Prairie				Black Hills			
	Licenses Sold	Toms Harvested	Hens Harvested	Success	Licenses Sold	Toms Harvested	Hens Harvested	Success
2011	5,649	2,497	1,838	41%	3,098	537	513	34%
2012	5,075	2,109	1,225	37%	2,165	483	458	46%
2013	5,066	1,180	721	22%	1,627	185	188	23%
2014	1,910	422	224	33%	810	100	114	27%
2015	1,936	422	227	33%	433	66	62	29%

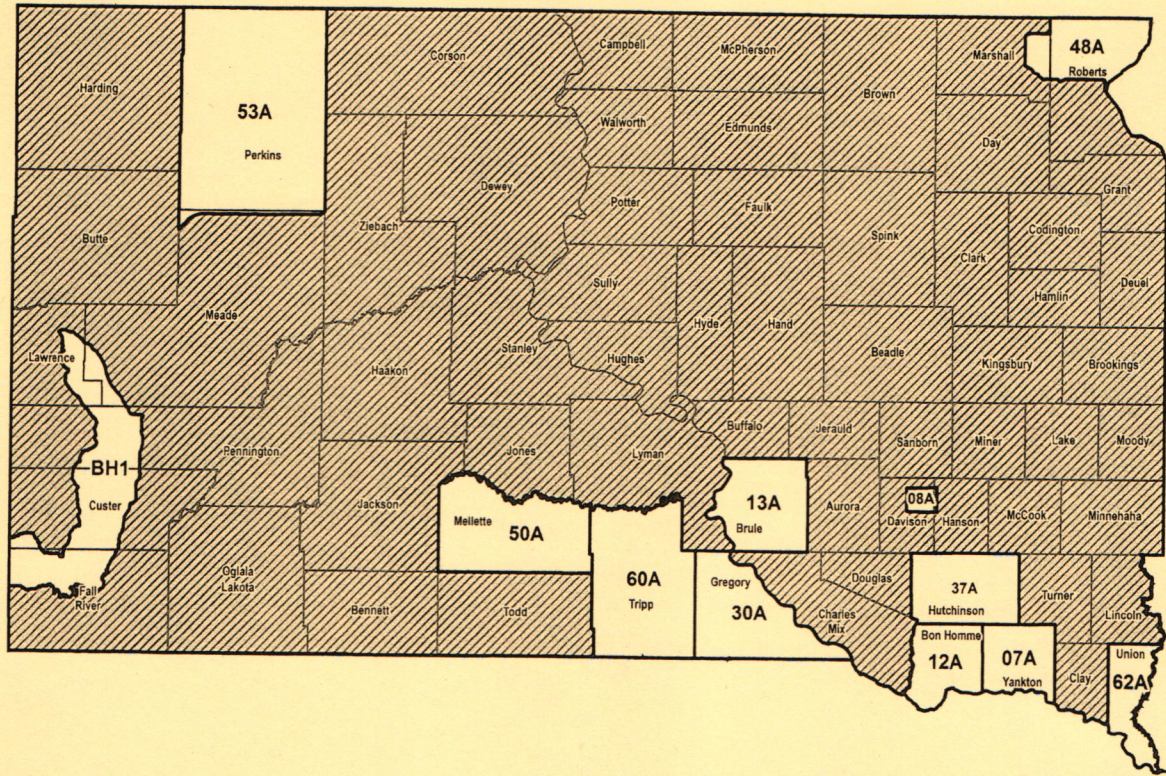
APPROVE _____ **MODIFY** _____ **REJECT** _____ **NO ACTION** _____

UNIT 08A (Davison & Hanson Counties)
Recommended Unit Boundary Adjustment



APPROVE MODIFY REJECT NO ACTION

FALL TURKEY UNITS



2016 Fall Turkey Licenses
 (All tags are for "any turkey")

Unit	1-Tag	2-Tag	Unit	1-Tag	2-Tag
07A	100		48A	100	
08A		50	50A	50	
12A	150		53A	100	
13A	50		60A	50	
30A	150		62A	50	
37A	30		BH1	400	

Unit #	Unit Name	Resident		Nonresident		License Totals							
		AnyT 31	2 AnyT 37	AnyT 31	2 AnyT 37	RES 1-tag	RES 2-tag	RES Lic	RES Tags	NR 1-tag	NR 2-tag	NR Lic	NR Tags
01A	Minnehaha	CLOSED											
02A	East Pennington	CLOSED											
06A	Brookings	CLOSED											
07A	Yankton	100	0	0	0	100	0	100	100	0	0	0	0
08A	Davison/Hanson	0	50	0	0	0	50	50	100	0	0	0	0
11A	Bennett	CLOSED											
12A	Bon Homme	150	0	0	0	150	0	150	150	0	0	0	0
13A	Brule	50	0	0	0	50	0	50	50	0	0	0	0
15A	Butte/Lawrence	CLOSED											
16A	Campbell/Walworth	CLOSED											
17A	Charles Mix/Douglas	CLOSED											
19A	Clay	CLOSED											
20A	Corson	CLOSED											
21A	Custer/Pennington	CLOSED											
22A	Day	CLOSED											
23A	Deuel	CLOSED											
24A	Dewey/Ziebach	CLOSED											
27A	Fall River	CLOSED											
29A	Grant	CLOSED											
30A	Gregory	150	0	12	0	150	0	150	150	12	0	12	12
31A	Haakon	CLOSED											
35A	Harding	CLOSED											
36A	Hughes	CLOSED											
37A	Hutchinson	30	0	0	0	30	0	30	30	0	0	0	0
39A	Jackson	CLOSED											
40A	Jerauld	CLOSED											
41A	Jones	CLOSED											
45A	Lyman	CLOSED											
44A	Lincoln	CLOSED											
48A	Marshall/Roberts	100	0	0	0	100	0	100	100	0	0	0	0
49A	Meade	CLOSED											
50A	Mellette	50	0	4	0	50	0	50	50	4	0	4	4
52A	Moody	CLOSED											
53A	Perkins	100	0	8	0	100	0	100	100	8	0	8	8
56A	Sanborn	CLOSED											
58A	Stanley	CLOSED											
60A	Tripp	50	0	4	0	50	0	50	50	4	0	4	4
61A	Turner	CLOSED											
62A	Union	50	0	0	0	50	0	50	50	0	0	0	0
65A	Oglala Lakota	CLOSED											
67A	Todd	CLOSED											
NE1	Northeast	DISSOLVED											
BH1	Black Hills	400	0	32	0	400	0	400	400	32	0	32	32
WR1	West River	DISSOLVED											
	TOTAL	1,230	50	60	0	1,230	50	1,280	1,330	60	0	60	60
Unit #	Unit Name	AnyT 31	2 AnyT 37	AnyT 31	2 AnyT 37	RES 1-tag	RES 2-tag	RES Lic	RES Tags	NR 1-tag	NR 2-tag	NR Lic	NR Tags
						RES & NR:	1,290	50	1,340	1,390			

FALL TURKEY
2015--2016 Comparison

Unit #	Unit Name	2015 Resident Licenses	2016 Resident Licenses	# Change	% Change	2015 Resident Tags	2016 Resident Tags	# Change	% Change
01A	Minnehaha	0	0	0	0%	0	0	0	0%
02A	East Pennington	0	0	0	0%	0	0	0	0%
06A	Brookings	0	0	0	0%	0	0	0	0%
07A	Yankton	100	100	0	0%	100	100	0	0%
08A	Davison/Hanson	50	50	0	0%	100	100	0	0%
11A	Bennett	0	0	0	0%	0	0	0	0%
12A	Bon Homme	200	150	-50	-25%	200	150	-50	-25%
13A	Brule	75	50	-25	-33%	75	50	-25	-33%
15A	Butte/Lawrence	Unlimited	0	NA	NA	Unlimited	0	NA	NA
16A	Campbell/Walworth	0	0	0	0%	0	0	0	0%
17A	Charles Mix/Douglas	200	0	-200	-100%	200	0	-200	-100%
19A	Clay	50	0	-50	-100%	50	0	-50	0%
20A	Corson	0	0	0	0%	0	0	0	0%
21A	Custer/Pennington	0	0	0	0%	0	0	0	0%
22A	Day	0	0	0	0%	0	0	0	0%
23A	Deuel	0	0	0	0%	0	0	0	0%
24A	Dewey/Ziebach	0	0	0	0%	0	0	0	0%
27A	Fall River	0	0	0	0%	0	0	0	0%
29A	Grant	0	0	0	0%	0	0	0	0%
30A	Gregory	Unlimited	150	NA	NA	Unlimited	150	NA	NA
31A	Haakon	0	0	0	0%	0	0	0	0%
35A	Harding	0	0	0	0%	0	0	0	0%
36A	Hughes	30	0	-30	-100%	30	0	-30	-100%
37A	Hutchinson	30	30	0	0%	30	30	0	0%
39A	Jackson	0	0	0	0%	0	0	0	0%
40A	Jerauld	0	0	0	0%	0	0	0	0%
41A	Jones	Unlimited	0	NA	NA	Unlimited	0	NA	NA
45A	Lyman	Unlimited	0	NA	NA	Unlimited	0	NA	NA
44A	Lincoln	0	0	0	0%	0	0	0	0%
48A	Marshall/Roberts	100	100	0	0%	100	100	0	0%
49A	Meade	0	0	0	0%		0	0	0%
50A	Mellette	Unlimited	50	NA	NA	Unlimited	50	NA	NA
52A	Moody	0	0	0	0%	0	0	0	0%
53A	Perkins	Unlimited	100	NA	NA	Unlimited	100	NA	NA
56A	Sanborn	0	0	0	0%	0	0	0	0%
58A	Stanley	Unlimited	0	NA	NA	Unlimited	0	NA	NA
60A	Tripp	Unlimited	50	NA	NA	Unlimited	50	NA	NA
61A	Turner	0	0	0	0%	0	0	0	0%
62A	Union	50	50	0	0%	50	50	0	0%
65A	Oglala Lakota	0	0	0	0%	0	0	0	0%
67A	Todd	Unlimited	0	NA	NA	Unlimited	0	NA	NA
NE1	Northeast	100	Dissolved	NA	NA	100	Dissolved	NA	NA
BH1	Black Hills	400	400	0	0%	400	400	0	0%
WR1	West River	Unlimited	Dissolved	NA	NA	Unlimited	Dissolved	NA	NA
	TOTAL	1,385	1,280	105	-8%	1,435	1,330	105	-7%

Note: An additional 8% of the number of licenses will be available to nonresidents for the Black Hills and West River prairie units.

Fall Turkey Hunting Seasons – Hunting Unit License Allocations

Commission Meeting Dates: **Proposal** June 2-3, 2016 **Watertown**
Public Hearing July 7, 2016 **Pierre**
Finalization July 7-8, 2016 **Pierre**

LICENSE ALLOCATION BY UNITS

Fall Turkey Hunting Season

2015 – 2016 Tag Comparison

Unit #	Unit Name	Resident Tags	
		Any Turkey	
		2015	2016
01A	Minnehaha	0	0
02A	East Pennington	0	0
06A	Brookings	0	0
07A	Yankton	100	100
08A	Davison/Hanson	100	100
11A	Bennett	0	0
12A	Bon Homme	200	150
13A	Brule	75	50
15A	Butte/Lawrence	Unlimited	0
16A	Campbell/Walworth	0	0
17A	Charles Mix/Douglas	200	0
19A	Clay	50	0
20A	Corson	0	0
21A	Custer/Pennington	0	0
22A	Day	0	0
23A	Deuel	0	0
24A	Dewey/Ziebach	0	0
27A	Fall River	0	0
29A	Grant	0	0
30A	Gregory	Unlimited	150
31A	Haakon	0	0
35A	Harding	0	0
36A	Hughes	30	0
37A	Hutchinson	30	30
39A	Jackson	0	0
40A	Jerauld	0	0
41A	Jones	Unlimited	0
45A	Lyman	Unlimited	0
44A	Lincoln	0	0
48A	Marshall/Roberts	100	100
49A	Meade	0	0
50A	Mellette	Unlimited	50
52A	Moody	0	0
53A	Perkins	Unlimited	100
56A	Sanborn	0	0
58A	Stanley	Unlimited	0
60A	Tripp	Unlimited	50
61A	Turner	0	0
62A	Union	50	50
65A	Oglala Lakota	0	0
67A	Todd	Unlimited	0
NE1	Northeast	100	Dissolved
BH1	Black Hills	400	400
WR1	West River	Unlimited	Dissolved
	TOTAL	1,435	1,330

APPROVE _____ **MODIFY** _____ **REJECT** _____ **NO ACTION** _____

2016 License Allocations

Unit #	Unit Name	Resident Licenses	Resident Licenses
		Single Tag Any Turkey	Double Tag Any Turkey
01A	Minnehaha	0	0
02A	East Pennington	0	0
06A	Brookings	0	0
07A	Yankton	100	0
08A	Davison/Hanson	0	50
11A	Bennett	0	0
12A	Bon Homme	150	0
13A	Brule	50	0
15A	Butte/Lawrence	0	0
16A	Campbell/Walworth	0	0
17A	Charles Mix/Douglas	0	0
19A	Clay	0	0
20A	Corson	0	0
21A	Custer/Pennington	0	0
22A	Day	0	0
23A	Deuel	0	0
24A	Dewey/Ziebach	0	0
27A	Fall River	0	0
29A	Grant	0	0
30A	Gregory	150	0
31A	Haakon	0	0
35A	Harding	0	0
36A	Hughes	0	0
37A	Hutchinson	30	0
39A	Jackson	0	0
40A	Jerauld	0	0
41A	Jones	0	0
45A	Lyman	0	0
44A	Lincoln	0	0
48A	Marshall/Roberts	100	0
49A	Meade	0	0
50A	Mellette	50	0
52A	Moody	0	0
53A	Perkins	100	0
56A	Sanborn	0	0
58A	Stanley	0	0
60A	Tripp	50	0
61A	Turner	0	0
62A	Union	50	0
65A	Oglala Lakota	0	0
67A	Todd	0	0
NE1	Northeast	Dissolved	Dissolved
BH1	Black Hills	400	0
WR1	West River	Dissolved	Dissolved
	TOTAL	1,230	50

APPROVE _____ MODIFY _____ REJECT _____ NO ACTION _____

GAME, FISH AND PARKS COMMISSION ACTION
FINALIZATION

Antelope Hunting Season
Chapter 41:06:23

Commission Meeting Dates:	Proposal	June 2-3, 2016	Watertown
	Public Hearing	July 7, 2016	Pierre
	Finalization	July 7-8, 2016	Pierre

COMMISSION PROPSAL

Requirements and Restrictions:

1. One-half of the licenses allocated in each unit are available for landowner/operator preference.
2. Landowners not possessing a license that allows the harvest of a buck may purchase an "any antelope" or a two-tag "any antelope" + "doe/fawn antelope" license that is valid on their property only.

Proposed changes from last year:

1. Add language in administrative rule which clarifies that if no licenses are allocated for a specific hunting unit, that unit is dissolved for the purposes of designating areas open to hunting as it pertains to the archery antelope season and the provisions of codified law which describes reduced fee licenses for landowner on own land licenses.
2. Remove the language in administrative rule depicting the license type and number of licenses from each hunting unit and substitute with the cumulative number of single and multiple tag licenses.

DEPARTMENT RECOMMENDATION

Recommended changes from proposal: None.

SUPPORTIVE INFORMATION

In recent years, a few antelope hunting units were issued no licenses due to antelope population levels. Those actions taken by the Commission per the recommendations of the Department were to eliminate harvest to allow antelope numbers to increase in those hunting units. In a few instances in these units, landowner on own land licenses were issued based on the language describing these licenses in codified law. Uncertainty exists and clarification is needed.

The Department is recommending the Commission add language into administrative rule clarifying that when a hunting unit is allocated zero licenses that the intent is to close that area to all hunting even though the unit may still remain listed and described within administrative rule. This will address the instances of question in previous years whether landowner on own land licenses should be issued in these hunting units where no licenses are allocated while also eliminating the necessity to go through the administrative rule process of removing the unit language in rule.

APPROVE _____ MODIFY _____ REJECT _____ NO ACTION _____

Antelope Hunting Season – Hunting Unit License Allocations

Commission Meeting Dates:	Proposal	June 2-3, 2016	Watertown
	Public Hearing	July 7, 2016	Pierre
	Finalization	July 7-8, 2016	Pierre

LICENSE ALLOCATION BY UNITS

Antelope Hunting Season

2015 – 2016 Tag Comparison

Unit #	Unit Name	Resident Tags	
		Any Antelope	
		2015	2016
02A	Pennington East	150	150
11A	Bennett/Oglala Lakota	50	50
15A	Butte NW	200	200
15B	Butte/Lawrence	250	250
20A	Corson	40	40
21A	Custer/Pennington Central	125	125
24A	Dewey	30	30
27A	Fall River/Custer Southwest	500	500
31A	Haakon	100	100
35A	Harding West	200	200
35B	Harding East	150	150
36A	Hughes/Hyde	40	40
39A	Jackson	50	50
41A	Jones	20	20
45A	Lyman	0	0
45B	Ft. Pierre National Grasslands	0	0
49A	Meade North	400	400
49B	Meade South	200	200
50A	Mellette	20	20
53A	Perkins North	100	100
53B	Perkins South	150	150
58A	Stanley	50	50
59A	Sully	20	20
60A	Tripp	0	0
63A	Walworth/Potter	0	0
64A	Ziebach	100	100
TOTAL		2,945	2,945

APPROVE _____ MODIFY _____ REJECT _____ NO ACTION _____

2016 License Allocations

Unit #	Unit Name	Resident Licenses
		Any Antelope
02A	Pennington East	150
11A	Bennett/Oglala Lakota	50
15A	Butte NW	200
15B	Butte/Lawrence	250
20A	Corson	40
21A	Custer/Pennington Central	125
24A	Dewey	30
27A	Fall River/Custer Southwest	500
31A	Haakon	100
35A	Harding West	200
35B	Harding East	150
36A	Hughes/Hyde	40
39A	Jackson	50
41A	Jones	20
45A	Lyman	0
45B	Ft. Pierre National Grasslands	0
49A	Meade North	400
49B	Meade South	200
50A	Mellette	20
53A	Perkins North	100
53B	Perkins South	150
58A	Stanley	50
59A	Sully	20
60A	Tripp	0
63A	Walworth/Potter	0
64A	Ziebach	100
TOTAL		2,945

APPROVE _____ MODIFY _____ REJECT _____ NO ACTION _____

PROCESSING OF GAME/PRIVATE SHOOTING PRESERVES
CHAPTER 41:06:03 & 41:09:01

Commission Meeting Dates:	Proposal	June 2-3, 2016	Watertown
	Public Hearing	July 7, 2016	Pierre
	Finalization	July 7, 2016	Pierre

COMMISSION PROPOSAL

Amend 41:06:03:11 to exempt licensed private shooting preserves from certain records requirements for wildlife processing facilities.

Amend 41:09:01:04 to increase the number of birds taken on a licensed private shooting preserve that may be packaged without identifying plumage attached.

Recommended changes:

41:06:03:11. Records required for wildlife processing facilities. No wildlife processing facility may:

(1) Receive or have in custody any wild animal unless accurate records are maintained that can identify each wild animal received by, or in the custody of, the facility by the name of the person from whom the wild animal was obtained and show the number of each species; the date each wild animal was received; the name and address of the owner of each wild animal; the date each wild animal was disposed of; and the name of the person or business to whom each wild animal was delivered; or

(2) Destroy any records required to be maintained under this section for a period of one year following receipt of each wild animal; or

(3) Allow any wild animal, or parts thereof, to leave the facility without a receipt bearing the name of the facility, number and species of wild animal, and the name of the owner of each wild animal.

However, the provisions of this section do not apply to any permitted bird harvested on a licensed shooting preserve.

41:09:01:04. Tagging of bagged birds. Serially numbered tags, supplied by the department, must be securely attached around the leg or neck of all harvested bird species that are listed on the preserve permittee's permit. All pen-reared and wild birds harvested on a preserve shall be tagged by the shooting preserve permittee, or the permittee's employees or agents, upon any of the following circumstances:

- (1) Prior to leaving the preserve acreage;
- (2) At the time the birds are cleaned or processed;
- (3) Prior to the birds being placed in a cooling or freezing facility; or
- (4) Prior to midnight of the day that the birds were harvested.

The head, leg, or sufficient plumage must remain attached to the bird to identify the sex and species of the bird. The kill tag must remain attached to the bird while the bird is possessed, placed in public storage, transported, or shipped by anyone. However, the head, leg, and sufficient plumage may be detached from the bird and discarded if the bird is processed at a wildlife processing facility, if the bird is immediately packaged by a transparent vacuum-sealed or shrink-wrap packaging process, and if the kill tag is encased in the same package and clearly legible. The package shall contain only those individual bird parts associated with the original kill tag. No more than two birds may be enclosed in the same package. Except as provided in this section, the provisions of chapter 41:06:03 apply to the possession, processing, and transportation of game birds harvested on a preserve.

DEPARTMENT RECOMMENDATION

Recommended changes from proposal: NONE

SUPPORTIVE INFORMATION

Licensed private shooting preserves that fit under the definition of a "wildlife processing facility" are currently required to maintain a separate set of processing records in addition to those records required for preserve activities (release, harvest, etc.). The proposed changes would exempt preserves from having to maintain a second set of records for birds that are processed at their respective cleaning facility. However, those preserves that hunt off-preserve would still be required to maintain records for the processing of those particular game birds.

The Department also proposes to increase the number of preserve birds that may be included in vacuum-sealed or shrink-wrapped packaging from one to two. This change would align requirements for transporting frozen non-preserve birds and those preserve birds that are breasted (i.e. no plumage attached) that have the kill tag enclosed in the required packaging.

41:06:03:10. Wildlife processing facility defined. A wildlife processing facility is any person or entity that has a South Dakota sales tax license to operate a business that receives, possesses, or has in custody any wild animal, as defined in § 41-1-1, belonging to another person for purposes of picking, skinning, cleaning, freezing, processing, or storage.

41:06:03:11. Records required for wildlife processing facilities. No wildlife processing facility may:

(1) Receive or have in custody any wild animal unless accurate records are maintained that can identify each wild animal received by, or in the custody of, the facility by the name of the person from whom the wild animal was obtained and show the number of each species; the date each wild animal was received; the name and address of the owner of each wild animal; the date each wild animal was disposed of; and the name of the person or business to whom each wild animal was delivered; or

(2) Destroy any records required to be maintained under this section for a period of one year following receipt of each wild animal; or

(3) Allow any wild animal, or parts thereof, to leave the facility without a receipt bearing the name of the facility, number and species of wild animal, and the name of the owner of each wild animal.

APPROVE

MODIFY

REJECT

NO ACTION

**PHEASANT HUNTING SEASON FOR DISABLED VETERANS
CHAPTER 41:06:54**

Commission Meeting Dates:	Proposal	June 2-3, 2016	Watertown
	Public Hearing	July 7, 2016	Pierre
	Finalization	July 7, 2016	Pierre

COMMISSION PROPOSAL

Amend 41:06:54:01 and 41:06:54:02 and repeal 41:06:54:04 to align administrative rule with legislation enacted in 2016 that pertains to the pheasant hunting season for disabled veterans.

Recommended changes:

41:06:54:01. Special pheasant hunting season authorized -- Valid on private land only. A special pheasant hunting season for qualifying disabled veterans may be established anytime during the ~~month~~ months of October and November upon application by a sponsoring non-profit organization. A special pheasant season for disabled veterans is valid only on private lands.

41:06:54:02. Season length -- Shooting hours -- Bag limits -- License requirements. ~~The season length for a special pheasant season for disabled veterans is one day.~~ The shooting hours for a special pheasant season for disabled veterans are sunrise to sunset except that after the start of the regular state pheasant season established pursuant to chapter 41:06:08, shooting hours are the same as those established for the regular state pheasant season. The bag limit is three cock pheasants. No hunting license or fee is required of qualifying disabled veterans.

41:06:54:04. Season eligibility. ~~A person is eligible to hunt in a special pheasant season for disabled veterans if the person is a veteran who is confined to a wheelchair.~~ Repealed.

DEPARTMENT RECOMMENDATION

Recommended changes from proposal: NONE

SUPPORTIVE INFORMATION

SENATE BILL 71 – 2016 LEGISLATIVE SESSION.

Section 1. 41-6-10.2. Any resident who meets the requirements of this section may apply to the licensing office of the Department of Game, Fish and Parks in Pierre and receive a resident small game license and a resident fishing license upon payment of a reduced fee to be established by the Game, Fish and Parks Commission in rules promulgated pursuant to chapter 1-26. A resident is eligible for the reduced fee if the resident:

- (1) Receives a veterans allotment for a total forty percent or more disability which is deemed a service-connected injury or has received the United States Veterans' Administration K Award;
- (2) Has served on active duty in the armed forces of the United States or has served as a member of the armed forces reserve or national guard, and the resident is totally forty percent or more disabled for the purposes of receiving social security benefits;
- (3) Was held as a prisoner of war; or
- (4) Has a total disability as defined by rules promulgated by the Game, Fish and Parks Commission.

The resident small game license and the resident fishing license are valid for a period of four calendar years if the licensee remains a resident of the state. A veteran may provide proof at the time of application of receipt of such an allotment, social security disability benefits, or award. Any other applicant shall provide proof of ~~total~~ any disability on a form provided by the Department of Game, Fish and Parks.

Section 2. That § 41-11-5.5 be amended to read:

41-11-5.5. Any nonprofit organization may establish a special ~~one-day~~ one-or-two-day pheasant hunt in which disabled veterans of the United States Armed Forces may participate. The special ~~one-day~~ one-or-two-day pheasant hunt may be held before or during the regular pheasant season. No fee may be charged to participants in any such special ~~one-day~~ one-or-two-day pheasant hunt, by either the state or the sponsoring organization. The Game, Fish and Parks Commission shall promulgate rules, pursuant to chapter 1-26, to administer the special ~~one-day~~ one-or-two-day pheasant hunts authorized in this section.

For the purposes of this section a disabled veteran of the United States Armed Forces is a resident or nonresident who meets one of the criteria established in subdivisions 41-6-10.2(1) or (2).

APPROVE MODIFY REJECT NO ACTION

17a

DIVISION OF PARKS AND RECREATION
January to June 2016 Revenue Comparison by District

LOCATION	2015	2016	%
Fort Sisseton Roy Lake Sica Hollow			
DISTRICT 1	\$ 201,216	\$ 214,779	7%
Richmond Lake Mina Lake Lake Louise Fisher Grove Amsden			
DISTRICT 2	\$ 171,367	\$ 176,272	3%
Sandy Shore Hartford Beach Lake Cochrane Pelican Lake Pickrel Lake			
DISTRICT 3	\$ 411,384	\$ 436,499	6%
Oakwood Lakes Lake Poinsett Lake Thompson			
DISTRICT 4	\$ 543,206	\$ 566,962	4%
Lake Herman Walkers Point			
DISTRICT 5	\$ 212,879	\$ 217,924	2%
Snake Creek Platte Creek Burke Lake Buryanek			
DISTRICT 6	\$ 320,836	\$ 317,222	-1%
Palisades Lake Vermillion Big Sioux			
DISTRICT 7	\$ 484,435	\$ 517,430	7%
Newton Hills Lake Alvin Union Grove Adams			
DISTRICT 8	\$ 326,231	\$ 326,389	0%

LOCATION	2015	2016	%
Lewis & Clark Springfield Chief White Crane Pierson Ranch Tabor Sand Creek			
DISTRICT 9	\$ 1,298,309	\$ 1,360,321	5%
White Swan South Scalp Randall Creek South Shore North Point Pease Creek Whetstone North Wheeler			
DISTRICT 10	\$ 476,398	\$ 481,286	1%
Farm Island West Bend			
DISTRICT 11	\$ 346,121	\$ 374,666	8%
Okobojo Spring Creek Oahe Downstream Cow Creek			
DISTRICT 12	\$ 350,321	\$ 382,599	9%
WalthBay East Whitlock West Whitlock Lake Hiddenwood Swan Creek Indian Creek Revheim Bay West Pollock			
DISTRICT 13	\$ 279,297	\$ 287,552	3%
Mickelson Trail Bear Butte			
DISTRICT 14	\$ 62,588	\$ 80,747	29%
Shadehill Llewellyn Johns Rocky Point			
DISTRICT 15	\$ 289,470	\$ 327,922	13%
Custer			
DISTRICT 16	\$ 2,303,829	\$ 2,848,503	24%
Angostura Sheps Canyon			
DISTRICT 17	\$ 424,677	\$ 478,672	13%
PIERRE OFFICE	\$ 161,592	\$ 172,938	7%
TOTAL:	\$ 8,664,156	\$ 9,568,684	10%

176

DIVISION OF PARKS AND RECREATION
January to June 2016 Revenue Comparison by Item

	2015		2016		%
	Number	Dollar	Number	Dollar	
Annual	29,309	\$ 879,270	32,905	\$ 987,150	12%
Second Vehicle	7,194	\$ 107,903	8,232	\$ 123,476	14%
Combo	17,946	\$ 807,562	18,425	\$ 829,108	3%
Transferable	1,220	\$ 79,294	1,348	\$ 87,612	10%
Daily / Person	13,468	\$ 53,871	14,453	\$ 57,812	7%
Daily / Vehicle	25,677	\$ 154,062	29,656	\$ 177,936	15%
Unattended Vehicle Daily	651	\$ 6,513	692	\$ 6,916	6%
Motorcoach Permit	2,220	\$ 6,660	2,117	\$ 6,351	-5%
GSM Annual Trail Pass	1,222	\$ 18,330	1,755	\$ 26,325	44%
GSM Daily Trail Pass	5,093	\$ 15,279	5,491	\$ 21,964	44%
CSP Temp Daily / Vehicle	46,648	\$ 699,720	51,953	\$ 1,039,056	48%
Bike Band	3,851	\$ 38,513	4,658	\$ 46,578	21%
Rally Bike Band	0		0		#DIV/0!
One-Day Special Event	N/A	\$ 3,565	N/A	\$ 3,975	12%
PERMITS	154,499	\$ 2,870,542	171,683	\$ 3,414,259	19%
Camping Services Permits	-	\$ 5,704,469	-	\$ 6,071,362	6%
Gift Card	-	\$ 3,840	-	\$ 3,500	-9%
Picnic Reservations	-	\$ 13,089	-	\$ 14,742	13%
Firewood	14,443	\$ 72,216	12964	\$ 64,821	-10%
LODGING	14,443	\$ 5,793,614	12964	\$ 6,154,425	6%
TOTAL	168,942	\$ 8,664,156	184,648	\$ 9,568,684	10%

**DIVISION OF PARKS AND RECREATION
JANUARY TO JUNE 2016 CAMPING UNIT COMPARISON BY DISTRICT**

Park	2015 Units	2016 Units	%
Fort Sisseton	777	811	4%
Roy Lake	2,446	2,513	3%
Sica Hollow	36	48	33%
District 1	3,259	3,372	3%
Richmond Lake	595	563	-5%
Mina Lake	950	998	5%
Lake Louise	749	742	-1%
Fisher Grove	366	342	-7%
Amsden	108	112	4%
District 2	2,768	2,757	0%
Sandy Shore	373	415	11%
Hartford Beach	1,934	1,957	1%
Lake Cochrane	700	679	-3%
Pelican South	1,962	2,026	3%
Pickerel Lake	2,342	2,460	5%
District 3	7,311	7,537	3%
Oakwood Lakes	3,225	3,377	5%
Lake Poinsett	2,737	3,080	13%
Lake Thompson	2,681	2,725	2%
District 4	8,643	9,182	6%
Lake Herman	2,131	2,325	9%
Walkers Point	989	1,144	16%
Lake Carthage	213	275	29%
District 5	3,333	3,744	12%
Snake Creek	4,196	4,393	5%
Platte Creek	885	795	-10%
Burke Lake	16	24	50%
Buryanek	1,304	1,396	7%
District 6	6,401	6,608	3%
Palisades	1,747	1,795	3%
Lake Vermillion	3,298	3,392	3%
Big Sioux	1,918	2,340	22%
District 7	6,963	7,527	8%
Newton Hills	3,847	3,918	2%
Union Grove	615	511	-17%
District 8	4,462	4,429	-1%

Park	2015 Units	2016 Units	%
Lewis & Clark	14,709	14,754	0%
Tabor	42	44	5%
Sand Creek	77	41	-47%
Springfield	405	387	-4%
Chief White Crane	3,856	4,113	7%
Pierson Ranch	1,602	1,598	0%
District 9	20,691	20,937	1%
North Point	3,940	3,784	-4%
North Wheeler	337	414	23%
Pease Creek	636	614	-3%
Randall Creek	2,749	2,784	1%
South Shore	125	148	18%
Whetstone Bay	317	309	-3%
White Swan	123	106	-14%
South Scalp	21	24	14%
District 10	8,248	8,183	-1%
Farm Island	2,663	3,064	15%
West Bend	3,799	4,317	14%
District 11	6,462	7,381	14%
Oahe Downstream	5,420	5,934	9%
Cow Creek	1,121	1,182	5%
Okobojo Point	407	619	52%
District 12	6,948	7,735	11%
West Whitlock	2,252	2,261	0%
Lake Hiddenwood	86	178	107%
East Whitlock	20	58	190%
Swan Creek	318	399	25%
Indian Creek	3,018	3,315	10%
Walth Bay	8	21	163%
West Pollock	401	431	7%
District 13	6,103	6,663	9%
Bear Butte	218	291	33%
District 14	218	291	33%
Shadehill	1,952	2,401	23%
Llewellyn Johns	156	201	29%
Rocky Point	1,783	2,295	29%
District 15	3,891	4,897	26%
Custer	16,012	16,966	6%
District 16	16,012	16,966	6%
Angostura	5,966	6,615	11%
Sheps Canyon	512	637	24%
District 17	6,478	7,252	12%
TOTAL FEE AREA			
CAMPER UNITS	118,191	125,461	6%

**DIVISION OF PARKS AND RECREATION
JANUARY TO JUNE 2016 VISITATION COMPARISON**

Park	2015	2016	% Change
Fort Sisseton	31,939	25,421	-20%
Roy Lake	67,150	67,600	1%
Sica Hollow	4,813	7,066	47%
District 1	103,902	100,087	-4%
Richmond Lake	15,156	15,767	4%
Mina Lake	18,998	20,028	5%
Lake Louise	11,678	13,996	20%
Fisher Grove	8,866	8,746	-1%
District 2	54,698	58,537	7%
Sandy Shore	8,948	10,962	23%
Hartford Beach	48,604	31,720	-35%
Lake Cochrane	5,676	3,836	-32%
Pelican	9,394	11,410	21%
Pickrel Lake	11,782	14,410	22%
District 3	84,404	72,338	-14%
Oakwood Lakes	30,137	32,014	6%
Lake Poinsett	20,334	25,924	27%
Lake Thompson	21,593	19,530	-10%
District 4	72,064	77,468	7%
Lake Herman	41,193	43,505	6%
Walkers Point	15,430	15,423	0%
District 5	56,623	58,928	4%
Snake Creek	81,816	75,881	-7%
Platte Creek	56,557	64,369	14%
Burke Lake	8,281	9,514	15%
Buryanek	20,658	23,719	15%
District 6	167,312	173,483	4%
Palisades	34,604	40,631	17%
Lake Vermillion	44,112	46,583	6%
Big Sioux	21,669	25,121	16%
Beaver Creek	11,614	10,695	-8%
District 7	111,999	123,030	10%
Newton Hills	52,857	40,374	-24%
Good Earth	12,596	11,430	-9%
Lake Alvin	20,741	12,832	-38%
Union Grove	7,601	4,259	-44%
Adams	9,792	16,749	71%
Spirit Mound	8,088	5,435	-33%
District 8	111,675	91,079	-18%

Park	2015	2016	% Change
Lewis & Clark	298,330	280,234	-6%
Springfield	50,049	40,520	-19%
Chief White Crane	24,940	23,618	-5%
Pierson Ranch	28,669	27,400	-4%
District 9	401,988	371,772	-8%
North Point	51,452	50,227	-2%
North Wheeler	7,764	9,166	18%
Pease Creek	12,050	15,851	32%
Randall Creek	24,268	17,649	-27%
Ft. Randall Boat Club	7,562	8,240	9%
District 10	103,096	101,133	-2%
Farm Island	61,419	65,339	6%
West Bend	20,826	26,369	27%
LaFramboise Island	40,600	37,989	-6%
District 11	122,845	129,697	6%
Oahe Downstream	146,489	196,678	34%
Cow Creek	97,312	90,006	-8%
Okobojo Point	11,028	12,338	12%
Spring Creek	52,070	53,050	2%
District 12	306,899	352,072	15%
West Whitlock	43,516	37,315	-14%
Lake Hiddenwood	11,304	11,485	2%
Swan Creek	26,451	25,678	-3%
Indian Creek	42,520	35,441	-17%
Revheim Bay	21,624	23,659	9%
West Pollock	33,051	33,707	2%
District 13	178,466	167,285	-6%
Bear Butte	20,344	20,027	-2%
District 14	20,344	20,027	-2%
Shadehill	15,286	17,342	13%
Llewellyn Johns	2,279	2,485	9%
Little Moreau	6,084	6,367	5%
Rocky Point	36,916	42,416	15%
District 15	60,565	68,610	13%
Custer	676,254	774,487	15%
District 16	676,254	774,487	15%
Angostura	74,298	84,782	14%
Sheps Canyon	19,514	22,512	15%
District 17	93,812	107,294	14%
TOTALS:	2,726,946	2,847,327	4%



June 24, 2016

South Dakota Game, Fish & Parks Commission
Secretary Kelly Hepler
523 East Capitol Avenue
Pierre, South Dakota 57501

Dear Commission members and Secretary Hepler,

The Rocky Mountain Elk Foundation (RMEF) requests consideration by the Commission and Department to allow RMEF to participate in the South Dakota Special Elk Permit Raffle program for 2016-2017 as described in Chapter 41:06:27 of your rules. The RMEF appreciates the opportunity to continue this highly successful partnership. Revenues generated since this relationship was formed in 1990 continue to benefit elk and other wildlife in South Dakota.

Please accept the enclosed information as our official application under the terms and conditions listed in Rule 41:06:27:02:03. Enclosed are:

1. A letter from Tom Slowey, Eastern South Dakota Regional Director;
2. RMEF's Federal Tax Exempt ID Number;
3. A copy of our report to SDGFP which describes the results of the 2015-2016 South Dakota Special Elk Permit Raffle;
4. Drawing results of the 2015-2016 Raffle;
5. South Dakota RMEF project summary through December 2013

The RMEF volunteers of the State of South Dakota recognize the positive impact that funds raised through the sale of the Special Elk Permit raffle program have on Department goals, especially in these



challenging economic times. This program affords them another way to achieve their mission of protecting and enhancing habitat critical not only to the State's elk population, but to all the other species that share that environment with them.

I apologize that I and Volunteer State Chair, Jerry Hirrschoff are out of state for meetings. Hopefully our prior conversations with the commission and Tom Kirschenmann have provided adequate information. Thank you for your consideration.

Sincerely,

Tom Slowey
RMEF South Dakota Regional Director

enc.

cc: Larry Gehrke, Special Elk Permit Raffle Coordinator
Tom Kirschenmann, SD G,F,& P

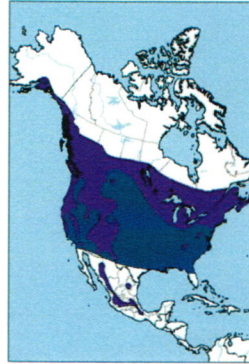
Winter Owl Banding in Central SD



2016 July Commission Meeting
Casey Heimerl



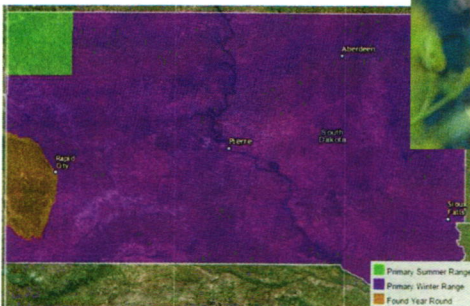
Northern Saw-whet Owl *Aegolius acadicus*



© Doug Backlund



Northern Saw-whet Owl *Aegolius acadicus*

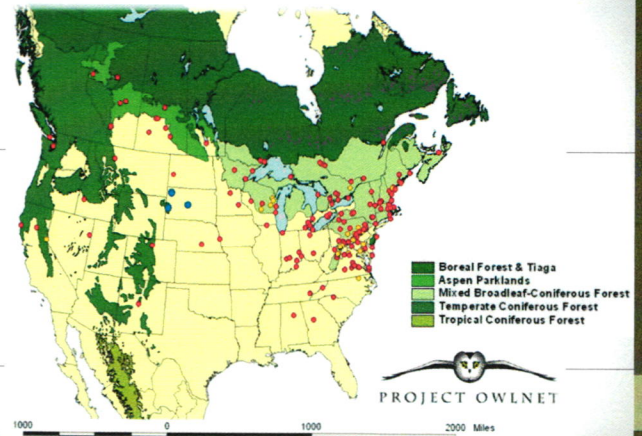


© SDGFP Wildlife Action Plan Website



© Doug Backlund

Northern Saw-whet Owl Banding Stations



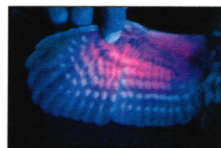
Northern Saw-whet Owls in Central SD

- Prior to 2002, few documented wintering NSWOW outside of the Black Hills
- First documented observation occurred in January 1995 on Farm Island.
- Doug Backlund began banding efforts at several sites throughout central SD from 2002 to 2005
 - Banded 24 individuals
- Returned to banding sites in winter of 2014-2016
 - Are NSWOW still wintering here and at what densities?
 - What habitats features are they selecting?



Methods

- December – February from 7:00pm to 10:00pm
- Mist nets with audio lure, checked every 20-30 min
- Wing Cord, Mass (sex determination)
- Fat score, Age



Results

- 2014/2015: 7 banding nights, 11 individuals banded
 - 8 females, 2 males, 1 unknown
 - 9 HY, 2 AHY
- 2015/2016: 8 banding nights, 16 individuals banded
 - 12 females, 0 males, 4 unknown
 - 14 HY, 2 AHY
- Hatch-year females most commonly captured
- NSWOW captured at every banding site



of Individuals Banded 2014-2016



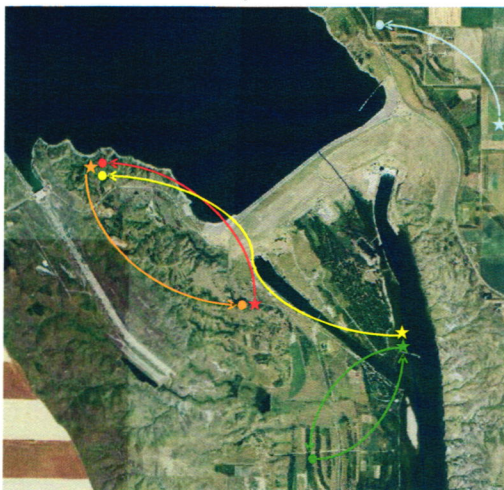
Recaptures

- Recapture dates suggest NSW0 are remaining in central SD to winter

- 2014/2015: 2 recaptures (HY females)
 - 0924-28205: banded Dec 10, recap Dec 16
 - 0924-28202: banded Dec 8, recap Jan 14 and Feb 2
- 2015/2016: 4 recaptures (HY females)
 - 0924-28222: banded Jan 5, recap Feb 1
 - 0924-28214: banded Dec 2, recap Feb 1
 - 0924-29225: banded Jan 26, recap Feb 11
 - 0924-28213: banded Dec 2, recap Feb 17



Recaptures



Future Plans & Goals

- Continue banding efforts
 - Add banding stations north and south of Oahe Dam
 - Across season recaptures
 - Recaptures from other banding stations
- Attach transmitters to track winter movements in central SD
 - How far are NSW0 traveling & what habitats are being used while active?
 - Where and what habitats are being used by NSW0 for day roosts?
 - How long do wintering NSW0 stay in central SD?





License Sales Totals

(as of June 28)

date updated: 28 June 2016

Resident	2016	2015
Combination	40,026	38,968
Junior Combination	5,688	5,553
Senior Combination	7,368	6,757
Small Game	1,620	1,635
Youth Small Game	786	821
1-Day Small Game	232	198
Migratory Bird Certificate	13,451	14,274
Predator/Varmint	1,314	1,101
Furbearer	2,256	2,400
Annual Fishing	52,175	52,269
Senior Fishing	11,147	10,876
1-Day Fishing	2,762	2,612
Gamefish Spearing/Archery	2,369	2,325

Nonresident	2016	2015
Small Game	3,032	3,042
Youth Small Game	253	211
Annual Shooting Preserve	76	95
5-day Shooting Preserve	574	551
1-day Shooting Preserve	301	226
Spring Light Goose	3,968	4,249
Youth Spring Light Goose	138	161
Migratory Bird Certificate	230	125
Predator/Varmint	3,244	3,165
Furbearer	3	4
Annual Fishing	23,005	21,878
Family Fishing	7,536	7,233
Youth Annual Fishing	1,178	1,068
3-Day Fishing	14,156	12,758
1-Day Fishing	11,909	9,445
Gamefish Spearing/Archery	568	494
TOTAL ON FILE =	211,365	204,494

2016 Second Draw Black Hills Elk					
UnitCode	PyP	NumberofApplicants	Number Successful	Pref Points Used	
H2C23	11	1	1	11	
H2C23	9	2	2	18	
H2C23	8	1	1	8	
H2C23	7	2	2	14	
H2C23	6	2	2	12	
H2C23	5	4	4	20	
H2C23	4	5	5	20	
H2C23	3	7	7	21	
H2C23	2	14	14	28	
H2C23	1	17	17	17	
H2C23	0	1255	3	0	
H2D23	10	1	1	10	
H2D23	8	1	1	8	
H2D23	7	1	1	7	
H2D23	6	1	1	6	
H2D23	4	2	2	8	
H2D23	3	2	2	6	
H2D23	2	3	3	6	
H2D23	1	4	4	4	
H2D23	0	334	28	0	
H2E23	11	1	1	11	
H2E23	10	2	2	20	
H2E23	8	1	1	8	
H2E23	7	1	1	7	
H2E23	5	4	4	20	
H2E23	4	5	5	20	
H2E23	3	2	2	6	
H2E23	2	4	4	8	
H2E23	1	7	7	7	
H2E23	0	662	20	0	
H2F23	13	3	3	39	
H2F23	10	1	1	10	
H2F23	8	1	1	8	
H2F23	6	3	3	18	
H2F23	5	2	2	10	
H2F23	4	3	3	12	
H2F23	3	6	6	18	
H2F23	2	4	4	8	
H2F23	1	14	14	14	
H2F23	0	1131	65	0	

H2G23	9	1	1	9
H2G23	3	3	3	9
H2G23	2	1	1	2
H2G23	0	429	93	0
H2H23	0	47	12	0
H2I23	2	1	1	2
H2I23	0	65	23	0
H2J23	3	1	1	3
H2J23	0	25	24	0
H3C23	3	2	2	6
H3C23	0	73	7	0
H3D23	4	2	2	8
H3D23	2	1	1	2
H3D23	0	43	10	0
H3E23	2	1	1	2
H3E23	1	5	5	5
H3E23	0	97	14	0
H3F23	5	1	1	5
H3F23	3	2	2	6
H3F23	0	123	41	0
H3G23	0	132	46	0
H7B23	9	1	1	9
H7B23	6	1	1	6
H7B23	2	1	1	2
H7B23	1	4	4	4
H7B23	0	111	0	0
H9B23	1	1	1	1
H9B23	0	17	1	0
Total Pref Points Used =				549

2016 Second Draw Archery Elk				
UnitCode	PyP	NumberofApplicants	Number Successful	Pref Points Used
H1A23	8	1	0	0
H1A23	5	1	0	0
H1A23	2	1	1	2
H1A23	1	5	0	0
H1A23	0	59	0	0
H2A23	10	1	1	10
H2A23	9	3	2	18
H2A23	7	1	1	7
H2A23	6	2	2	12
H2A23	5	3	2	10
H2A23	4	1	1	4
H2A23	3	2	1	3
H2A23	2	11	9	18
H2A23	1	8	5	5
H2A23	0	908	21	0
H3A23	5	1	1	5
H3A23	4	1	1	4
H3A23	1	2	1	1
H3A23	0	56	1	0
			Total Pref Points Used =	99