



AGENDA

Game, Fish and Parks Commission

April 7-8, 2016

McCrary Gardens

621 22nd Avenue, Brookings, SD

Strategic Planning 10:00 AM CT

Call to order 1:00 PM CT

Division of Administration

Action Items:

1. Approve Minutes of the March 2016 Meeting
<http://gfp.sd.gov/agency/commission/docs/2016/march-meeting-minutes.pdf>
2. Additional Commissioner Salary Days
3. License List Request

Information Items:

4. Pending Action Items from 2016 Legislative Session

2:00 PM Public Hearing

Finalizations

5. CSP Bison
6. Elk Hunting Seasons
7. Application for Elk Licenses
8. Waterfowl Hunting Seasons
9. Minimum Standard for Hunting with Air Guns
10. Allowance for Trail Cameras on Public Land

Open Forum

Petitions for Rule Change

11. Senior Antlerless Deer Licenses

Division of Parks and Recreation

Action Items:

12. Spearfish Canyon Foundation Land Donation

Division of Parks and Recreation (continued)

Information Items:

13. Status of Trevarton Murdock Lawsuit
14. SDSU Park Management Program
15. Capital Campout
16. Go 4th Program/Park Prescriptions
17. Park Revenue and Camping Reservation Report

Division of Wildlife

Action Items:

18. SD Pheasant Management Plan

Information Items:

19. Land Acquisition Guidance Document
20. Land Acquisition Projects
21. East River Fisheries Management Plan Implementation update
22. Regional Terrestrial Resource Supervisor positions
23. Results of Animal Damage Control Cooperator Survey
24. Winter Depredation Activities report
25. Habitat Workshop recap
26. Enemy Swim and Stony Point (Kampeska Lake) update
27. National Hunting and Shooting Sports Action Plan
28. 2016 License Sales Update

Adjourn

Next meeting information:

May 5-6, 2016
State Game Lodge
Custer State Park

Minutes of the Game, Fish, and Parks Commission
March 3-4, 2016

Chairman Peterson called the meeting to order at 1:00 p.m. CDT at the RedRossa in Pierre, South Dakota. Commissioners John Cooper, H. Paul Dennert, Barry Jensen, Gary Jensen, Russell Olson, W. Scott Phillips, and Jim Spies were present. Secretary Kelly Hepler was present along with approximately 25 public, staff, and media.

DIVISION OF ADMINISTRATION

Approval of Minutes

Chairperson Peterson called for any additions or corrections to the January 14-15, 2016, minutes or a motion for approval.

Motion by B. Jensen with second by Spice TO APPROVE THE MINUTES OF THE JANUARY 14-15, 2015, MEETING WITH MINOR CHANGES. Motion carried unanimously.

Additional Commissioner Salary Days

Commissioners Phillips and Dennert each requested one additional salary day and Commissioner Peterson requested two additional salary days.

Motion by Spies with second by G. Jensen TO APPROVE THE ADDITIONAL SALARY DAYS AS REQUESTED. Motion carried unanimously.

License List Requests

Chris Petersen, Administration Division Director presented a license list request for residents of Iowa and Nebraska who purchased hunting and fishing licenses in 2016 from Paul Nester with Midwest Hunting and Fishing Magazine to be used in the distribution of complimentary copies of the magazine.

Motion by Cooper with second by Phillips TO APPROVE THE LICENSE LIST REQUEST. Motion carried unanimously.

GFP-sponsored legislation for 2016 legislation session

Petersen provided the Commission with an update on the budget process noting our agencies budget was adopted by the joint appropriations committee. Secretary Hepler gave an overview of agency sponsors legislation which were continued red tape review bills.

Public Hearing

The Public Hearing began at 2:03 p.m. and concluded at 2:12 p.m. and the minutes follow these minutes.

FINALIZATIONS

Resolution for Allocations of Limited-draw Hunting and Paddlefish Licenses

Director Tony Leif provided information on rules process for the allocation of hunting licenses. Per statute 41-6-21 the Commission is required to establish license numbers by season. The Department recommendation is for the Commission to table this proposed new rule to set the number of license by resolution and instead establish a practice where the Commission will pass rules that establish license allocations for each big game hunting season and then take administrative action to establish licenses and access permits for each hunting unit. The Department will continue to publish these actions in the minutes, website and any other publications that are distributed. The process will essentially remain the same for the public.

Motioned by G. Jensen with second by Spies TO TABLE THE FINALIZATION OF THE RESOLUTION FOR ALLOCATIONS OF LIMITED-DRAW HUNTING AND PADDLEFISH LICENSES. Motion carried unanimously.

Repeal of Dry Creek Waterfowl Refuge in Sully County

Deputy Director Tom Kirschenmann presented the Department recommendation to remove the Dry Creek State Waterfowl Refuge. The Dry Creek State Waterfowl Refuge was implemented in 1999 as a contingency to the enrollment of the Mail Shack Creek/Zimmerman Walk-in/Lower Oahe Waterfowl Access Area. Additionally, when this refuge was implemented, the Sully Flats Waterfowl Refuge (just up river from the current Dry Creek State Waterfowl Refuge) was removed. The Zimmerman Walk-in/Lower Oahe Waterfowl Access Area land was removed from the access program in the fall of 2015 at the request of the landowner.

Motioned by Olson with second by B. Jensen TO APPROVE THE REMOVAL OF THE DRY CREEK STATE WATERFOWL REFUGE. Motion carried unanimously.

PROPOSALS

Custer State Park Bison Hunting Season

Gary Brundige, Division Staff Specialist presented the recommendation to keep the Custer State Park trophy bison bull harvest open for 47 days beginning the last Monday in November allowing for 8 trophy bull bison permits with 2 allocated to residents in the first draw. These licenses are used to remove over mature bison bulls. No action was required or taken.

Brundige also presented the recommended request to change the Custer State Park non-trophy bison harvest season opening date to the 2nd Monday in January. They also recommended reducing the number of cow licenses from ten to five and reducing the number of cow licenses allocated to residents in the first draw from five to three.

Motioned by G. Jensen with second by B. Jensen TO APPROVE THE PROPOSAL AS RECOMMENDED. Motion carried unanimously.

Elk Hunting Season: Black Hills, Custer State Park, Archery and Prairie

Assistant Director Tom Kirschenmann and Program Administrator Chad Switzer presented recommended changes on elk hunting seasons noting the duration of the seasons to be for 2016 and 2017. Kirschenmann presented the recommended change to the Black Hills hunting seasons as specified below.

1. Adjust the number of licenses available from 430 "any elk" and 500 "antlerless elk" licenses (total of 930 licenses) to 443 "any elk" and 1,255 "antlerless elk" licenses (total of 1,698 licenses).
2. Make adjustments to existing antlerless hunting units and create new antlerless hunting units.
3. Season dates for units H2B, H2E, H2H, H3B, and H3E would run from the Monday closest to October 15 through October 31.
4. Season dates for units H2C, H2F, H2I, H3C, and H3F would run from December 1 through the Friday closest to December 15.
5. Season dates for units H2D, H2G, H2J, H3D, and H3G would run from Saturday closest to December 15 through December 31.
6. Remove the language in administrative rule depicting the license type and number of licenses from each hunting unit.

Motioned by G. Jensen with second by Spies TO APPROVE THE PROPOSAL AS RECOMMENDED. Motion carried unanimously.

Archery Elk Hunting Season

Kirschenmann and Switzer presented the proposed changes to the archery elk hunting season to adjust the number of licenses available from 144 any elk and 56 antlerless elk licenses to 147 any elk and 140 antlerless elk licenses. They also recommended removal of the language in administrative rule depicting the license type and number of licenses from each hunting unit.

Motioned by Dennert with second by Phillips TO APPROVE THE PROPOSAL AS PRESENTED. Motion carried unanimously.

Prairie Elk Hunting Season

Switzer presented the recommended changes in the prairie elk hunting season as specified below

1. Adjust the number of licenses available from 48 "any elk" and 50 "antlerless elk" licenses (total of 98 licenses) to 59 "any elk" and 90 "antlerless elk" licenses (total of 149 licenses).
2. Add that portion of Meade County north of the existing unit boundary, east of Interstate 90, south of SD Highway 34, and west of Middle Alkali Road to Unit 9A (See attached map). The Fort Meade Bureau of Land Management South Unit would be restricted to archery hunting only.
3. Change the season dates for Unit 15A from the second Saturday in September to October 31 and from December 1-31 to September 1 to October 31 and from December 1-31.
4. Change the season dates for Unit 27A from September 1 to October 31 to October 1-31 and December 1-31.
5. Remove the language in administrative rule depicting the license type and number of licenses from each hunting unit.

Motioned by Phillips with second by Spies TO APPROVE THE PROPOSAL AS RECOMMENDED. Motion carried unanimously.

Custer State Park Elk Hunting Season

Switzer presented the recommended changes to adjust the number of licenses available from 8 any elk to 9 any elk licenses and to remove the language in administrative rule depicting the license type and number of licenses from each hunting unit.

Motioned by B. Jensen with second by Cooper TO APPROVE THE PROPOSAL AS RECOMMENDED. Motion carried unanimously.

Custer State Park Early Archery Elk Hunting Season

The recommended change to adjust the number of licenses available from 4 any elk to 3 any elk and removal of the language in administrative rule depicting the license type and number of licenses from each hunting unit was presented by Switzer

Motioned by Olson with second by Phillips TO APPROVE THE PROPOSAL AS RECOMMENDED. Motion carried unanimously.

Special Custer State Park Antlerless Elk Hunting Season

Switzer presented the recommended changes in the special Custer State Park antlerless elk hunting season as specified below

1. Modify the unit boundary of CAE-CU1 and CAE-CU2 from within the boundaries of Custer State Park (CSP) to all of Custer State Park south and west of line beginning at the CSP west boundary and Lower French Creek Road southeast to Highway 87, north to Wildlife Loop Road (WL), southeast along WL to Oak Draw Road, east on Oak Draw Road to WL, south on WL to Lane Johnny Road, southeast on Lane Johnny Road to CSP east boundary fence, south then west then north along the CSP boundary fence to point of beginning.
2. Change the season dates for CAE-CU1 from nine consecutive days beginning on the first Thursday following the third Saturday of September to nine consecutive days beginning on the third Saturday following the third Saturday in September and for CAE-CU2 from nine consecutive days beginning on the Tuesday following Native American Day to nine consecutive days beginning on the fifth Saturday following the third Saturday in September.
3. Increase the number of "antlerless elk" licenses from 0 to 20.
4. Repeal Unit CAE-ZZ1.
5. Remove the language in administrative rule depicting the license type and number of licenses from each hunting unit.

Motioned by Dennert with second by Olson TO APPROVE THE PROPOSAL AS RECOMMENDED. Motion carried unanimously.

Administrative Rule

Kirschenmann recommended that the Commission take administrative action to propose the unit-specific allocations of elk hunting licenses

Motioned by Spies with second by Cooper TO APPROVE THE PROPOSAL AS RECOMMENDED. Motion carried unanimously.

Goose Hunting Season

Switzer presented the recommended changes to remove Brookings, Brown, Clark, Codington, Day, Deuel, Hamlin, Hanson, Hutchinson, Grant, Kingsbury, Lake, Lincoln, Marshall, McCook, Miner, Minnehaha, Moody, Roberts, Spink, Turner and Union counties from the open area.

Motioned by Phillips with second by Dennert TO APPROVE THE PROPOSAL AS RECOMMENDED. Motion carried unanimously.

Early Fall Canada Goose and Waterfowl Hunting Season

Switzer presented the recommended changes amend 41:06:16:07 to modify the boundaries of Unites 1 and 2 by adding those portions of Yankton, Clay and Union counties near the Missouri River to Unit 2 and change the start date from September 1 to the first Saturday of September.

Motioned by B. Jensen with second by Cooper TO APPROVE THE PROPOSAL AS RECOMMENDED. Motion carried unanimously.

Duck and Goose Hunting Seasons

Switzer provided an overview of the season dates and daily limits for the 2016 and 2017 duck and goose hunting seasons noting no changes were recommended from the previous year. No action was required and none was taken.

Minimum Standard for Hunting with Air Guns

Andy Alban, program administrator provided the recommended change to decrease the muzzle velocity in factory-rated air guns from 1,000 to 600 feet per second when hunting cottontail rabbit, red squirrel, fox squirrel, grey squirrel, and species defined as a predator/varmint in 41-1-1.

Motioned by Dennert with second by G. Jensen TO APPROVE THE PROPOSAL AS RECOMMENDED. Motion carried unanimously.

Allowance for Trail Cameras on Public Land

Alban presented the recommended changes in the allowance for trail cameras on public land as specified below

- 1.) Amend 41:03:01:02 to address property that may be left on department lands.
- 2.) Amend 41:03:01:19 to create an allowance for portable blinds on department lands and regulate their placement.
- 3.) Promulgate a new rule to create an allowance for trail cameras on department lands and regulate their placement.

Motioned by Cooper with second by Olson TO APPROVE THE PROPOSAL AS RECOMMENDED. Motion carried unanimously.

Application for Elk License

Leif and Simpson presented a recommended amendment the current administrative rule to allow an individual to use preference points in the second drawing for elk hunting seasons if they choose. This change would allow GPF to implement a system to move more people through the system and for a fair allocation of licenses. The tier system would not apply to this system. This change would only apply to Black Hills, archery, and prairie elk hunting seasons.

Motioned by G. Jensen with second by Cooper TO AMEND THE ELK LICENSE APPLICATION PROCESS TO ALLOW FOR THE ACCUMULATION AND UTILIZATION OF PREFERENCE POINTS. Motion carried unanimously.

PETITION FOR RULE CHANGE

Director Leif explained that the petition received to propose changes to ARSD 41:06:16:11(5) – reduce 3-day temporary nonresident waterfowl licenses in Unit NRW-00X from 1,500 to 300 licenses submitted by Chris Hesla, Executive Director of the SD Wildlife Federation was withdrawn because any action by the Commission at this point would become null and void on July 1, 2016 when the passed legislation would take effect. The withdrawal is only based on the procedural issue not option or merit. Therefore no action is required at this time.

OPEN FORUM

Steve Nelson spoke on behalf of the SD Migratory Bird Association about their concerned with licenses available for the five river counties noting his associations testified against HB 1075 An act to revise the area for certain open units where nonresident waterfowl licenses are issued.

DIVISION OF PARKS AND RECREATION

Oahe Downstream Concession

Sean Blanchette, concessions manager provided background on the concession at Oahe Marina and Downstream noting facilities and services available as well as details on the current lease set to expire in 2041. As no bids were received from the last prospectus, Blanchette presented a request from resort owner Steve Rounds to reissue a new prospectus for sale of the resort. He noted that no changes were made from the prospectus presented at the November Commission meeting except to extend the offering for another 45 day period allowing interested parties time to submit proposals. To date no proposals have been received and they are requesting a third prospectus for 90 days at reduced price with draft concession ten year lease. The new reduced price is less than the existing appraisal. The Department would require a new appraisal before a 4th prospectus would be issued as the existing appraisal is 17 months old.

Motioned by Cooper with second by Dennert. TO AUTHORIZE THE DEPARTMENT TO ISSUE AND ADVERTISE A PROSPECTUS FOR THE SALE OF OAHE MARINA. (Olson abstained) Motion carried.

Roy Lake Concession

Sean Blanchette, concessions manager provided background on the concession noting facilities and services available at Roy Lake. Also provided was a 3rd request from resort owner Jan Pitzl to reissue a prospectus for sale of the resort at the offering price of \$975,000 for another 60 day period allowing interested parties to submit proposals. Blanchette noted there has been some interest in the purchase of the concession but no proposals have been received.

Motioned by G. Jensen with second by Dennert TO AUTHORIZE THE DEPARTMENT TO ISSUE AND ADVERTISE A PROSPECTUS FOR THE SALE OF ROY LAKE. Motion carried unanimously.

Bureau of Reclamation Cabin Lot Rent Appraisals

Doug Hofer and David Rosenkrance, and Joe Hall with the Bureau of Reclamation were in attendance to provide the Commission with information the on market rent survey for cabins and trailer sites situated around Angostura and Shadehill and steps that will need to be taken to implement the proposed rates. Hofer noted the assessed increases are significant and the Bureau of Reclamation has granted the option to phase these rates in over a three year period as well as the opportunity for permit holder to challenge the surveys through independent appraisals. Letters have been sent to all cabin and trailer owners informing them of the market rate surveys. Public meetings will be held at both Angostura and Shadehill to allow permit holders an opportunity to voice their concerns and questions.

Good Earth State Park Visitors Center Film

Hofer provided an update indicating that the Department received over 40 proposals from the Good Earth State Park Visitor Center film RFP that was issued earlier. Those proposals were evaluated and narrowed down to 3 who participated in the interview process. Fourth Wall Films of Moline, Illinois, was selected as the film production company. They will work with the tribes to interpret the site and tell the tribes' stories about their ancestors. Fourth Wall demonstrated the expertise to handle the subject matter, as well as a great passion for the story. They previously produced a documentary on the Ioway tribe, so they are already somewhat familiar with the story and key resources. Fourth Wall has begun the research and development stage, with shooting to start later this spring. Next week Iowa will hold master planning meeting with tribal people in exhibit planning and the film company. Estimated completion of the project is spring of 2017.

Spearfish Canyon Land Donation

Hofer informed the Commission that the purchase of Spearfish Falls property from Homestake Mining Company closed on Monday of this week. He explained that everything is now done in regards to the purchase and the intent to get started this spring on getting the bridge that washed out repaired with the help of the National Guard and reopen the hiking trail for visitors wishing to view Spearfish Falls. The Division of Parks and Recreation anticipates that this work will be completed during the coming summer

The Spearfish Canyon Foundation has offered to donate a 34 acre parcel of land near hydro 2 in Lawrence county that they would like to gift to the Department. It was noted that this land should remain public property but could possibly be utilized in a land trade with the Forest Service in regards to the Spearfish Canyon State Park

Camping Reservation Report

Division Staff Specialist Lynn Spomer explained the effects of the \$2.00 surcharge for camping reservations. As expected, a shift from reservations being made through the call center to more reservations being made on-line is occurring. Spomer indicated the savings in just two weeks has been 75 hours in the call center. The goal is to see 80 percent of reservation go through the online system compared to the 62 percent in 2015. To aid in this new change the department created a step by step video that has been posed online. Security updates due to regulations and people not using current browsers has caused some technical difficulties, but staff have been assisting customers specifically showing them how to utilize the on-line reservation system. Regardless the phone option will continue to be available for those that prefer to make reservations through the call center.

Spomer also provided the year to date comparison of park camping reservations. Reservations during the first two months of the year are running at about the same pace as last year's record breaking year for statewide campground use.

DIVISION OF WILDLIFE

Land Acquisition Guidance Document Update

Paul Coughlin, program administrator provided the Commission with the wildlife divisions land acquisition priorities and guidelines. The established priorities are: additions to existing game production areas and water access areas, lake and river access, and important habitat types, landscapes and recreational opportunities. The guidelines utilized when conducting land acquisitions are in regards to: process, economics and land ownership and stewardship. Coughlin provided a powerpoint that explained the timeline of the process noting the department only works with willing sellers utilizing market value in negotiating a purchase price. Also provided was the number of land acquisitions over the last 20 years and land management information.

Statewide Fisheries Management Plan Implementation Update

Fisheries Chief John Lott provided a powerpoint presentation to update the Commission on the statewide fisheries management plan. Lott's overview included objectives and accomplishments for each program for 2014 and 2015 and the components in the actual work plans and tools utilized to further complete objectives.

Missouri River Fisheries Management Plan Implementation Update

Chris Longhenry, senior biologist presented the Commission with a detailed update on the implementation of the Missouri River Fisheries management plan. The

powerpoint focused on the objectives and specific projects on lakes Oahe, Sharpe, Francis Case and Lewis and Clark.

Elk Management Plan Implementation Update

Chad Lindbloom, senior biologist and John Kanta, regional manager presented the Commission with an in depth update on the implementation of the elk management plan including results of the elk aerial survey results. Project highlights were provided on a majority of the 10 objectives and 60 strategies contained in the plan.

Pheasant Management Plan Implementation Update

Travis Runia, senior biologist and Switzer presented the Commission with the pheasant management plan for 2016-2020. The plan consists of 5 goals with an emphasis on habitat. Detailed strategies developed for habitat, partnerships, public land, surveys and access were provided.

Results of Animal Damage Control Cooperator Survey Results

Due to time restraints this agenda item will be presented at the April meeting

Enemy Swim and Stony Point Update

Due to time restraints this agenda item will be presented at the April meeting

2016 License sales report

Leif provided the Commission licensed sales report at of February 25 for resident and nonresident by license type.

Adjourn

Motioned by B. Jensen with second by Cooper TO ADJOURN THE MEETING. Motion carried unanimously and the meeting adjourned at 12:00 p.m.

Public Hearing Minutes of the Game, Fish and Parks Commission
March 3, 2016

The Public Hearing Officer Scott Simpson began the public hearing at 2:03 p.m. at the RedRossa in Pierre, South Dakota with Commissioners Cooper, Dennert, Peterson, Jensen, Jensen, Phillips, and Spies present. Simpson indicated written comments were provided to the Commissioners prior to this time and will be reflected in the Public Hearing Minutes. Simpson then invited the public to come forward with oral testimony.

Resolutions for Allocations of Limited-draw Hunting and Paddlefish Licenses

No oral or written testimony was received

Repeal of Dry Creek Waterfowl Refuge in Sully County

Chris Hesla, Executive Director of the SD Wildlife Federation was present to support the repeal of Dry Creek State Waterfowl Refuge to see it opened back up to public hunting.

No written testimony was received.

The public Hearing concluded at 2:12 p.m.

Respectfully Submitted,

Kelly R. Hepler, Department Secretary

5

**GAME, FISH, AND PARKS COMMISSION ACTION
FINALIZATION**

**Custer State Park Non-Trophy Bison Harvest
Chapter 41:06:60**

Commission Meeting Dates:	Proposal	March 3-4, 2016	Pierre
	Public Hearing	April 7, 2016	Brookings
	Finalization	April 7-8, 2016	Brookings

COMMISSION PROPOSAL

Season Dates: 47 Days beginning the 2nd Monday in January.

Licenses: 15 non-trophy bull bison, 5 cow bison permits.

Requirements and Restrictions:

- 1) The unit is open within the boundaries of Custer State Park for a 47-day period beginning the 2nd Monday of January (Jan 9 – Feb 24, 2017, Jan 8 – Feb 23, 2018).
- 2) Permit holders are restricted to one day for the harvest and must arrange hunting date with the Custer State Park Office.
- 3) Each permit holder shall be accompanied by an authorized Custer State Park official while hunting.
- 4) Seven non-trophy bull bison and three cow bison licenses allocated to residents in a first draw.

Recommended changes from last year: Change season dates from 47 days beginning the 4th Monday in January to 47 days beginning the 2nd Monday in January. Reduce the number of cow licenses from ten to five.

DEPARTMENT RECOMMENDATION

Recommended changes from proposal: None.

SUPPORTIVE INFORMATION

Changes Custer State Park made to bison handling protocols in 2015 allowed moving the non-trophy hunts to January. Additionally, CSP will be moving the annual bison auction from a live auction to a video/internet auction in 2016. Due to these scheduling changes, we have the opportunity to move the non-trophy season 2 weeks earlier in the season. This will reduce any issues with hide condition of animals harvested near the end of the non-trophy season. Cow bison for the non-trophy season are sorted when the herd is handled and sorted for the auction in October. Cows selected for hunts are cows that are open and dry (not nursing). This prevents orphaning any retained calves and prevents us from shooting bred cows during the non-trophy season. Cows are also selected based upon intact horns and adequate body condition. A reduction in cow tags is warranted due to an inability to select sufficient cows in this classification to support 10 hunts, leading to the potential of shooting bred cows during the season. These changes will allow ample time to accommodate both the trophy hunts and the non-trophy hunts, lead to a reduction in end-of-season harvested animals slipping hair, and harvesting bred cows.

APPROVE _____ **MODIFY** _____ **REJECT** _____ **NO ACTION** _____

**GAME, FISH AND PARKS COMMISSION ACTION
FINALIZATION**

6

**Black Hills Elk Hunting Season
Chapter 41:06:26**

Commission Meeting Dates:	Proposal	March 3-4, 2016	Pierre
	Public Hearing	April 7, 2016	Brookings
	Finalization	April 7-8, 2016	Brookings

COMMISSION PROPOSAL

Duration of Recommendation: 2016 and 2017 hunting seasons.

Season Dates:

	2016 Hunting Season Dates	2017 Hunting Season Dates
Any Elk Units	October 1 - 31	October 1 - 31
Antlerless Elk Units: H1B, H7B, and H9B	October 17 - 31 AND December 1 -16	October 16 - 31 AND December 1 -15
Antlerless Elk Units: H2B, H2E, H2H, H3B and H3E	October 17-31	October 16-31
Antlerless Elk Units: H2C, H2F, H2I, H3C and H3F	December 1-16	December 1-15
Antlerless Elk Units: H2D, H2G, H2J, H3D and H3G	December 17-31	December 16-31

Open Area: See attached maps.

Licenses: 443 "any elk" and 1,255 "antlerless elk" licenses (total of 1,698 licenses)

Requirements and Restrictions:

1. No person may possess more than one (1) elk license of any type in a year.
2. No more than two persons may submit applications together.
3. Except for landowner/operator preference applicants, no person who receives a license in the first drawing for this season shall be eligible to apply for a Black Hills elk license in first drawings for the next 9 years.
4. One-half of the licenses allocated in each unit are available for landowner/operator preference. One member of each qualifying landowner/operator household may apply every year.
5. Each elk harvested must be inspected by a Conservation Officer or designee within 24 hours after kill.

Proposed changes from last year:

1. Adjust the number of licenses available from 430 "any elk" and 500 "antlerless elk" licenses (total of 930 licenses) to 443 "any elk" and 1,255 "antlerless elk" licenses (total of 1,698 licenses).
2. Make adjustments to existing antlerless hunting units and create new antlerless hunting units.
3. Season dates for units H2B, H2E, H2H, H3B, and H3E would run from the Monday closest to October 15 through October 31.
4. Season dates for units H2C, H2F, H2I, H3C, and H3F would run from December 1 through the Friday closest to December 15.
5. Season dates for units H2D, H2G, H2J, H3D, and H3G would run from Saturday closest to December 15 through December 31.
6. Remove the language in administrative rule depicting the license type and number of licenses from each hunting unit.

APPROVE _____ **MODIFY** _____ **REJECT** _____ **NO ACTION** _____

DEPARTMENT RECOMMENDATION

Recommended changes from proposal: None.

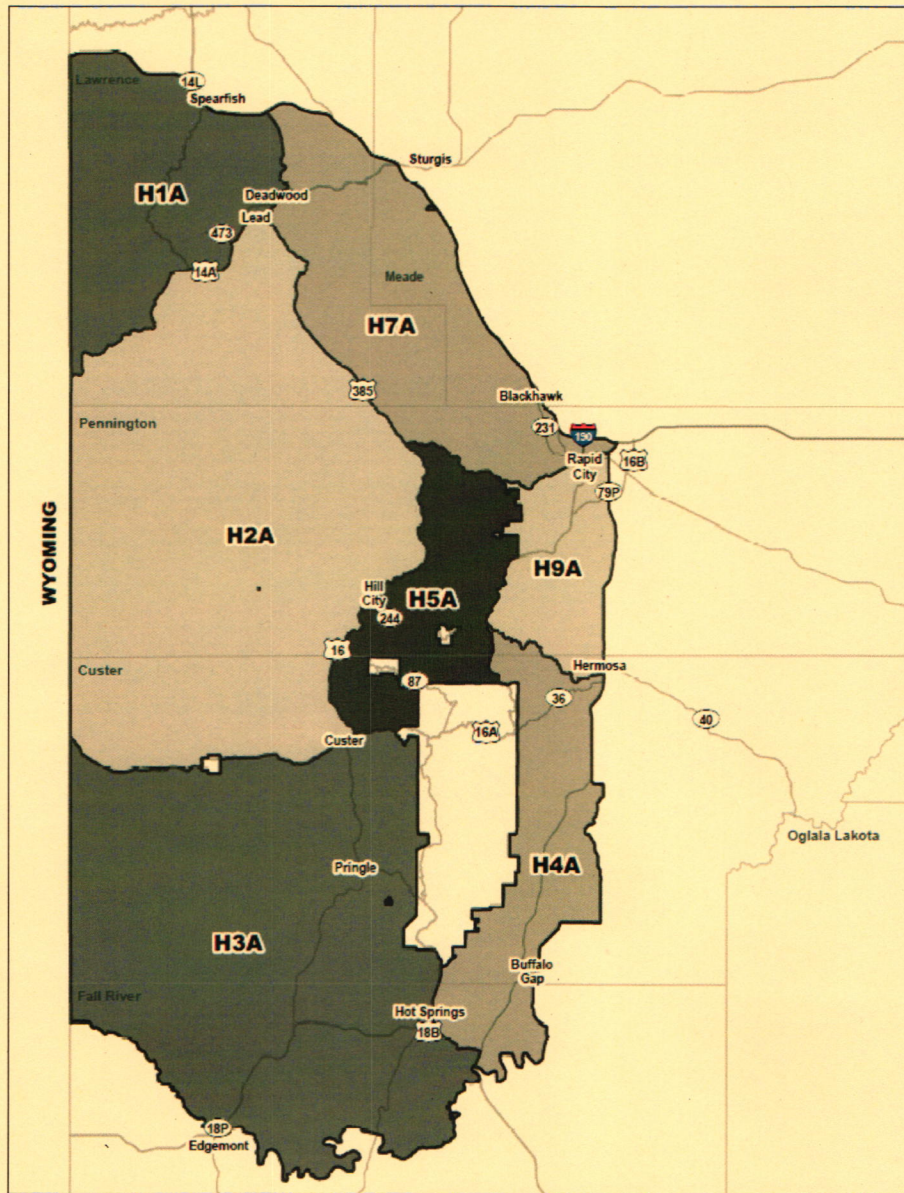
SUPPORTIVE INFORMATION

Year	Licensed Hunters	Hunter Success	Bulls Harvested	Cows Harvested
2011	866	55%	298	179
2012	570	73%	295	121
2013	620	60%	273	99
2014	664	71%	299	174
2015	922	71%	312	345

2015	"Any Elk"					"Antlerless Elk"					
	Unit	Appl.1st Choice	Licensed Hunters	Harvest Success	Bulls Harvested	Cows Harvested	Appl.1st Choice	Licensed Hunters	Harvest Success	Bulls Harvested	Cows Harvested
	H1	1,178	75	61%	40	4	65	40	35%	1	13
	H2	8,663	249	84%	182	26	545	395	71%	12	268
	H3	1,268	80	74%	52	7	85	58	42%	1	23
	H4	NA	NA	NA	NA	NA	NA	NA	NA	NA	NA
	H5	51	5	80%	4	0	NA	NA	NA	NA	NA
	H7	248	15	100%	14	1	NA	NA	NA	NA	NA
	H9	23	5	100%	5	NA	NA	NA	NA	NA	NA

APPROVE _____ MODIFY _____ REJECT _____ NO ACTION _____

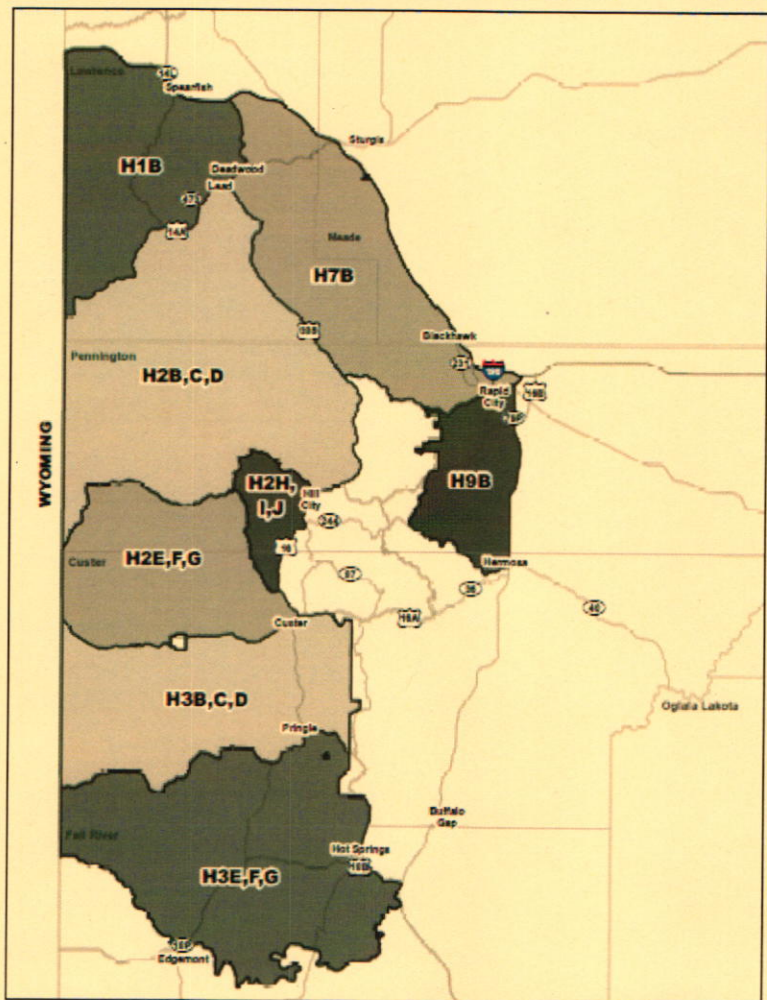
BLACK HILLS "ANY" ELK UNITS



Unit	2015	2016 & 2017
	"Any" Elk Licenses	"Any" Elk Licenses
H1A	75	75
H2A	250	250
H3A	80	80
H4A	0	8
H5A	5	5
H7A	15	20
H9A	5	5
Total	430	443

loc

BLACK HILLS "ANTLERLESS" ELK UNITS



Unit	2015 "Antlerless" Elk Licenses	2016 & 2017 "Antlerless" Elk Licenses
H1B	40	30
H2B		200
H2C	150	150
H2D		50
H2E	250	200
H2F		200
H2G		125
H2H		25
H2I		25
H2J		25
H3B		15
H3C		15
H3D		15
H3E	60	50
H3F		50
H3G		50
H7B		20
H9B		10
TOTAL	500	1,255

60d

**GAME, FISH AND PARKS COMMISSION ACTION
FINALIZATION**

Archery Elk Hunting Season

Chapter 41:06:43

Commission Meeting Dates:	Proposal	March 3-4, 2016	Pierre
	Public Hearing	April 7, 2016	Brookings
	Finalization	April 7-8, 2016	Brookings

COMMISSION PROPOSAL

Duration of Recommendation: 2016 and 2017 hunting seasons.

Season Dates: Black Hills Units: September 1-30, 2016
September 1-30, 2017

Open Area: See attached map

Licenses: 147 "any elk" and 140 "antlerless elk" licenses (total of 287 licenses)

Requirements and Restrictions:

1. No person may possess more than one (1) elk license of any type in a year.
2. No more than two persons may submit applications together.
3. Except for landowner/operator preference applicants, no person who receives a license in the first drawing for this season shall be eligible to apply for an archery elk license in first drawings for the next 9 years.
4. One-half of the licenses allocated in each unit are available for landowner/operator preference application. One member of each qualifying landowner/operator household may apply every year.
5. Each elk harvested must be inspected by a Conservation Officer or designee within 24 hours after kill.
6. Each unsuccessful hunter must mail the report card to the Department of Game, Fish and Parks within 10 days after the close of the season.

Proposed changes from last year:

1. Adjust the number of licenses available from 144 "any elk" and 56 "antlerless elk" licenses (total of 200 licenses) to 147 "any elk" and 140 "antlerless elk" licenses (total of 287 licenses).
2. Remove the language in administrative rule depicting the license type and number of licenses from each hunting unit.

DEPARTMENT RECOMMENDATION

Recommended changes from proposal: None.

SUPPORTIVE INFORMATION

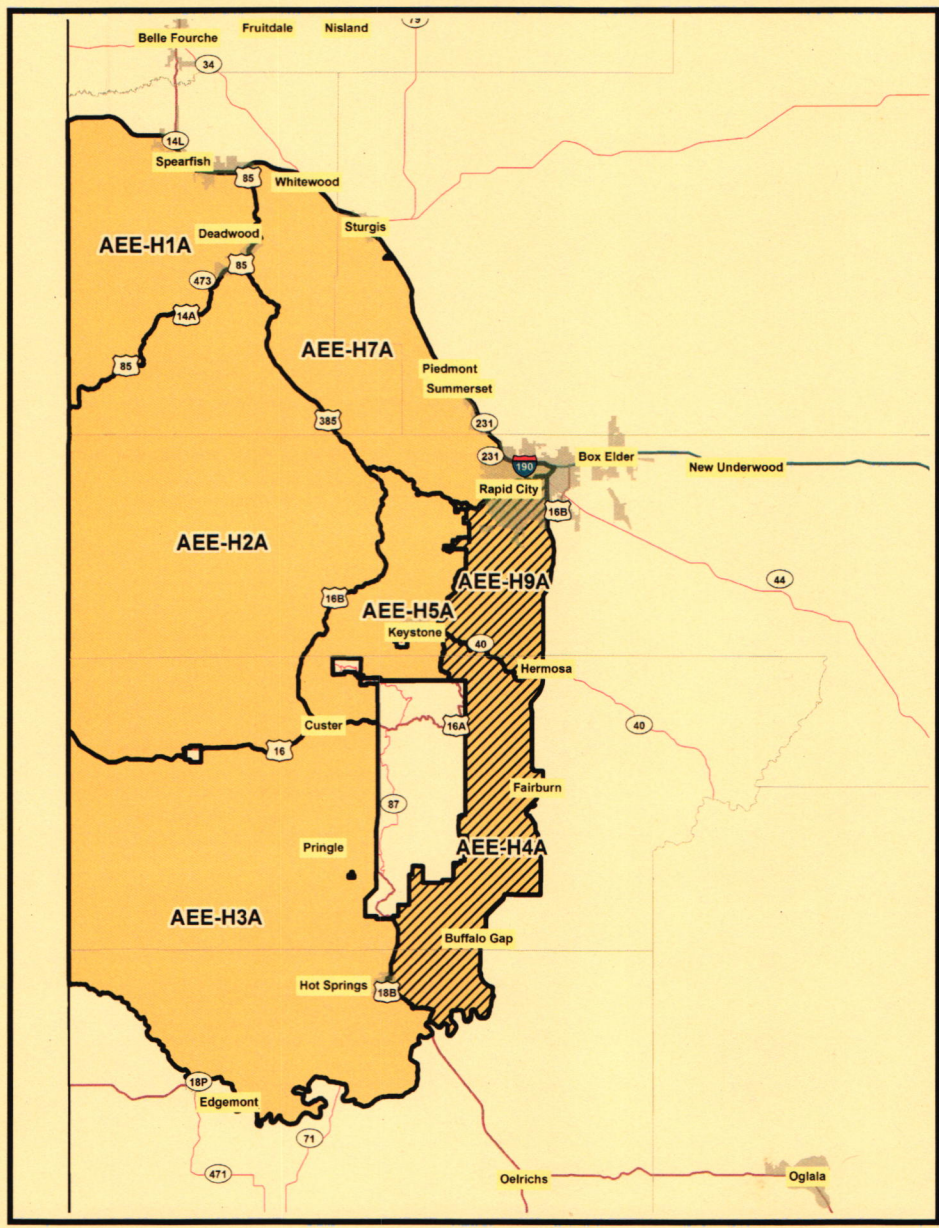
Year	Licensed Hunters	Hunter Success	Bulls Harvested	Cows Harvested
2011	126	26%	25	8
2012	97	40%	34	4
2013	107	35%	34	3
2014	106	39%	38	4
2015	196	34%	54	12

2015 Unit	"Any Elk"					"Antlerless Elk"				
	Appl. 1st Choice	Licensed Hunters	Harvest Success	Bulls Harvested	Cows Harvested	Appl. 1st Choice	Licensed Hunters	Harvest Success	Bulls Harvested	Cows Harvested
H1	627	25	38%	8	1	10	5	20%	1	0
H2	3,473	85	44%	36	1	60	43	23%	0	10
H3	448	27	28%	8	0	4	4	0%	0	0
H4	NA	NA	NA	NA	NA	NA	NA	NA	NA	NA
H5	29	2	0%	0	0	NA	NA	NA	NA	NA
H7	110	5	33%	2	0	NA	NA	NA	NA	NA
H9	NA	NA	NA	NA	NA	NA	NA	NA	NA	NA

APPROVE _____ **MODIFY** _____ **REJECT** _____ **NO ACTION** _____

6e

BLACK HILLS ARCHERY ELK UNITS



Unit	2015			2016 & 2017		
	"Any" Elk Tags	"Antlerless" Elk Tags	Total Tags	"Any" Elk Tags	"Antlerless" Elk Tags	Total Tags
H1	25	5	30	25	10	35
H2	85	44	129	90	115	165
H3	27	7	34	25	10	35
H4	0	0	0	0	0	0
H5	2	0	2	2	0	2
H7	5	0	5	5	5	10
H9	0	0	0	0	0	0
TOTAL	144	56	200	147	140	287

60f

**GAME, FISH AND PARKS COMMISSION ACTION
FINALIZATION**

**Prairie Elk Hunting Season
Chapter 41:06:59**

Commission Meeting Dates:	Proposal	March 3-4, 2016	Pierre
	Public Hearing	April 7, 2016	Brookings
	Finalization	April 7-8, 2016	Brookings

COMMISSION PROPOSAL

Duration of Recommendation: 2016 and 2017 hunting seasons.

Season Dates:

Unit	2016 Hunting Season Dates	2017 Hunting Season Dates
9A	September 15 - October 31 AND December 1 - 31	September 15 - October 31 AND December 1 - 31
11A	July 15 - August 31	July 15 - August 31
11B	September 1 - October 14	September 1 - October 20
11C	October 15 - November 30	October 14 - November 30
11D	September 1 - December 31	September 1 - December 31
15A	September 1 - October 31 AND December 1 -31	September 1 - October 31 AND December 1 -31
27A	October 1 - 31 AND December 1 -31	October 1 - 31 AND December 1 -31
30A	CLOSED	CLOSED

Open Area:

Unit 09A	Portions of Butte, Lawrence and Meade counties
Unit 11A,B,C,D	Bennett County; portions of Jackson and Mellette counties
Unit 15A	Portions of Butte County
Unit 27A	Portions of Fall River County
Unit 30A	Portions of Gregory County

Licenses:

Unit 09A	10 "any elk" and 40 "antlerless elk" licenses
Unit 11A,B,C,D	24 "any elk" and 30 "antlerless elk" licenses
Unit 15A	10 "any elk" and 10 "antlerless elk" licenses
Unit 27A	15 "any elk" and 10 "antlerless elk" licenses
Unit 30A	No licenses.

Requirements and Restrictions:

1. No person may possess more than one (1) elk license of any type in a year.
2. No more than two persons may submit applications together.
3. Except for landowner/operator preference applicants, no person who receives a license in the first drawing for this season shall be eligible to apply for a prairie elk license in first drawings for the next 9 years.
4. One-half of the licenses allocated in each unit are available for landowner/operator preference. One member of each qualifying landowner/operator household may apply every year.
5. Each elk harvested must be inspected by a Conservation Officer or designee within 24 hours after kill.

Proposed changes from last year:

1. Adjust the number of licenses available from 48 "any elk" and 50 "antlerless elk" licenses (total of 98 licenses) to 59 "any elk" and 90 "antlerless elk" licenses (total of 149 licenses).
2. Add that portion of Meade County north of the existing unit boundary, east of Interstate 90, south of SD Highway 34, and west of Middle Alkali Road to Unit 9A (See attached map). The Fort Meade Bureau of Land Management South Unit would be restricted to archery hunting only.
3. Change the season dates for Unit 15A from the second Saturday in September to October 31 and from December 1-31 to September 1 to October 31 and from December 1-31.
4. Change the season dates for Unit 27A from September 1 to October 31 to October 1-31 and December 1-31.
5. Remove the language in administrative rule depicting the license type and number of licenses from each hunting unit.

APPROVE _____ **MODIFY** _____ **REJECT** _____ **NO ACTION** _____

DEPARTMENT RECOMMENDATION

Recommended changes from proposal: None.

SUPPORTIVE INFORMATION

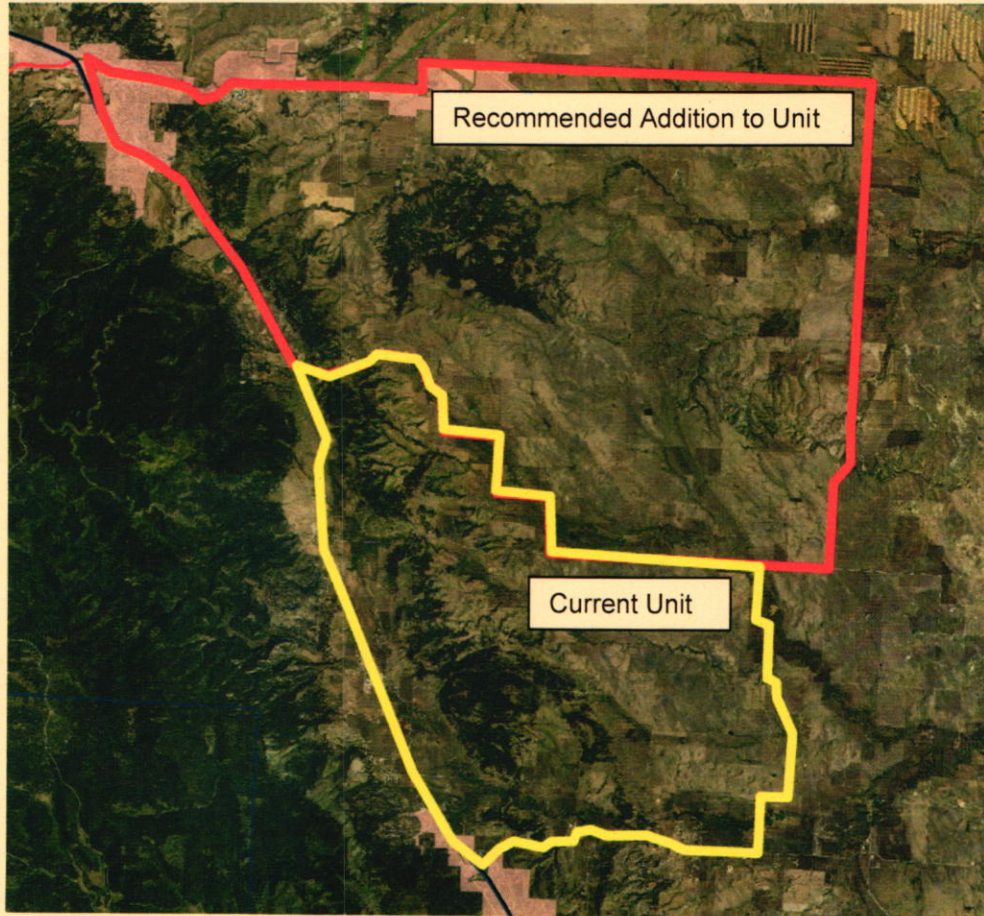
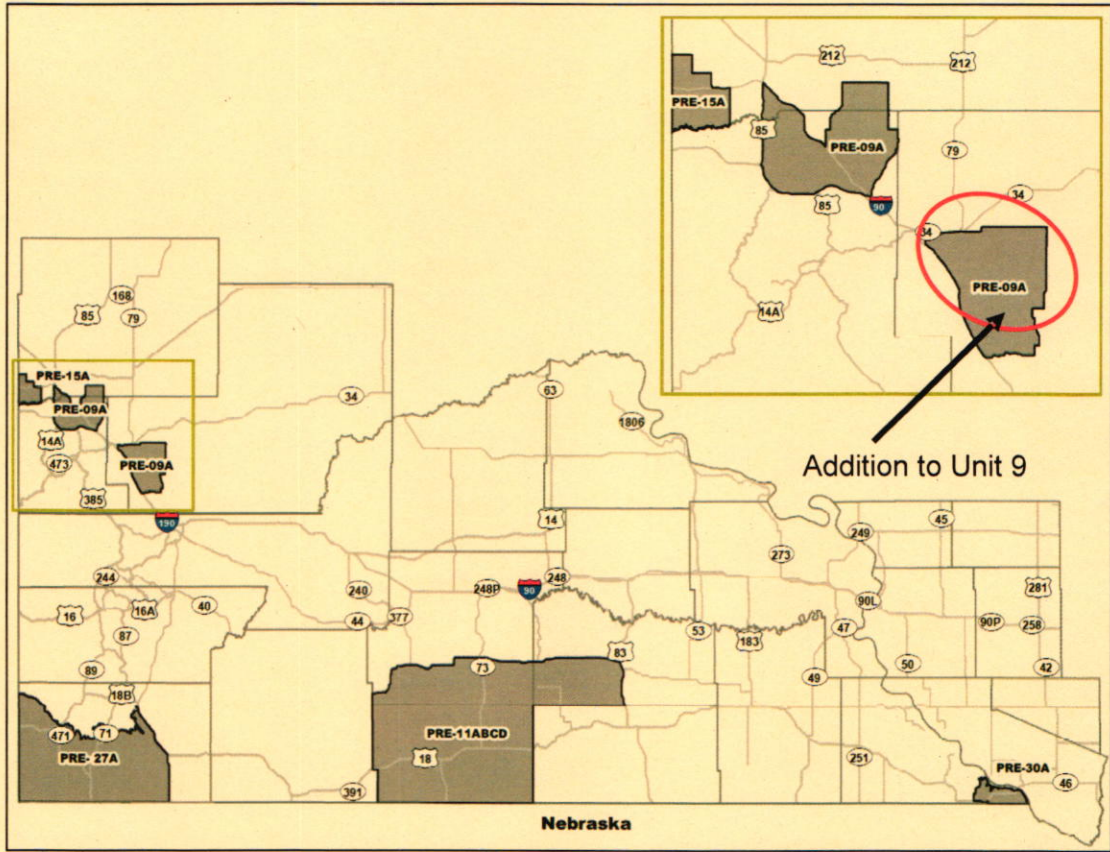
Year	Licensed Hunters	Hunter Success	Bulls Harvested	Cows Harvested
2011	128	28%	19	17
2012	97	46%	24	20
2013	96	34%	18	14
2014	92	68%	30	31
2015	98	55%	29	25

2015	"Any Elk"				"Antlerless Elk"			
	Licensed Hunters	Harvest Success	Bulls Harvested	Cows Harvested	Licensed Hunters	Harvest Success	Bulls Harvested	Cows Harvested
09A	10	60%	5	1	20	44%	1	8
11A	NA	NA	NA	NA	8	67%	0	5
11B	10	100%	9	1	NA	NA	NA	NA
11C	8	60%	5	0	NA	NA	NA	NA
11D	NA	NA	NA	NA	12	73%	0	9
15A	10	20%	2	0	10	10%	0	1
27A	10	80%	8	0	NA	NA	NA	NA
30A	NA	NA	NA	NA	NA	NA	NA	NA

APPROVE _____ MODIFY _____ REJECT _____ NO ACTION _____

Prairie Elk Units

leg



APPROVE MODIFY REJECT NO ACTION

leh

**GAME, FISH, AND PARKS COMMISSION ACTION
FINALIZATION**

**Custer State Park Elk Hunting Season (Any Elk)
Chapter 41:06:27**

Commission Meeting Dates:	Proposal	March 3-4, 2016	Pierre
	Public Hearing	April 7, 2016	Brookings
	Finalization	April 7-8, 2016	Brookings

COMMISSION PROPOSAL

Duration of Recommendation: 2016 and 2017 hunting seasons.

Season Dates: September 17 – October 2, 2016
September 16 – October 1, 2017

Licenses: 9 resident "Any Elk" licenses

Requirements and Restrictions:

- 1) The unit is open within the boundaries of Custer State Park for the 16-day period beginning the third Saturday of September.
- 2) Harvested elk must be inspected within 24 hours.

Proposed changes from last year:

1. Adjust the number of licenses available from 8 "any elk" to 9 "any elk" licenses.

DEPARTMENT RECOMMENDATION

Recommended changes from proposal: None.

SUPPORTIVE INFORMATION

Year	Licenses	Applicants	Success Rate
2006	41	11,709	95%
2007	41	12,768	93%
2008	36	12,572	97%
2009	36	13,063	86%
2010	21	13,065	80%
2011	11	12,060	91%
2012	4	11,133	100%
2013	4	12,888	100%
2014	4	11,762	100%
2015	8	9,136	100%

APPROVE _____ **MODIFY** _____ **REJECT** _____ **NO ACTION** _____

601

**GAME, FISH, AND PARKS COMMISSION ACTION
FINALIZATION**

**Custer State Park Early Archery Elk Hunting Season
Chapter 41:06:28**

Commission Meeting Dates:	Proposal March 3-4, 2016 Public Hearing April 7, 2016 Finalization April 7-8, 2016	Pierre Brookings Brookings
----------------------------------	--	---

COMMISSION PROPOSAL

Duration of Recommendation: 2016 and 2017 hunting seasons.

Season Dates: September 1-30, 2016
 September 1-30, 2017

Licenses: 3 "Any Elk" licenses

Requirements and Restrictions:

1. Season opens the first of September and closes the last day of September.
2. Harvested elk must be inspected within 24 hours.

Proposed changes from last year:

1. Adjust the number of licenses available from 4 "any elk" to 3 "any elk" licenses.

DEPARTMENT RECOMMENDATION

Recommended changes from proposal: None.

SUPPORTIVE INFORMATION

Year	Licensed Hunters	1 st Choice Applicants	Success Rate	Elk Harvested
2008	8	3,084	25%	2 bulls
2009	8	3,134	25%	2 bulls
2010	5	3,031	0%	None
2011	3	2,000	33%	1 bull
2012	3	2,078	0%	0
2013	3	2,740	100%	3 bulls
2014	4	3,023	100%	4 bulls
2015	4	3,600	75%	3 bulls

APPROVE _____ **MODIFY** _____ **REJECT** _____ **NO ACTION** _____

6j

**GAME, FISH, AND PARKS COMMISSION ACTION
FINALIZATION**

Special Custer State Park Antlerless Elk Hunting Season

Chapter 41:06:47

Commission Meeting Dates:	Proposal	March 3-4, 2016	Pierre
	Public Hearing	April 7, 2016	Brookings
	Finalization	April 7-8, 2016	Brookings

COMMISSION PROPOSAL

Duration of Recommendation: 2016 and 2017 hunting seasons.

Season Dates: CAE-CU1: October 8-16, 2016 and October 7-15, 2017
CAE-CU2: October 22-30, 2016 and October 21-29, 2017

Licenses: CAE-CU1: 10 "antlerless elk" licenses
CAE-CU2: 10 "antlerless elk" licenses

Proposed changes from last year:

1. Modify the unit boundary of CAE-CU1 and CAE-CU2 from within the boundaries of Custer State Park (CSP) to all of Custer State Park south and west of line beginning at the CSP west boundary and Lower French Creek Road southeast to Highway 87, north to Wildlife Loop Road (WL), southeast along WL to Oak Draw Road, east on Oak Draw Road to WL, south on WL to Lame Johnny Road, southeast on Lame Johnny Road to CSP east boundary fence, south then west then north along the CSP boundary fence to point of beginning.
2. Change the season dates for CAE-CU1 from nine consecutive days beginning on the first Thursday following the third Saturday of September to nine consecutive days beginning on the third Saturday following the third Saturday in September and for CAE-CU2 from nine consecutive days beginning on the Tuesday following Native American Day to nine consecutive days beginning on the fifth Saturday following the third Saturday in September.
3. Increase the number of "antlerless elk" licenses from 0 to 20.
4. Repeal Unit CAE-ZZ1.

DEPARTMENT RECOMMENDATION

Recommended changes from proposal:

1. Change the season dates for CAE-CU1 from nine consecutive days beginning on the first Thursday following the third Saturday of September to nine consecutive days following the close of CUE-CU1 and for CAE-CU2 from nine consecutive days beginning on the Tuesday following Native American Day to nine consecutive days beginning on the Saturday following the close of CAE-CU1.

SUPPORTIVE INFORMATION

Successful hazing of elk from Wind Cave National Park (WCNP) into CSP has led to a large concentration of these elk in the southern portion of CSP (RD Pasture). This herd numbers approximately 200 animals and they spend the majority of the year on the roughly 8 square mile RD pasture. Additionally, these elk spend roughly half their time on the east end of the RD (3.17 mi²). Elk densities of 25 to 60 elk/mi² create a concern for habitat conditions and disease. Continuous grazing during the growing season will lead to overutilization of forage and an eventual decline in condition and production. This pasture is also critical pasture for facilitating the buffalo roundup. Harvest during this season would be targeted at this herd of elk and will reduce densities in this area through harvest and dispersal. While the overall goal is to increase the elk population in CSP, this harvest strategy will provide antlerless elk reduction in a specific area of CSP.

APPROVE _____ **MODIFY** _____ **REJECT** _____ **NO ACTION** _____

Year	Licenses	Applicants	Success Rate	HRD
2006	100	4,105	73%	291
2007	60	4,339	57%	185
2008	40	4,383	59%	108
2009	20	4,546	95%	50
2010	5	4,420	80%	13
2011			CLOSED	
2012			CLOSED	
2013			CLOSED	
2014			CLOSED	
2015			CLOSED	

Proposed Boundary



APPROVE _____ MODIFY _____ REJECT _____ NO ACTION _____

GAME, FISH AND PARKS COMMISSION ADMINISTRATIVE ACTION

6K

Elk Hunting Seasons – Hunting Unit License Allocation

Commission Meeting Dates: Proposal March 3-4, 2016 Pierre
 Public Hearing April 7, 2016 Brookings
 Finalization April 7-8, 2016 Brookings

LICENSE ALLOCATION BY SEASONS AND UNITS

2016 and 2017 Elk Hunting Seasons

Black Hills Firearm Elk					Archery Elk				
Unit	Any Elk Licenses		Antlerless Elk Licenses		Unit	Any Elk Licenses		Antlerless Elk Licenses	
	2015	2016 & 2017	2015	2016 & 2017		2015	2016 & 2017	2015	2016 & 2017
H1A	75	75			H1A	25	25	5	10
H1B			40	30	H2A	85	90	44	115
H2A	250	250			H3A	27	25	7	10
H2B				200	H4A				
H2C				150	H5A	2	2		
H2D				50	H7A	5	5	0	5
H2E				200	H9A				
H2F			400	200	30A				
H2G				125	TOTAL	144	147	56	140
H2H				25	Prairie Elk				
H2I				25	Unit	Any Elk Licenses		Antlerless Elk Licenses	
H2J				25		2015	2016 & 2017	2015	2016 & 2017
H3A	80	80			9A	10	10	20	40
H3B				15	11A			8	10
H3C				15	11B	10	12		
H3D			60	15	11C	8	12		
H3E				50	11D			12	20
H3F				50	15A	10	10	10	10
H3G				50	27A	10	15	0	10
H4A	0	8			30A				
H5A	5	5			TOTAL	48	59	50	90
H7A	15	20			Custer State Park Elk				
H7B			0	20	Season	Any Elk Licenses		Antlerless Elk Licenses	
H9A	5	5				2015	2016 & 2017	2015	2016 & 2017
H9B			0	10	Archery	8	9		
TOTAL	430	443	500	1,255	Rifle	4	3		
					Special Antlerless Units				
					CAE-CU1			0	10
					CAE-CU2			0	10
					TOTAL	12	12	0	20

APPROVE _____ **MODIFY** _____ **REJECT** _____ **NO ACTION** _____

**GAME, FISH, AND PARKS COMMISSION ACTION
FINALIZATION**

7

**Application for License
Chapter 41:06:01**

Commission Meeting Dates:	Proposal	March 3-4, 2016	Pierre
	Public Hearing	April 7, 2016	Brookings
	Finalization	April 7-8, 2016	Brookings

COMMISSION PROPOSAL

Proposed changes from last year:

1. Amend current administrative rule to allow an individual to use preference points in the second drawing for elk hunting seasons.

DEPARTMENT RECOMMENDATION

Recommended changes from proposal: None.

SUPPORTIVE INFORMATION

Modifying the drawing system to allow individuals that have elk preference points for elk hunting seasons the alternative to use them in a second elk drawing will provide additional flexibility for individuals who have preference. This change will allow an individual to voluntarily use their preference points in a second drawing, but would require that individual, if successful in the second drawing, to relinquish any accumulated points and their eligibility for that season for 9 years.

2015 Black Hills Antlerless Elk 1st Drawing Statistics

Unit	Preference Points	Applicants
H1	2+	11
	0+	55
H2	10+	22
	2+	187
	0+	375
H3	10+	2
	2+	49
	0+	53
Total Applicants:		754

APPROVE _____ **MODIFY** _____ **REJECT** _____ **NO ACTION** _____

**GAME, FISH, AND PARKS COMMISSION ACTION
FINALIZATION**

8

**Goose Hunting Season
Chapter 41:06:16**

Commission Meeting Dates:	Proposal	March 3-4, 2016	Pierre
	Public Hearing	April 7, 2016	Brookings
	Finalization	April 7-8, 2016	Brookings

COMMISSION PROPOSAL

AUGUST MANAGEMENT TAKE

Duration of Recommendation: 2016 and 2017 hunting seasons.

Season Dates: August 20-31, 2016
August 19-31, 2017

Open Area: Pennington County west of the Cheyenne River.

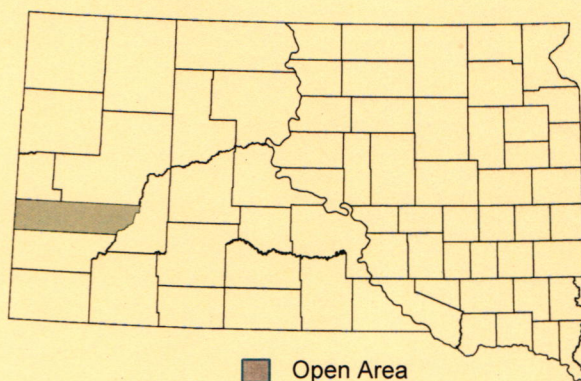
Daily Bag Limit: 15 Canada geese

Possession Limit: None

Licenses: Residents only

Requirements and Restrictions:

1. Annual small game or combination license and state migratory bird certification. Federal waterfowl stamp is not required.
2. Shooting hours are one-half hour before sunrise to sunset.
3. All other restrictions are the same as during the Early Fall and Regular Canada Goose Season.



Proposed changes from last year:

1. Remove Brookings, Brown, Clark, Codington, Day, Deuel, Hamlin, Hanson, Hutchinson, Grant, Kingsbury, Lake, Lincoln, Marshall, McCook, Miner, Minnehaha, Moody, Roberts, Spink, Turner and Union counties from the open area.

DEPARTMENT RECOMMENDATION

Recommended changes from proposal: None.

SUPPORTIVE INFORMATION

Field observations indicated resident and wintering Canada goose numbers have shown an increasing trend in the Rapid City area and there are public safety concerns for the Rapid City Regional Airport. Retaining the August Management Take in this portion of Pennington County is a harvest management tool to help address this concern.

Year	Number of Hunters	Ave. Days Hunted	Ave. Season Bag	Harvest
2010	3,538	2.99	8.21	29,047
2011	3,211	2.74	9.44	30,300
2012	3,581	3.08	10.26	36,757
2013	2,345	3.42	7.93	18,592
2014	2,302	3.24	8.98	20,671

APPROVE _____ **MODIFY** _____ **REJECT** _____ **NO ACTION** _____

Year	Number of Hunters	Ave. Days Hunted	Ave. Season Bag	Harvest
2010	3,538	2.99	8.21	29,047
2011	3,211	2.74	9.44	30,300
2012	3,581	3.08	10.26	36,757
2013	2,345	3.42	7.93	18,592
2014	2,302	3.24	8.98	20,671
2015	1,686	3.03	6.06	10,221

APPROVE _____ MODIFY _____ REJECT _____ NO ACTION _____

**GAME, FISH AND PARKS COMMISSION ACTION
FINALIZATION**

Sa

**Early Fall Canada Goose and Waterfowl Hunting Seasons
Chapters 41:06:50 and 41:06:16**

Commission Meeting Dates:	Proposal	March 3-4, 2016	Pierre
	Public Hearing	April 7, 2016	Brookings
	Finalization	April 7-8, 2016	Brookings

COMMISSION PROPOSAL

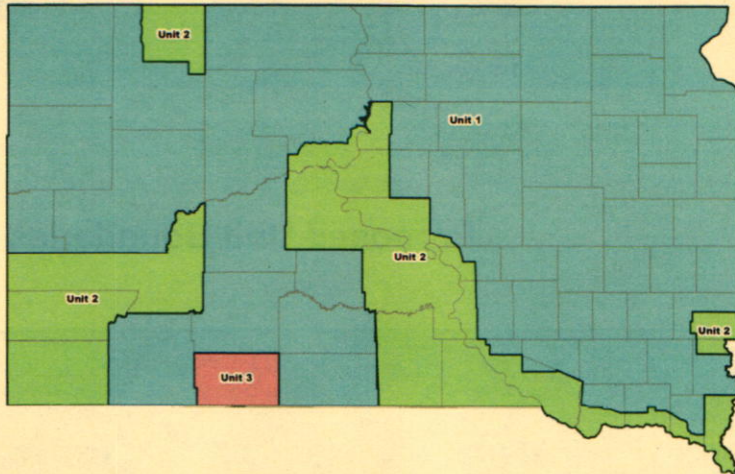
Duration of Recommendation: 2016 and 2017 hunting seasons.

Season Dates: September 3 - 30, 2016 **Open Area:** Unit 1 (see map below)
September 2 - 30, 2017

Daily Limit: 15 Canada Geese **Possession Limit:** 45 Canada Geese

Requirements and Restrictions:

1. Shooting hours are one-half hour before sunrise to sunset.



Proposed changes from last year:

1. Amend 41:06:16:07 to modify the boundaries of Units 1 and 2 by adding those portions of Yankton, Clay and Union counties near the Missouri River to Unit 2 (see attached map).
2. Change the start date from September 1 to the first Saturday of September.

DEPARTMENT RECOMMENDATION

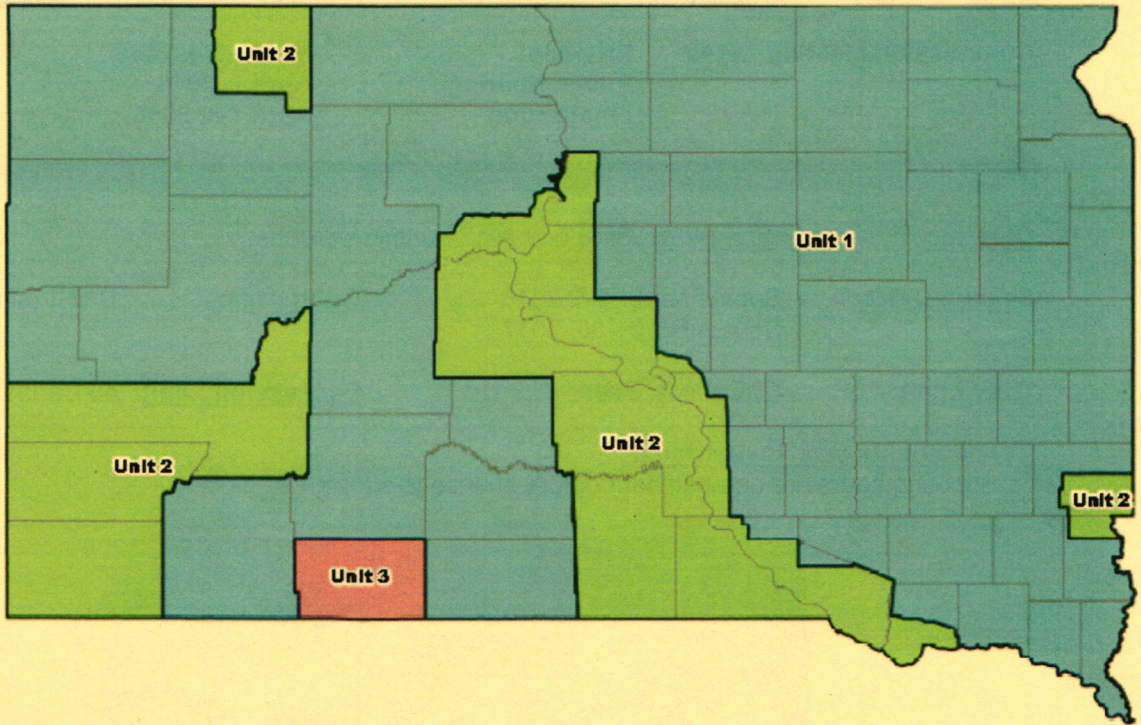
Recommended changes from proposal: None.

SUPPORTIVE INFORMATION

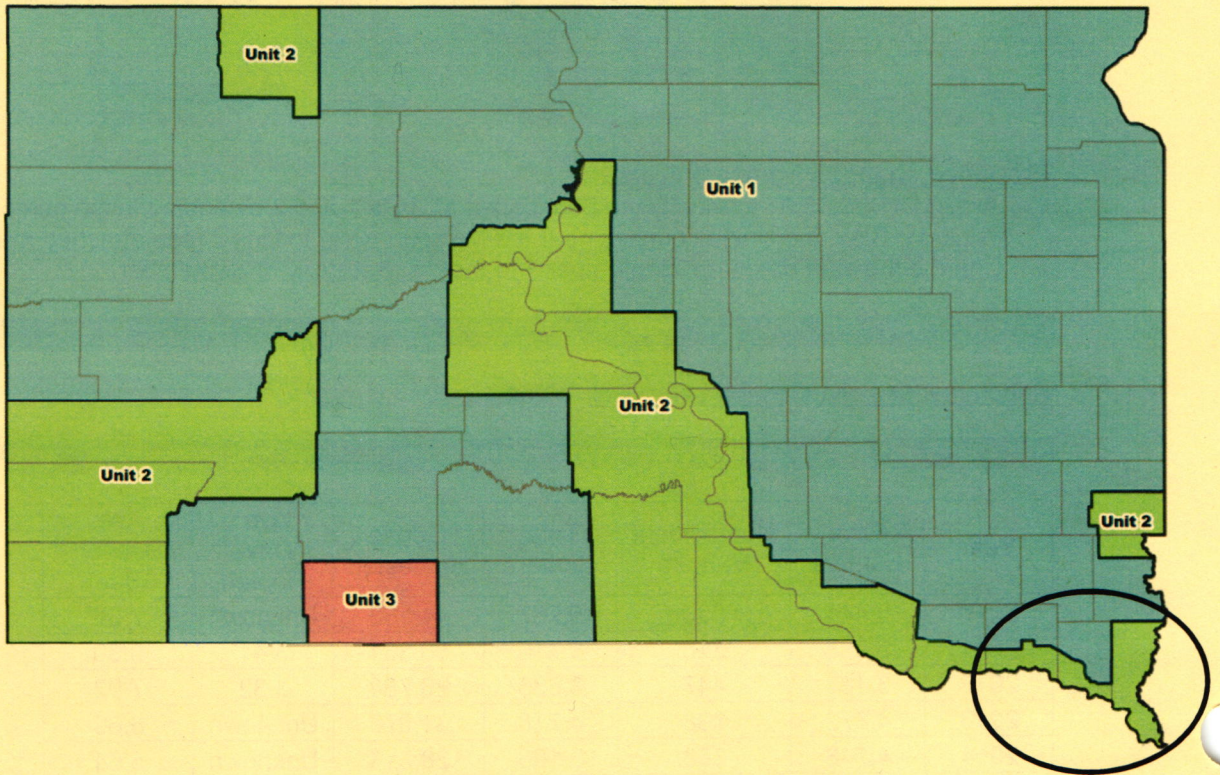
Year	Resident Hunters	Nonresident Hunters	Total Hunters	Geese Harvested	Ave. Days Hunted	Ave. Season Bag
2010	5,444	323	5,767	44,183	Unknown	7.66
2011	5,098	318	5,416	50,361	3.41	9.30
2012	3,189	447	3,636	28,788	3.32	7.92
2013	4,372	338	4,710	31,976	Unknown	6.60
2014	4,748	358	5,106	28,814	Unknown	5.64

APPROVE _____ **MODIFY** _____ **REJECT** _____ **NO ACTION** _____

Current Unit Boundaries

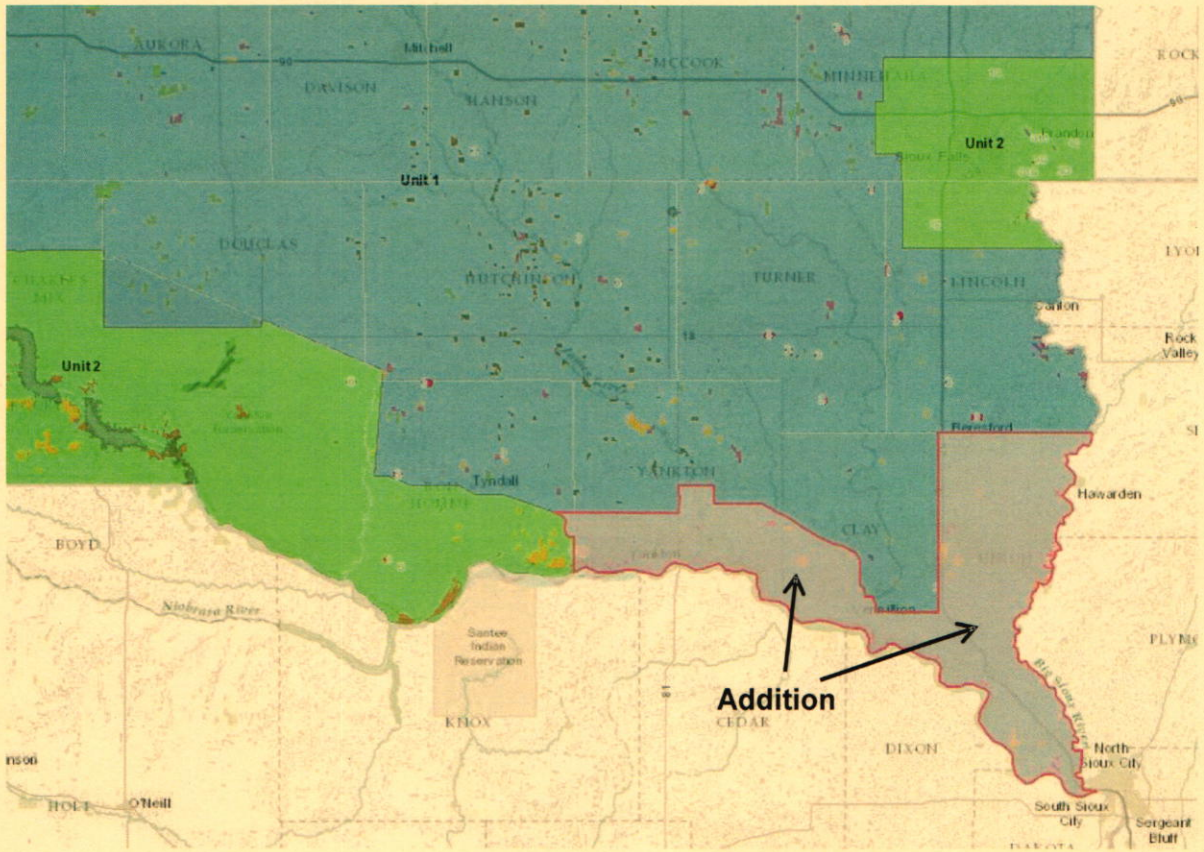


Proposed Unit Boundaries



APPROVE MODIFY REJECT NO ACTION

Addition to Unit 2



APPROVE _____	MODIFY _____	REJECT _____	NO ACTION _____
---------------	--------------	--------------	-----------------

GAME, FISH AND PARKS COMMISSION ACTION
FINALIZATION

HUNTING REQUIREMENTS AND PROHIBITED METHODS
CHAPTER 41:06:04

Commission Meeting Dates:	Proposal	March 3-4, 2016	Pierre
	Public Hearing	April 7, 2016	Brookings
	Finalization	April 7-8, 2016	Brookings

COMMISSION PROPOSAL

Amend 41:06:04:17 to address air gun performance specifications for hunting cottontail rabbit, squirrel and species defined as a predator/varmint.

Proposed changes:

41:06:04:17. Minimum air gun specifications. No person may hunt species listed in SDCL 41-8-31(1A) with an air gun that is factory-rated to produce a muzzle velocity of less than ~~4,000~~ 600 feet per second. Only hunting pellets are permitted.

DEPARTMENT RECOMMENDATION

Recommended changes from proposal: None.

SUPPORTIVE INFORMATION

Department-sponsored legislation (HB1006) was passed in 2011, legalizing air guns for small game mammals and predators/varmints. The GFP Commission, in June 2011, finalized a rule regarding air gun specifications that mandated the weaponry be factory-rated to produce a muzzle velocity of at least 1,000 feet per second. Agency representatives have recently been contacted by air gun enthusiasts wishing to use modern air guns that are more suited for hunting, but they do not meet the current specifications. The department recommends lowering the required muzzle velocity to 600 feet per second to accommodate more weapons for air gun hunting.

41-8-31. Hunting methods restricted--Violation as misdemeanor. No person may at any time hunt, catch, take, attempt to take, or kill any small game or game animal in any other manner than by shooting the same with a firearm, except:

(1) Game birds and animals may be taken with birds trained in falconry or with bow and arrow;

(1A) Cottontail rabbit, red squirrel, fox squirrel, grey squirrel, and any species defined as a predator/varmint in § 41-1-1 may be taken with an air gun that complies with specifications established by rules promulgated by the Game, Fish and Parks Commission pursuant to chapter 1-26;

(2) A person with a permanent or temporary disability who is missing an upper limb, physically incapable of using an upper limb, or confined to a wheelchair may obtain a disabled hunter permit to use a crossbow or other legal bow equipped with a draw-lock device to take game birds and animals;

(3) A person who is legally blind, is legally licensed, possesses a disabled hunter permit, and is physically present and participates in the hunt but cannot safely discharge a firearm or bow and arrow, may claim game birds and animals taken by a designated hunter in accordance with the license possessed by the hunter who is legally blind;

(3A) A person who is quadriplegic, is legally licensed, possesses a disabled hunter permit, and is physically present and participates in the hunt but cannot safely discharge a firearm or bow and arrow, may claim game birds and animals taken by a designated hunter in accordance with the license possessed by the hunter who is quadriplegic; and

(4) A person with a permanent or temporary disability as defined in subdivision (2) of this section who is legally licensed for a youth big game hunting season, possesses a disabled hunter permit, and is physically present and participates in the hunt but is unable to safely discharge a firearm or bow and arrow, may claim any big game animal taken by a designated hunter in accordance with the youth big game license possessed by the person with a permanent or temporary disability.

A violation of this section is a Class 2 misdemeanor.

APPROVE MODIFY REJECT NO ACTION

GAME, FISH AND PARKS COMMISSION ACTION
FINALIZATION

10

USES OF PARKS AND PUBLIC LANDS
CHAPTER 41:03:01

Commission Meeting Dates:	Proposal	March 3-4, 2016	Pierre
	Public Hearing	April 7, 2016	Brookings
	Finalization	April 7-8, 2016	Brookings

COMMISSION PROPOSAL

- 1.) Amend 41:03:01:02 to address property that may be left on department lands.
- 2.) Amend 41:03:01:19 to create an allowance for portable blinds on department lands and regulate their placement.
- 3.) Promulgate a new rule to create an allowance for trail cameras on department lands and regulate their placement.

Proposed changes:

41:03:01:02. Leaving of property on department land. A person may not leave any property after 11:00 p.m. in a state park, recreation area, lakeside use area on public lands owned, leased, or controlled by the department or in the water adjoining such an area, or within the right-of-way of the George S. Mickelson Trail unless that person is legally camped, lodged, or fishing or the property is located in a leased space designated for the specified use of that property. A person may not park or leave any vessels, fish houses, camping equipment, house trailers, or any other property for more than five days on other lands owned or leased, leased, or controlled by the department without written permission from an authorized representative of the department.

The provisions of this section do not apply to legal legally placed tree stands, elevated platforms, portable blinds, trail cameras, or trapping equipment.

41:03:01:19. Limitation on tree stands, elevated platforms, and portable blinds. Construction or use of permanent tree stands, permanent blinds, and climbing devices is prohibited on lands owned, leased, or controlled by the department. Portable tree stands, portable blinds, and climbing devices that do not utilize nails, wire, or bolts for attachment are allowed from August 25 to February 15, inclusive. Portable blinds may also be used during the spring turkey season, as described in chapters 41:06:13 and 41:05:15, by licensed spring turkey hunters. One screw-in "T" may be used to stabilize a tree stand. Removable screw-in steps may be used to access a tree stand. The name and address or the year and current applicable big game license number of the owner or user must be on the exterior of an unoccupied portable blind and legible from the ground on a tree stand and legible from the ground. Other elevated platform devices that are not attached to a tree must meet the requirements of this rule for permitted dates and for labeling if left overnight or unattended.

41:03:01:36. Limitation on trail cameras. Trail cameras placed on public lands owned, leased, or controlled by the department may be attached to trees, posts, or other structures by utilizing no more than one nail, bolt, or screw. The name and address or the year and current applicable big game license number of the owner or user must be on the exterior of an unattended trail camera. A trail camera is a remotely activated device set to capture photos, video, sound, or other evidence of activity while the user is absent from the location.

DEPARTMENT RECOMMENDATION

Recommended changes from proposal: None.

SUPPORTIVE INFORMATION

Existing public land regulations do not fully address the use of some modern hunting equipment, namely ground blinds and trail cameras, which have grown increasingly popular with big game hunters. A five-day limit currently exists for leaving many types of recreational equipment and property on GFP lands. The department wishes to extend the period in which this equipment may be utilized and appropriately regulate its placement.

APPROVE MODIFY REJECT NO ACTION

Comes, Rachel

11

From: john almont <jalmo6@sio.midco.net>
Sent: Tuesday, March 22, 2016 10:01 PM
To: Comes, Rachel
Subject: Petition for Rule Change

Petition for Rule Change

First Name: john

Last Name: almont

Address: 3701 s. glendale
sioux falls, s. 57105

Phone Number: 605-351-4990

Email Address: jalmo6@sio.midco.net

Rule Identification: east and west river deer season

Describe the change you are seeking: seniors allowed to have 1 doe deer tag for west river or east river at a cost of \$10.

Explain the reason for the described change: most counties are buck only and as a senior we might not be around in 3 to 5 years with preference

RESOLUTION 16- 03

WHEREAS, Spearfish Canyon Foundation, successor in interest to Spearfish Canyon Land Trust, owns real estate (Property) described as:

Red Cross, Tarius, Claudius, Mietiades and Mark Anthony lode mining claims of Mineral Survey No. 1224, located in Section 16, Township 5 North, Range 2 East, Black Hills Meridian, Lawrence County, South Dakota, as defined and described in patent of record; and

WHEREAS, Spearfish Canyon Foundation desires to gift the Property to the South Dakota Department of Game, Fish and Parks (Department) to be used for park and recreational purposes; and

WHEREAS, the Department has evaluated and determined that the Property would be conducive for use for park and recreational purposes; and

WHEREAS, the Department is authorized to accept gifts of property for park and recreational purposes per SDCL §§ 41-2-19 and 41-2-24;

NOW, THEREFORE, BE IT RESOLVED, that the South Dakota Game, Fish and Parks Commission does hereby authorize the Department to accept the gift of the Property from Spearfish Canyon Foundation to be used for park and recreational purposes.

BE IT FURTHER RESOLVED that the South Dakota Game, Fish & Parks Commission, on behalf of the citizens of South Dakota, does hereby acknowledge and express its deepest appreciation and gratitude to the Spearfish Canyon Foundation for its generosity, and further acknowledge the benefits this gift will provide the public for park and recreational use.

Rim Area Parcels

- Property Lines

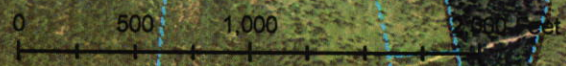
Properties

- Spearfish Canyon Foundation 34.2 Acres
- GFP - Hydro #2 GPA 33.6 Acres

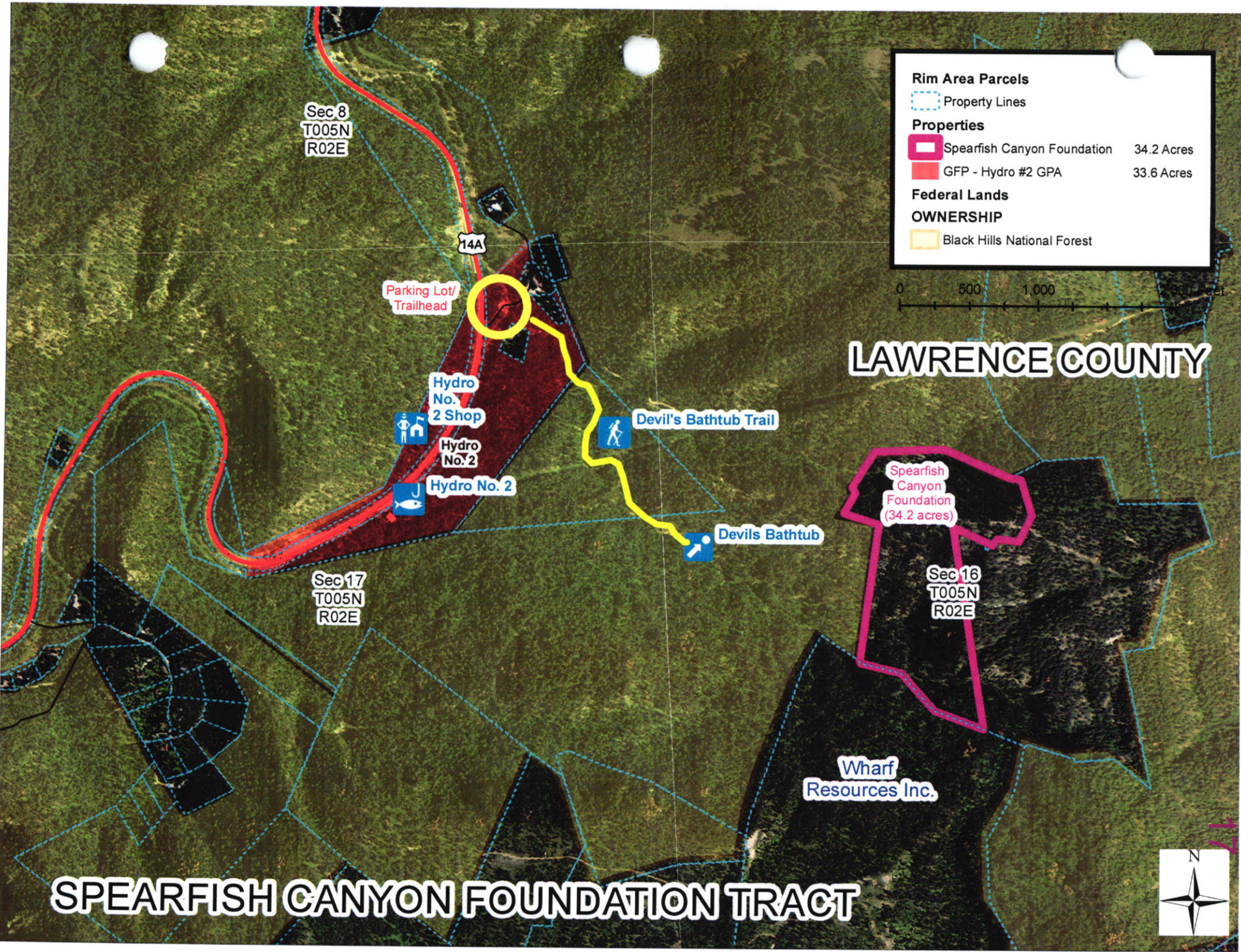
Federal Lands

OWNERSHIP

- Black Hills National Forest



LAWRENCE COUNTY



Sec 8
T005N
R02E

14A

Parking Lot/
Trailhead

Hydro
No.
2 Shop

Hydro
No. 2

Hydro No. 2

Devil's Bathtub Trail

Devils Bathtub

Sec 17
T005N
R02E

Spearfish
Canyon
Foundation
(34.2 acres)

Sec 16
T005N
R02E

Wharf
Resources Inc.

SPEARFISH CANYON FOUNDATION TRACT



January to March 2016 Revenue Comparison by Item

	2015		2016		%
	Number	Dollar	Number	Dollar	
Annual	1,713	\$ 51,375	2,231	\$ 66,944	30%
Second Vehicle	205	\$ 3,075	285	\$ 4,268	39%
Combo	2,117	\$ 95,265	2,303	\$ 103,635	9%
Transferable	205	\$ 13,325	210	\$ 13,650	2%
Daily / Person	629	\$ 2,516	605	\$ 2,420	-4%
Daily / Vehicle	1,143	\$ 6,859	1,091	\$ 6,543	-5%
Unattended Vehicle Daily	56	\$ 555	30	\$ 300	-46%
Motorcoach Permit	4	\$ 12	7	\$ 21	75%
GSM Annual Trail Pass	272	\$ 4,080	338	\$ 5,070	24%
GSM Daily Trail Pass	221	\$ 663	216	\$ 864	30%
CSP Temp Daily / Vehicle	981	\$ 14,713	1,781	\$ 35,627	142%
Bike Band	6	\$ 60	5	\$ 47	-21%
One-Day Special Event	N/A	\$ 500	N/A	\$ 625	25%
PERMITS	7,551	\$ 192,998	9,102	\$ 240,014	24%
Camping Services Permits	-	\$ 2,567,150	-	\$ 2,831,432	10%
Gift Card	-	\$ 1,610	-	\$ 3,035	89%
Picnic Reservations	-	\$ 4,295	-	\$ 600	-86%
Firewood	156	\$ 782	74	\$ 370	-53%
LODGING	156	\$ 2,573,837	74	\$ 2,835,437	10%
TOTAL	7,707	\$ 2,766,835	9,176	\$ 3,075,451	11%

17a

March 2016 YTD Revenue Comparison by District

LOCATION	2015	2016	%
Fort Sisseton	\$ 10,497	\$ 12,819	22%
Roy Lake	\$ 49,105	\$ 53,744	9%
Sica Hollow		\$ 437	
DISTRICT 1	\$ 59,602	\$ 67,000	12%
Richmond Lake	\$ 7,881	\$ 9,934	26%
Mina Lake	\$ 30,153	\$ 30,216	0%
Lake Louise	\$ 9,551	\$ 10,716	12%
Fisher Grove	\$ 2,469	\$ 3,273	33%
Amsden		\$ 35	
DISTRICT 2	\$ 50,054	\$ 54,174	8%
Sandy Shore	\$ 5,147	\$ 7,172	39%
Hartford Beach	\$ 25,241	\$ 29,331	16%
Lake Cochrane	\$ 12,575	\$ 13,547	8%
Pelican Lake	\$ 31,765	\$ 33,368	5%
Pickereel Lake	\$ 56,270	\$ 56,116	0%
DISTRICT 3	\$ 130,998	\$ 139,534	7%
Oakwood Lakes	\$ 50,494	\$ 61,005	21%
Lake Poinsett	\$ 54,922	\$ 59,137	8%
Lake Thompsor	\$ 67,986	\$ 76,115	12%
DISTRICT 4	\$ 173,402	\$ 196,258	13%
Lake Herman	\$ 38,507	\$ 43,160	12%
Walkers Point	\$ 15,007	\$ 19,920	33%
DISTRICT 5	\$ 53,514	\$ 63,079	18%
Snake Creek	\$ 77,649	\$ 90,377	16%
Platte Creek	\$ 8,341	\$ 8,504	2%
Burke Lake	\$ 240	\$ 315	31%
Buryanek	\$ 19,299	\$ 24,947	29%
DISTRICT 6	\$ 105,529	\$ 124,143	18%
Palisades	\$ 41,647	\$ 42,570	2%
Lake Vermillion	\$ 52,194	\$ 56,605	8%
Big Sioux	\$ 29,554	\$ 35,028	19%
DISTRICT 7	\$ 123,395	\$ 134,203	9%
Newton Hills	\$ 84,551	\$ 84,341	0%
Lake Alvin	\$ 930	\$ 126	-86%
Union Grove	\$ 4,406	\$ 3,536	-20%
Adams	\$ 250	\$ 1,196	378%
DISTRICT 8	\$ 90,137	\$ 89,200	-1%

LOCATION	2015	2016	%
Lewis & Clark	\$ 280,630	\$ 281,254	0%
Springfield	\$ 6,723	\$ 6,594	-2%
Chief White Crane	\$ 71,567	\$ 83,531	17%
Pierson Ranch	\$ 26,221	\$ 28,398	8%
Tabor		\$ -	
Sand Creek		\$ 24	
DISTRICT 9	\$ 385,141	\$ 399,800	4%
White Swan		\$ -	
South Scalp		\$ 23	
South Shore		\$ -	
North Point	\$ 90,415	\$ 87,278	-3%
Pease Creek	\$ 6,611	\$ 7,740	17%
Randall Creek	\$ 34,175	\$ 38,112	12%
Whetstone		\$ -	
North Wheeler		\$ -	
DISTRICT 10	\$ 131,201	\$ 133,153	1%
Farm Island	\$ 43,856	\$ 59,328	35%
West Bend	\$ 72,054	\$ 79,990	11%
DISTRICT 11	\$ 115,910	\$ 139,318	20%
Okobojo	\$ 27	\$ -	
Oahe Downstream	\$ 78,219	\$ 95,716	22%
Spring Creek	\$ 4,145	\$ 5,645	36%
Cow Creek	\$ 13,263	\$ 16,032	21%
DISTRICT 12	\$ 95,654	\$ 117,393	23%
East Whitlock		\$ -	
West Whitlock	\$ 30,316	\$ 39,375	30%
Lake Hiddenwood	\$ 123	\$ 319	160%
Swan Creek	\$ 1,814	\$ 2,357	30%
Indian Creek	\$ 41,416	\$ 52,212	26%
West Pollock	\$ 1,824	\$ 3,458	90%
WalthBay		\$ 30	
Revheim Bay		\$ 21	
DISTRICT 13	\$ 75,493	\$ 97,773	30%
Mickelson Trail	\$ 6,773	\$ 8,254	22%
Bear Butte	\$ 1,675	\$ 1,999	19%
DISTRICT 14	\$ 8,448	\$ 10,253	21%
Shadehill	\$ 70,002	\$ 85,746	22%
Llewellyn Johns	\$ 568	\$ 2,916	413%
Rocky Point	\$ 20,409	\$ 34,681	70%
DISTRICT 15	\$ 90,979	\$ 123,342	36%
Custer	\$ 901,534	\$ 975,049	8%
DISTRICT 16	\$ 901,534	\$ 975,049	8%
Angostura	\$ 96,512	\$ 116,772	21%
Sheps Canyon	\$ 19,216	\$ 23,492	22%
DISTRICT 17	\$ 115,728	\$ 140,263	21%
PIERRE OFFICE	\$ 60,116	\$ 71,517	19%
TOTAL:	\$ 2,766,835	\$ 3,075,451	11%



DEPARTMENT OF GAME, FISH, AND PARKS

Foss Building
523 East Capitol
Pierre, South Dakota 57501-3182

19

Wildlife Division Land Acquisition Priorities and Guidelines April 2016

Today

South Dakota Game Production Areas and Water Access Areas provide residents and visitors with myriad hunting and fishing opportunities, as well as places to enjoy wildlife and the beauty of the South Dakota landscape. In addition to recreation, Wildlife Division lands provide high quality habitat for hundreds of species of resident and migratory wildlife, including rare and declining species.

Private property dominates the South Dakota landscape, accounting for more than 80 percent of the state's acreage, and is important in conserving our natural resources. Every year, hundreds of thousands of hunters, anglers, trappers, and other outdoor enthusiasts enjoy the bounty of our vast natural resources - a strong testament to the high quality of land stewardship provided by South Dakota landowners.

Wildlife Division lands are an equally important part of the South Dakota landscape, as they exist exclusively for the use and enjoyment of hunters, anglers, and all citizens. Found scattered across the vast South Dakota landscape, Game Production Areas and Water Access Areas often provide a county or region with its most important and readily available hunting or fishing opportunities.

Tomorrow

This document serves to guide the Wildlife Division in its land acquisition activities over the next decade. In doing so, it sets forth and describes the Wildlife Division's land acquisition priorities and guiding principles. These priorities and guiding principles are based upon the expertise of Wildlife Division staff, and the input of Wildlife Division land users and other conservation interests who have shared their thoughts about Wildlife Division land acquisition direction over the years.

When the Wildlife Division began purchasing public hunting lands in the late 1930s, efforts were centered on obtaining Game Production Areas and Water Access Areas to provide management and recreational opportunities for individual species rather than specific habitat types. Over time the Wildlife Division shifted its land acquisition efforts to securing native habitat types that support resident and migratory wildlife species, and parcels that improve management efficiency and effectiveness, while still providing a variety of wildlife related recreational opportunities. This approach has resulted in a widely distributed Wildlife Division land inventory of high quality habitat types that is both biologically sound and publicly acceptable.

Land Acquisition Priorities

The Wildlife Division has established the following land acquisition priorities:

Additions to existing Game Production Areas and Water Access Areas

This includes:

- Parcels that improve public use on and access to existing Wildlife Division lands.
- In-holding and round-out parcels that consolidate or connect existing Wildlife Division lands or other public lands open to hunting and fishing related recreation.
- Parcels that facilitate more efficient and effective wildlife habitat management and development activities on existing Wildlife Division lands.
- Parcels that provide buffers or are necessary for maintaining or enhancing the integrity of existing Wildlife Division lands.

Lake and river access

This includes:

- Parcels providing access to public waters for fishing, boating, and hunting.
- Parcels necessary to address public access needs to newly developed fisheries.

Important habitat types, landscapes, and recreational opportunities:

This includes:

- Parcels necessary to expand existing or develop new administrative facilities.
- Parcels containing significant habitat and hunting opportunities for pheasants.
- Parcels containing significant wetland habitat complexes.
- Parcels that represent intact native prairie grassland systems.
- Parcels of undeveloped lakeshores and riparian corridors.
- Parcels associated with planned and coordinated flood mitigation buyout projects.
- Parcels that provide hunting, fishing, and related wildlife recreation opportunities near population centers.
- Parcels with containing rare, unique, or significant plant or animal species or their habitats.

Land Acquisition Guidelines

The Wildlife Division utilizes the following guidelines when conducting land acquisitions:

Regarding process, the Wildlife Division will:

- Utilize existing and long-standing land acquisition procedures, based in Wildlife Division Policy, South Dakota Administrative Rule, and South Dakota Codified Law, in acquiring property as Game Production Areas and Water Access Areas.
- Work only with willing sellers.
- Utilize a property's market value, as determined by an independent appraisal, in negotiating a purchase price.
- Ensure that property appraisals conducted on behalf of the Wildlife Division are completed by State-Certified General Appraisers and conform to Uniform Standards of Professional Appraisal Practice (USPAP) or Uniform Appraisal Standards for Federal Land Acquisitions (UASFLA) as applicable.

Regarding economics, the Wildlife Division will:

- Carefully consider the economic impacts of proposed land acquisition projects, and champion only those projects with minimal financial burdens and maximum conservation and public use benefits.
- When available as an option, evaluate the costs/benefits of leasing a property for wildlife habitat management and public access opportunities over purchasing it.
- Identify anticipated land management operation, maintenance, and development needs and their associated costs, and develop strategies for meeting these needs prior to acquiring new properties.
- Utilize financial support offered from conservation partners for acquisition and management activities, making the most efficient use of these resources as potential matching funds through grant programs such as the Wildlife and Sport Fish Restoration program.

Regarding land ownership and stewardship, the Wildlife Division will:

- Strive to be a good neighbor in communities in which it owns land, and involve communities when discussing land management issues.
- Work to identify existing Wildlife Division lands that could be considered surplus to its mission and potentially available for disposal via exchange or sale.
- Utilize carefully evaluated land exchanges above the sale of surplus lands to improve management efficiency and effectiveness in addition to ensuring overall wildlife conservation values and public use opportunities are maintained.
- Ensure compliance with all applicable state and federal laws, rules, regulations, and policies regarding disposal of Wildlife Division lands.
- Only consider accepting land donations that serve its mission, meet or exceed standards for state ownership, and do not impose significant management, liability, or financial concerns on the Wildlife Division.

South Dakota Department of Game, Fish & Parks - Wildlife Division
Land Acquisition and Disposal Report
April 2016

Action Items

None

Information Items

None

Early Development Projects

Wetlands America Trust Addition to Swan Lake GPA

Location: Clark County

Description: 240 acres

Management Objective: Game Production Area – wildlife habitat management and public hunting access

Cost: \$511,000.00

Expected Closing: July 2016

Wetlands America Trust Addition to Odessa #1 GPA

Location: McPherson County

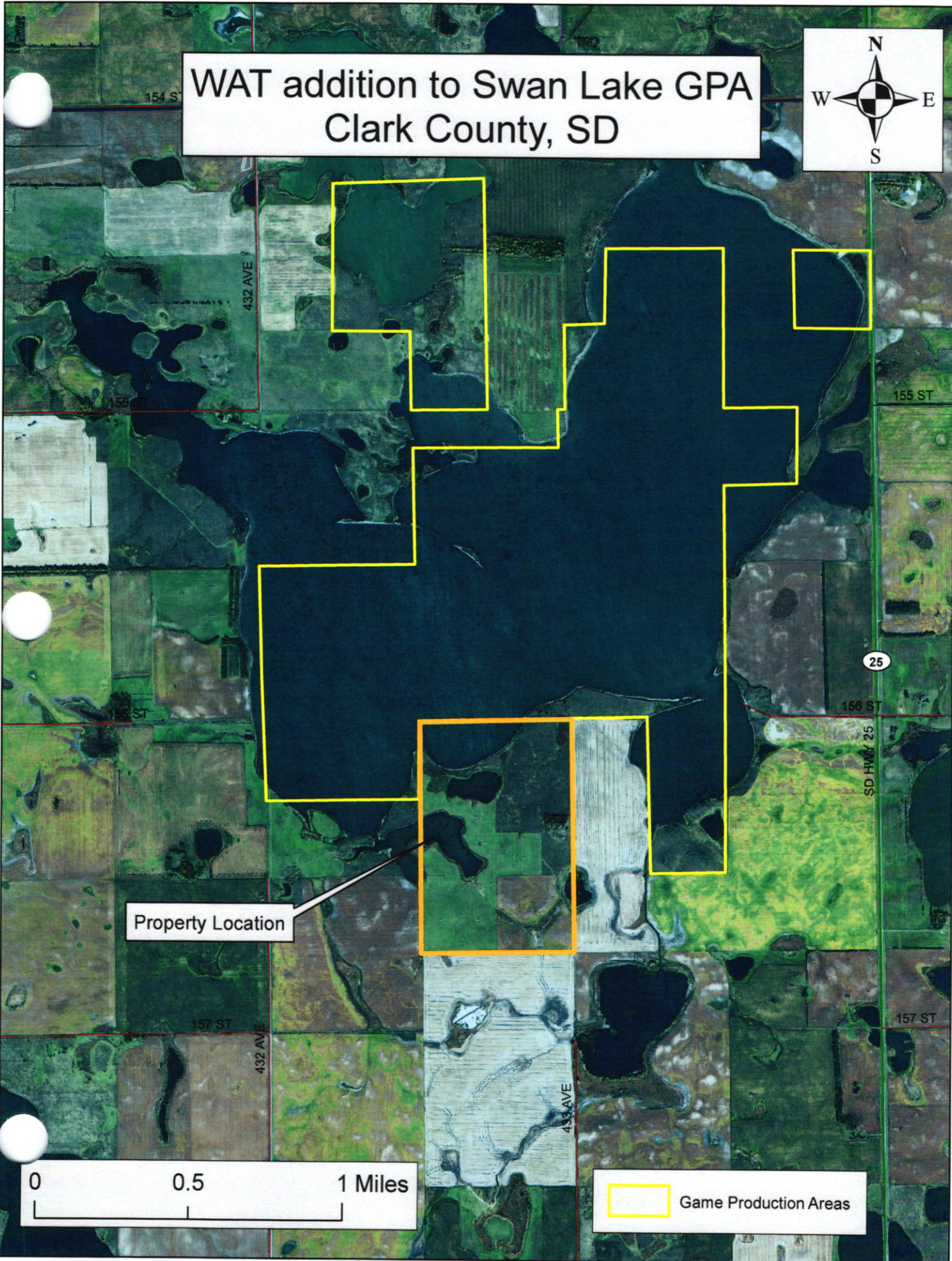
Description: 80 acres

Management Objective: Game Production Area – wildlife habitat management and public hunting access

Cost: \$84,000.00

Expected Closing: July 2016

WAT addition to Swan Lake GPA Clark County, SD

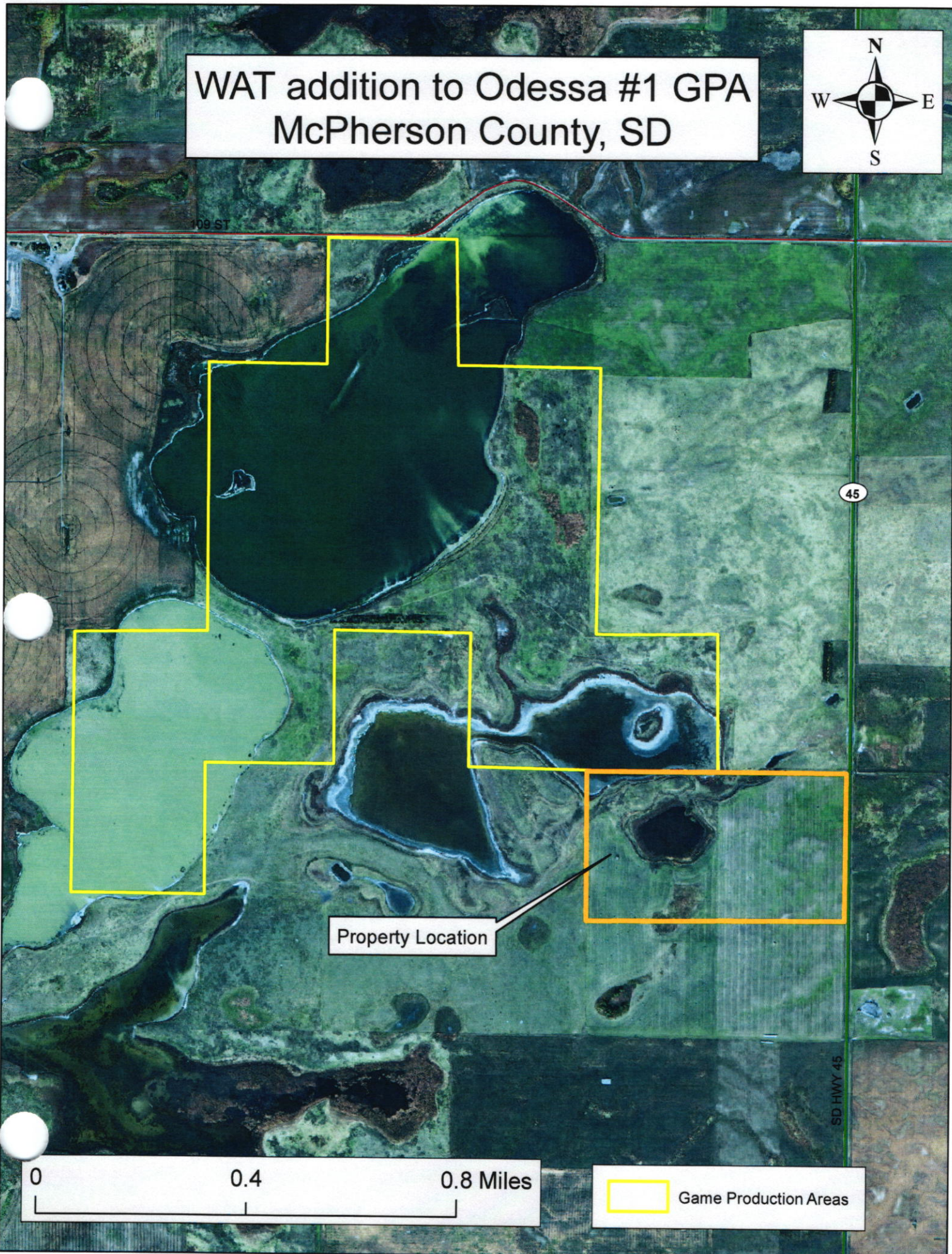


Property Location

0 0.5 1 Miles


Game Production Areas

WAT addition to Odessa #1 GPA McPherson County, SD



Property Location

0 0.4 0.8 Miles

 Game Production Areas

License Sales Totals

28

(as of April 1)

date updated: 1 April 2016

Resident	2016	2015
Combination	24,886	22,911
Junior Combination	2,267	1,980
Senior Combination	4,969	4,411
Small Game	1,288	1,293
Youth Small Game	627	658
1-Day Small Game	224	190
Migratory Bird Certificate	11,071	11,372
Predator/Varmint	1,025	795
Furbearer	1,986	2,079
Annual Fishing	16,474	15,313
Senior Fishing	4,402	3,999
1-Day Fishing	514	520
Gamefish Spearing/Archery	1,504	1,522

Nonresident	2016	2015
Small Game	2,786	2,821
Youth Small Game	209	174
Annual Shooting Preserve	71	95
5-day Shooting Preserve	558	538
1-day Shooting Preserve	299	225
Spring Light Goose	3,940	4,006
Youth Spring Light Goose	137	151
Migratory Bird Certificate	157	50
Predator/Varmint	756	704
Furbearer	2	4
Annual Fishing	9,309	8,149
Family Fishing	2,784	2,670
Youth Annual Fishing	450	302
3-Day Fishing	4,204	3,716
1-Day Fishing	2,205	1,986
Gamefish Spearing/Archery	437	364
TOTAL ON FILE =	99,541	92,998