



AGENDA - Revised

Game, Fish and Parks Commission

March 3-4, 2016

RedRossa Convention Center

808 W. Sioux Avenue, Pierre, SD

Call to order 1:00 PM CDT

Division of Administration

Action Items:

1. Approve Minutes of the January 2016 Meeting
<http://gfp.sd.gov/agency/commission/docs/2016/january-meeting-minutes.pdf>
2. Additional Commissioner Salary Days
3. License List Request

Information Items:

4. Legislative Update

2:00 PM Public Hearing

Finalizations

5. Resolutions for Allocations of Limited-draw Hunting and Paddlefish Licenses
6. Repeal of Dry Creek Waterfowl Refuge in Sully County

Proposals

7. Custer State Park Bison Hunting Season
8. Elk Hunting Season: Black Hills, Custer State Park, Archery and Prairie
9. Waterfowl Hunting Seasons
10. Minimum Standard for Hunting with Air Guns
11. Allowance for Trail Cameras on Public Land

Open Forum

Petitions for Rule Change

12. Reduction of Nonresident Waterfowl Licenses

Division of Parks and Recreation

Action Items:

13. Oahe Downstream Concession
14. Roy Lake State Park Concession

Division of Parks and Recreation (continued)

Information Items:

15. Bureau of Reclamation Cabin Lot Rent Appraisals
16. Good Earth State Park Visitor Center Film
17. Spearfish Canyon Land Donation
18. Camping Reservation Report

Division of Wildlife

Information Items:

19. Land Acquisition Guidance Document
20. Statewide Fisheries Management Plan Implementation Update
21. Missouri River Fisheries Management Plan Implementation Update
22. Elk Management Plan Implementation Update
23. Pheasant Management Plan Implementation Update
24. Results of Animal Damage Control Cooperator Survey Results
25. Enemy Swim and Stony Point Update
26. 2016 License Sales Report

Adjourn

Next meeting information:

April 7-8, 2016

McCrary Gardens

621 22nd Avenue, Brookings, SD

Minutes of the Game, Fish, and Parks Commission
January 14-15, 2016

Chairman Cooper called the meeting to order at 1:00 p.m. CDT at the RedRossa in Pierre, South Dakota. Commissioners John Cooper, Cathy Peterson, H. Paul Dennert, Barry Jensen, Gary Jensen, Russell Olson, Jim Spies and W. Scott Phillips were present. Secretary Kelly Hepler was present along with approximately 30 public, staff, and media.

DIVISION OF ADMINISTRATION

Approval of Minutes

Chairman Cooper called for any additions or corrections to the December 10-11, 2015, minutes or a motion for approval.

Motion by G. Jensen with second by Spies TO APPROVE THE MINUTES OF THE DECEMBER 10-11, 2015, MEETING. Motion carried unanimously.

Additional Commissioner Salary Days

Commissioners Dennert, B. Jensen, and Peterson requested four additional salary days each for their attendance at the Western Association of Fish and Wildlife winter conference.

Motion by Cooper with second by Phillips TO APPROVE THE ADDITIONAL SALARY DAYS AS REQUESTED. Motion carried unanimously.

The Commission welcomed newly appointed Commissioner Russell Olson.

Motioned by Peterson with second by G. Jensen TO ENTER EXECUTIVE SESSION. Motion carried unanimously.

EXECUTIVE SESSION

The Executive Session began at 1:04 PM in a private room located in the RedRossa Conference Center. Commissioners Cooper, Peterson, G. Jensen, Spies, Olson, B. Jensen, Dennert, and Phillips were present. Secretary Hepler, Attorney Neill, Doug Hofer, Al Nedved, Sean Blanchette, and Rachel Comes were present. Contracts were discussed with the Commission. Concluded 1:21 PM

Motioned by B. Jensen with second by Spies TO CONCLUDE EXECUTIVE SESSION. Motion carried unanimously.

Election of Officers

Motion by G. Jensen with second by Dennert TO NOMINATE PETERSON AS CHAIR. Motion carried unanimously.

Motion by G. Jensen with second by Peterson TO NOMINATE B. JENSEN AS VICE CHAIR. Motion carried unanimously.

License List Requests

Chris Petersen, Administration Division Director presented a license list request for Turkey archery and firearm from the Lake County Longbeards chapter of the National Wild Turkey Federation to be used to invite interested parties to their inaugural banquet to be held February 26, 2016.

Motion by Cooper with second by Phillips TO APPROVE THE LICENSE LIST REQUEST. (Olson abstained) Motion carried.

GFP-Sponsored Legislation for 2016 Legislative Session

Secretary Hepler provided the Commission with an overview of GFP sponsored legislation. Hepler indicated the the Department will be sponsoring two bills for the 2016 Legislative Session. One will clarify GFP Commission authority to authorize the Department to make capital improvements on all lands leased by the department. The other repeals obsolete or unnecessary statues concerning game preserves and refuges.

PROPOSALS

Resolutions for allocations of limited-draw hunting and paddlefish licenses

Deputy Director Tom Kirschenmann presented a proposal of a new rule that would allow the Commission to allocate restricted licenses and access permits for deer, antelope, turkey, elk, mountain goat, bighorn sheep, mountain lion, bison, goose, swan and paddlefish by resolution. Kirschenmann further explained how this rule would reduce the overall pages of administrative rules by eliminating license types and numbers for each unit description within each specific rule. This new approach would not however eliminate the public input process as a public notice will be published and the Commission would still take public comment prior to adopting resolutions.

Motioned by G. Jensen with second by Cooper TO PROPOSE CHANGES TO THE APPLICATION FOR LICENSE AND PADDLEFISH LICESES AS PRESENTED. Motion carried unanimously.

Repeal of Dry Creek Waterfowl Refuge in Sully County

Kirschenmann and Regional Supervisor Cliff Stone presented the information received from Chris Hesla, Executive Director of the South Dakota Wildlife Federation (Appendix C) and the 2015-2016 waterfowl hunting access map for Lower Oahe.

Stone explained the proposal to remove the Dry Creek State Waterfowl Refuge by noting each of the three recommendations outlined in the letter received from the South Dakota Wildlife Federation. The first is to remove the Dry and Plum Creek waterfowl refuges as there is no longer landowner participation. Second reinstate the original Okoboji Creek Waterfowl Refuge boundaries as water levels have increase.

The final recommendation is to return to the plan to have walk-in strips located on GFP land within the Mail Shack Creek area. It was discussed that once the land comes out of refuge individuals can access the area by boat and hunt the shoreline.

Kirschenmann and Stone presented the Department recommendation to remove the Dry Creek State Waterfowl Refuge based on the fact a key landowner has pulled out of the Lower Oahe Waterfowl Access program and within that landowner contract was the contingency of having this refuge in place. Stone also described to the Commission that staff will be further evaluating other refuges on the Missouri River system and obtaining public input over the next year.

Motioned by Dennert with second by Phillips TO PROPOSE CHANGE TO REMOVE THE DRY CREEK STATE WATERFOWL REFUGE AS RECOMMENDED. Motion carried unanimously.

Public Hearing

The Public Hearing began at 2:00 PM and concluded at 2:05 PM. Minutes of the Public Hearing will follow the regular commission minutes.

FINALIZATIONS

Authorization for Terminally Ill Persons to Hunt

Director Tony Leif provided information on the request from Verne Boer and the Outdoor Adventure Organization that would allow for terminally ill residents to hunt deer, antelope and turkey through a onetime authorization granted by the Department. Leif further explained the differences which determine the qualifications for the authorizations surrounding the age criteria outlined in the administrative rule. He also stated recipients must be a resident and are not eligible to receive multiple licenses for different species as this is a onetime license for each species and that authorizations will only be valid within established hunting seasons. Request will be submitted by field office staff to the Department Secretary who would grant the authorization based on each individuals circumstance within the guidelines provided in the administrative rule.

Commissioner B. Jensen inquired as to what specific restrictions may be waived by the Department Secretary.

Leif clarified the restrictions to be considerations such as physical limitations to help facility and not to season structures.

Commissioner Phillips noted the three public comments against the proposal asking if this opens the door for multiple other special requests. He noted terminally ill do need consideration but there should be discussion as to what should be done for future special requests.

Commissioner Leif stated the concern on comments received was possible limitations for applicants. And because the Department only expects a limited number

of terminally ill authorization requests this should not affect the number of license allocations.

B. Jensen asked what special provisions are already in place.

Commissioner Leif responded with the allowance to shoot from motor vehicle for those with disabilities that do not allow them to exit the vehicle, special licenses for disabled vets and people with total disabilities to purchase licenses at discounted rates, and a designated shooter allowance for the visually impaired.

Commissioner Spies inquired how often the rule would be reviewed.

Leif indicate that upon adoption the Department will annually provide a report to the Commission noting applicant statistics and types of license and success rate. If requests are much more than expected future commission would have the ability to modify or repeal the rule.

Motioned by G. Jensen with second by Dennert TO APPROVE THE CREATION OF A NEW RULE AUTHORIZING TERMINALLY ILL PERSONS TO HUNT. Motion carried unanimously.

OPEN FORUM

Chairwoman Peterson opened the floor for discussion from those in attendance on matters of importance to them that may not be on the agenda and no one came forward.

DIVISION OF PARKS AND RECREATION

Spearfish Falls Acquisition

Director Doug Hofer provided an update on the Spearfish Falls acquisition and proposed Spearfish Canyon State Park. Hofer explained the approved purchase of property that includes Spearfish Falls and the current issues due to current litigation as well as a solution to move forward. The solution is to issue a revised purchase agreement closing on the 73.3 acre parcel for \$750,000 which excludes 3/10 of an acre of land and the steel bridge. The Department would then be able to move forward on a trail improvement plan excluding the easement and bridge. Once the litigation concludes the Department can acquire the remainder of land for \$50,000. Hofer noted this would become the second largest state park in South Dakota.

Commissioner Phillips inquired if the land to be traded had been identified and if so how many acres

Hofer responded the trade land will be isolated tracks within holdings of US Forest Service lands. Hofer stated the details will ultimately come from legislation, but it should be close to an acre for acre trade.

Motioned by Cooper, seconded by Spies TO APPROVE RESOLUTION 16-01 (Appendix A) AUTHORIZING GFP TO CONSUMMATE AN AMENDED PURCHASE AGREEMENT WITH SPEARFISH CANYON FOUNDATION. Motion carried unanimously.

Roy Lake Concession

Sean Blanchette, concessions manager provided background on the concession noting facilities and services available at Roy Lake. Also provided was a request from resort owner Jan Pitzl to reissue a new prospectus for sale of the resort. Blanchette noted the only change from the prospectus presented at the November Commission meeting would be to extend the offering for another 45 day period allowing interested parties time to submit proposals.

Motioned by Spies with second by Olson TO AUTHORIZE THE DEPARTMENT TO ISSUE AND ADVERTISE A PROSPECTUS FOR THE SALE OF ROY LAKE. Motion carried unanimously.

Oahe Marina Concession

Blanchette provided background on the concession at Oahe Marina and Downstream noting facilities and services available as well as details on the current lease set to expire in 2041. As no bids were received from the last prospectus Blanchette presented a request from resort owner Steve Rounds to reissue a new prospectus for sale of the resort. He noted that no changes were made from the prospectus presented at the November Commission meeting except to extend the offering for another 45 day period allowing interested parties item to submit proposals.

Motioned by B. Jensen with second by Phillips. TO AUTHORIZE THE DEPARTMENT TO ISSUE AND ADVERTISE A PROSPECTUS FOR THE SALE OF OAHE MARINA. (Olson abstained) Motion carried.

Good Earth State Park Development Update

Assistant Director Al Nedved provided a powerpoint presentation on development at Good Earth State Park noting construction began late October. Nedved stated a bid was accepted for the visitor's center with hopes to have construction begin late January. The first phase of the project than included rough construction of the entrance road, parking lot, and visitor center site work was conducted in December allowing for future construction access to the site.

Nedved mentioned interpretive planning is also taking place at this time. The Department has a contract with Split Rock Studios for a design which will give visitors a feel of what the site was like 500 plus years ago. This will allow visitors to experience the activities, trade, culture and spiritually of the past. Consultation is also taking place with descendant tribes regarding the interpretive planning for both the Visitor Center and the film that will be featured in order to provide a historically and culturally accurate message.

Custer State Park Visitor Center and Resort Improvements Construction Update

Nedved provided an update on the improvements and construction at Custer State Park visitor's center and resort. He indicated work to be done at the visitor center is schedule to be completed by spring of 2016. The projects provided by the 2015 bonding projects totaling \$11M are underway as well. The main architectural building projects at the resorts are schedule to be completed by early summer of 2016, with the remaining infrastructure and renovation projects completed by the spring of 2017.

Hofer noted the land acquisition and money raised was a partnership between the Parks and Wildlife Foundation and the Department to be approximately at 15 million dollar project.

A short preview of the Custer State Park visitor center film was shown.

Concessions Review

Blanchette provided a brief background of 6 concessions including Lewis and Clark Marina, Lewis and Clark Resort, Spring Creek Resort, Oahe Marina, Dock 44 and Roy Lake Resort. He informed the Commission that the Division is conducting a comprehensive review of these 6 concession operations to achieve best possible business model scenario that will be economically beneficial to the operator and the Department. This will also allow the Department to preserve and steward assets that are critical to visitor experience and ultimately maintain the highest level of visitor services. To complete this review the Department has contracted with CHM Government Services a leader on aiding private and public partnerships who Parks staff have partnered with in the past. Staff are currently compiling information and analysis will begin February 1st. The final memo and executive summary will be completed in April with the final draft to be ready by May or June.

Commissioner Spies stated seasonal businesses are a challenge and restaurants are also difficult. He also asked about concession liquor license and restrictions as they can be difficult to obtain as well as expensive.

Blanchette responded that all visitor services are subject to Commission approval through lease approvals. Settlement agreements will ensure these licenses are offered to the next operator as long as they meet the requirement and want the license.

Land and Water Conservation Funds

Hofer provided information on the land and water conservation funding source for grant program that provides 50 percent match grants for state and local parks. He explained that at this time the program authorization has expired, but it was decided to do a 3 year fix restarting the program with a one year appropriation.

Revenue, Camping and Visitation reports

Hofer provided the year to date comparison of state park system revenue, camping and visitation. Revenue was up 11% due to increase park entrance license sales and a 9 percent increase in camping units served over 2014. This includes

10,000 more camping units this fall than fall 2014 due largely to promotion of late season camping opportunities, use by hunters and favorable weather. Overall visitation was up by 4 percent concluding a record year.

DIVISION OF WILDLIFE

Big Sioux Lake Access Site in Moody County

Paul Coughlin, habitat program administrator provided a request to acquire the Big Sioux Lake access site in Moody County from SD Department of Transportation allowing GFP the opportunity to develop the area for public usage

Commissioner Olson inquired about additional costs.

Coughlin noted costs would be associated with the installation of a ramp and parking lot development which would include signage, gravel, and spraying of weeds.

Motion by Spies with second by Dennert TO ADOPT RESOLUTION 16-2 (Appendix B) AUTHORIZING AND CONFIRMING THE PURCHASE OF 3.5 ACRES IN MOODY COUNTY.

Land Acquisition Guidance Document Update

Coughlin provided the current land acquisition and disposal report to the Commission. He noted the guidance documents have been distributed to staff for review and suggestions. Recommendations received thus far include an emphasis on land with opportunities for habitat and hunting per the public's request. Coughlin will provide the document and a presentation at the next meeting.

Management Plan Report Schedule for 2016

Kirschenmann presented the Commission with the management plan update schedule for the 2016. He stated the schedule will aid the division in providing progress reports and updates to the Commission as well as providing hunting season date to the public sooner per their request. Kirschenmann also noted the schedule indicates the multi-year schedule approach which will eventually eliminate the need to bring hunting season date to the Commission each January.

DNA Marker Sample of Mountain Lions

Senior biologist Andy Lindbloom presented information on trend indicators, methods used to collect data, specifically biopsy darts, sampling areas, and the 56 samples collected in 2015. Lindbloom noted how this data is used to assess the trends of the population and to bring recommendations for proposals to the Commission.

Commissioners Cooper and Spies requested a briefing sheet that would highlight the work that has been done in the last 20 years. They would like this information to be accessible via the GFP website and distributed during the season.

Winter Lake Access Program Update

Rhet Russell, wildlife biologist and Dan Sternhagen, district park supervisor provided an update on the winter lake access program including information on resources used, access challenges, and ice fishing opportunities and changes. They stated there are 109 access locations statewide and provided a breakdown by region. Russell noted future plans and needs include adjusting service areas to meet angler needs, maximizing partnerships to create access as needed and to promote winter access and ice fishing as they try to provide as much access as possible for anglers.

Buck Deer Radio Collaring Update

Lindbloom provided the Commission with buck deer research updates noting the study objective to annually estimate survival and mortality rates of adult and neonate white-tailed deer and mule deer in designated data analysis units across South Dakota. Utilization of this data will provide for better allocation of buck licenses.

Radio-collaring was also explained by Lindbloom. He stated collar designs were problematic and that they tested multiple designs. Eventually GFP staff worked with manufacture to modify current expandable collar to allow the material to stretch as the deers neck swells during rut.

Lindbloom also provided survival rate and collar statistics per county surveyed. GFP will further modify collar designs with lesser tension strengths and will also utilize ear tag transmitters in 2016. Staff will recapture deer with current collars and will either replace collar or use ear tag transmitter.

Year-end License Sales Summary

Simpson provided the licensed sales report as of January 4, 2016 for resident and nonresidents for all license types. Also presented were resident and nonresident license sales by license types for 2005 – 2015. Simpson noted the trend of decreased youth license purchases. The education plan is to encourage youth hunting by working with partners and inspiring parents to take their children.

Commissioner Peterson noted the decline in youth hunters was discussed at the recent WAFWA conference and is a concern among many states. And the direction is to work with not only youth, but their parents as well to do these activities as a family.

DOW Distinguished Achievement Award

Leif presented to Jordan Kitts, grant and loan specialist with the Division of Wildlife Distinguished Achievement Award in recognition of achievements for wildlife resources and to the citizens of South Dakota.

Pactola Basin Project Update

John Carreiro, wildlife biologist provided an update on the Rapid Creek habitat restoration plan. Carrerio stated it contains 10 site locations which utilize the addition of rocks and logs creating natural structures that will keep the banks from eroding. Carrerio further explained how they utilized boulders used during the dam reconstruction to create pocket waters in the area below Canyon Lake.

WAFWA Commissioner Report

Commissioner Dennert provided the group a brief report on the WAFWA winter conference. Notable items presented at the conference were youth Commissioners or youth Commission, transferable landowner license, and outdoor education to urban populations

Motioned by Dennert with second by Cooper TO ADJOURN THE MEETING. Motion carried unanimously and the meeting adjourned at 10:15am

Appendix A

RESOLUTION 16-1

WHEREAS, at its regular meeting held on December 11-12, 2014, the Game, Fish and Parks Commission approved the Department's acquisition of the SPEARFISH FALLS TRACTS from Homestake Mining Company of California, which property is described as follows:

SPEARFISH FALLS TRACTS

Lot Ab-2, being a portion of Cascade Placer, M.S. 991, located in the NW/4 of Section 31, Township 5 North, Range 2 East, as shown on Plat Document No. 1998-4970 and comprising 0.28 acres, more or less, and

Lot F-2, being a portion of Little Spearfish Placer, M.S. 953, located in the NE/4 of Section 36, Township 5 North, Range 1 East, as shown on Plat Document No. 2001-6172 and comprising 0.02 acres, more or less, and

HMC Lot 2, being a portion of the Cascade Placer, M.S. 991, located in the NE/4 of Section 36, Township 5 North, Range 1 East and the NW/4 of Section 31, Township 5 North, Range 2 East, as shown on Plat Document No. 1991-1769 and comprising 6.61 acres, more or less, and

Montana Placer, M.S. 991, excluding Spearfish Canyon Lots 36 and 37, as shown on Plat Document 90-5436 and excluding Highway Right-of-Way, located in the W/2 of Section 31, Township 5 North, Range 2 East and the NE/4 of Section 6, Township 4 North, Range 2 East; and

for the sum of \$800,000.00 to be donated by Spearfish Canyon Foundation, Inc. for use within the State Park system, provided the closing of the sale of the SPEARFISH FALLS TRACTS was to be finalized on a date and place to be mutually agreed upon by the parties, i.e., Homestake Mining Company of California, Spearfish Canyon Foundation, Inc. and South Dakota Department of Game, Fish and Parks, once the litigation entitled *Romano, et.al. v. Homestake Mining Company of California, et.al.*, currently pending in the Fourth Judicial Circuit, Lawrence County, South Dakota, ("Lawrence County litigation") had been resolved; and

WHEREAS, the parties now desire to close the purchase of the SPEARFISH FALLS TRACTS except for that portion of the SPEARFISH FALLS TRACTS directly impacted by the Lawrence County litigation (the "portion impacted by the Lawrence County litigation"), at a price of \$750,000.00 to be paid to Homestake Mining Company by the Spearfish Canyon Foundation, with the Department agreeing to purchase and close on the portion impacted by the Lawrence County litigation at a price of \$50,000.00 after the Lawrence County litigation has been finally resolved; and

WHEREAS, the Commission is satisfied that it is in the best interests of the public to proceed with closing the transaction in the manner being proposed by the parties;

NOW, THEREFORE, BE IT RESOLVED, that GFP is authorized to execute and consummate an amended purchase agreement with Spearfish Canyon Foundation, Inc. and Homestake Mining Company of California, which is acceptable to GFP to acquire the SPEARFISH FALLS TRACTS, except that portion thereof directly impacted by the Lawrence County litigation, at a price of \$750,000.00 to be paid by Spearfish Canyon Foundation for use within the State Park system and, in addition, to acquire the portion impacted by the Lawrence County litigation at a price of \$50,000.00 to be paid to Homestake Mining Company in a manner to be mutually agreed upon by the Department and Spearfish Canyon Foundation after the Lawrence County litigation has been finally resolved.

Appendix B

RESOLUTION 16-2

WHEREAS, the Department of Game, Fish, and Parks (GFP) has expressed an interest in acquiring real property presently owned by the State of South Dakota – Department of Transportation, 700 E. Broadway Ave., Pierre, SD 57501, which property is described as:

Lot X in Outlot B of the Northeast Quarter (NE¼) of Section Twenty-nine (29) in Township One Hundred Seven (107) North, Range Forty-eight (48) West of the 5th P.M., Moody County, SD, containing 3.5 acres, more or less, and hereafter referred to as DOT PROPERTY; and

WHEREAS, said property is to be acquired by and utilized by GFP as a Water Access Area; and

WHEREAS, SDCL 41-4-1.1 requires that before GFP acquires and purchases property, GFP must notify owners of land located adjacent to the property sought to be acquired by publishing notice of the same once in each legal newspaper of the county in which the property to be purchased is located; and

WHEREAS, GFP has published the required legal notice at least thirty (30) days prior to the date of action by the Commission authorizing the intended purchases, which notice included the time and location of the meeting at which Commission action is expected and by giving notice of instructions for presenting oral and written comments to the Commission; and

WHEREAS, the Commission has reviewed any and all comments that may have been received relative to the intended purchase and after consideration of the same, the Commission approves the purchase of said property for use as a Water Access Area;

NOW, THEREFORE, BE IT RESOLVED, that GFP is authorized to complete negotiations for the purchase of the DOT PROPERTY and execute and consummate an agreement with State of South Dakota – Department of Transportation, which is acceptable to GFP to acquire by purchase, at the price of \$10,000.00, the DOT PROPERTY for use as a Water Access Area.

Appendix C

Presented during open Mic. To GFP, Dec. 10, 2015

Many of you know and remember 15 years or so ago when SDWF supported more non-res waterfowl licenses to be used for private land in Central SD. I and SDWF was very important to the passing of these licenses, since then some have been transferred to the NE and so on.

But during those negotiations the Lower Oahe Waterfowl hunting access was designed. Since then what was known as the Sheehan farm now has I think about 25 different hunting areas that you have to show up draw numbers and the GFP even has trailers of decoys that sportsmen/women can use for a day of hunting. This area was and still is very popular, other landowners at the same time pledged access to get certain things ie. (Refuges).

Late this summer a one of the major landowners pulled out of the walk-in plan, his land would be in the Mail Shack area on Lake Oahe. There were waterfowl refuges created at the beginning to secure this landowners participation in the walk in plan. They were Plum and Dry creeks which are the first 2 bays just north of Okoboji creek and very easily accessible to waterfowl hunts on the water by boat. These refuges restrict the public from access for on the water waterfowl hunting and some pass shooting opportunities, these are only accessible by boat.

There are not many of the people who worked on this issue still around, we believe is is an important issue and ask you and the staff to consider;

1. Do away with Dry and Plum Creek waterfowl refuges; these were created for landowner participation in the walk-in area. Of which they chose to no longer participate in.
2. Okoboji Creek waterfowl area was expanded due to low water levels on Lake Oahe that we no longer have, and ask you to go back to original boundary, of which is about a mile less of area, and includes some very good land to water hunt on.
3. Resurrect the old GFP plan on for walk-in in strips to be located on GFP lands (at the time of this idea,

the Corp of Engineers still owned the land) that now are in Mail Shack Creek and are in front of private land that had been leased to provide public walk in access to the bay and waterfowl hunting I believe that the Waterfowl refuge in Mail Shack is a take line refuge meaning no waterfowl hunting can occur over the water or on the take line (public land).

These are just suggestions to you. SDWF does believe it is time to look at changing some of these issues due to the fact private landowners are not doing what they said they would do in the conception of this great program, we continue to support any access we can lease from private landowners, but we also support the changing back to what we had before.

Thank You Chris Hesla
SDWF Executive Director

Public Hearing Minutes of the Game, Fish and Parks Commission
January 14, 2015

The Public Hearing Officer Scott Simpson began the public hearing at 2:00 p.m. at the RedRossa in Pierre, South Dakota with Commissioners Cooper, Peterson, Jensen, Jensen, Olson, Phillips, Dennert, and Spies present. Simpson indicated written comments were provided to the Commissioners prior to this time and will be reflected in the Public Hearing Minutes. Simpson then invited the public to come forward with oral testimony.

Authorization for Terminally Ill Persons to Hunt

No oral testimony was received.

Written testimony:

Rory Binkerd, Hartford, SD, emailed, " You've got my support on this."

Jason West, Pierre, SD, emailed, " Being Terminally Ill has nothing to do with deer management. Please focus on greater problems instead of trying to fix every special interest project that rolls along. These terminally ill tags look like just one more way to allow too many tags to roll into our already over hunted public lands. What next? Pregnant women tags? Thanks"

Gale Anderson, Pierre, SD, wrote, " As a lifelong resident and big game hunter in South Dakota I am dead against giving deer tags, antelope tags and turkey tags to terminal ill residents. It is hard enough to draw the tags as it is. The people that want this to happen are hunters. They love to hunt doesn't make any difference who pulls the trigger. If this goes through they will get to hunt more and more. I have cancer and I would not ask for a tag. I would get in the draw like everyone else. I should say a lot more, but will stop at this.

Alan Machmiller, Renner, SD, emailed, " Hi, I was in attendance in December with Vern Boer and the Outdoor Adventure Foundation. I have a couple of questions related to the proposal. Re: Application for License (Authorization for Terminally Ill Residents to hunt deer, antelope and turkey). Was it my understanding that the title actually should read something like "Application for authorization for hunting tag" rather than "application for license"? I understood there was a potential issue calling it a license as licenses must be sold or paid for? It is stated in the notice of public hearing, "The authorization would address requests based on each individual's circumstances within the guidelines provided in the new administrative rule." I am enquiring to what those guidelines will be? Or maybe better asked, have those guidelines been drafted yet?

Mike Dylla, Watertown, SD, emailed," I want to thank SDGF&P and private landowners for their commitment to making it possible for me, and my family, to harvest wild game in SD. 100% of the deer and 75% of the pheasants we harvested during the 2015 season was on privately owned land that was enrolled with SDGF&P.

West River Deer in Butte Co -- 5 hunters acquired the double whitetail tags, entitling us to 10 deer. We hunted public "walk in only" NE of Newell. We filled 7 tags in 2 1/2 days of hunting. (4 small bucks & 3 small does) All seven deer taken on SDGF&P "walk in only". Was first time any of us hunted west river & we considered it a success.

East River Deer -- we all grew up in Day Co & traditionally hunt Day Co. Only one of us qualified for 2015 Day Co deer. Two of us acquired Brown Co antlerless. One average buck harvested Day (west of Bristol), and two average does in Brown (east of Ferney). Again, all 3 east river deer harvested on SDGF&P "walk in only".

Of the ten deer harvested, one taken to a commercial locker plant for processing. We boned 9 deer, yielding 270# venison. When blended with beef (burger) and pork (smoked ring sausage and smoked snack sticks) we will have over 500# venison products for our families. Note, we hunt for the meat -- not for horns.

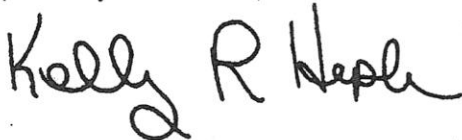
1-3-16 Pheasant -- my brother and I have tradition hunting on the final day of the season (anyone can fill on the opener, but can you fill at the last day of season?). We got 5 pheasants in 3 hrs. of hunting, combination of CREPE & "walk in only", between Andover and Groton.

The willingness of landowners to enroll in to SDGF&P programs is critical to us. I encourage SDGF&P to continue promoting the programs that enable us to enjoy the benefits of hunting.

SDGF&P must meet the economic challenges and continue/expand funding the public hunting areas -- it is doubtful that the five of us would purchase licenses, without these programs."

The public Hearing concluded at 2:05 p.m.

Respectfully Submitted,



Kelly R. Hepler, Department Secretary

GAME, FISH & PARKS

523 East Capital
Pierre, SD 57501
(605)773-4510
Fax (605)773-6245

John.Sayler@state.sd.us

3

REQUEST FOR LISTS OF LICENSE HOLDERS

Application

Type of List Requested Hunting & Fishing license purchased in 2015

Number of licenses in list States of Iowa & Nebraska

Name of Person, Entity, or Organization requesting list:
Midwest Hunting & Fishing Magazine

How would you like your list sent to you: (email or disk) Email

Email Address: paul@midwesthuntfish.com

Phone Number 605 951 5361 Paul Nester

Purpose for which list will be used:
We are running a big 30 page spread on the Missouri River system in our March issue. SD Tourism and many members of the Missouri River Tourism are wanting to reach a stronger market in Iowa and Nebraska. We want to send a complimentary copy of the magazine to our visitors from these two states.

This list is Names and Mailing Addresses ONLY

The sale of lists by the Department of Game, Fish & Parks is authorized by SDCL 1-27-1 and ARSD 41:06:02:04, 05 and 06. The fee for a Game, Fish & Parks Commission approved exception is \$100, otherwise the fee is \$100 per thousand names or a minimum of \$100 whichever is greater.

Unless requested and approved as part of this request, the license list will not include anyone under eighteen years of age. Names are for one-time use only and are to be used only by the person, entity or organization approved per this request.

Paul Nester 2/29/2016
Authorized Signature of Purchaser Date

Date of Commission Action

**GAME, FISH AND PARKS COMMISSION ACTION
FINALIZATION**

**Application for License and Paddlefish Licenses
Chapter 41:06:01 AND 41:07**

Commission Meeting Dates:	Proposal	January 14-15, 2016	Pierre
	Public Hearing	March 3, 2016	Pierre
	Finalization	March 3-4, 2016	Pierre

COMMISSION PROPOSAL

New Rules:

41:06:01:18. Authorization for the Commission to establish the allocation of limited licenses and access permits for antelope, bighorn sheep, bison, deer, elk, goose, mountain goat, mountain lion, swan, and turkey hunting licenses. If the number of hunting licenses or access permits available for allocation are limited in number for antelope, bighorn sheep, bison, deer, elk, goose, mountain goat, mountain lion, swan, and turkey hunting seasons, the Commission shall establish by resolution the number and type of each license available for lottery drawing after a notice for public hearing that conforms with notice requirements for adoption of administrative rules as provided in SDCL 1-26-4.1 is published.

41:07:01:19. Authorization for the Commission to establish the allocation of limited permits for the take of paddlefish by snagging and archery. If the number of paddlefish permits available for allocation is limited in number for snagging and archery seasons, the Commission shall establish by resolution the number and type of each license available for lottery drawing after a notice for public hearing that conforms with notice requirements for adoption of administrative rules as provided in SDCL 1-26-4.1 is published.

DEPARTMENT RECOMMENDATION

Recommended changes from proposal: No Action

SUPPORTIVE INFORMATION

As part of the guidance from the Governor's Administrative Rules Workgroup, the Department has identified another way to increase efficiency of the administrative rules process, yet maintain public notice and public comment opportunities. These new rules would allow the Commission to allocate restricted licenses and access permits for seasons described above by resolution. A major result of the approval process via resolution would be a reduction in the overall pages of administrative rules by eliminating license types and numbers for each unit description within each specific rule.

APPROVE _____ **MODIFY** _____ **REJECT** _____ **NO ACTION** _____

GAME, FISH AND PARKS COMMISSION ACTION
FINALIZATION

**Refuges
Chapter 41:05:02**

Commission Meeting Dates:	Proposal	January 14-15, 2016	Pierre
	Public Hearing	March 3, 2016	Pierre
	Finalization	March 3-4, 2016	Pierre

COMMISSION PROPOSAL

Proposed changes from last year:

1. Remove the Dry Creek State Waterfowl Refuge.

41:05:02:68. Missouri River refuges. Except as otherwise expressly provided herein, the Missouri River refuges described in subdivisions (1) to (12), inclusive, and (14) and (15), of this section are closed to all waterfowl hunting from the opening day of the earliest waterfowl season through the last day of the Canada goose season and are open to duck hunting after the last day of the Canada goose season. The Missouri River refuges described in subdivision (13) and subdivisions (16) to (22), inclusive, are closed to waterfowl hunting during all of the waterfowl seasons. The refuges, including all islands and bars within the refuges, are described as follows:

~~(9) — The Dry Creek State Waterfowl Refuge comprises an area on Lake Oahe enclosed by a line beginning at the Corps of Engineers take line on the west section line of section 23, township 113 north, range 81 west, Sully County; then northeasterly along the take line to the north-south one-half mile line of section 24, township 113 north, range 81 west, Sully County; then south along the one-half mile line to the center of the reservoir; then upstream along the center of the reservoir to a point straight south of the west section line of section 23, township 113 north, range 81 west, Sully County; then north along the section line to the point of beginning;~~

DEPARTMENT RECOMMENDATION

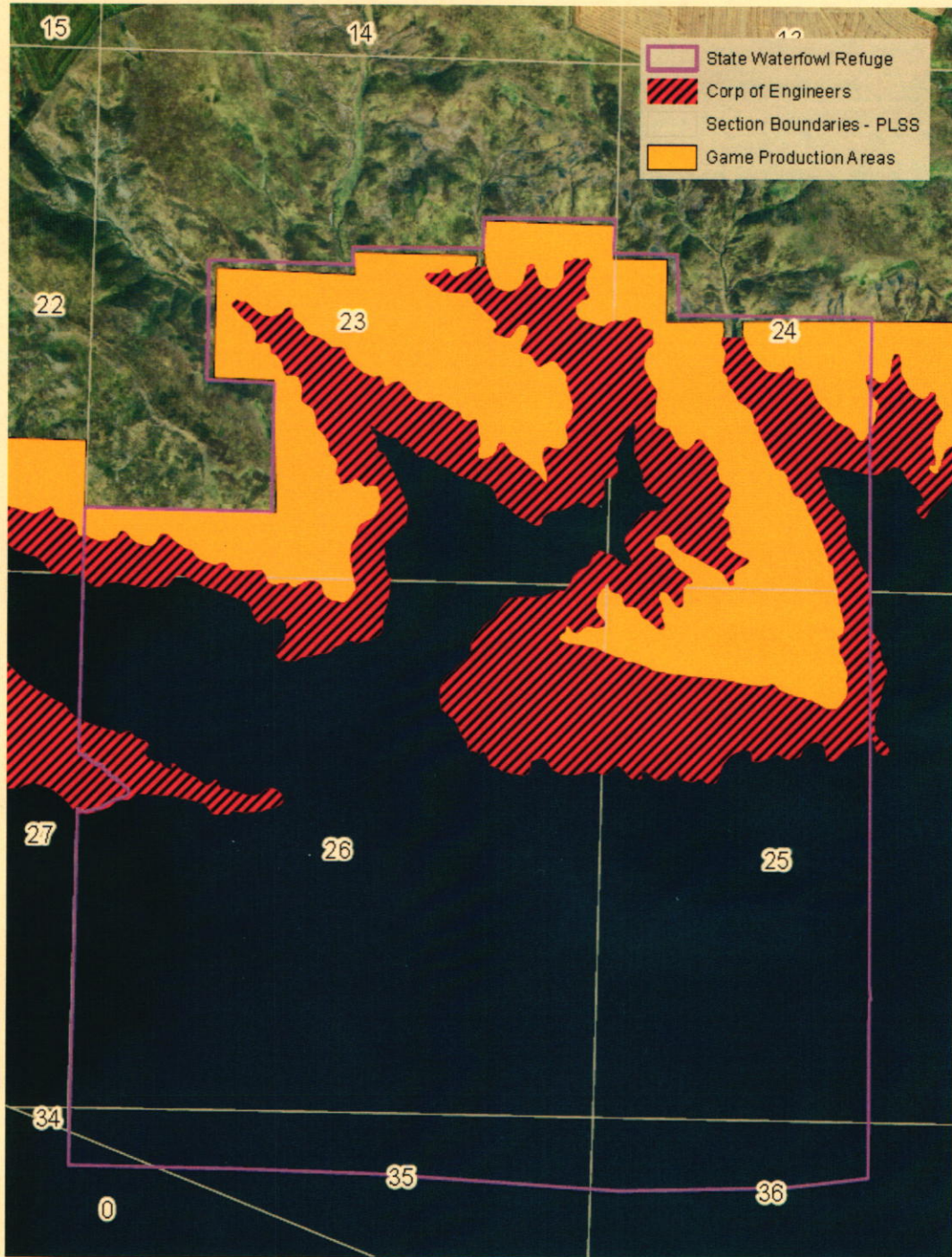
Recommended changes from proposal: None.

SUPPORTATIVE INFORMATION

Dry Creek State Waterfowl Refuge was implemented in 1999 as a contingency to the enrollment of the Mail Shack Creek/Zimmerman Walk-in/Lower Oahe Waterfowl Access Area. Additionally, when this refuge was implemented, the Sully Flats Waterfowl Refuge (just up river from the current Dry Creek State Waterfowl Refuge) was removed. The Zimmerman Walk-in/Lower Oahe Waterfowl Access Area land was removed from the access program in the fall of 2015 at the request of the landowner. Therefore, the Department is recommending the removal of this refuge status for waterfowl hunting opportunity.

APPROVE _____	MODIFY _____	REJECT _____	NO ACTION _____
---------------	--------------	--------------	-----------------

Dry Creek State Waterfowl Refuge



APPROVE _____ MODIFY _____ REJECT _____ NO ACTION _____

GAME, FISH, AND PARKS COMMISSION ACTION
PROPOSAL

Custer State Park Trophy Bison Bull Harvest
Chapter 41:06:42

Commission Meeting Dates:	Proposal	March 3-4, 2016	Pierre
	Public Hearing	April 7, 2016	Brookings
	Finalization	April 7-8, 2016	Brookings

DEPARTMENT RECOMMENDATION

Season Dates: 47 Days beginning the last Monday in November

Licenses: 8 trophy bull bison permits with 2 allocated to residents in the first draw.

Requirements and Restrictions:

- 1) The unit is open within the boundaries of Custer State Park for a 47-day period beginning the last Monday of November (Nov 28, 2016 – Jan 13, 2017).
- 2) Permit holders are restricted to three days for the harvest and must arrange hunting date with the Custer State Park Office.
- 3) Each permit holder shall be accompanied by an authorized Custer State Park official while hunting.

Recommended changes from last year: None

SUPPORTIVE INFORMATION

Custer State Park's trophy bison harvest is the tool used to remove over mature bison bulls (10+ year-old), but is a sought after trophy opportunity. These bulls are eligible for Boone and Crockett awards and most qualify above the minimums.

APPROVE _____	MODIFY _____	REJECT _____	NO ACTION _____
----------------------	---------------------	---------------------	------------------------

GAME, FISH, AND PARKS COMMISSION ACTION
PROPOSAL

Custer State Park Non-Trophy Bison Harvest
Chapter 41:06:60

Commission Meeting Dates:	Proposal	March 3-4, 2016	Pierre
	Public Hearing	April 7, 2016	Brookings
	Finalization	April 7-8, 2016	Brookings

DEPARTMENT RECOMMENDATION

Season Dates: 47 Days beginning the 2nd Monday in January.

Licenses: 15 non-trophy bull bison, 5 cow bison permits.

Requirements and Restrictions:

- 1) The unit is open within the boundaries of Custer State Park for a 47-day period beginning the 2nd Monday of January (Jan 9 – Feb 24, 2017).
- 2) Permit holders are restricted to one day for the harvest and must arrange hunting date with the Custer State Park Office.
- 3) Each permit holder shall be accompanied by an authorized Custer State Park official while hunting.
- 4) Seven non-trophy bull bison and three cow bison licenses allocated to residents in a first draw.

Recommended changes from last year: Change season dates from 47 days beginning the 4th Monday in January to 47 days beginning the 2nd Monday in January. Reduce the number of cow licenses from ten to five and reduce the number of cow licenses allocated to residents in a first draw from five to three.

SUPPORTIVE INFORMATION

Changes Custer State Park made to bison handling protocols in 2015 allowed moving the non-trophy hunts to January. Additionally, CSP will be moving the annual bison auction from a live auction to a video/internet auction in 2016. Due to these scheduling changes, we have the opportunity to move the non-trophy season 2 weeks earlier in the season. This will reduce any issues with hide condition of animals harvested near the end of the non-trophy season. Cow bison for the non-trophy season are sorted when the herd is handled and sorted for the auction in October. Cows selected for hunts are cows that are open and dry (not nursing). This prevents orphaning any retained calves and prevents us from shooting bred cows during the non-trophy season. Cows are also selected based upon intact horns and adequate body condition. A reduction in cow tags is warranted due to an inability to select sufficient cows in this classification to support 10 hunts, leading to the potential of shooting bred cows during the season. These changes will allow ample time to accommodate both the trophy hunts late November to early January and the non-trophy hunts with a reduction in late harvests slipping hair and harvesting bred cows.

APPROVE _____	MODIFY _____	REJECT _____	NO ACTION _____
----------------------	---------------------	---------------------	------------------------

GAME, FISH AND PARKS COMMISSION ACTION PROPOSAL

Black Hills Elk Hunting Season Chapter 41:06:26

Commission Meeting Dates:

Proposal	March 3-4, 2016	Pierre
Public Hearing	April 7, 2016	Brookings
Finalization	April 7-8, 2016	Brookings

DEPARTMENT RECOMMENDATION

Duration of Recommendation: 2016 and 2017 hunting seasons.

Season Dates:

	2016 Hunting Season Dates	2017 Hunting Season Dates
Any Elk Units	October 1 - 31	October 1 - 31
Antlerless Elk Units: H1B, H7B, and H9B	October 17 - 31 AND December 1 -16	October 16 - 31 AND December 1 -15
Antlerless Elk Units: H2B, H2E, H2H, H3B and H3E	October 17-31	October 16-31
Antlerless Elk Units: H2C, H2F, H2I, H3C and H3F	December 1-16	December 1-15
Antlerless Elk Units: H2D, H2G, H2J, H3D and H3G	December 17-31	December 16-31

Open Area: See attached maps.

Licenses: 443 "any elk" and 1,255 "antlerless elk" licenses (total of 1,698 licenses)

Requirements and Restrictions:

1. No person may possess more than one (1) elk license of any type in a year.
2. No more than two persons may submit applications together.
3. Except for landowner/operator preference applicants, no person who receives a license in the first drawing for this season shall be eligible to apply for a Black Hills elk license in first drawings for the next 9 years.
4. One-half of the licenses allocated in each unit are available for landowner/operator preference. One member of each qualifying landowner/operator household may apply every year.
5. Each elk harvested must be inspected by a Conservation Officer or designee within 24 hours after kill.

Recommended changes from last year:

1. Adjust the number of licenses available from 430 "any elk" and 500 "antlerless elk" licenses (total of 930 licenses) to 443 "any elk" and 1,255 "antlerless elk" licenses (total of 1,698 licenses).
2. Make adjustments to existing antlerless hunting units and create new antlerless hunting units.
3. Season dates for units H2B, H2E, H2H, H3B, and H3E would run from the Monday closest to October 15 through October 31.
4. Season dates for units H2C, H2F, H2I, H3C, and H3F would run from December 1 through the Friday closest to December 15.
5. Season dates for units H2D, H2G, H2J, H3D, and H3G would run from Saturday closest to December 15 through December 31.
6. Remove the language in administrative rule depicting the license type and number of licenses from each hunting unit.

APPROVE _____	MODIFY _____	REJECT _____	NO ACTION _____
----------------------	---------------------	---------------------	------------------------

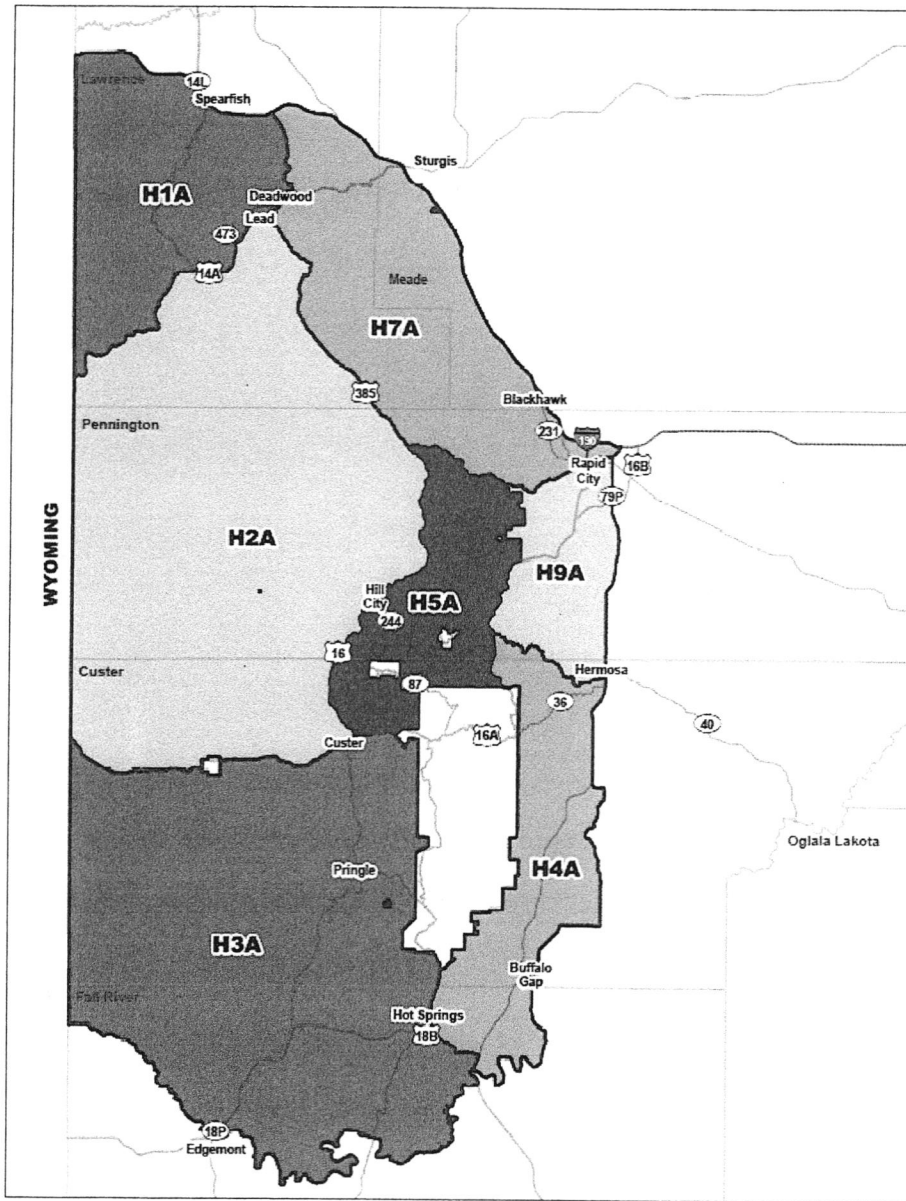
SUPPORTIVE INFORMATION

Year	Licensed Hunters	Hunter Success	Bulls Harvested	Cows Harvested
2011	866	55%	298	179
2012	570	73%	295	121
2013	620	60%	273	99
2014	664	71%	299	174
2015	922	71%	312	345

2015	"Any Elk"					"Antlerless Elk"				
Unit	Appl.1st Choice	Licensed Hunters	Harvest Success	Bulls Harvested	Cows Harvested	Appl.1st Choice	Licensed Hunters	Harvest Success	Bulls Harvested	Cows Harvested
H1	1,178	75	61%	40	4	65	40	35%	1	13
H2	8,663	249	84%	182	26	545	395	71%	12	268
H3	1,268	80	74%	52	7	85	58	42%	1	23
H4	NA	NA	NA	NA	NA	NA	NA	NA	NA	NA
H5	51	5	80%	4	0	NA	NA	NA	NA	NA
H7	248	15	100%	14	1	NA	NA	NA	NA	NA
H9	23	5	100%	5	NA	NA	NA	NA	NA	NA

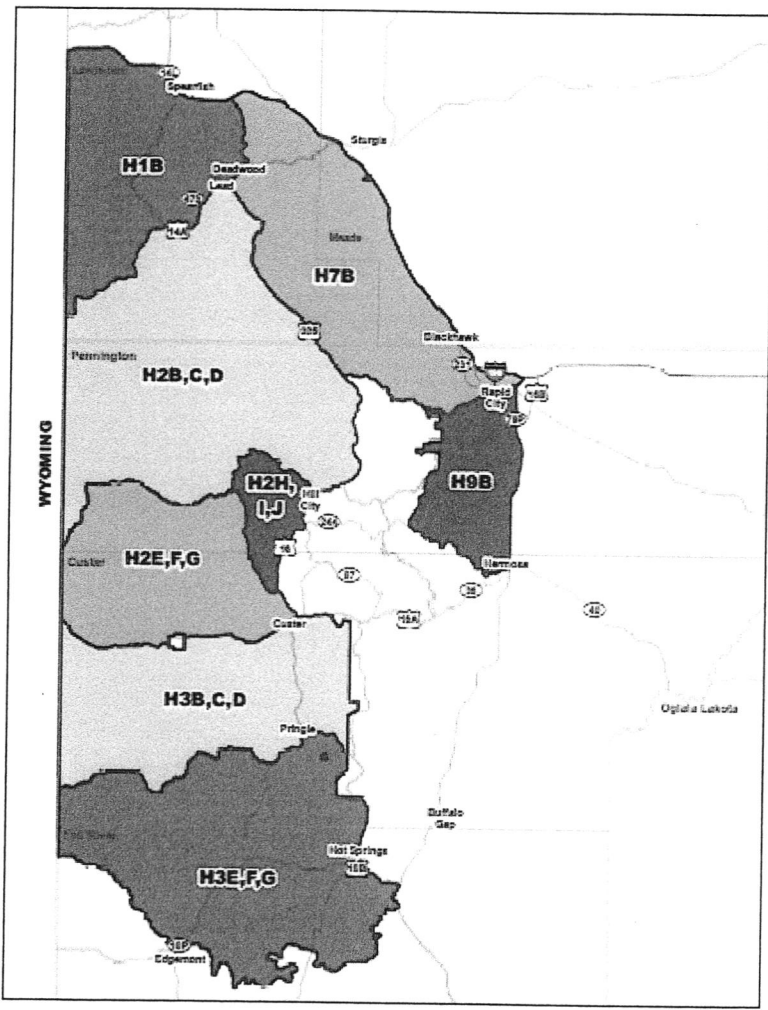
APPROVE _____ MODIFY _____ REJECT _____ NO ACTION _____

BLACK HILLS "ANY" ELK UNITS



Unit	2015	2016 & 2017
	"Any" Elk Licenses	"Any" Elk Licenses
H1A	75	75
H2A	250	250
H3A	80	80
H4A	0	8
H5A	5	5
H7A	15	20
H9A	5	5
Total	430	443

BLACK HILLS "ANTLERLESS" ELK UNITS



Unit	2015 "Antlerless" Elk Licenses	2016 & 2017 "Antlerless" Elk Licenses
H1B	40	30
H2B		200
H2C	150	150
H2D		50
H2E	250	200
H2F		200
H2G		125
H2H		25
H2I		25
H2J		25
H3B		15
H3C		15
H3D		15
H3E	60	50
H3F		50
H3G		50
H7B		20
H9B		10
TOTAL	500	1,255

**GAME, FISH AND PARKS COMMISSION ACTION
PROPOSAL**

Archery Elk Hunting Season

Chapter 41:06:43

Commission Meeting Dates:	Proposal	March 3-4, 2016	Pierre
	Public Hearing	April 7, 2016	Brookings
	Finalization	April 7-8, 2016	Brookings

DEPARTMENT RECOMMENDATION

Duration of Recommendation: 2016 and 2017 hunting seasons.

Season Dates: Black Hills Units: September 1-30, 2016
September 1-30, 2017

Open Area: See attached map

Licenses: 147 "any elk" and 140 "antlerless elk" licenses (total of 287 licenses)

Requirements and Restrictions:

1. No person may possess more than one (1) elk license of any type in a year.
2. No more than two persons may submit applications together.
3. Except for landowner/operator preference applicants, no person who receives a license in the first drawing for this season shall be eligible to apply for an archery elk license in first drawings for the next 9 years.
4. One-half of the licenses allocated in each unit are available for landowner/operator preference application. One member of each qualifying landowner/operator household may apply every year.
5. Each elk harvested must be inspected by a Conservation Officer or designee within 24 hours after kill.
6. Each unsuccessful hunter must mail the report card to the Department of Game, Fish and Parks within 10 days after the close of the season.

Recommended changes from last year:

1. Adjust the number of licenses available from 144 "any elk" and 56 "antlerless elk" licenses (total of 200 licenses) to 147 "any elk" and 140 "antlerless elk" licenses (total of 287 licenses).
2. Remove the language in administrative rule depicting the license type and number of licenses from each hunting unit.

SUPPORTIVE INFORMATION

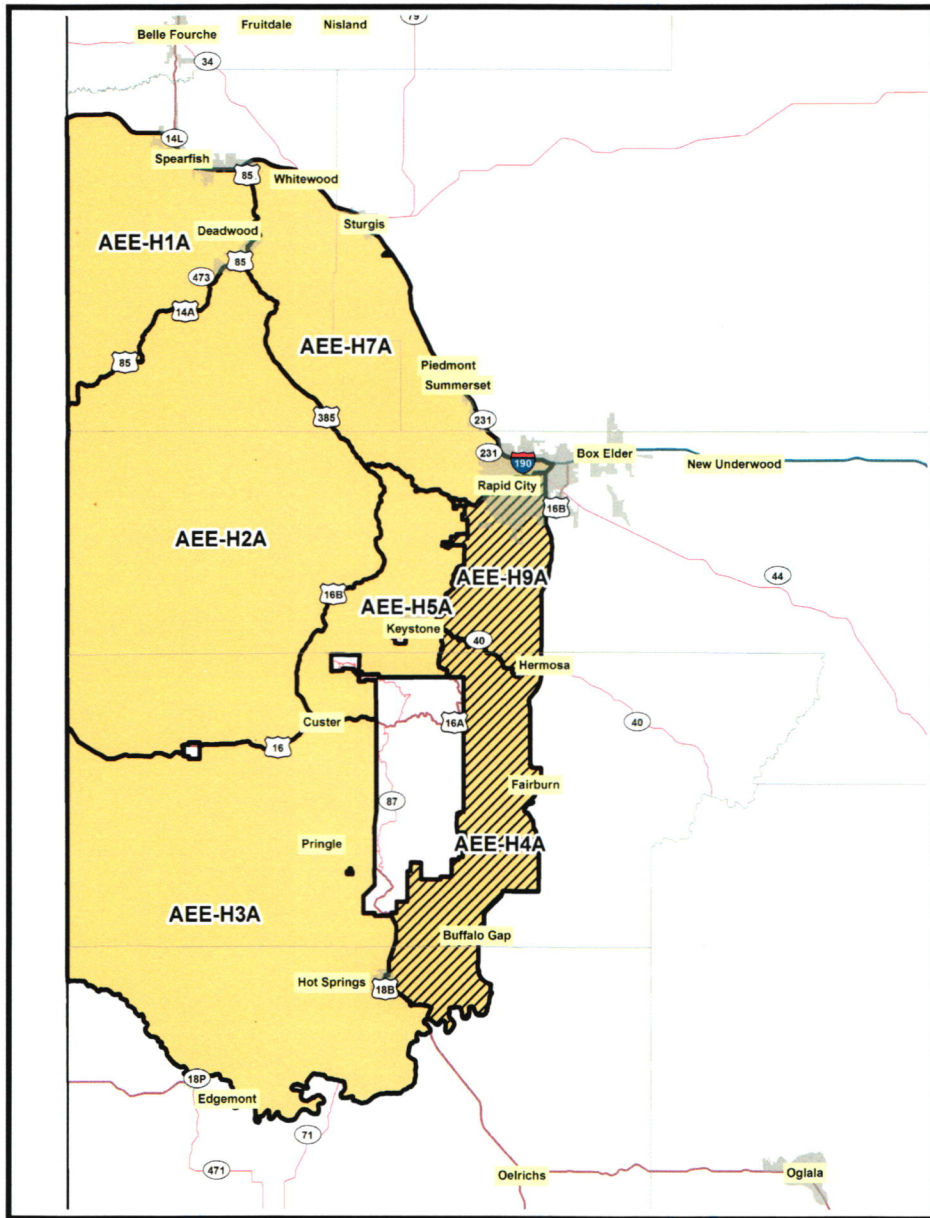
Year	Licensed Hunters	Hunter Success	Bulls Harvested	Cows Harvested
2011	126	26%	25	8
2012	97	40%	34	4
2013	107	35%	34	3
2014	106	39%	38	4
2015	196	34%	54	12

APPROVE _____ **MODIFY** _____ **REJECT** _____ **NO ACTION** _____

2015	"Any Elk"					"Antlerless Elk"				
Unit	Appl. 1st Choice	Licensed Hunters	Harvest Success	Bulls Harvested	Cows Harvested	Appl. 1st Choice	Licensed Hunters	Harvest Success	Bulls Harvested	Cows Harvested
H1	627	25	38%	8	1	10	5	20%	1	0
H2	3,473	85	44%	36	1	60	43	23%	0	10
H3	448	27	28%	8	0	4	4	0%	0	0
H4	NA	NA	NA	NA	NA	NA	NA	NA	NA	NA
H5	29	2	0%	0	0	NA	NA	NA	NA	NA
H7	110	5	33%	2	0	NA	NA	NA	NA	NA
H9	NA	NA	NA	NA	NA	NA	NA	NA	NA	NA

APPROVE _____ MODIFY _____ REJECT _____ NO ACTION _____

BLACK HILLS ARCHERY ELK UNITS



Unit	2015			2016 & 2017		
	"Any" Elk Tags	"Antlerless" Elk Tags	Total Tags	"Any" Elk Tags	"Antlerless" Elk Tags	Total Tags
H1	25	5	30	25	10	35
H2	85	44	129	90	115	165
H3	27	7	34	25	10	35
H4	0	0	0	0	0	0
H5	2	0	2	2	0	2
H7	5	0	5	5	5	10
H9	0	0	0	0	0	0
TOTAL	144	56	200	147	140	287

**GAME, FISH AND PARKS COMMISSION ACTION
PROPOSAL**

Prairie Elk Hunting Season

Chapter 41:06:59

Commission Meeting Dates:	Proposal	March 3-4, 2016	Pierre
	Public Hearing	April 7, 2016	Brookings
	Finalization	April 7-8, 2016	Brookings

DEPARTMENT RECOMMENDATION

Duration of Recommendation: 2016 and 2017 hunting seasons.

Season Dates:

Unit	2016 Hunting Season Dates	2017 Hunting Season Dates
9A	September 15 - October 31 AND December 1 - 31	September 15 - October 31 AND December 1 - 31
11A	July 15 - August 31	July 15 - August 31
11B	September 1 - October 14	September 1 - October 20
11C	October 15 - November 30	October 14 - November 30
11D	September 1 - December 31	September 1 - December 31
15A	September 1 - October 31 AND December 1 -31	September 1 - October 31 AND December 1 -31
27A	October 1 - 31 AND December 1 -31	October 1 - 31 AND December 1 -31
30A	CLOSED	CLOSED

Open Area:

Unit 09A	Portions of Butte, Lawrence and Meade counties
Unit 11A,B,C,D	Bennett County; portions of Jackson and Mellette counties
Unit 15A	Portions of Butte County
Unit 27A	Portions of Fall River County
Unit 30A	Portions of Gregory County

Licenses:

Unit 09A	10 "any elk" and 40 "antlerless elk" licenses
Unit 11A,B,C,D	24 "any elk" and 30 "antlerless elk" licenses
Unit 15A	10 "any elk" and 10 "antlerless elk" licenses
Unit 27A	15 "any elk" and 10 "antlerless elk" licenses
Unit 30A	No licenses.

Requirements and Restrictions:

- No person may possess more than one (1) elk license of any type in a year.
- No more than two persons may submit applications together.
- Except for landowner/operator preference applicants, no person who receives a license in the first drawing for this season shall be eligible to apply for a prairie elk license in first drawings for the next 9 years.
- One-half of the licenses allocated in each unit are available for landowner/operator preference. One member of each qualifying landowner/operator household may apply every year.
- Each elk harvested must be inspected by a Conservation Officer or designee within 24 hours after kill.

Recommended changes from last year:

- Adjust the number of licenses available from 48 "any elk" and 50 "antlerless elk" licenses (total of 98 licenses) to 59 "any elk" and 90 "antlerless elk" licenses (total of 149 licenses).
- Add that portion of Meade County north of the existing unit boundary, east of Interstate 90, south of SD Highway 34, and west of Middle Alkali Road to Unit 9A (See attached map). The Fort Meade Bureau of Land Management South Unit would be restricted to archery hunting only.
- Change the season dates for Unit 15A from the second Saturday in September to October 31 and from December 1-31 to September 1 to October 31 and from December 1-31.
- Change the season dates for Unit 27A from September 1 to October 31 to October 1-31 and December 1-31.
- Remove the language in administrative rule depicting the license type and number of licenses from each hunting unit.

APPROVE _____ **MODIFY** _____ **REJECT** _____ **NO ACTION** _____

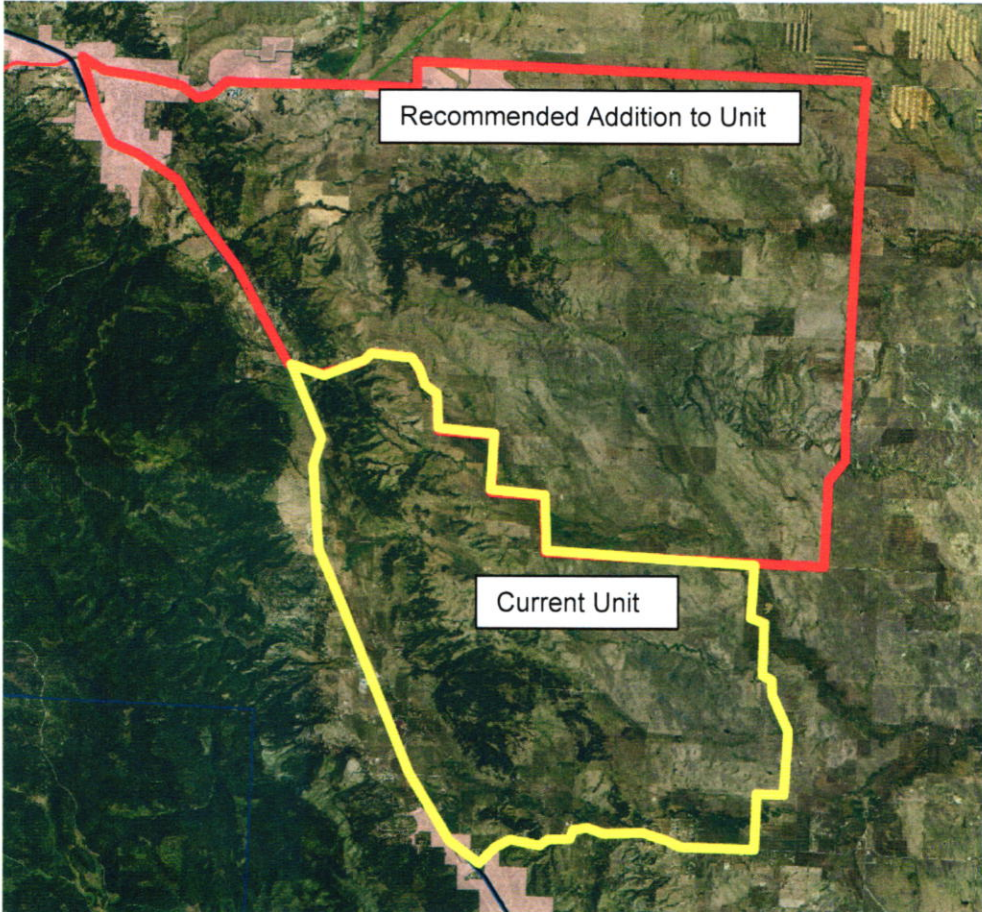
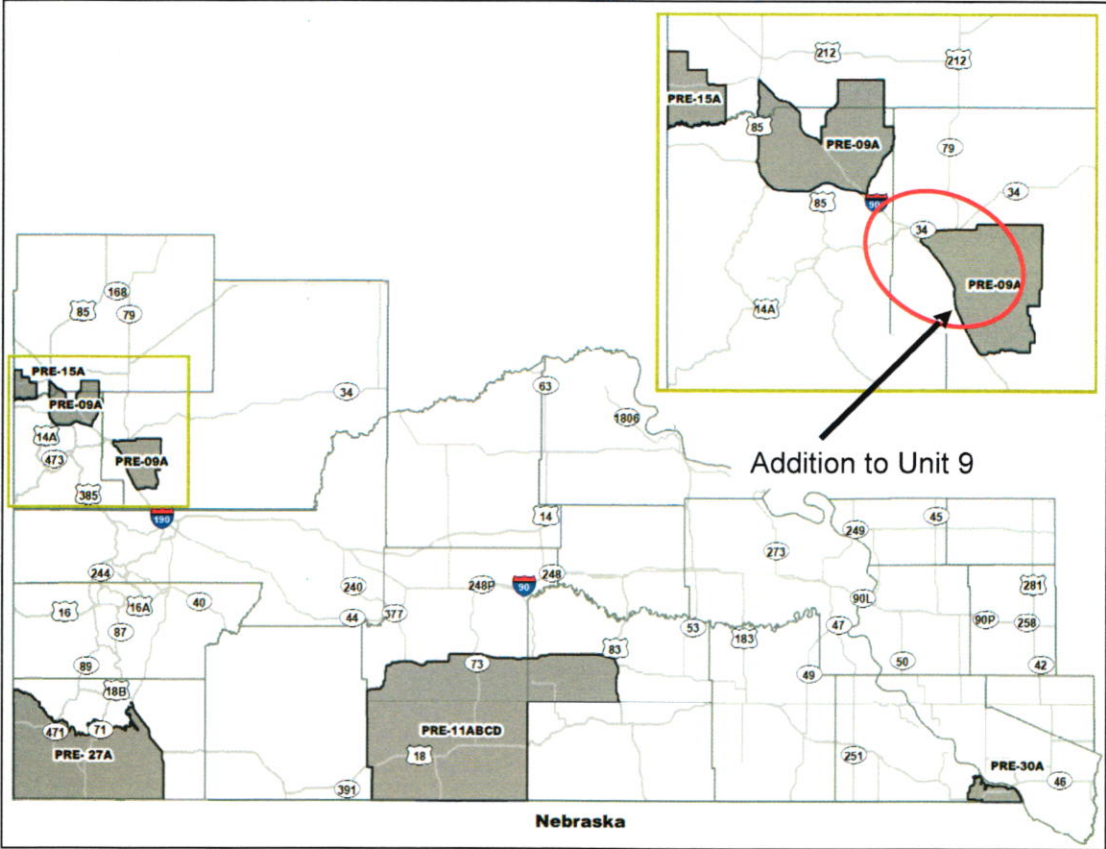
SUPPORTIVE INFORMATION

Year	Licensed Hunters	Hunter Success	Bulls Harvested	Cows Harvested
2011	128	28%	19	17
2012	97	46%	24	20
2013	96	34%	18	14
2014	92	68%	30	31
2015	98	55%	29	25

2015	"Any Elk"				"Antlerless Elk"			
	Licensed Hunters	Harvest Success	Bulls Harvested	Cows Harvested	Licensed Hunters	Harvest Success	Bulls Harvested	Cows Harvested
09A	10	60%	5	1	20	44%	1	8
11A	NA	NA	NA	NA	8	67%	0	5
11B	10	100%	9	1	NA	NA	NA	NA
11C	8	60%	5	0	NA	NA	NA	NA
11D	NA	NA	NA	NA	12	73%	0	9
15A	10	20%	2	0	10	10%	0	1
27A	10	80%	8	0	NA	NA	NA	NA
30A	NA	NA	NA	NA	NA	NA	NA	NA

APPROVE _____ MODIFY _____ REJECT _____ NO ACTION _____

Prairie Elk Units



APPROVE MODIFY REJECT NO ACTION

GAME, FISH, AND PARKS COMMISSION ACTION PROPOSAL

Custer State Park Elk Hunting Season (Any Elk) Chapter 41:06:27

Commission Meeting Dates:	Proposal	March 3-4, 2016	Pierre
	Public Hearing	April 7, 2016	Brookings
	Finalization	April 7-8, 2016	Brookings

DEPARTMENT RECOMMENDATION

Duration of Recommendation: 2016 and 2017 hunting seasons.

Season Dates: September 17 – October 2, 2016
September 16 – October 1, 2017

Licenses: 9 resident "Any Elk" licenses

Requirements and Restrictions:

- 1) The unit is open within the boundaries of Custer State Park for the 16-day period beginning the third Saturday of September.
- 2) Harvested elk must be inspected within 24 hours.

Recommended changes from last year:

1. Adjust the number of licenses available from 8 "any elk" to 9 "any elk" licenses.
2. Remove the language in administrative rule depicting the license type and number of licenses from each hunting unit.

SUPPORTIVE INFORMATION

Year	Licenses	Applicants	Success Rate
2006	41	11,709	95%
2007	41	12,768	93%
2008	36	12,572	97%
2009	36	13,063	86%
2010	21	13,065	80%
2011	11	12,060	91%
2012	4	11,133	100%
2013	4	12,888	100%
2014	4	11,762	100%
2015	8	9,136	100%

APPROVE _____	MODIFY _____	REJECT _____	NO ACTION _____
----------------------	---------------------	---------------------	------------------------

**GAME, FISH, AND PARKS COMMISSION ACTION
PROPOSAL**

Custer State Park Early Archery Elk Hunting Season
Chapter 41:06:28

Commission Meeting Dates:	Proposal	March 3-4, 2016	Pierre
	Public Hearing	April 7, 2016	Brookings
	Finalization	April 7-8, 2016	Brookings

DEPARTMENT RECOMMENDATION

Duration of Recommendation: 2016 and 2017 hunting seasons.

Season Dates: September 1-30, 2016
September 1-30, 2017

Licenses: 3 "Any Elk" licenses

Requirements and Restrictions:

1. Season opens the first of September and closes the last day of September.
2. Harvested elk must be inspected within 24 hours.

Recommended changes from last year:

1. Adjust the number of licenses available from 4 "any elk" to 3 "any elk" licenses.
2. Remove the language in administrative rule depicting the license type and number of licenses from each hunting unit.

SUPPORTIVE INFORMATION

Year	Licensed Hunters	1 st Choice Applicants	Success Rate	Elk Harvested
2008	8	3,084	25%	2 bulls
2009	8	3,134	25%	2 bulls
2010	5	3,031	0%	None
2011	3	2,000	33%	1 bull
2012	3	2,078	0%	0
2013	3	2,740	100%	3 bulls
2014	4	3,023	100%	4 bulls
2015	4	3,600	75%	3 bulls

APPROVE _____ **MODIFY** _____ **REJECT** _____ **NO ACTION** _____

**GAME, FISH, AND PARKS COMMISSION ACTION
PROPOSAL**

Special Custer State Park Antlerless Elk Hunting Season

Chapter 41:06:47

Commission Meeting Dates:	Proposal	March 5-6, 2015	Pierre
	Public Hearing	April 1, 2015	Brookings
	Finalization	April 1-2, 2015	Brookings

DEPARTMENT RECOMMENDATION

Duration of Recommendation: 2016 and 2017 hunting seasons.

Season Dates: CAE-CU1: October 8-16, 2016 and October 7-15, 2017
CAE-CU2: October 22-30, 2016 and October 21-29, 2017

Licenses: CAE-CU1: 10 "antlerless elk" licenses
CAE-CU2: 10 "antlerless elk" licenses

Recommended changes from last year:

1. Modify the unit boundary of CAE-CU1 and CAE-CU2 from within the boundaries of Custer State Park (CSP) to all of Custer State Park south and west of line beginning at the CSP west boundary and Lower French Creek Road southeast to Highway 87, north to Wildlife Loop Road (WL), southeast along WL to Oak Draw Road, east on Oak Draw Road to WL, south on WL to Lane Johnny Road, southeast on Lane Johnny Road to CSP east boundary fence, south then west then north along the CSP boundary fence to point of beginning.
2. Change the season dates for CAE-CU1 from nine consecutive days beginning on the first Thursday following the third Saturday of September to nine consecutive days beginning on the third Saturday following the third Saturday in September and for CAE-CU2 from nine consecutive days beginning on the Tuesday following Native American Day to nine consecutive days beginning on the fifth Saturday following the third Saturday in September.
3. Increase the number of "antlerless elk" licenses from 0 to 20.
4. Repeal Unit CAE-ZZ1.
5. Remove the language in administrative rule depicting the license type and number of licenses from each hunting unit.

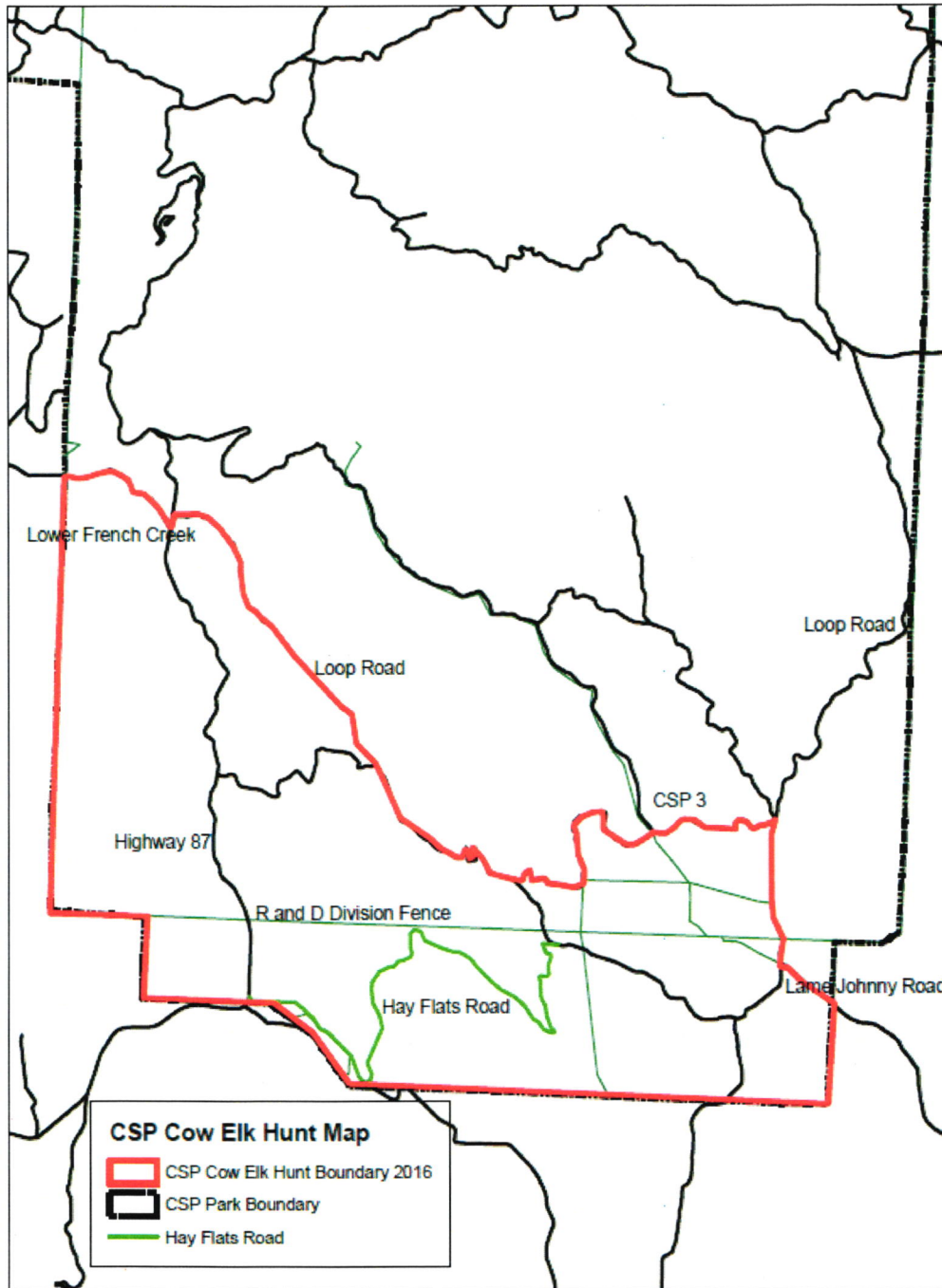
SUPPORTIVE INFORMATION

Successful hazing of elk from Wind Cave National Park (WCNP) into CSP has led to a large concentration of these elk in the southern portion of CSP (RD Pasture). This herd numbers approximately 200 animals and they spend the majority of the year on the roughly 8 square mile RD pasture. Additionally, these elk spend roughly half their time on the east end of the RD (3.17 mi²). Elk densities of 25 to 60 elk/mi² create a concern for habitat conditions and disease. Continuous grazing during the growing season will lead to overutilization of forage and an eventual decline in condition and production. This pasture is also critical pasture for facilitating the buffalo roundup. Harvest during this season would be targeted at this herd of elk and will reduce densities in this area through harvest and dispersal. While the overall goal is to increase the elk population in CSP, this harvest strategy will provide antlerless elk reduction in a specific area of CSP.

Year	Licenses	Applicants	Success Rate	HRD
2006	100	4,105	73%	291
2007	60	4,339	57%	185
2008	40	4,383	59%	108
2009	20	4,546	95%	50
2010	5	4,420	80%	13
2011	CLOSED			
2012	CLOSED			
2013	CLOSED			
2014	CLOSED			

APPROVE _____ **MODIFY** _____ **REJECT** _____ **NO ACTION** _____

Proposed Boundary



APPROVE _____

MODIFY _____

REJECT _____

NO ACTION _____

2016 and 2017 Elk Hunting Seasons

2015 Black Hills Elk			
Unit	Resident Licenses		
	Any Elk 21	Atl Elk 23	
H1A	75		
H1B		40	
H2A	250		
H2B			
H2C		150	
H2D			
H2E		250	
H2F			
H2G			
H2H			
H2I			
H2J			
H3A	80		
H3B			
H3C			
H3D			
H3E		60	
H3F			
H3G			
H4A			
H5A	5		
H7A	15		
H7B			
H9A	5		
H9B			
TOTAL	430	500	930
Unit	Any Elk 21	Atl Elk 23	
Contingency	NA	100	100

2016 & 2017 Black Hills Elk			
Unit	Resident Licenses		
	Any Elk 21	Atl Elk 23	
H1A	75		
H1B		30	
H2A	250		
H2B		200	
H2C		150	
H2D		50	
H2E		200	
H2F		200	
H2G		125	
H2H		25	
H2I		25	
H2J		25	
H3A	80		
H3B		15	
H3C		15	
H3D		15	
H3E		50	
H3F		50	
H3G		50	
H4A	8		
H5A	5		
H7A	20		
H7B		20	
H9A	5		
H9B		10	
TOTAL	443	1255	1,698
Unit	Any Elk 21	Atl Elk 23	
Contingency	NA	251	251

2015 Archery Elk			
Unit	Resident Licenses		
	Any Elk 21	Atl Elk 23	
H1A	25	5	
H2A	85	44	
H3A	27	7	
H4A			
H5A	2		
H7A	5		
H9A			
30A			
TOTAL	144	56	200
Unit	Any Elk 21	Atl Elk 23	

2016 & 2017 Archery Elk			
Unit	Resident Licenses		
	Any Elk 21	Atl Elk 23	
H1A	25	10	
H2A	90	115	
H3A	25	10	
H4A			
H5A	2		
H7A	5	5	
H9A			
30A			
TOTAL	147	140	287
Unit	Any Elk 21	Atl Elk 23	

2015 Prairie Elk			
Unit	Resident Licenses		
	Any Elk 21	Atl Elk 23	
9A	10	20	
11A		8	
11B	10		
11C	8		
11D		12	
15A	10	10	
27A	10		
30A			
TOTAL	48	50	98
Unit	Any Elk 21	Atl Elk 23	

2016 & 2017 Prairie Elk			
Unit	Resident Licenses		
	Any Elk 21	Atl Elk 23	
9A	10	40	
11A		10	
11B	12		
11C	12		
11D		20	
15A	10	10	
27A	15	10	
30A			
TOTAL	59	90	149
Unit	Any Elk 21	Atl Elk 23	

2015 Custer State Park			
Season	Resident Licenses		
	Any Elk 21	Atl Elk 23	
Archery	4		
Rifle	8		
TOTAL	12		12
Season	Any Elk 21	Atl Elk 23	

2016 & 2017 Custer State Park			
Season	Resident Licenses		
	Any Elk 21	Atl Elk 23	
Archery	3		
Rifle	9	20	
TOTAL	12	20	32
Season	Any Elk 21	Atl Elk 23	

**GAME, FISH, AND PARKS COMMISSION ACTION
PROPOSAL**

**Goose Hunting Season
Chapter 41:06:16**

Commission Meeting Dates:	Proposal	March 3-4, 2016	Pierre
	Public Hearing	April 7, 2016	Brookings
	Finalization	April 7-8, 2016	Brookings

DEPARTMENT RECOMMENDATION

AUGUST MANAGEMENT TAKE

Duration of Recommendation: 2016 and 2017 hunting seasons.

Season Dates: August 20-31, 2016
August 19-31, 2017

Open Area: Pennington County west of the Cheyenne River.

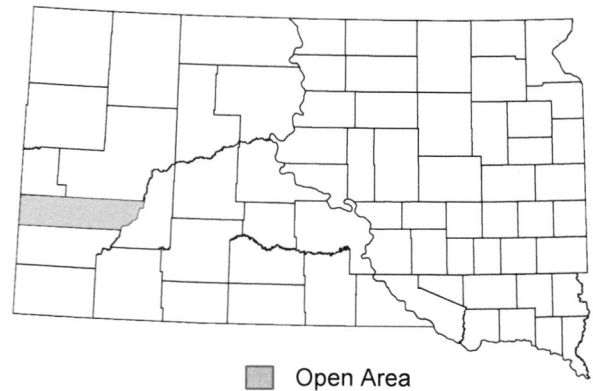
Daily Bag Limit: 15 Canada geese

Possession Limit: None

Licenses: Residents only

Requirements and Restrictions:

1. Annual small game or combination license and state migratory bird certification. Federal waterfowl stamp is not required.
2. Shooting hours are one-half hour before sunrise to sunset.
3. All other restrictions are the same as during the Early Fall and Regular Canada Goose Season.



Recommended changes from last year:

1. Remove Brookings, Brown, Clark, Codington, Day, Deuel, Hamlin, Hanson, Hutchinson, Grant, Kingsbury, Lake, Lincoln, Marshall, McCook, Miner, Minnehaha, Moody, Roberts, Spink, Turner and Union counties from the open area.

SUPPORTIVE INFORMATION

Field observations indicated resident and wintering Canada goose numbers have shown an increasing trend in the Rapid City area and there are public safety concerns for the Rapid City Regional Airport. Retaining the August Management Take in this portion of Pennington County is a harvest management tool to help address this concern.

Year	Number of Hunters	Ave. Days Hunted	Ave. Season Bag	Harvest
2010	3,538	2.99	8.21	29,047
2011	3,211	2.74	9.44	30,300
2012	3,581	3.08	10.26	36,757
2013	2,345	3.42	7.93	18,592
2014	2,302	3.24	8.98	20,671
2015	1,686	3.03	6.06	10,221

APPROVE _____ **MODIFY** _____ **REJECT** _____ **NO ACTION** _____

GAME, FISH AND PARKS COMMISSION ACTION PROPOSAL

Early Fall Canada Goose and Waterfowl Hunting Seasons

Chapters 41:06:50 and 41:06:16

Commission Meeting Dates:	Proposal Public Hearing Finalization	March 3-4, 2016 April 7, 2016 April 7-8, 2016	Pierre Brookings Brookings
----------------------------------	---	--	---

DEPARTMENT RECOMMENDATION

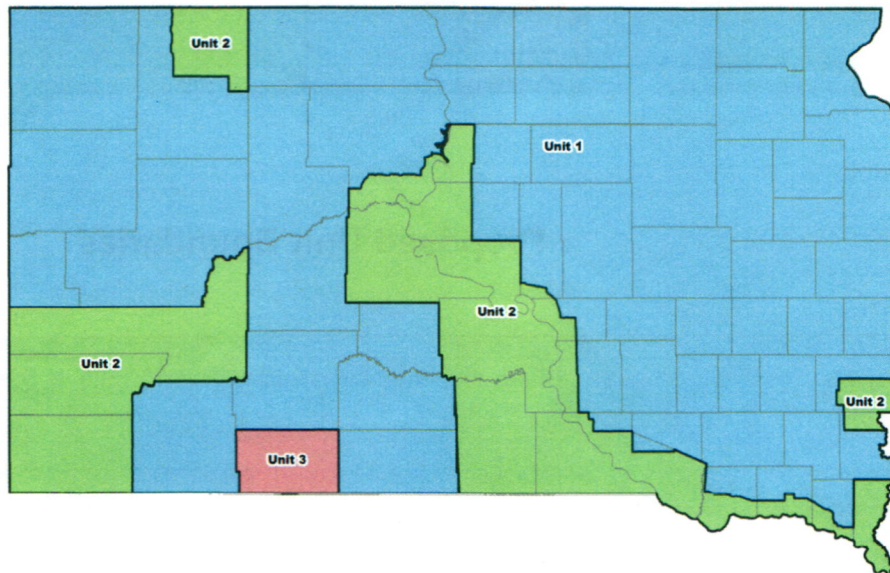
Duration of Recommendation: 2016 and 2017 hunting seasons.

Season Dates:	September 3 - 30, 2016 September 2 - 30, 2017	Open Area:	Unit 1 (see map below)
----------------------	--	-------------------	------------------------

Daily Limit:	15 Canada Geese	Possession Limit:	45 Canada Geese
---------------------	-----------------	--------------------------	-----------------

Requirements and Restrictions:

1. Shooting hours are one-half hour before sunrise to sunset.



Recommended changes from last year:

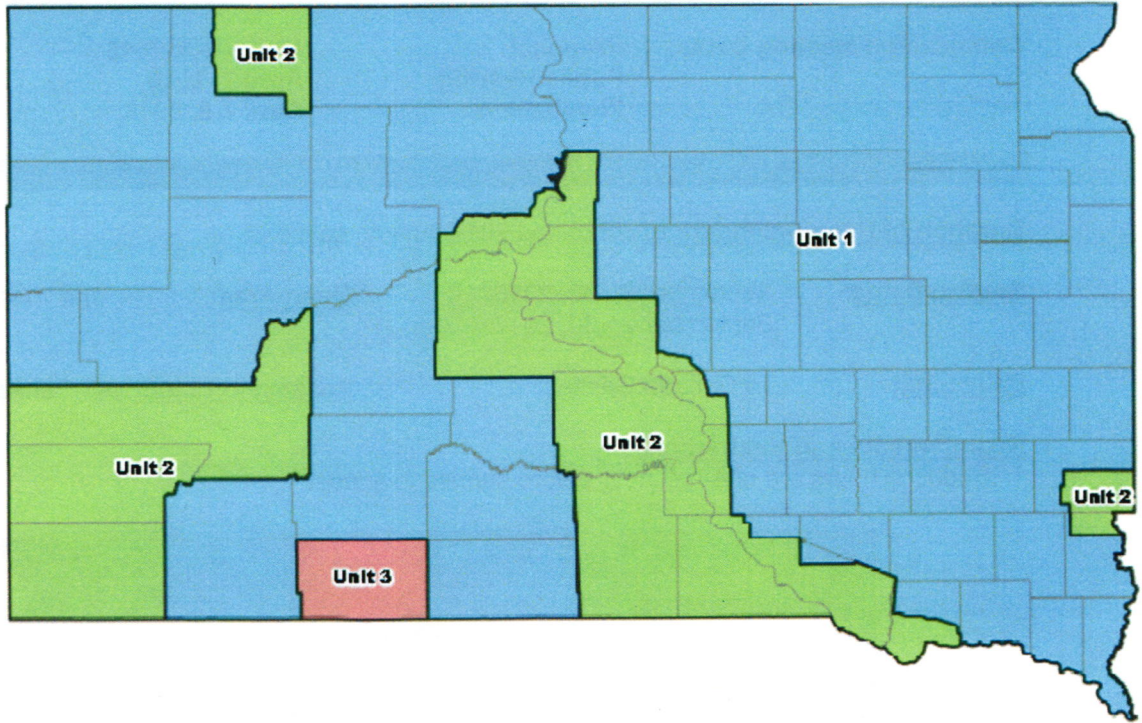
1. Amend 41:06:16 to modify the boundaries of Units 1 and 2 by adding those portions of Yankton, Clay and Union counties near the Missouri River to Unit 2 (see attached map).
2. Change the start date from September 1 to the first Saturday of September.

SUPPORTIVE INFORMATION

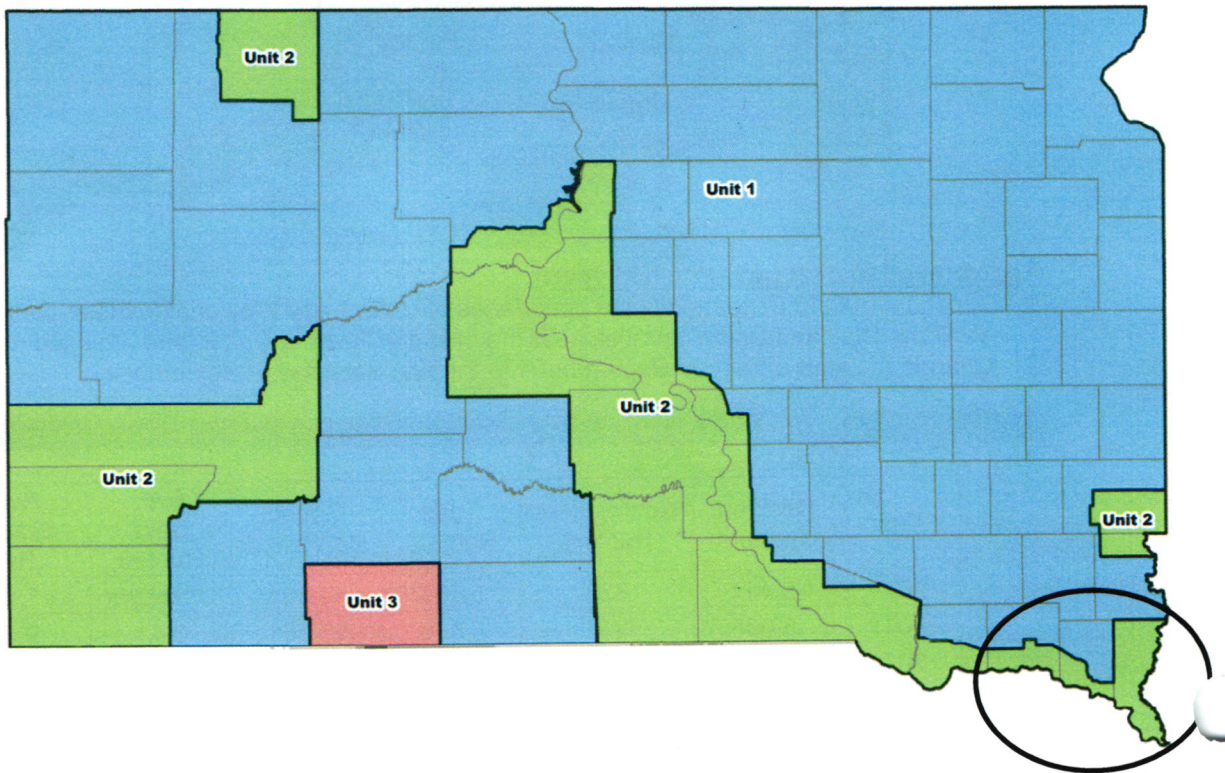
Year	Resident Hunters	Nonresident Hunters	Total Hunters	Geese Harvested	Ave. Days Hunted	Ave. Season Bag
2010	5,444	323	5,767	44,183	Unknown	7.66
2011	5,098	318	5,416	50,361	3.41	9.30
2012	3,189	447	3,636	28,788	3.32	7.92
2013	4,372	338	4,710	31,976	Unknown	6.60
2014	4,748	358	5,106	28,814	Unknown	5.64

APPROVE _____ **MODIFY** _____ **REJECT** _____ **NO ACTION** _____

Current Unit Boundaries

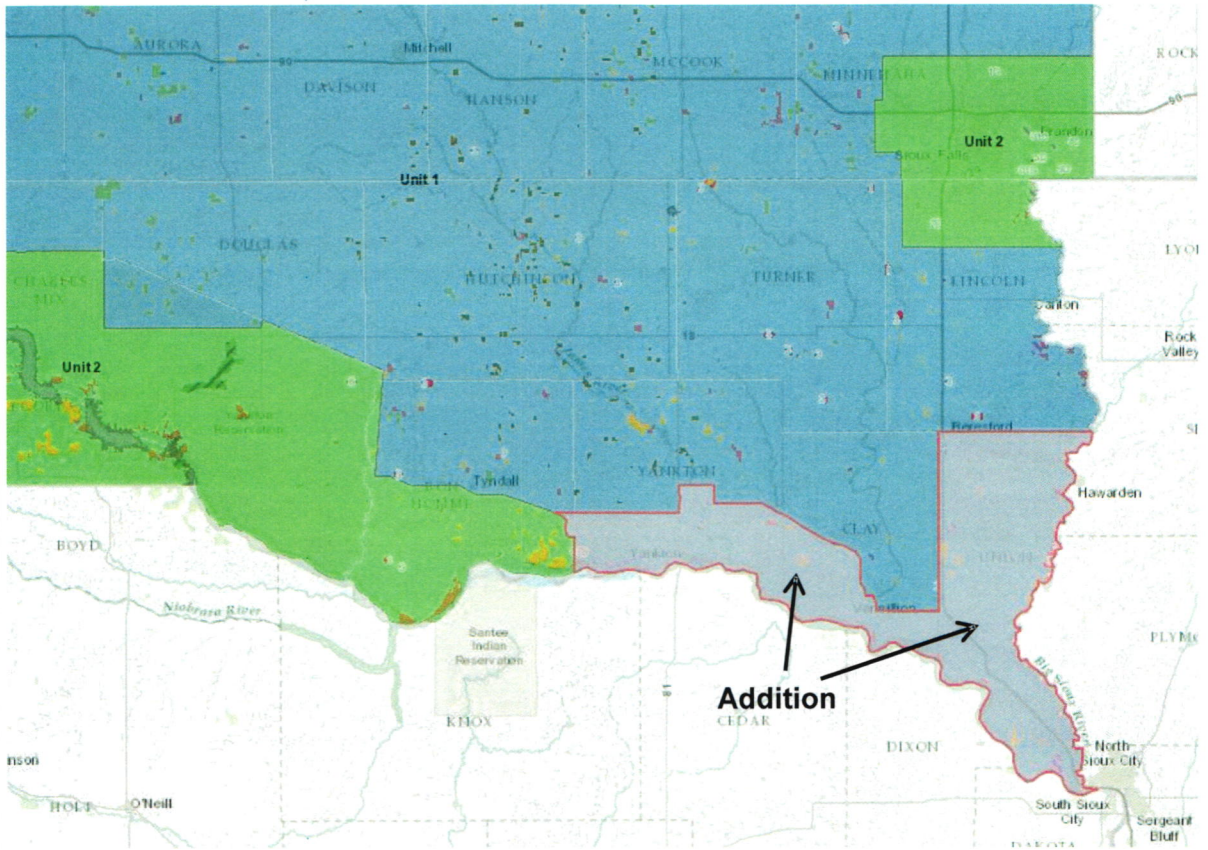


Proposed Unit Boundaries



APPROVE	MODIFY	REJECT	NO ACTION
---------	--------	--------	-----------

Addition to Unit 2



APPROVE _____ MODIFY _____ REJECT _____ NO ACTION _____

**GAME, FISH AND PARKS COMMISSION ACTION
PROPOSAL**

**Duck Hunting Season
Chapter 41:06:16**

Commission Meeting Dates:	Proposal	March 3-4, 2016	Pierre
	Public Hearing	April 7, 2016	Brookings
	Finalization	April 7-8, 2016	Brookings

DEPARTMENT RECOMMENDATION

Duration of Recommendation: 2016-2017 hunting season.

Season Dates and Open Areas:

High Plains Zone:	October 8, 2016 – January 12, 2017
Low Plains North & Low Plains Middle Zone:	September 24 – December 6, 2016
Low Plains South Zone:	October 8 – December 20, 2016

Daily Limits:

Ducks: 6 The duck limit may be comprised of no more than: 5 mallards (which may include no more than 2 hens), 3 wood ducks, 3 scaup, 2 redheads, 2 pintails, and 2 canvasbacks.

- 2 Bonus blue-winged teal (first 16 days of the season only)
 - Low Plains North & Low Plains Middle Zones: September 24 – October 9, 2016
 - High Plains and Low Plains South Zones: October 8 – 23, 2016

Coots: 15

Mergansers: 5 (may include no more than 2 hooded mergansers).

Possession Limits: Three times the daily bag limits.



Recommended changes from last year: None.

SUPPORTIVE INFORMATION

Year	Resident Hunters	Nonresident Hunters	Ducks Harvested
2010	14,038	4,123	262,302
2011	13,394	4,132	264,740
2012	12,797	3,961	233,608
2013	13,456	3,842	240,393
2014	13,471	3,565	221,981

APPROVE _____ **MODIFY** _____ **REJECT** _____ **NO ACTION** _____

**GAME, FISH AND PARKS COMMISSION ACTION
PROPOSAL**

**Goose Hunting Season
Chapter 41:06:16**

Commission Meeting Dates:	Proposal	March 3-4, 2016	Pierre
	Public Hearing	April 7, 2016	Brookings
	Finalization	April 7-8, 2016	Brookings

DEPARTMENT RECOMMENDATION

Duration of Recommendation: 2016-17 hunting season

Season Dates:

Canada Geese (and Brant)

Unit 1: October 1 – December 18, 2016

Unit 2: October 31, 2016 February 12, 2017

Unit 3: January 14-22, 2017

Light Geese

Statewide: September 24 – December 18, 2016

White-fronted Geese

Statewide: September 24 – December 18, 2016

Daily Limits:

Canada geese

Unit 1: 8

Unit 2: 4

Unit 3: 4

Light geese: 50

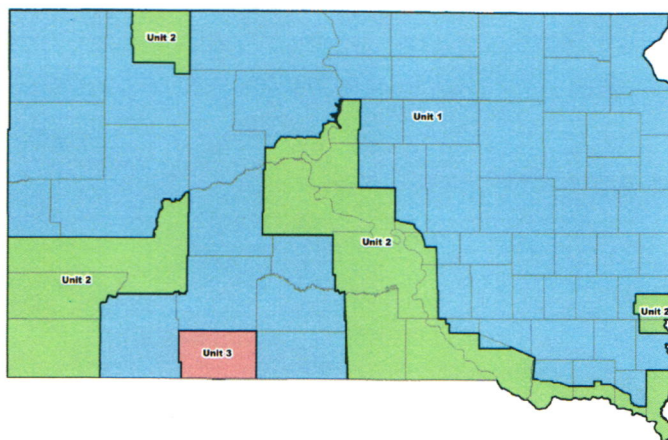
White-fronted goose: 2

Possession Limits:

Light geese: Unlimited

All other geese: Three times the daily limit

Canada Goose Units



Recommended changes from last year: None.

SUPPORTIVE INFORMATION

Year	Canada Geese (all seasons)			Light Geese (fall season only)			White-fronted Geese		
	Res Hunters	NR Hunters	Geese Harvested	Res Hunters	NR Hunters	Geese Harvested	Res Hunters	NR Hunters	Geese Harvested
2010	13,552	2,198	129,628	4,031	551	36,259	985	261	891
2011	13,376	2,167	137,837	3,614	617	40,828	973	288	1,011
2012	13,725	2,277	164,417	4,113	726	55,171	1,685	440	3,485
2013	12,004	2,160	124,156	3,747	641	53,322	1,098	224	1,891
2014	12,130	1,969	103,149	3,572	514	53,815	951	244	1,529

APPROVE _____ **MODIFY** _____ **REJECT** _____ **NO ACTION** _____

HUNTING REQUIREMENTS AND PROHIBITED METHODS
CHAPTER 41:06:04

Commission Meeting Dates:	Proposal	March 3-4, 2016	Pierre
	Public Hearing	April 7, 2016	Brookings
	Finalization	April 7-8, 2016	Brookings

DEPARTMENT RECOMMENDATION

Amend 41:06:04:17 to address air gun performance specifications for hunting cottontail rabbit, squirrel and species defined as a predator/varmint.

Recommended changes:

41:06:04:17. Minimum air gun specifications. No person may hunt species listed in SDCL 41-8-31(1A) with an air gun that is factory-rated to produce a muzzle velocity of less than ~~1,000~~ 600 feet per second. Only hunting pellets are permitted.

SUPPORTIVE INFORMATION

Department-sponsored legislation (HB1006) was passed in 2011, legalizing air guns for small game mammals and predators/varmints. The GFP Commission, in June 2011, finalized a rule regarding air gun specifications that mandated the weaponry be factory-rated to produce a muzzle velocity of at least 1,000 feet per second. Agency representatives have recently been contacted by air gun enthusiasts wishing to use modern air guns that are more suited for hunting, but they do not meet the current specifications. The department recommends lowering the required muzzle velocity to 600 feet per second to accommodate more weapons for air gun hunting.

41-8-31. Hunting methods restricted--Violation as misdemeanor. No person may at any time hunt, catch, take, attempt to take, or kill any small game or game animal in any other manner than by shooting the same with a firearm, except:

(1) Game birds and animals may be taken with birds trained in falconry or with bow and arrow;

(1A) Cottontail rabbit, red squirrel, fox squirrel, grey squirrel, and any species defined as a predator/varmint in § 41-1-1 may be taken with an air gun that complies with specifications established by rules promulgated by the Game, Fish and Parks Commission pursuant to chapter 1-26;

(2) A person with a permanent or temporary disability who is missing an upper limb, physically incapable of using an upper limb, or confined to a wheelchair may obtain a disabled hunter permit to use a crossbow or other legal bow equipped with a draw-lock device to take game birds and animals;

(3) A person who is legally blind, is legally licensed, possesses a disabled hunter permit, and is physically present and participates in the hunt but cannot safely discharge a firearm or bow and arrow, may claim game birds and animals taken by a designated hunter in accordance with the license possessed by the hunter who is legally blind;

(3A) A person who is quadriplegic, is legally licensed, possesses a disabled hunter permit, and is physically present and participates in the hunt but cannot safely discharge a firearm or bow and arrow, may claim game birds and animals taken by a designated hunter in accordance with the license possessed by the hunter who is quadriplegic; and

(4) A person with a permanent or temporary disability as defined in subdivision (2) of this section who is legally licensed for a youth big game hunting season, possesses a disabled hunter permit, and is physically present and participates in the hunt but is unable to safely discharge a firearm or bow and arrow, may claim any big game animal taken by a designated hunter in accordance with the youth big game license possessed by the person with a permanent or temporary disability.

A violation of this section is a Class 2 misdemeanor.

APPROVE MODIFY REJECT NO ACTION

**USES OF PARKS AND PUBLIC LANDS
CHAPTER 41:03:01**

Commission Meeting Dates:	Proposal	March 3-4, 2016	Pierre
	Public Hearing	April 7, 2016	Brookings
	Finalization	April 7-8, 2016	Brookings

DEPARTMENT RECOMMENDATION

- 1.) Amend 41:03:01:02 to address property that may be left on department lands.
- 2.) Amend 41:03:01:19 to create an allowance for portable blinds on department lands and regulate their placement.
- 3.) Promulgate a new rule to create an allowance for trail cameras on department lands and regulate their placement.

Recommended changes:

41:03:01:02. Leaving of property on department land. A person may not leave any property after 11:00 p.m. ~~in a state park, recreation area, lakeside use area on public lands owned, leased, or controlled by the department~~ or in the water adjoining such an area, or within the right-of-way of the George S. Mickelson Trail unless that person is legally camped, lodged, or fishing or the property is located in a leased space designated for the specified use of that property. A person may not ~~park or~~ leave any ~~vessels, fish houses, camping equipment, house trailers, or any other property~~ for more than five days on ~~other lands owned or leased, leased, or controlled~~ by the department without written permission from an authorized representative of the department.

The provisions of this section do not apply to legal legally placed tree stands, elevated platforms, portable blinds, trail cameras, or trapping equipment.

41:03:01:19. Limitation on tree stands, elevated platforms, and portable blinds. Construction or use of permanent tree stands, permanent blinds, and climbing devices is prohibited on lands owned, leased, or controlled by the department. Portable tree stands, portable blinds, and climbing devices that do not utilize nails, wire, or bolts for attachment are allowed from August 25 to February 15, inclusive. Portable blinds may also be used during the spring turkey seasons established in chapters 41:06:13 and 41:06:15, by licensed spring turkey hunters. One screw-in "T" may be used to stabilize a tree stand. Removable screw-in steps may be used to access a tree stand. The name and address or the year and current applicable big game license number of the owner or user must be on the exterior of an unoccupied portable blind and legible from the ground on a tree stand and legible from the ground. Other elevated platform devices that are not attached to a tree must meet the requirements of this rule for permitted dates and for labeling if left overnight or unattended.

41:03:01:36. Limitation on trail cameras. Trail cameras placed on public lands owned, leased, or controlled by the department may be attached to trees, posts, or other structures by utilizing no more than one nail, bolt, or screw. The name and address or the year and current applicable big game license number of the owner or user must be on the exterior of an unattended trail camera. A trail camera is a remotely activated device set to capture photos, video, sound, or other evidence of activity while the user is absent from the location.

SUPPORTIVE INFORMATION

Existing public land regulations do not fully address the use of some modern hunting equipment, namely ground blinds and trail cameras, which have grown increasingly popular with big game hunters. A five-day limit currently exists for leaving many types of recreational equipment and property on GFP lands. The department wishes to extend the period in which this equipment may be utilized and appropriately regulate its placement.

APPROVE MODIFY REJECT NO ACTION

12

Comes, Rachel

From: Chris Hesla <sdwf@mncomm.com>
Sent: Monday, February 29, 2016 11:48 AM
To: Comes, Rachel
Subject: Petition for Rule Change

Categories: Commission

Petition for Rule Change

First Name: Chris

Last Name: Hesla

Address: PO Box 7075
Pierre, SD 57501

Phone Number: 605-224-7524

Email Address: sdwf@mncomm.com

Rule Identification: 41-06-16-11(5)

Describe the change you are seeking: Would like the Commission to consider changing the available lic. from 1500 to 300

Explain the reason for the described change: We would like to see the change to a more realistic number of lic. available to license actually sold. We would also support wording if needed in the future if more than the 300 are sold and needed up to the 1500. We support the ability for the Commission to have in place an emergency clause to accommodate the Central SD Counties and the landowners who provide public access in exchange for these Non-resident private land only lic.



United States Department of the Interior

BUREAU OF RECLAMATION
Great Plains Region
Dakotas Area Office
P.O. Box 1017
Bismarck, ND 58502-1017

IN REPLY REFER TO:

DK-1000
LND-8.00

Mr. Kelly Hepler, Secretary
South Dakota Department of Game, Fish and Parks
523 East Capitol Avenue
Pierre, SD 57501

Subject: Marker Rent Surveys for Typical Cabin and Trailer Sites, Situated Around Angostura Reservoir in Fall River County and Shadehill Reservoir in Perkins County, South Dakota

Dear Mr. Hepler:

It was a pleasure meeting with you and your staff on February 3, 2016, to discuss market rent surveys and recreation and wildlife projects.

I am sending this letter, as a follow up to our discussions that market rent survey/appraisals have been completed for the exclusive use cabin and trailer sites situated around Angostura and Shadehill Reservoirs. Federal regulation and Bureau of Reclamation policy require that fair market value be collected for permits issued for non-Federal use of Reclamation-administered lands. Fair market value is determined by a rights-of-use appraisal or market rent survey which will now be conducted at least every five years. The recently completed market rent surveys for Angostura and Shadehill Reservoirs establish the fair market value for exclusive use permits on Reclamation lands in South Dakota. If an interested party would like to perform their own market rent survey or appraisal they may do so at their expense, however, the appraisal will need to meet the requirements of the Office of Valuation Services and be accepted before a new rate would be established. All rights-of-use must comply with the provisions of Title 43 CFR 429, as amended and supplemented, and OMB Circular A-25.

Listed below are the new market rental rates for the cabins and trailers in South Dakota.

- Angostura Cabin Area: \$2400/seasonal
- Angostura Trailer Areas: \$2700/seasonal
- Shadehill Cabin and Trailer Areas: \$2100/seasonal

The results of the market rent surveys determined fair market value to be substantially higher than the current fees. We realize that some of the permittees may have "sticker shock" and concern with the higher rates. With this in mind and because a market rent survey had not been completed recently, Reclamation has decided to give its managing partners the latitude to

incorporate up to a three year phase-in plan for the new rates, and wait until January 2017 to implement the new rates.

As discussed in our meeting, Reclamation will work collaboratively with you and your staff to address permittees' concerns and questions on this issue. If you, your staff or the public have any further questions or require additional information, please contact Reclamation's Public Involvement Specialist, Patience Hurley at 701-221-1204.

Sincerely,

A handwritten signature in cursive script, appearing to read "David Rosenkrance". The signature is written in dark ink and is positioned above the typed name.

David Rosenkrance
Area Manager



15a

DEPARTMENT OF GAME, FISH, AND PARKS

Foss Building
523 East Capitol
Pierre, South Dakota 57501-3182

March 2, 2016

Dear Permittee,

The Department was recently notified by the U.S. Bureau of Reclamation that a Market Rent Survey has been completed for the existing private exclusive use cabins and trailer sites located on federal lands at both Angostura and Shadehill Recreation Areas. Please see Reclamation's attached letter dated February 19, 2016 received by the Department in which they state annual lot rental values determined by these surveys are to be assessed as follows:

Shadehill cabin and trailer sites: \$2,100
Angostura cabin area sites: \$2,400

These are significant increases to your current permit fees which were adjusted in 1988 based on a market rent appraisal. Fees have been adjusted annually since that time by the Game, Fish and Parks Commission at a rate consistent with the projected year-end adjustment of the Consumer Price Index.

The Bureau of Reclamation has indicated that federal policy mandates market rent surveys are to be conducted for all private exclusive use sites on Reclamation lands every five years. The last known appraisal for cabin and trailer sites located on Reclamation land within South Dakota was the appraisal completed in 1988 mentioned above.

Reclamation has granted the option to phase these rates in over a maximum 3-year period, but is requiring that rates are increased at least in part beginning in 2017. Rates have been set for 2016 and no further adjustments will be made for the current year.

Reclamation has also granted the opportunity for permit holders to challenge these surveys through an independent appraisal. Any appraisal conducted must be approved by Reclamation's Office of Valuation for it to be considered. The Department would be willing to assist in an effort to organize an independent appraisal if the cabin owners desire. The appraisal would be funded by the participating permit holders.

Department staff will brief the Game Fish and Parks Commission on the Market Rent Surveys and attached Reclamation letter at their meeting on March 3, 2016 in Pierre as an informational item. No action will be proposed relative to the market rent surveys at the March meeting. We do not anticipate any formal action by the GF&P Commission on this matter until later in the year. The first consideration will be to determine if the

permittees are wanting to do an independent appraisal to determine fair market value for these permits going forward.

As this proposed increase results from federal policy, the Department has suggested that Reclamation coordinate public meetings to allow for the affected permit holders to voice their questions, concerns and comments. You will be informed of any such meeting planned by Reclamation.

The full Market Rent Survey reports can be found at the Bureau of Reclamation's website at the address below:

<http://www.usbr.gov/gp/dkao/>

Any questions or comments for the Bureau of Reclamation should be directed to the following:

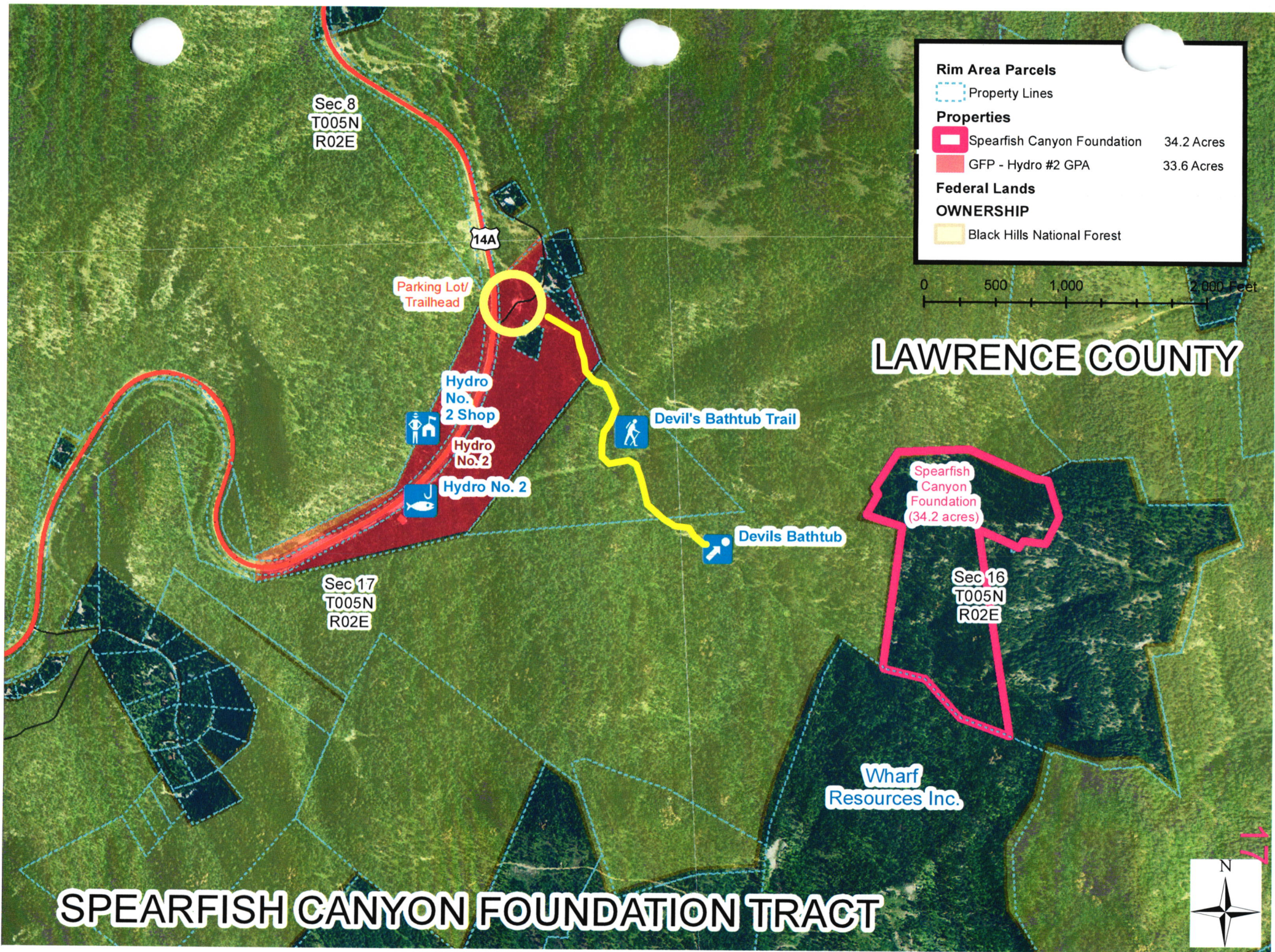
Patience Hurley
Public Involvement Specialist
PHurley@usbr.gov
701.221.1204

You may also contact Sean Blanchette on behalf of Game, Fish and Parks at Sean.Blanchette@state.sd.us or 605.773.3391.

Sincerely,

Douglas Hofer
Director, Division of Parks and Recreation

CC: Game, Fish and Parks Commission
Kelly Hepler, Secretary, Department of Game, Fish and Parks
Sean Blanchette, Concessions Manager, Department of Game, Fish and Parks
David Rosenkrance, Area Manager, Bureau of Reclamation



Sec 8
T005N
R02E

14A

Parking Lot/
Trailhead

Hydro
No.
2 Shop

Hydro
No. 2

Hydro No. 2

Devil's Bathtub Trail

Devils Bathtub

Sec 17
T005N
R02E

Rim Area Parcels

- Property Lines

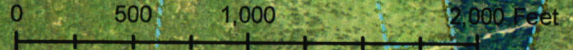
Properties

- Spearfish Canyon Foundation 34.2 Acres
- GFP - Hydro #2 GPA 33.6 Acres

Federal Lands

OWNERSHIP

- Black Hills National Forest



LAWRENCE COUNTY

Spearfish
Canyon
Foundation
(34.2 acres)

Sec 16
T005N
R02E

Wharf
Resources Inc.

SPEARFISH CANYON FOUNDATION TRACT



January to February 2016 Revenue Comparison by Item

	2015		2016		% Change
	Number	Dollar	Number	Dollar	
Annual	669	\$ 20,070	909	\$ 27,270	36%
Second Vehicle	106	\$ 1,590	126	\$ 1,890	19%
Combo	959	\$ 43,155	1,119	\$ 50,355	17%
Transferable	98	\$ 6,370	112	\$ 7,280	14%
Daily / Person	382	\$ 1,528	270	\$ 1,081	-29%
Daily / Vehicle	505	\$ 3,030	425	\$ 2,547	-16%
Unattended Vehicle Daily	29	\$ 285	9	\$ 90	-68%
Motorcoach Permit	4	\$ 12	7	\$ 21	75%
GSM Annual Trail Pass	126	\$ 1,890	180	\$ 2,700	43%
GSM Daily Trail Pass	94	\$ 282	145	\$ 436	55%
CSP Temp Daily / Vehicle	278	\$ 5,565	415	\$ 6,223	12%
Bike Band	1	\$ 10	1	\$ 10	0%
One-Day Special Event	N/A	\$ 450	N/A	\$ 225	-50%
PERMITS	3,251	\$ 84,237	3,718	\$ 100,128	19%
Camping Services Permits	-	\$ 1,415,879	-	\$ 1,426,648	1%
Gift Card	-	\$ 1,215	-	\$ 3,000	147%
Picnic Reservations	-	\$ 2,680	-	\$ 450	-83%
Firewood	44	\$ 174	35	\$ 140	-20%
LODGING	44	\$ 1,419,948	35	\$ 1,430,238	1%
TOTAL	3,294	\$ 1,504,185	3,753	\$ 1,530,366	2%

February 2016 YTD Revenue Comparison by District

LOCATION	2015	2016	%
Fort Sisseton	\$ 5,993	\$ 6,964	16%
Roy Lake	\$ 13,517	\$ 12,065	-11%
Sica Hollow		\$ 123	
DISTRICT 1	\$ 19,510	\$ 19,152	-2%
Richmond Lake	\$ 3,046	\$ 3,523	16%
Mina Lake	\$ 16,576	\$ 12,570	-24%
Lake Louise	\$ 4,944	\$ 4,128	-17%
Fisher Grove	\$ 1,882	\$ 1,315	-30%
Amsden		\$ -	
DISTRICT 2	\$ 26,448	\$ 21,536	-19%
Sandy Shore	\$ 1,097	\$ 1,982	81%
Hartford Beach	\$ 9,010	\$ 9,326	4%
Lake Cochrane	\$ 3,305	\$ 3,092	-6%
Pelican Lake	\$ 12,027	\$ 11,104	-8%
Pickerel Lake	\$ 15,378	\$ 13,560	-12%
DISTRICT 3	\$ 40,817	\$ 39,064	-4%
Oakwood Lakes	\$ 20,636	\$ 19,456	-6%
Lake Poinsett	\$ 13,896	\$ 13,068	-6%
Lake Thompson	\$ 35,094	\$ 31,749	-10%
DISTRICT 4	\$ 69,626	\$ 64,273	-8%
Lake Herman	\$ 13,058	\$ 11,989	-8%
Walkers Point	\$ 5,489	\$ 5,726	4%
DISTRICT 5	\$ 18,547	\$ 17,715	-4%
Snake Creek	\$ 34,542	\$ 29,905	-13%
Platte Creek	\$ 4,636	\$ 4,430	-4%
Burke Lake	\$ 90	\$ 240	167%
Buryanek	\$ 11,773	\$ 11,721	0%
DISTRICT 6	\$ 51,041	\$ 46,296	-9%
Palisades	\$ 26,731	\$ 23,207	-13%
Lake Vermillion	\$ 20,698	\$ 19,544	-6%
Big Sioux	\$ 14,203	\$ 15,540	9%
DISTRICT 7	\$ 61,632	\$ 58,291	-5%
Newton Hills	\$ 45,970	\$ 42,170	-8%
Lake Alvin	\$ 571	\$ 126	-78%
Union Grove	\$ 2,058	\$ 1,606	-22%
Adams	\$ 250	\$ 988	295%
DISTRICT 8	\$ 48,849	\$ 44,890	-8%

LOCATION	2015	2016	%
Lewis & Clark	\$ 107,594	\$ 107,688	0%
Springfield	\$ 2,159	\$ 2,023	-6%
Chief White Crane	\$ 22,567	\$ 21,894	-3%
Pierson Ranch	\$ 9,318	\$ 9,839	6%
Tabor		\$ -	
Sand Creek		\$ -	
DISTRICT 9	\$ 141,638	\$ 141,444	0%
White Swan		\$ -	
South Scalp		\$ -	
South Shore		\$ -	
North Point	\$ 21,851	\$ 17,421	-20%
Pease Creek	\$ 2,647	\$ 2,771	5%
Randall Creek	\$ 16,967	\$ 16,102	-5%
Whetstone		\$ -	
North Wheeler		\$ -	
DISTRICT 10	\$ 41,465	\$ 36,293	-12%
Farm Island	\$ 15,310	\$ 18,815	23%
West Bend	\$ 29,963	\$ 31,264	4%
DISTRICT 11	\$ 45,273	\$ 50,079	11%
Okobojo		\$ -	
Oahe Downstream	\$ 35,325	\$ 31,729	-10%
Spring Creek	\$ 1,375	\$ 2,585	88%
Cow Creek	\$ 3,905	\$ 4,562	17%
DISTRICT 12	\$ 40,605	\$ 38,876	-4%
East Whitlock		\$ -	
West Whitlock	\$ 7,225	\$ 7,021	-3%
Lake Hiddenwood	\$ 47	\$ 73	56%
Swan Creek	\$ 940	\$ 409	-56%
Indian Creek	\$ 12,026	\$ 12,831	7%
West Pollock	\$ 450	\$ 938	108%
WalthBay		\$ 30	
Revheim Bay		\$ 21	
DISTRICT 13	\$ 20,688	\$ 21,323	3%
Mickelson Trail	\$ 2,807	\$ 3,876	38%
Bear Butte	\$ 444	\$ 774	74%
DISTRICT 14	\$ 3,251	\$ 4,650	43%
Shadehill	\$ 40,019	\$ 46,628	17%
Llewellyn Johns	\$ 189	\$ 365	93%
Rocky Point	\$ 7,862	\$ 9,740	24%
DISTRICT 15	\$ 48,070	\$ 56,733	18%
Custer	\$ 751,681	\$ 785,142	4%
DISTRICT 16	\$ 751,681	\$ 785,142	4%
Angostura	\$ 33,728	\$ 33,493	-1%
Sheps Canyon	\$ 15,358	\$ 14,455	-6%
DISTRICT 17	\$ 49,086	\$ 47,948	-2%
PIERRE OFFICE	\$ 25,958	\$ 36,661	41%
TOTAL:	\$ 1,504,185	\$ 1,530,366	2%



DEPARTMENT OF GAME, FISH, AND PARKS

Foss Building
523 East Capitol
Pierre, South Dakota 57501-3182

Wildlife Division Land Acquisition Priorities and Guidelines January 2016

Today

South Dakota Game Production Areas and Water Access Areas provide residents and visitors with myriad hunting and fishing opportunities, as well as places to enjoy wildlife and the beauty of the South Dakota landscape. In addition to recreation, Wildlife Division lands provide high quality habitat for hundreds of species of resident and migratory wildlife, including rare and declining species.

Private property dominates the South Dakota landscape, accounting for more than 80 percent of the state's acreage, and is important in conserving our natural resources. Every year, hundreds of thousands of hunters, anglers, trappers, and other outdoor enthusiasts enjoy the bounty of our vast natural resources - a strong testament to the high quality of land stewardship provided by South Dakota landowners.

Wildlife Division lands are an equally important part of the South Dakota landscape, as they exist exclusively for the use and enjoyment of hunters, anglers, and all citizens. Found scattered across the vast South Dakota landscape, Game Production Areas and Water Access Areas often provide a county or region with its most important and readily available hunting or fishing opportunities.

Tomorrow

This document serves to guide the Wildlife Division in its land acquisition activities over the next decade. In doing so, it sets forth and describes the Wildlife Division's land acquisition priorities and guiding principles. These priorities and guiding principles are based upon the expertise of Wildlife Division staff, and the input of Wildlife Division land users and other conservation interests who have shared their thoughts about Wildlife Division land acquisition direction over the years.

When the Wildlife Division began purchasing public hunting lands in the late 1930s, efforts were centered on obtaining Game Production Areas and Water Access Areas to provide management and recreational opportunities for individual species rather than specific habitat types. Over time the Wildlife Division shifted its land acquisition efforts to securing native habitat types that support resident and migratory wildlife species, and parcels that improve management efficiency and effectiveness, while still providing a variety of wildlife related recreational opportunities. This approach has resulted in a widely distributed Wildlife Division land inventory of high quality habitat types that is both biologically sound and publicly acceptable.

Land Acquisition Priorities

The Wildlife Division has established the following land acquisition priorities:

Additions to existing Game Production Areas and Water Access Areas

This includes:

- Parcels that improve public use on and access to existing Wildlife Division lands.
- In-holding and round-out parcels that consolidate or connect existing Wildlife Division lands or other public lands open to hunting and fishing related recreation.
- Parcels that facilitate more efficient and effective wildlife habitat management and development activities on existing Wildlife Division lands.
- Parcels that provide buffers or are necessary for maintaining or enhancing the integrity of existing Wildlife Division lands.

Lake and river access

This includes:

- Parcels providing access to public waters for fishing, boating, and hunting.
- Parcels necessary to address public access needs to newly developed fisheries.

Important habitat types, landscapes, and recreational opportunities:

This includes:

- Parcels necessary to expand existing or develop new administrative facilities.
- Parcels containing significant habitat and hunting opportunities for pheasants.
- Parcels containing significant wetland habitat complexes.
- Parcels that represent intact native prairie grassland systems.
- Parcels of undeveloped lakeshores and riparian corridors.
- Parcels associated with planned and coordinated flood mitigation buyout projects.
- Parcels that provide hunting, fishing, and related wildlife recreation opportunities near population centers.
- Parcels with containing rare, unique, or significant plant or animal species or their habitats.

Land Acquisition Guidelines

The Wildlife Division utilizes the following guidelines when conducting land acquisitions:

Regarding process, the Wildlife Division will:

- Utilize existing and long-standing land acquisition procedures, based in Wildlife Division Policy, South Dakota Administrative Rule, and South Dakota Codified Law, in acquiring property as Game Production Areas and Water Access Areas.
- Work only with willing sellers.
- Utilize a property's market value, as determined by an independent appraisal, in negotiating a purchase price.
- Ensure that property appraisals conducted on behalf of the Wildlife Division are completed by State-Certified General Appraisers and conform to Uniform Standards of Professional Appraisal Practice (USPAP) or Uniform Appraisal Standards for Federal Land Acquisitions (UASFLA) as applicable.

Regarding economics, the Wildlife Division will:

- Carefully consider the economic impacts of proposed land acquisition projects, and champion only those projects with minimal financial burdens and maximum conservation and public use benefits.
- When available as an option, evaluate the costs/benefits of leasing a property for wildlife habitat management and public access opportunities over purchasing it.
- Identify anticipated land management operation, maintenance, and development needs and their associated costs, and develop strategies for meeting these needs prior to acquiring new properties.
- Utilize financial support offered from conservation partners for acquisition and management activities, making the most efficient use of these resources as potential matching funds through grant programs such as the Wildlife and Sport Fish Restoration program.

Regarding land ownership and stewardship, the Wildlife Division will:

- Strive to be a good neighbor in communities in which it owns land, and involve communities when discussing land management issues.
- Work to identify existing Wildlife Division lands that could be considered surplus to its mission and potentially available for disposal via exchange or sale.
- Utilize carefully evaluated land exchanges above the sale of surplus lands to improve management efficiency and effectiveness in addition to ensuring overall wildlife conservation values and public use opportunities are maintained.
- Ensure compliance with all applicable state and federal laws, rules, regulations, and policies regarding disposal of Wildlife Division lands.
- Only consider accepting land donations that serve its mission, meet or exceed standards for state ownership, and do not impose significant management, liability, or financial concerns on the Wildlife Division.

License Sales Totals

(as of Feb 25)

date updated: 25 Feb 2016

Resident	2016	2015
Combination	17,932	15,565
Junior Combination	1,238	1,029
Senior Combination	3,709	3,117
Small Game	913	847
Youth Small Game	380	378
1-Day Small Game	216	181
Migratory Bird Certificate	8,075	7,839
Predator/Varmint	855	624
Furbearer	1,727	1,797
Annual Fishing	8,699	7,213
Senior Fishing	2,378	1,968
1-Day Fishing	297	291
Gamefish Spearing/Archery	1,171	1,129

Nonresident	2016	2015
Small Game	2,711	2,736
Youth Small Game	196	169
Annual Shooting Preserve	43	46
5-day Shooting Preserve	387	338
1-day Shooting Preserve	233	174
Spring Light Goose	228	136
Youth Spring Light Goose	7	1
Migratory Bird Certificate	35	2
Predator/Varmint	585	570
Furbearer	2	3
Annual Fishing	6,432	4,996
Family Fishing	1,869	1,624
Youth Annual Fishing	351	170
3-Day Fishing	3,287	2,676
1-Day Fishing	1,523	1,328
Gamefish Spearing/Archery	360	278
TOTAL ON FILE =	65,839	57,225