

Statewide Combined Deer Harvest

There were 54,241 resident deer licenses (plus unlimited licenses) available in 2016 and 93,417 were issued. Nonresidents had 2,434 licenses (plus unlimited licenses) available and 7,763 were issued. Statewide, there were a total of 101,180 licenses sold that represented a total of 122,446 tags, an increase in 1,844 licenses and 11,396 tags from 2015. Triple-tag licenses were offered again for the East River season after eliminating them in 2014. A total of 67,615 individual hunters were issued deer licenses in 2016, up slightly from 67,395 in 2015.

Random samplings were taken for each unit within each season unless the numbers of hunters were low enough that all were sampled to satisfy the statistical analyses. Response rates ranged from 65% for Landowner Free Antlerless to 90% for Custer State Park.

The projected statewide deer harvest was 53,027, a 0.8% increase from 2015. This estimate included 27,869 whitetail bucks, 18,661 whitetail does, 5,301 mule bucks and 1,195 mule does. A slight increase in overall harvest of 438 deer with a moderate increase in the number of tags issued resulted in a 4% decrease in harvest success from 2015.

Increases in mule deer buck and white-tailed doe harvest along with a decrease in white-tailed buck harvest accounted for the slight increase in overall harvest from 2015. Both whitetail and mule doe harvest estimates increased from 2016 by 2,664 and 178 respectively. Mule buck harvest increased from 2015 by 413, while white-tailed deer harvest decreased by 2,818. Mule deer made up approximately 12% of the total harvest.

The 2016 overall statewide harvest success decreased significantly to 43% from 47% in 2015. Harvest success ranged from 27% for Archery to 81% for West River Special Buck.

Respondents reported hunting an average of 5.14 days per hunter, which projects to a statewide total of 520,272 recreation days in 2016. A decrease in days hunted combined with only a slight increase in license sales resulted in a decrease of approximately 6,400 total days of recreation from 2015.

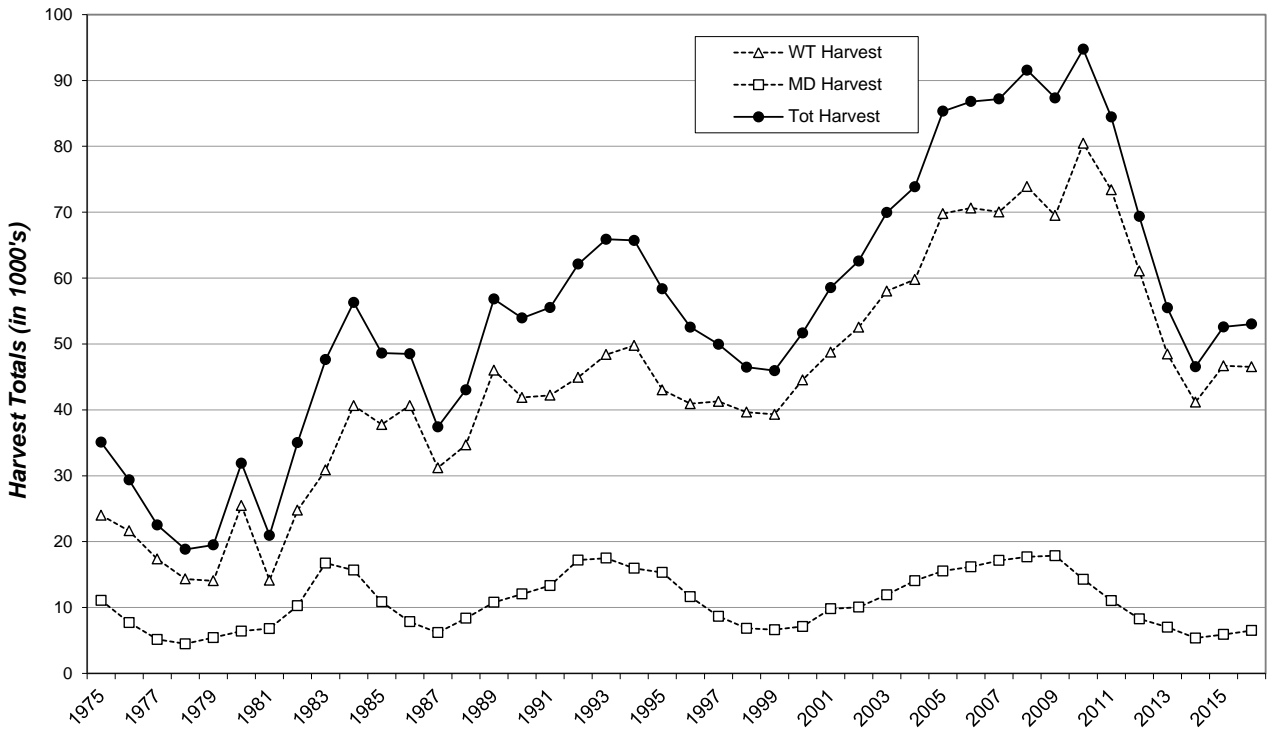
Average hunter satisfaction values (1=very dissatisfied to 7=very satisfied) varied between seasons and ranged from 4.35 East River Landowner Own Land to 5.84 for Mentored Youth.

2016 Statewide Deer Harvest Projection Summary

last revised: 1 May 2017

SOUTH DAKOTA Harvest Statistic	Season	Archery	Youth Antlerless	Mentored Youth	Muzzleloader	Landowner Own Land Antlerless	West River	West River Landowner Own Land	West River Special Buck Unit	East River	East River Landowner Own Land	East River Special Buck Unit	Refuges			Black Hills	Custer State Park	Grand Totals
													Sand Lake NWR	Lacreek NWR	Waubay NWR			
Licenses/Tags																		
Resident Licenses																		
Available	Unlimited	Unlimited	Unlimited	Unlimited	Unlimited	19,765	Unlimited	500	29,080	Unlimited	556	150	20	30	4,100	40	54,241	
Sold	24,531	4,316	3,646	2,914	628	19,221	2,256	497	25,479	5,020	549	150	20	30	4,120	40	93,417	
Resident Tags																		
Available	Unlimited	Unlimited	Unlimited	Unlimited	Unlimited	25,185	Unlimited	500	42,055	Unlimited	556	150	20	30	4,100	40	72,636	
Sold	24,531	4,316	3,646	2,914	628	24,410	3,658	497	35,809	7,953	549	150	20	30	4,120	40	113,271	
Nonresident Licenses																		
Available	Unlimited	Unlimited	N/A	Unlimited	N/A	1,585	N/A	500	Leftovers	N/A	N/A	15	3	3	328	N/A	2,434	
Sold	3,474	545	N/A	134	N/A	2,016	N/A	494	759	N/A	N/A	13	0	3	325	N/A	7,763	
Nonresident Tags																		
Available	Unlimited	Unlimited	N/A	Unlimited	N/A	2,019	N/A	500	Leftovers	N/A	N/A	15	3	3	328	N/A	2,868	
Sold	3,474	545	N/A	134	N/A	2,592	N/A	494	1,595	N/A	N/A	13	0	3	325	N/A	9,175	
Total Licenses																		
Available	Unlimited	Unlimited	Unlimited	Unlimited	Unlimited	21,350	Unlimited	1,000	29,080	Unlimited	556	165	23	33	4,428	40	56,675	
Sold	28,005	4,861	3,646	3,048	628	21,237	2,256	991	26,238	5,020	549	163	20	33	4,445	40	101,180	
Total Tags																		
Available	Unlimited	Unlimited	Unlimited	Unlimited	Unlimited	27,204	Unlimited	1,000	42,055	Unlimited	556	165	23	33	4,428	40	75,504	
Sold	28,005	4,861	3,646	3,048	628	27,002	3,658	991	37,404	7,953	549	163	20	33	4,445	40	122,446	
Hunters																		
Available	Unlimited	Unlimited	Unlimited	Unlimited	Unlimited	19,973	Unlimited	991	25,734	5,020	549	163	20	33	4,445	40	67,615	
Sold	22,131	4,861	3,646	2,983	522	19,973	2,256	991	25,734	5,020	549	163	20	33	4,445	40	67,615	
Recreation																		
Average Days Hunted	10.80	4.15	3.57	4.02	3.54	3.25	4.01	3.52	4.16	4.49	5.09	2.60	2.50	2.29	4.38	2.31	5.14	
Total Days Hunted	239,072	20,187	13,001	11,985	4,182	64,821	9,036	3,491	109,023	22,552	2,796	423	50	76	19,484	92	520,272	
Mean Satisfaction Score	5.06	5.65	5.84	5.01	5.15	5.13	5.24	5.79	4.70	4.35	5.03	4.81	5.58	5.15	5.76	5.81		
Harvest																		
White-tailed Deer																		
Bucks	4,781	322	287	333	36	7,600	851	338	8,675	1,696	289	33	7	8	2,605	10	27,869	
Does	1,987	1,896	1,495	699	264	3,557	247	1	7,133	835	4	16	1	1	505	19	18,661	
Total	6,768	2,218	1,782	1,032	300	11,157	1,098	339	15,808	2,531	292	49	8	10	3,110	29	46,531	
Mule Deer																		
Bucks	824	29	30	89	0	2,869	556	459	279	55	24	0	0	0	86	0	5,301	
Does	88	323	301	5	3	256	93	5	77	41	0	0	0	0	2	0	1,195	
Total	912	353	331	94	3	3,126	650	464	356	95	24	0	0	0	88	0	6,497	
Total Deer Harvest																		
Bucks	5,604	351	317	423	36	10,470	1,407	797	8,954	1,751	313	33	7	8	2,691	10	33,171	
Does	2,075	2,219	1,797	704	267	3,813	340	6	7,209	876	4	16	1	1	508	19	19,857	
Total	7,680	2,571	2,114	1,127	303	14,283	1,747	803	16,163	2,627	317	49	8	10	3,198	29	53,027	
Success																		
	27%	53%	58%	37%	48%	53%	48%	81%	43%	33%	58%	30%	40%	29%	72%	72%	43%	

South Dakota's Combined Deer Harvest 1975-2016



South Dakota Combined Deer Licensing 1975-2016

