

# **NATIONAL WILDLIFE REFUGE DEER**

There were a total of 219 licenses issued for the 2016 Wildlife Refuge Deer seasons, which included 163 at Sand Lake (150 residents and 13 nonresidents); 23 at Lacreek (20 residents and 3 nonresidents); and 33 at Waubay (30 residents and 3 nonresidents).

All license-holders for each season were surveyed and response rates for Sand Lake, Lacreek, and Waubay refuges were 81%, 78%, and 73%, respectively. Approximately 65% of survey respondents did so through the Internet.

The seasons had different opening dates at each refuge. The average days hunted were 2.60 at Sand Lake, 2.50 at Lacreek and 2.29 at Waubay.

The reported harvest at the refuges consisted of only white-tailed deer. The projected harvest for Sand Lake was 33 bucks and 16 does, for Lacreek was 7 bucks and 1 doe, and for Waubay was 8 bucks and 1 doe. The projected success rate for Sand Lake was 30%, for Lacreek was 34%, and for Waubay was 29%.

## **Harvest summaries for 2007-2016 National Wildlife Refuge Deer Seasons**

### **Sand Lake National Wildlife Refuge**

<b>YEAR</b>	<b>LICENSES</b>	<b>BUCKS</b>	<b>DOES</b>	<b>% SUCCESS</b>	<b>AVG DAYS HUNTED</b>
2007	436	112	94	36%	2.68
2008	399	99	135	29%	3.39
2009	275	67	76	26%	2.88
2010	272	64	63	23%	2.86
2011	220	33	59	21%	3.30
2012	128	35	11	36%	2.54
2013	132	42	22	48%	2.48
2014	133	50	5	42%	2.34
2015	165	52	10	37%	2.89
2016	163	33	16	30%	2.60

### **Lacreek National Wildlife Refuge**

<b>YEAR</b>	<b>LICENSES</b>	<b>BUCKS</b>	<b>DOES</b>	<b>% SUCCESS</b>	<b>AVG DAYS HUNTED</b>
2007	43	16	6	51%	2.78
2008	43	11	6	40%	2.43
2009	43	19	4	52%	2.61
2010	46	16	10	57%	2.46
2011	45	16	9	45%	2.93
2012	48	14	19	47%	2.38
2013	48	11	4	22%	1.97
2014	34	8	0	24%	3.10
2015	34	12	0	35%	2.71
2016	23	7	1	34%	2.50

### **Waubay National Wildlife Refuge**

<b>YEAR</b>	<b>LICENSES</b>	<b>BUCKS</b>	<b>DOES</b>	<b>% SUCCESS</b>	<b>AVG DAYS HUNTED</b>
2007	71	19	13	33%	2.07
2008	66	17	5	33%	2.29
2009	66	16	9	38%	2.23
2010	66	17	8	37%	2.22
2011	64	9	7	25%	3.82
2012	51	17	2	38%	1.76
2013	51	15	1	31%	1.71
2014	33	8	2	32%	1.54
2015	33	8	0	24%	2.10
2016	33	8	1	29%	2.29

## 2016 Sand Lake Refuge Deer Harvest Projections

Last Revised:

30-Mar-17

Unit/Type	Licenses							Harvest Projections							
	Resident			Nonresident			Response Rate	Tag Success	Whitetail				Total Deer Harvested	Mean Satisf Score	Avg Days Hunted
	Appl. 1st		Sold	Appl. 1st		Sold			Bucks		Does				
	Choice *	Available		Choice *	Available		Adult	Fawn	Adult	Fawn					
SL1-01	160	20	20	17	2	2	77%	53%	12	0	0	0	12	4.94	3.18
SL1-03	1	10	11	0	1	0	82%	22%	0	0	2	0	2	5.13	3.00
SL2-01	184	20	20	18	2	2	81%	35%	6	0	1	0	8	4.81	3.00
SL2-03	5	10	9	1	1	1	89%	13%	0	0	1	0	1	4.00	2.38
SL3-01	79	20	20	9	2	2	73%	25%	3	1	1	0	6	4.47	2.94
SL3-03	5	10	10	1	1	1	91%	40%	0	2	2	0	4	4.89	2.10
SL4-01	27	20	20	5	2	2	91%	15%	1	0	2	0	3	4.75	2.45
SL4-03	1	10	10	0	1	1	82%	33%	0	1	1	1	4	4.60	1.33
SL5-01	74	20	20	6	2	1	86%	33%	6	0	1	0	7	5.67	2.56
SL5-03	4	10	10	2	1	1	64%	14%	0	0	2	0	2	4.00	2.00
<b>Licenses</b>	<b>540</b>	<b>150</b>	<b>150</b>	<b>59</b>	<b>15</b>	<b>13</b>	<b>81.4%</b>	<b>30%</b>	<b>28</b>	<b>5</b>	<b>15</b>	<b>1</b>	<b>49</b>	<b>4.81</b>	<b>2.60</b>

## 2016 Lacreek Refuge Deer Harvest Projections

Unit/Type	Licenses							Harvest Projections							
	Resident			Nonresident			Response Rate	Tag Success	Whitetail				Total Deer Harvested	Mean Satisf Score	Avg Days Hunted
	Appl. 1st		Sold	Appl. 1st		Sold			Bucks		Does				
	Choice *	Available		Choice *	Available		Adult	Fawn	Adult	Fawn					
LC1-01	166	5	5	5	1	1	50%	0%	0	0	0	0	0	6.00	3.00
LC2-01	278	15	15	19	2	2	88%	47%	7	0	0	1	8	5.50	2.40
<b>Licenses</b>	<b>444</b>	<b>20</b>	<b>20</b>	<b>24</b>	<b>3</b>	<b>3</b>	<b>78.3%</b>	<b>34%</b>	<b>7</b>	<b>0</b>	<b>0</b>	<b>1</b>	<b>8</b>	<b>5.58</b>	<b>2.50</b>

All units require the use of muzzleloader firearms.

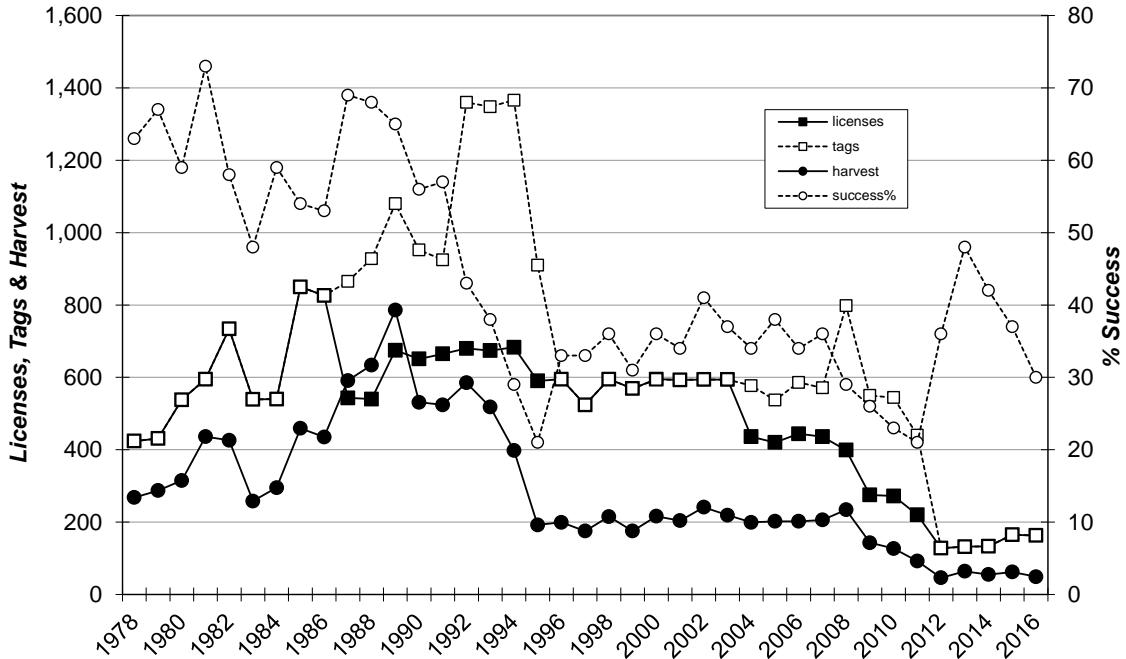
## 2016 Waubay Refuge Deer Harvest Projections

Unit/Type	Licenses							Harvest Projections							
	Resident			Nonresident			Response Rate	Tag Success	Whitetail				Total Deer Harvested	Mean Satisf Score	Avg Days Hunted
	Appl. 1st		Sold	Appl. 1st		Sold			Bucks		Does				
	Choice *	Available		Choice *	Available		Adult	Fawn	Adult	Fawn					
WA1-01	73	10	10	5	1	1	73%	38%	4	0	0	0	4	5.38	3.38
WA2-01	22	10	10	0	1	1	73%	0%	0	0	0	0	0	4.75	2.25
WA3-01	67	10	10	2	1	1	73%	50%	4	0	1	0	6	5.33	1.25
<b>Licenses</b>	<b>162</b>	<b>30</b>	<b>30</b>	<b>7</b>	<b>3</b>	<b>3</b>	<b>72.7%</b>	<b>29%</b>	<b>8</b>	<b>0</b>	<b>1</b>	<b>0</b>	<b>10</b>	<b>5.15</b>	<b>2.29</b>

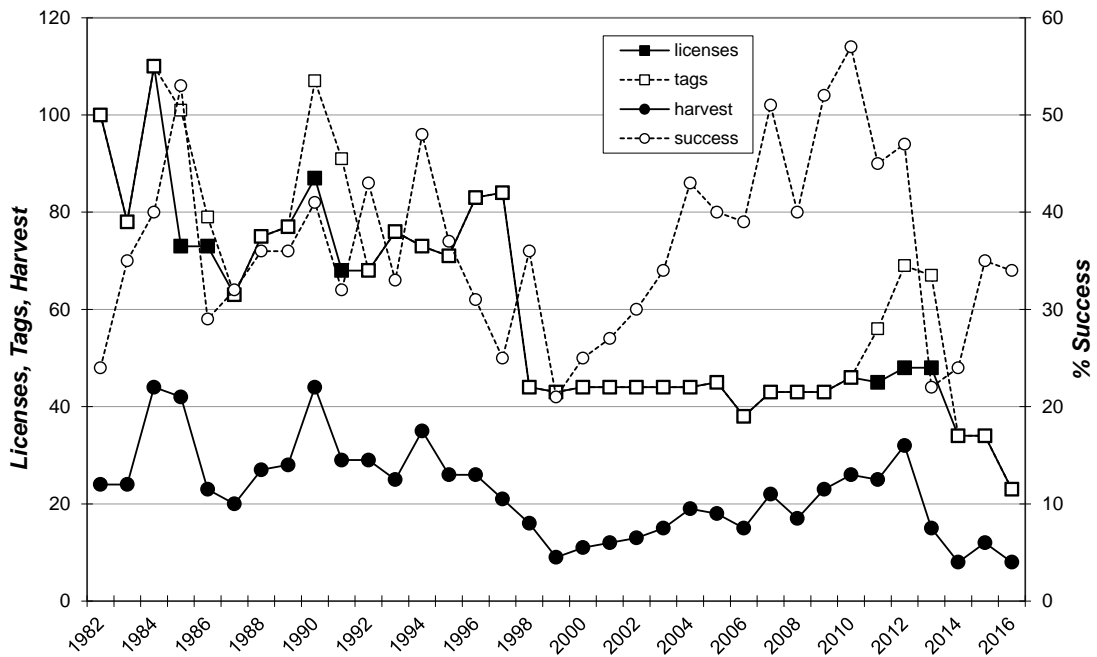
Response rate for all units combined was: **79.7%**

\* Number of 1st drawing applicants with that season as 1st choice.

### Sand Lake National Wildlife Refuge 1978-2016



### Lacreek National Wildlife Refuge 1982-2016



## Waubay National Wildlife Refuge 1987-2016

