

BLACK HILLS DEER

There were 4,445 single-tag licenses issued for the 2016 Black Hills Deer season (4,120 resident, 325 nonresident).

A random sample of 1,661 hunters was taken (37% of license holders) and there were 1,325 responses for an 80% return rate. Approximately 70% of responses were received through the Internet.

The season ran the month of November, a total of 30 days. Those responding reported hunting an average of 4.38 days, which projected to 19,484 recreation days for the season.

The mean satisfaction score for all combined units was 5.76 on a scale ranging from 1 = "very dissatisfied" to 7 = "very satisfied".

The harvest projection for the Black Hills Deer season was 3,198 deer (2,508 adult whitetail bucks, 96 fawn whitetail bucks, 456 adult whitetail does, 49 fawn whitetail does, 86 adult mule deer bucks, and 2 adult mule deer does). The overall season harvest success rate was 72%.

Including the estimated Black Hills harvest of 1,818 deer from the Archery, Youth, Mentored Youth, and Muzzleloader seasons, approximately 5,016 deer were harvested in the Black Hills proper.

Harvest summaries for the 2008-2016 Black Hills Deer seasons

YEAR	Licenses Sold		Harvest				Total	Success	Avg Days Hunted	Avg Satis
	Resident	Nonres	Bucks		Does					
			WT	Mule	WT	Mule				
2008	8,451	722	2,620	138	1,824	56	4,638	51%	4.08	5.11
2009	7,218	613	2,450	134	1,122	74	3,781	48%	4.75	4.53
2010	4,938	389	2,300	101	599	16	3,017	57%	4.58	5.07
2011	4,137	329	2,011	107	401	10	2,530	57%	4.78	4.89
2012	3,337	243	2,008	88	289	6	2,391	67%	4.23	5.22
2013	3,330	261	1,912	62	318	2	2,294	64%	4.68	5.27
2014	3,242	252	2,076	59	275	0	2,410	69%	4.82	5.48
2015	3,741	294	2,533	74	307	2	2,917	72%	4.61	5.75
2016	4,120	325	2,604	86	505	2	3,198	72%	4.38	5.76

2016 Black Hills Deer Harvest Projections

Last Revised: 2-Mar-17

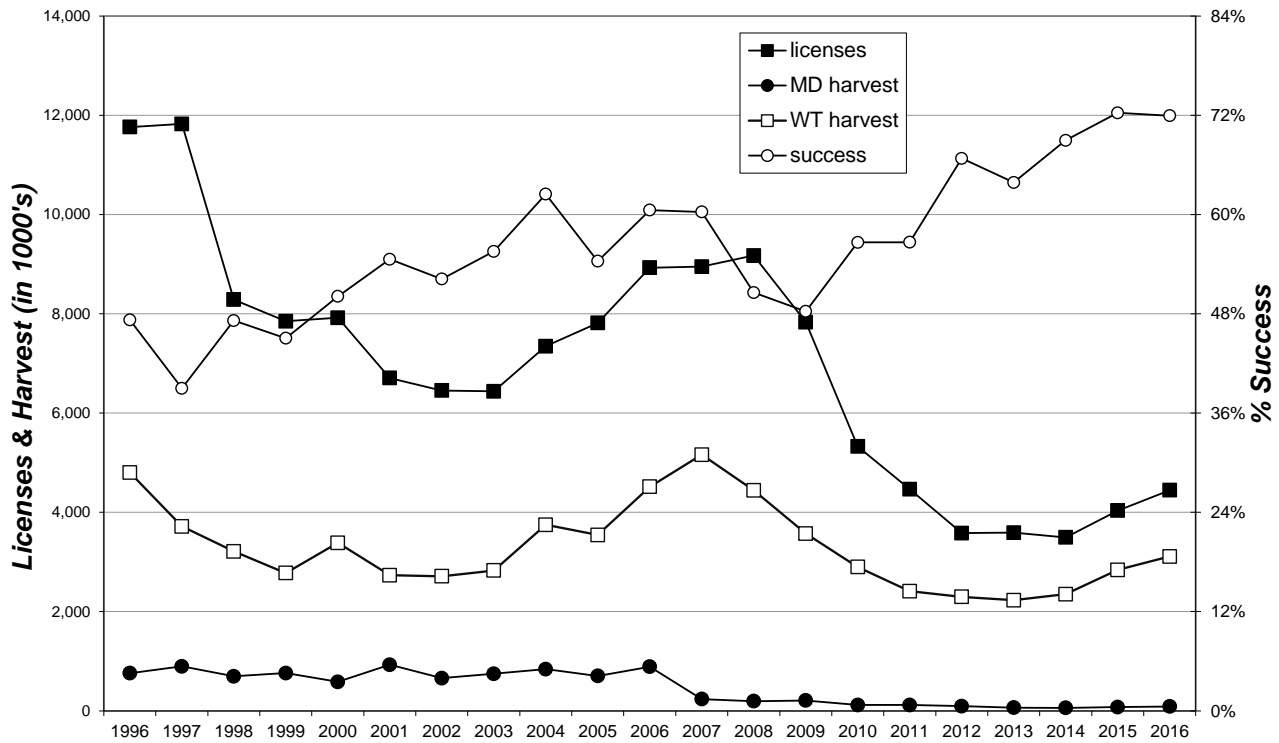
Unit/Type	Licenses						Harvest Projections										Mean Satisfctn	Avg Days Hunted		
	Resident			Nonresident			Resp.	Success	Whitetail				Mule Deer						Total Deer	
	Appl. 1st	Choice *	Avail.	Appl. 1st	Choice *	Avail.			Sold	Bucks	Does	Adult	Fawn	Adult	Fawn	Adult				Fawn
BH1-01	4,278	200	223	336	16	16	83%	71%	76	0	5	0	86	0	2	0	169	+/-7	5.64	5.63
BH1-11	8,565	3,500	3,498	816	280	277	79%	73%	2,424	58	240	29	0	0	0	0	2,751	+/-105	5.79	4.79
BD1-13	142	300	299	19	24	24	81%	67%	6	31	161	17	0	0	0	0	216	+/-8	5.55	2.94
BD2-13	90	100	100	5	8	8	80%	58%	3	8	50	3	0	0	0	0	63	+/-5	5.61	2.22
Totals	13,075	4,100	4,120	1,176	328	325	79.8%	72%	2,508	96	456	49	86	0	2	0	3,198	+/-124	5.76	4.38

The response rate for all units combined is: **79.8%**

Satisfaction scale of 1=very dissatisfied to 7=very satisfied.

* Number of 1st drawing applicants with that season as 1st choice.

Black Hills Deer 1996-2016



Black Hills Deer Harvest 1996-2016

