

# **PRAIRIE CHICKEN & SHARP-TAILED GROUSE**

Historically, these two species, plus ruffed grouse, have been combined under the name "Prairie Grouse." In these reports, harvest estimates for these species were combined. In 2006, hunters were asked specifically how many of each species were harvested of the total harvest and 76% were identified as sharp-tailed grouse, 20% as prairie chickens, and 4% were unknown. They continue to be combined for the overall harvest estimates in this report.

The 2016 grouse season covered 17 September 2016 – 1 January 2017 statewide. Harvest surveys were sent to both resident and nonresident hunters. The daily limit was 3 birds, possession 15. To hunt grouse residents required to hold small game, 1-day small game, adult, senior or junior combination, or youth small game licenses; nonresidents were required to obtain adult or youth small game or nonresident shooting preserve licenses. Harvest surveys were sent to both resident and nonresident hunters. No shooting preserve license holders were surveyed and none of their harvest is included in any of the data in this report.

In 2016, there were 90,541 resident and 85,405 nonresident licenses issued that allowed holders to hunt grouse. Approximately 10% of residents and nonresidents were surveyed for the upland bird seasons. Survey response rates were 59% for residents and 64% for nonresidents.

Based on survey responses indicating at least one day of hunting grouse, there were a projected 7,199 resident and 5,203 nonresident grouse hunters. A projected total of 42,905 grouse were harvested (31,611 by residents, 11,294 by nonresidents) during the 2016 season.

When asked their satisfaction on the season, (1 being very dissatisfied, and 7 being very satisfied), resident upland bird hunters reported an average rating of 4.72 while nonresidents reported a rating of 5.43.

## Comparison of the 2007 - 2016 prairie grouse season statistics

Year	Residents					Nonresidents				
	Hunters	Harvest	Ave Day Hunted	Ave Bag	Satisfaction	Hunters	Harvest	Ave Day Hunted	Ave Bag	Satisfaction
2007	6,164	23,177	4.37	3.76	5.39	4,663	10,865	3.70	2.33	6.00
2008	7,044	34,023	4.46	4.83	5.31	5,383	13,458	4.26	2.50	5.86
2009	6,377	26,018	4.41	4.08	4.93	4,571	12,662	4.19	2.77	5.59
2010	7,879	39,868	4.49	5.06	5.20	5,386	17,020	3.92	3.16	5.88
2011	6,789	27,581	4.19	4.09	4.78	6,407	20,718	4.01	3.26	5.63
2012	7,197	31,223	4.68	4.38	4.65	7,037	19,005	3.83	2.70	5.14
2013	7,149	19,858	4.28	2.76	4.11	4,523	7,840	3.87	1.73	4.95
2014	6,503	25,847	4.55	4.01	4.85	4,254	9,943	3.99	2.31	5.52
2015	7,866	34,506	4.72	4.40	4.98	5,032	15,388	4.05	3.08	5.49
2016	7,199	31,611	4.88	4.40	4.72	5,203	11,294	4.04	2.18	5.43

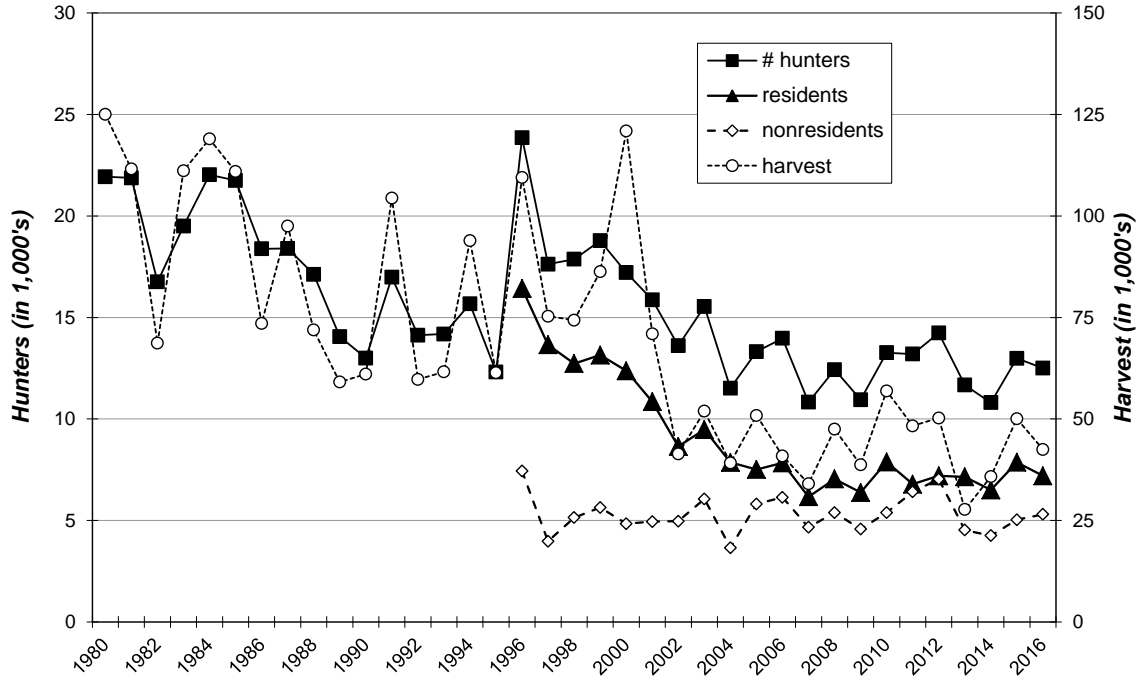
## PRAIRIE GROUSE HARVEST PROJECTIONS FOR 2016

Revised: 18 May 2017

	RESIDENT TOTALS BY LICENSE TYPE						NONRESIDENT TOTALS		
	Small Game	Combo	Senior Combo	Junior Combo	Youth SmGm	Sum Estimates	Nonres Sm Game	Youth Sm Game	Sum Estimates
<b>Licenses Sold</b>	21,164	47,929	8,434	8,164	4,850	<b>90,541</b>	82,959	2,446	<b>85,405</b>
<b>Projected ACTIVE UPLAND BIRD HUNTERS</b>	<b>17,352</b>	<b>32,031</b>	<b>4,994</b>	<b>4,248</b>	<b>3,800</b>	<b>62,425</b>	<b>79,380</b>	<b>2,209</b>	<b>81,589</b>
Number Sampled by Survey	1,707	4,107	770	659	406	<b>7,649</b>	7,585	201	<b>7,786</b>
Number Responded to Survey	855	2,463	662	271	231	<b>4,482</b>	4,897	100	<b>4,997</b>
% Responded and Participated in Season	82%	67%	59%	52%	78%	68%	98%	92%	98%
Responded and Participated in Season	701	1,646	392	141	181	<b>3,061</b>	4,782	92	<b>4,874</b>
Responded but DID NOT HUNT	154	817	270	130	50	<b>1,421</b>	115	8	<b>123</b>
<b>Survey Response Rate</b>	<b>50.1%</b>	<b>60.0%</b>	<b>86.0%</b>	<b>41.1%</b>	<b>56.9%</b>	<b>58.6%</b>	<b>64.6%</b>	<b>49.8%</b>	<b>64.2%</b>
No. Hunters Reporting Prairie Grouse Days	48	245	40	16	12	<b>361</b>	299	10	<b>309</b>
Sum Prairie Grouse Hunted Days	202	1,253	197	57	53	<b>1,762</b>	1,215	34	<b>1,249</b>
Average Days Hunted Prairie Grouse	<b>4.21</b>	<b>5.11</b>	<b>4.93</b>	<b>3.56</b>	<b>4.42</b>	<b>4.88</b>	<b>4.06</b>	<b>3.40</b>	<b>4.04</b>
Sum Prairie Grouse Bagged	124	1,177	148	89	51	<b>1,589</b>	663	12	<b>675</b>
Average Season Prairie Grouse Bag	<b>2.58</b>	<b>4.80</b>	<b>3.70</b>	<b>5.56</b>	<b>4.25</b>	<b>4.40</b>	<b>2.22</b>	<b>1.20</b>	<b>2.18</b>
<b>Projected Days Prairie Grouse Hunting</b>	<b>5,000</b>	<b>24,383</b>	<b>2,510</b>	<b>1,717</b>	<b>1,113</b>	<b>34,723</b>	<b>20,169</b>	<b>816</b>	<b>20,985</b>
<b>Projected No. Prairie Grouse Hunters</b>	<b>1,188</b>	<b>4,768</b>	<b>510</b>	<b>482</b>	<b>252</b>	<b>7,199</b>	<b>4,963</b>	<b>240</b>	<b>5,203</b>
<b>Projected Prairie Grouse Bag</b>	<b>3,069</b>	<b>22,904</b>	<b>1,886</b>	<b>2,681</b>	<b>1,071</b>	<b>31,611</b>	<b>11,006</b>	<b>288</b>	<b>11,294</b>
						<b>TOTAL PRAIRIE GROUSE HARVEST =</b>	<b>42,905</b>		
<b>Upland Bird Hunters Mean Satisfaction Score *</b>	4.75	4.72	4.57	4.78	4.89	4.72	5.44	5.21	5.43

\* Based on scale of 1-7 with 1="very dissatisfied" and 7="very satisfied"

## PRAIRIE GROUSE HUNTERS & HARVEST 1980-2016



## Resident Grouse Harvest Distribution by County 2016

COUNTY	HUNTER DISTRIBUTION				HARVEST DISTRIBUTION				Birds/Hunter
	# Reported	# Projected	% of Total	# Proj w/Unk *	# Reported	# Projected	% of Total	# Proj w/Unk *	
Minnehaha	1	20	0.3	21	0	0	0.0	0	0.0
Pennington	18	359	5.2	371	78	1,552	5.1	1,606	4.3
Brown	1	20	0.3	21	1	20	0.1	21	1.0
Beadle	2	40	0.6	41	1	20	0.1	21	0.5
Codington	0	0	0.0	0	0	0	0.0	0	0
Brookings	0	0	0.0	0	0	0	0.0	0	0
Yankton	0	0	0.0	0	0	0	0.0	0	0
Davison	1	20	0.3	21	6	119	0.4	124	6.0
Lawrence	2	40	0.6	41	0	0	0.0	0	0.0
Aurora	0	0	0.0	0	0	0	0.0	0	0
Bennett	11	219	3.2	227	77	1,532	5.0	1,586	7.0
Bon Homme	1	20	0.3	21	0	0	0.0	0	0.0
Brule	3	60	0.9	62	9	179	0.6	185	3.0
Buffalo	4	80	1.1	83	5	99	0.3	103	1.2
Butte	3	60	0.9	62	0	0	0.0	0	0.0
Campbell	0	0	0.0	0	0	0	0.0	0	0
Charles Mix	8	160	2.3	165	21	418	1.4	432	2.6
Clark	1	20	0.3	21	1	20	0.1	21	1.0
Clay	0	0	0.0	0	0	0	0.0	0	0
Corson	10	199	2.9	206	40	796	2.6	824	4.0
Custer	3	60	0.9	62	5	99	0.3	103	1.7
Day	2	40	0.6	41	2	40	0.1	41	1.0
Deuel	1	20	0.3	21	0	0	0.0	0	0.0
Dewey	9	179	2.6	186	27	537	1.8	556	3.0
Douglas	3	60	0.9	62	2	40	0.1	41	0.7
Edmunds	0	0	0.0	0	0	0	0.0	0	0
Fall River	5	100	1.4	103	8	159	0.5	165	1.6
Faulk	2	40	0.6	41	10	199	0.7	206	5.0
Grant	4	80	1.1	83	2	40	0.1	41	0.5
Gregory	15	299	4.3	309	45	895	2.9	927	3.0
Haakon	13	259	3.7	268	51	1,015	3.3	1,050	3.9
Hamlin	0	0	0.0	0	0	0	0.0	0	0
Hand	4	80	1.1	83	18	358	1.2	371	4.5
Hanson	0	0	0.0	0	0	0	0.0	0	0
Harding	14	279	4.0	289	42	836	2.7	865	3.0
Hughes	11	219	3.2	227	41	816	2.7	844	3.7
Hutchinson	0	0	0.0	0	0	0	0.0	0	0
Hyde	2	40	0.6	41	6	119	0.4	124	3.0
Jackson	2	40	0.6	41	5	99	0.3	103	2.5
Jerauld	2	40	0.6	41	2	40	0.1	41	1.0
Jones	7	140	2.0	144	46	915	3.0	947	6.6
Kingsbury	2	40	0.6	41	12	239	0.8	247	6.0
Lake	3	60	0.9	62	13	259	0.8	268	4.3
Lincoln	0	0	0.0	0	0	0	0.0	0	0
Lyman	12	239	3.4	248	54	1,074	3.5	1,112	4.5
McCook	1	20	0.3	21	0	0	0.0	0	0.0
McPherson	3	60	0.9	62	10	199	0.7	206	3.3
Marshall	3	60	0.9	62	4	80	0.3	82	1.3
Meade	29	578	8.3	598	196	3,899	12.8	4,036	6.7
Mellette	13	259	3.7	268	71	1,412	4.6	1,462	5.4
Miner	0	0	0.0	0	0	0	0.0	0	0
Moody	0	0	0.0	0	0	0	0.0	0	0
Perkins	40	798	11.5	825	262	5,212	17.1	5,395	6.5
Potter	5	100	1.4	103	16	318	1.0	329	3.2
Roberts	1	20	0.3	21	0	0	0.0	0	0.0
Sanborn	0	0	0.0	0	0	0	0.0	0	0
Spink	0	0	0.0	0	0	0	0.0	0	0
Stanley	39	778	11.2	805	157	3,123	10.2	3,233	4.0
Sully	8	160	2.3	165	77	1,532	5.0	1,586	9.6
Tripp	9	179	2.6	186	29	577	1.9	597	3.2
Turner	1	20	0.3	21	0	0	0.0	0	0.0
Union	0	0	0.0	0	0	0	0.0	0	0
Walworth	4	80	1.1	83	4	80	0.3	82	1.0
Ziebach	5	100	1.4	103	61	1,214	4.0	1,256	12.2
Shannon	2	40	0.6	41	0	0	0.0	0	0.0
Todd	4	80	1.1	83	18	358	1.2	371	4.5
Unknown	12	239	-	-	54	1,074	-	-	4.5
<b>TOTALS:</b>	<b>361</b>	<b>7,199</b>	<b>100.0%</b>	<b>7,199</b>	<b>1,589</b>	<b>31,611</b>	<b>100%</b>	<b>31,611</b>	<b>4.39</b>

Last Revised: 27 June 2017

\* Includes unknown county projection values by assuming unknown county values are distributed the same as reported county values. Total values may be different due to rounding.

\*\* Calculation uses "#projected" values without correction for unknown/unreported county values.

## Nonresident Grouse Harvest Distribution by County 2016

COUNTY	HUNTER DISTRIBUTION				HARVEST DISTRIBUTION				Birds/Hunter
	# Reported	# Projected	% of Total	# Proj w/ Unk *	# Reported	# Projected	% of Total	# Proj w/ Unk *	
Minnehaha	1	17	0.3	17	0	0	0.0	0	0.0
Pennington	2	34	0.7	34	3	50	0.5	51	1.5
Brown	3	51	1.0	52	6	100	0.9	102	2.0
Beadle	0	0	0.0	0	0	0	0.0	0	0
Codington	0	0	0.0	0	0	0	0.0	0	0
Brookings	1	17	0.3	17	0	0	0.0	0	0.0
Yankton	0	0	0.0	0	0	0	0.0	0	0
Davison	1	17	0.3	17	0	0	0.0	0	0.0
Lawrence	0	0	0.0	0	0	0	0.0	0	0
Aurora	0	0	0.0	0	0	0	0.0	0	0
Bennett	8	135	2.6	138	8	134	1.2	136	1.0
Bon Homme	1	17	0.3	17	0	0	0.0	0	0.0
Brule	7	118	2.3	121	12	201	1.8	204	1.7
Buffalo	2	34	0.7	34	7	117	1.1	119	3.5
Butte	1	17	0.3	17	1	17	0.2	17	1.0
Campbell	3	51	1.0	52	6	100	0.9	102	2.0
Chas Mix	2	34	0.7	34	6	100	0.9	102	3.0
Clark	2	34	0.7	34	2	33	0.3	34	1.0
Clay	0	0	0.0	0	0	0	0.0	0	0
Corson	14	236	4.6	241	35	586	5.3	595	2.5
Custer	0	0	0.0	0	0	0	0.0	0	0
Day	0	0	0.0	0	0	0	0.0	0	0
Deuel	0	0	0.0	0	0	0	0.0	0	0
Dewey	29	488	9.6	500	66	1,104	9.9	1,123	2.3
Douglas	0	0	0.0	0	0	0	0.0	0	0
Edmunds	3	51	1.0	52	1	17	0.2	17	0.3
Fall River	2	34	0.7	34	0	0	0.0	0	0.0
Faulk	2	34	0.7	34	3	50	0.5	51	1.5
Grant	0	0	0.0	0	0	0	0.0	0	0
Gregory	9	152	3.0	155	4	67	0.6	68	0.4
Haakon	7	118	2.3	121	9	151	1.4	153	1.3
Hamlin	1	17	0.3	17	6	100	0.9	102	6.0
Hand	10	168	3.3	172	10	167	1.5	170	1.0
Hanson	0	0	0.0	0	0	0	0.0	0	0
Harding	2	34	0.7	34	13	218	2.0	221	6.5
Hughes	14	236	4.6	241	20	335	3.0	340	1.4
Hutchinson	1	17	0.3	17	0	0	0.0	0	0.0
Hyde	6	101	2.0	103	9	151	1.4	153	1.5
Jackson	3	51	1.0	52	12	201	1.8	204	4.0
Jerauld	3	51	1.0	52	4	67	0.6	68	1.3
Jones	17	286	5.6	293	47	786	7.1	799	2.7
Kingsbury	0	0	0.0	0	0	0	0.0	0	0
Lake	0	0	0.0	0	0	0	0.0	0	0
Lincoln	0	0	0.0	0	0	0	0.0	0	0
Lyman	32	539	10.6	551	56	937	8.4	952	1.7
McCook	1	17	0.3	17	4	67	0.6	68	4.0
McPherson	5	84	1.7	86	11	184	1.7	187	2.2
Marshall	0	0	0.0	0	0	0	0.0	0	0
Meade	2	34	0.7	34	4	67	0.6	68	2.0
Mellette	7	118	2.3	121	11	184	1.7	187	1.6
Miner	0	0	0.0	0	0	0	0.0	0	0
Moody	0	0	0.0	0	0	0	0.0	0	0
Perkins	18	303	6.0	310	67	1,121	10.1	1,140	3.7
Potter	6	101	2.0	103	14	234	2.1	238	2.3
Roberts	1	17	0.3	17	1	17	0.2	17	1.0
Sanborn	0	0	0.0	0	0	0	0.0	0	0
Spink	2	34	0.7	34	2	33	0.3	34	1.0
Stanley	26	438	8.6	448	79	1,322	11.9	1,344	3.0
Sully	8	135	2.6	138	2	33	0.3	34	0.2
Tripp	18	303	6.0	310	44	736	6.6	748	2.4
Turner	0	0	0.0	0	0	0	0.0	0	0
Union	0	0	0.0	0	0	0	0.0	0	0
Walworth	7	118	2.3	121	9	151	1.4	153	1.3
Ziebach	7	118	2.3	121	34	569	5.1	578	4.8
Shannon	1	17	0.3	17	1	17	0.2	17	1.0
Todd	4	67	1.3	69	35	586	5.3	595	8.7
Unknown	7	118	-	-	11	184	-	-	1.6
<b>TOTALS:</b>	<b>309</b>	<b>5,203</b>	<b>100%</b>	<b>5,203</b>	<b>675</b>	<b>11,294</b>	<b>100%</b>	<b>11,294</b>	<b>2.17</b>

Last Revised: 27 June 2017

\* Includes unknown county projection values by assuming unknown county values are distributed the same as reported county values. Total values may be different due to rounding.

\*\* Calculation uses "# projected" values without correction for unknown/unreported county values.