

PHEASANT

The 2016 pheasant season was open from 15 October 2016 – 1 January 2017 statewide. There was also a Youth season open 1-5 October on public and private land and an early resident season open 8-10 October on public lands only. The daily limit was 3 cock pheasants, possession 15. To hunt pheasants, residents were required to hold small game, 1-day small game, adult, senior or junior combination, or youth small game licenses; nonresidents were required to obtain adult or youth small game or nonresident shooting preserve licenses. Harvest surveys were sent to both resident and nonresident hunters. No shooting preserve license holders were surveyed and none of their harvest is included in any of the data in this report.

In 2016, there were 90,541 resident and 85,405 nonresident licenses issued that allowed holders to hunt pheasants. Approximately 10% of residents and nonresidents were surveyed for the upland bird seasons. Survey response rates were 59% for residents and 64% for nonresidents.

Based on survey responses indicating at least one day of hunting pheasants, there were a projected 61,746 resident and 84,901 nonresident pheasant hunters.

A projected total of 1,170,596 pheasants were harvested (478,099 by residents, 692,497 by nonresidents) during the 2016 seasons. When asked their satisfaction on the season, (1 being least satisfied, 7 being most satisfied), resident upland bird hunters reported an average satisfaction rating of 4.72 while nonresidents reported a higher satisfaction rating of 5.43.

Approximately 18,646 residents participated in the early, resident-only season. The projected harvest for this season was 24,444 birds.

The Youth-only season overall participation rate was approximately 5.3%; nonresidents were not surveyed on their participation in this season.

The five counties with the highest reported harvests from highest to lowest were Brule, Tripp, Lyman, Brown, and Beadle.

Comparison of the 2007 - 2016 Pheasant season statistics

Year	Resident Hunters					Nonresident Hunters				
	Number Hunters	Harvest	Ave Day Hunted	Ave Bag	Satisfaction	Number Hunters	Harvest	Ave Day Hunted	Ave Bag	Satisfaction
2007	77,788	969,238	7.88	12.46	5.39	103,048	1,153,107	4.61	11.19	6.00
2008	75,978	877,546	7.33	11.55	5.31	100,254	1,058,682	4.49	10.56	5.86
2009	69,949	715,578	7.14	10.23	4.93	97,350	932,613	4.33	9.58	5.59
2010	72,465	803,637	7.16	11.09	5.20	100,189	1,027,939	4.42	10.26	5.88
2011	69,120	644,412	6.83	9.68	4.78	95,077	910,894	4.46	9.63	5.63
2012	69,240	599,675	6.92	9.09	4.65	93,801	829,198	4.35	8.90	5.14
2013	57,647	368,567	6.33	7.15	4.11	74,413	561,445	3.99	7.74	4.95
2014	61,776	504,144	6.31	8.32	4.85	79,195	695,660	4.16	8.79	5.52
2015	65,135	517,942	6.17	8.06	4.98	84,901	737,936	4.15	8.71	5.49
2016	61,746	478,099	6.24	7.86	4.72	81,141	692,497	4.14	8.57	5.43

UPLAND BIRD HARVEST PROJECTIONS FOR 2016

Revised: 18 May 2017

	RESIDENT TOTALS BY LICENSE TYPE						NONRESIDENT TOTALS		
	Small Game	Combo	Senior Combo	Junior Combo	Youth SmGm	Sum Estimates	Nonres Sm Game	Youth Sm Game	Sum Estimates
Licenses Sold	21,164	47,929	8,434	8,164	4,850	90,541	82,959	2,446	85,405
Projected ACTIVE UPLAND BIRD HUNTERS	17,352	32,031	4,994	4,248	3,800	62,425	79,380	2,209	81,589
Number Sampled by Survey	1,707	4,107	770	659	406	7,649	7,585	201	7,786
Number Responded to Survey	855	2,463	662	271	231	4,482	4,897	100	4,997
% Responded and Participated in Season	82%	67%	59%	52%	78%	68%	98%	92%	98%
Responded and Participated in Season	701	1,646	392	141	181	3,061	4,782	92	4,874
Responded but DID NOT HUNT	154	817	270	130	50	1,421	115	8	123
Survey Response Rate	50.1%	60.0%	86.0%	41.1%	56.9%	58.6%	64.6%	49.8%	64.2%
No. Hunters Reporting Pheasant Days	697	1,625	389	138	179	3,028	4,755	92	4,847
Sum Pheasant Hunted Days	3,646	10,892	2,539	821	997	18,895	19,742	303	20,045
Average Days Hunted Pheasants	5.23	6.70	6.53	5.95	5.57	6.24	4.15	3.29	4.14
Sum Pheasants Bagged	4,195	14,339	3,089	1,079	1,113	23,815	41,065	451	41,516
Average Pheasant Bag for Season	6.02	8.82	7.94	7.82	6.22	7.86	8.64	4.90	8.57
Projected Days Pheasant Hunting	90,250	211,954	32,347	24,733	20,933	380,217	327,712	7,275	334,987
Projected No. Pheasant Hunters	17,253	31,622	4,956	4,157	3,758	61,746	78,932	2,209	81,141
Projected Pheasant Bag	103,840	279,031	39,354	32,505	23,368	478,099	681,669	10,829	692,497
LCI (95%)	92,119	261,073	33,848	24,183	16,288	453,121	667,781	8,699	678,403
UCI (95%)	115,745	297,238	45,062	41,363	30,601	503,118	695,573	13,013	706,552
TOTAL PHEASANT HARVEST =							1,170,596		
							LCI (95%) =	1,141,921	
							UCI (95%) =	1,199,298	
RESIDENT-ONLY OPENING WEEKEND:									
No. Hunters Reporting Pheasant Days	174	513	102	57	77	923	-	-	-
Sum Pheasant Hunted Days	113	326	62	42	53	596	-	-	-
Average Days Hunted Pheasants	0.65	0.64	0.61	0.74	0.69	0.65	-	-	-
Sum Pheasants Bagged	155	632	100	74	86	1,047	-	-	-
Average Pheasant Bag for Weekend	0.89	1.23	0.98	1.30	1.12	1.13	-	-	-
Projected Days Pheasant Hunting	2,797	6,344	790	1,265	1,113	12,040	-	-	-
Projected No. Pheasant Hunters	4,307	9,983	1,299	1,717	1,617	18,646	-	-	-
Projected Pheasant Bag	3,837	12,298	1,274	2,229	1,806	21,444	-	-	-
RESIDENT-ONLY WEEKEND PHEASANT HARVEST =							21,444		
MENTORED YOUTH PARTICIPATION:									
No. Hunters Reporting Participation	25	127	18	NA	NA	170	-	-	-
Projected No. Hunters Participating	619	2,471	229			3,320	-	-	-
Percent Hunters Participating	2.9%	5.2%	2.7%			4.3%	-	-	-
Upland Bird Hunters Mean Satisfaction Score *	4.75	4.72	4.57	4.78	4.89	4.72	5.44	5.21	5.43

* Based on scale of 1-7 with 1="very dissatisfied" and 7="very satisfied"

RESIDENT-ONLY WEEKEND 2016 PHEASANT SEASON PARTICIPATION AND BAG

Last Revised: 19 May 2017

	# Days Hunted	# Responded	% of Total	Ave. Bag
Residents	0	3,886	86.7%	
	1	333	7.4%	1.06
	2	199	4.4%	2.32
	3	64	1.4%	3.63

2016 YOUTH-ONLY PHEASANT SEASON PARTICIPATION

Last Revised: 19 May 2017

License Type	Number Participated	Did Not Participate	Percent Participated
Small Game	41	814	4.8%
Combination	117	2,346	4.8%
Senior Combination	26	636	3.9%
Youth Small Game	46	185	19.9%
Junior Combination	8	263	3.0%
Total	238	4,244	5.3%

Total Pheasant Harvest Distribution by County 2016

COUNTY	HUNTER DISTRIBUTION			HARVEST DISTRIBUTION			Birds/Hunter **
	# Projected	% of Total	# Proj w/ Unk *	# Projected	% of Total	# Proj w/ Unk *	
Minnehaha	1,792	1.3	1,829	8,648	0.7	8,759	4.8
Pennington	293	0.2	299	1,777	0.2	1,800	6.1
Brown	8,072	5.8	8,214	60,970	5.3	61,752	7.6
Beadle	5,601	4.0	5,700	50,623	4.4	51,273	9.0
Codington	2,190	1.6	2,233	13,178	1.1	13,348	6.0
Brookings	2,236	1.6	2,280	13,194	1.1	13,364	5.9
Yankton	1,249	0.9	1,274	7,539	0.7	7,636	6.0
Davison	4,265	3.0	4,337	33,736	2.9	34,169	7.9
Lawrence	20	0.0	21	0	0.0	0	0.0
Aurora	5,050	3.6	5,141	42,476	3.7	43,021	8.4
Bennett	1,138	0.8	1,160	7,593	0.7	7,691	6.7
Bon Homme	917	0.7	935	5,805	0.5	5,879	6.3
Brule	7,026	5.0	7,146	68,704	5.9	69,585	9.8
Buffalo	615	0.4	626	5,344	0.5	5,413	8.7
Butte	102	0.1	104	1,024	0.1	1,037	10.0
Campbell	1,669	1.2	1,697	15,634	1.4	15,834	9.4
Charles Mix	4,172	3.0	4,247	37,251	3.2	37,730	8.9
Clark	2,877	2.0	2,929	21,174	1.8	21,446	7.4
Clay	521	0.4	532	3,146	0.3	3,187	6.0
Corson	695	0.5	707	5,133	0.4	5,199	7.4
Custer	111	0.1	113	437	0.0	443	3.9
Day	1,497	1.1	1,524	7,705	0.7	7,804	5.1
Deuel	698	0.5	712	3,968	0.3	4,019	5.7
Dewey	1,674	1.2	1,703	14,575	1.3	14,762	8.7
Douglas	1,359	1.0	1,384	10,629	0.9	10,765	7.8
Edmunds	3,809	2.7	3,875	32,570	2.8	32,988	8.6
Fall River	421	0.3	430	1,271	0.1	1,287	3.0
Faulk	3,891	2.8	3,958	39,223	3.4	39,726	10.1
Grant	545	0.4	557	5,016	0.4	5,081	9.2
Gregory	4,195	3.0	4,265	36,801	3.2	37,272	8.8
Haakon	653	0.5	666	5,603	0.5	5,675	8.6
Hamlin	1,469	1.0	1,499	9,958	0.9	10,086	6.8
Hand	4,171	3.0	4,244	35,961	3.1	36,422	8.6
Hanson	1,501	1.1	1,531	12,609	1.1	12,771	8.4
Harding	425	0.3	433	2,992	0.3	3,030	7.0
Hughes	4,423	3.2	4,502	40,853	3.5	41,378	9.2
Hutchinson	2,156	1.5	2,196	14,646	1.3	14,834	6.8
Hyde	1,115	0.8	1,134	9,689	0.8	9,813	8.7
Jackson	104	0.1	106	922	0.1	934	8.9
Jerauld	1,733	1.2	1,764	15,125	1.3	15,319	8.7
Jones	1,449	1.0	1,474	12,895	1.1	13,060	8.9
Kingsbury	2,125	1.5	2,166	14,743	1.3	14,933	6.9
Lake	1,603	1.1	1,636	8,642	0.7	8,753	5.4
Lincoln	1,001	0.7	1,023	5,687	0.5	5,760	5.7
Lyman	6,599	4.7	6,711	63,788	5.5	64,606	9.7
McCook	2,099	1.5	2,144	17,364	1.5	17,589	8.3
McPherson	2,520	1.8	2,562	18,578	1.6	18,816	7.4
Marshall	984	0.7	1,002	5,528	0.5	5,599	5.6
Meade	328	0.2	335	2,457	0.2	2,489	7.5
Mellette	266	0.2	270	2,223	0.2	2,252	8.4
Miner	2,858	2.0	2,911	22,290	1.9	22,577	7.8
Moody	844	0.6	861	5,548	0.5	5,619	6.6
Perkins	1,721	1.2	1,754	16,781	1.5	16,998	9.8
Potter	3,157	2.2	3,212	28,130	2.4	28,491	8.9
Roberts	926	0.7	944	4,077	0.4	4,130	4.4
Sanborn	2,770	2.0	2,822	25,232	2.2	25,557	9.1
Spink	5,578	4.0	5,674	44,875	3.9	45,451	8.0
Stanley	1,684	1.2	1,716	14,415	1.2	14,600	8.6
Sully	3,010	2.1	3,066	32,844	2.8	33,267	10.9
Tripp	7,386	5.3	7,509	67,065	5.8	67,925	9.1
Turner	1,003	0.7	1,024	7,764	0.7	7,864	7.7
Union	482	0.3	492	3,158	0.3	3,199	6.6
Walworth	2,982	2.1	3,033	24,233	2.1	24,544	8.1
Ziebach	314	0.2	320	2,478	0.2	2,510	7.9
Shannon	108	0.1	110	434	0.0	439	4.0
Todd	108	0.1	110	1,022	0.1	1,035	9.5
Unk/Unreported	2,531	-	-	14,843	-	-	5.9

TOTALS: 142,887 100% 142,887 1,170,596 100% 1,170,596 8.19

Last Revised: 19 May 2017

* Includes unknown county projection values by assuming unknown county values are distributed the same as reported county values. Total values may be different due to rounding.

** Calculation uses "# projected" values without correction for unknown/unreported county values.

Resident Pheasant Harvest Distribution by County 2016

COUNTY	HUNTER DISTRIBUTION				HARVEST DISTRIBUTION				Birds/Hunter **
	# Reported	# Projected	% of Total	# Proj w/ Unk *	# Reported	# Projected	% of Total	# Proj w/ Unk *	
Minnehaha	69	1,407	2.3	1,438	297	5,962	1.3	6,040	4.2
Pennington	7	143	0.2	146	42	843	0.2	854	5.9
Brown	143	2,916	4.8	2,980	1,072	21,521	4.6	21,799	7.4
Beadle	108	2,202	3.6	2,251	1,100	22,083	4.7	22,369	10.0
Codington	68	1,387	2.3	1,417	408	8,191	1.7	8,297	5.9
Brookings	76	1,550	2.6	1,584	447	8,974	1.9	9,090	5.8
Yankton	44	897	1.5	917	270	5,420	1.1	5,490	6.0
Davison	54	1,101	1.8	1,125	543	10,901	2.3	11,042	9.9
Lawrence	1	20	0.0	21	0	0	0.0	0	0.0
Aurora	104	2,121	3.5	2,167	813	16,321	3.5	16,532	7.7
Bennett	32	653	1.1	667	178	3,573	0.8	3,620	5.5
Bon Homme	31	632	1.0	646	167	3,353	0.7	3,396	5.3
Brule	95	1,937	3.2	1,980	1,090	21,882	4.6	22,165	11.3
Buffalo	17	347	0.6	354	159	3,192	0.7	3,233	9.2
Butte	5	102	0.2	104	51	1,024	0.2	1,037	10.0
Campbell	26	530	0.9	542	134	2,690	0.6	2,725	5.1
Charles Mix	88	1,794	3.0	1,834	807	16,201	3.4	16,410	9.0
Clark	59	1,203	2.0	1,230	454	9,114	1.9	9,232	7.6
Clay	19	387	0.6	396	121	2,429	0.5	2,461	6.3
Corson	16	326	0.5	333	97	1,947	0.4	1,973	6.0
Custer	3	61	0.1	63	1	20	0.0	20	0.3
Day	34	693	1.1	709	196	3,935	0.8	3,986	5.7
Deuel	26	530	0.9	542	132	2,650	0.6	2,684	5.0
Dewey	23	469	0.8	479	230	4,617	1.0	4,677	9.8
Douglas	33	673	1.1	688	227	4,557	1.0	4,616	6.8
Edmunds	62	1,264	2.1	1,292	509	10,218	2.2	10,351	8.1
Fall River	19	387	0.6	396	55	1,104	0.2	1,118	2.8
Faulk	57	1,162	1.9	1,188	533	10,700	2.3	10,839	9.2
Grant	21	428	0.7	438	205	4,115	0.9	4,169	9.6
Gregory	44	897	1.5	917	291	5,842	1.2	5,918	6.5
Haakon	23	469	0.8	479	201	4,035	0.9	4,087	8.6
Hamlin	54	1,101	1.8	1,125	388	7,789	1.7	7,890	7.1
Hand	74	1,509	2.5	1,542	530	10,640	2.3	10,778	7.1
Hanson	49	999	1.7	1,021	427	8,572	1.8	8,683	8.6
Harding	11	224	0.4	229	46	923	0.2	935	4.1
Hughes	88	1,794	3.0	1,834	1,003	20,136	4.3	20,396	11.2
Hutchinson	54	1,101	1.8	1,125	344	6,906	1.5	6,995	6.3
Hyde	21	428	0.7	438	181	3,634	0.8	3,681	8.5
Jackson	1	20	0.0	21	21	422	0.1	427	20.7
Jerauld	39	795	1.3	813	328	6,585	1.4	6,670	8.3
Jones	21	428	0.7	438	241	4,838	1.0	4,901	11.3
Kingsbury	64	1,305	2.2	1,334	417	8,371	1.8	8,480	6.4
Lake	63	1,285	2.1	1,313	364	7,307	1.5	7,402	5.7
Lincoln	45	918	1.5	938	265	5,320	1.1	5,389	5.8
Lyman	88	1,794	3.0	1,834	885	17,767	3.8	17,997	9.9
McCook	89	1,815	3.0	1,855	737	14,796	3.1	14,987	8.2
McPherson	30	612	1.0	625	156	3,132	0.7	3,172	5.1
Marshall	22	449	0.7	458	110	2,208	0.5	2,237	4.9
Meade	12	245	0.4	250	85	1,706	0.4	1,728	7.0
Mellette	4	82	0.1	83	21	422	0.1	427	5.2
Miner	72	1,468	2.4	1,500	488	9,797	2.1	9,924	6.7
Moody	34	693	1.1	709	224	4,497	1.0	4,555	6.5
Perkins	54	1,101	1.8	1,125	526	10,560	2.2	10,696	9.6
Potter	53	1,081	1.8	1,104	464	9,315	2.0	9,435	8.6
Roberts	29	591	1.0	604	125	2,509	0.5	2,542	4.2
Sanborn	71	1,448	2.4	1,480	701	14,073	3.0	14,255	9.7
Spink	88	1,794	3.0	1,834	704	14,133	3.0	14,316	7.9
Stanley	44	897	1.5	917	394	7,910	1.7	8,012	8.8
Sully	77	1,570	2.6	1,605	914	18,349	3.9	18,586	11.7
Tripp	88	1,794	3.0	1,834	740	14,856	3.1	15,048	8.3
Turner	41	836	1.4	854	302	6,063	1.3	6,141	7.3
Union	22	449	0.7	458	149	2,991	0.6	3,030	6.7
Walworth	42	856	1.4	875	338	6,786	1.4	6,873	7.9
Ziebach	8	163	0.3	167	47	944	0.2	956	5.8
Shannon	2	41	0.1	42	0	0	0.0	0	0.0
Todd	2	41	0.1	42	16	321	0.1	325	7.9
Unk/Unreported	65	1,325	-	-	304	6,103	-	-	4.6
TOTALS:	3,028	61,746	100%	61,746	23,815	478,099	100%	478,099	7.74

Last Revised: 19 May 2017

* Includes unknown county projection values by assuming unknown county values are distributed the same as reported county values. Total values may be different due to rounding.

** Calculation uses "# projected" values without correction for unknown/unreported county values.

Nonresident Pheasant Harvest Distribution by County 2016

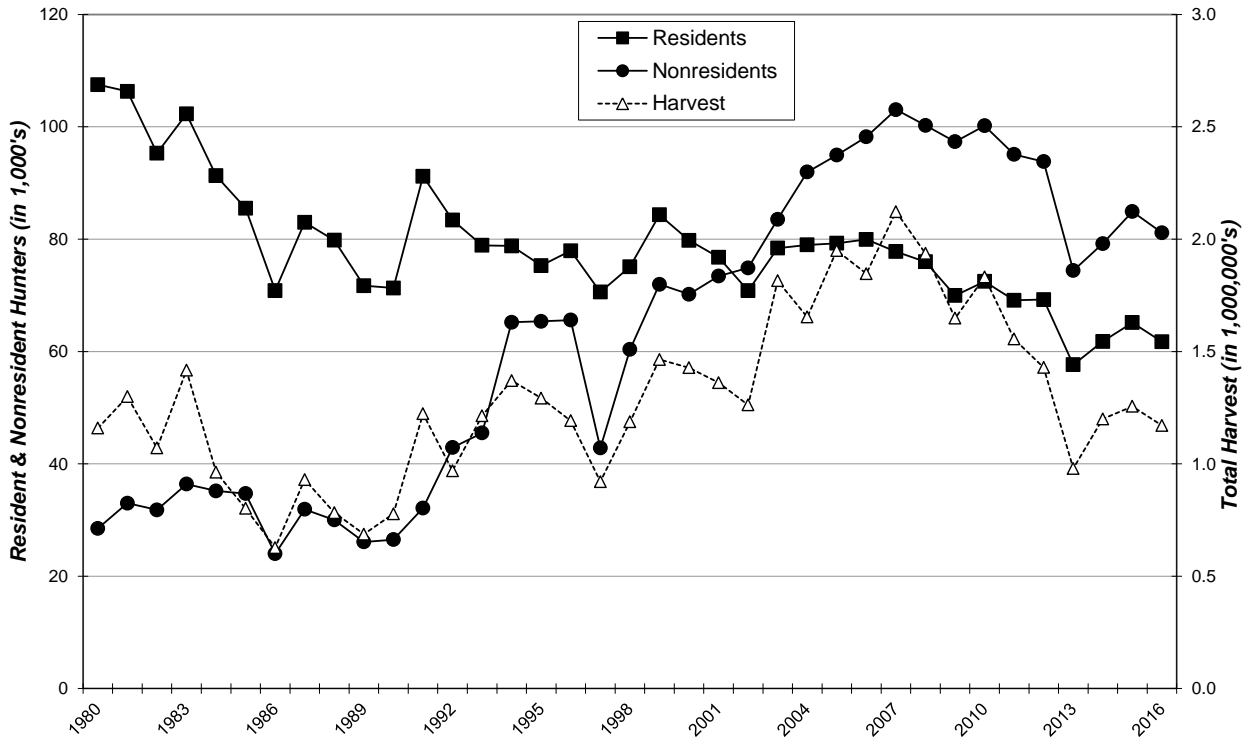
COUNTY	HUNTER DISTRIBUTION				HARVEST DISTRIBUTION				Birds/Hunter **
	# Reported	# Projected	% of Total	# Proj w/ Unk *	# Reported	# Projected	% of Total	# Proj w/ Unk *	
Minnehaha	23	385	0.5	391	161	2,686	0.4	2,720	7.0
Pennington	9	151	0.2	153	56	934	0.1	946	6.2
Brown	308	5,156	6.5	5,234	2,365	39,449	5.8	39,953	7.7
Beadle	203	3,398	4.3	3,450	1,711	28,540	4.2	28,905	8.4
Codington	48	804	1.0	816	299	4,987	0.7	5,051	6.2
Brookings	41	686	0.9	697	253	4,220	0.6	4,274	6.1
Yankton	21	352	0.4	357	127	2,118	0.3	2,145	6.0
Davison	189	3,164	4.0	3,212	1,369	22,835	3.3	23,127	7.2
Lawrence	0	0	0.0	0	0	0	0.0	0	0
Aurora	175	2,930	3.7	2,974	1,568	26,155	3.8	26,489	8.9
Bennett	29	485	0.6	493	241	4,020	0.6	4,071	8.3
Bon Homme	17	285	0.4	289	147	2,452	0.4	2,483	8.6
Brule	304	5,089	6.4	5,166	2,807	46,821	6.8	47,420	9.2
Buffalo	16	268	0.3	272	129	2,152	0.3	2,179	8.0
Butte	0	0	0.0	0	0	0	0.0	0	0
Campbell	68	1,138	1.4	1,156	776	12,944	1.9	13,109	11.4
Charles Mix	142	2,377	3.0	2,413	1,262	21,050	3.1	21,320	8.9
Clark	100	1,674	2.1	1,699	723	12,060	1.8	12,214	7.2
Clay	8	134	0.2	136	43	717	0.1	726	5.4
Corson	22	368	0.5	374	191	3,186	0.5	3,227	8.7
Custer	3	50	0.1	51	25	417	0.1	422	8.3
Day	48	804	1.0	816	226	3,770	0.6	3,818	4.7
Deuel	10	167	0.2	170	79	1,318	0.2	1,335	7.9
Dewey	72	1,205	1.5	1,223	597	9,958	1.5	10,085	8.3
Douglas	41	686	0.9	697	364	6,072	0.9	6,149	8.8
Edmunds	152	2,545	3.2	2,583	1,340	22,352	3.3	22,637	8.8
Fall River	2	33	0.0	34	10	167	0.0	169	5.0
Faulk	163	2,729	3.4	2,770	1,710	28,523	4.2	28,888	10.5
Grant	7	117	0.1	119	54	901	0.1	912	7.7
Gregory	197	3,298	4.1	3,348	1,856	30,959	4.5	31,354	9.4
Haakon	11	184	0.2	187	94	1,568	0.2	1,588	8.5
Hamlin	22	368	0.5	374	130	2,168	0.3	2,196	5.9
Hand	159	2,662	3.3	2,702	1,518	25,321	3.7	25,644	9.5
Hanson	30	502	0.6	510	242	4,037	0.6	4,088	8.0
Harding	12	201	0.3	204	124	2,068	0.3	2,095	10.3
Hughes	157	2,628	3.3	2,668	1,242	20,717	3.0	20,982	7.9
Hutchinson	63	1,055	1.3	1,071	464	7,740	1.1	7,839	7.3
Hyde	41	686	0.9	697	363	6,055	0.9	6,132	8.8
Jackson	5	84	0.1	85	30	500	0.1	507	6.0
Jerauld	56	937	1.2	952	512	8,540	1.2	8,649	9.1
Jones	61	1,021	1.3	1,037	483	8,057	1.2	8,160	7.9
Kingsbury	49	820	1.0	833	382	6,372	0.9	6,453	7.8
Lake	19	318	0.4	323	80	1,334	0.2	1,351	4.2
Lincoln	5	84	0.1	85	22	367	0.1	372	4.4
Lyman	287	4,804	6.0	4,877	2,759	46,021	6.7	46,609	9.6
McCook	17	285	0.4	289	154	2,569	0.4	2,602	9.0
McPherson	114	1,908	2.4	1,937	926	15,446	2.3	15,643	8.1
Marshall	32	536	0.7	544	199	3,319	0.5	3,362	6.2
Meade	5	84	0.1	85	45	751	0.1	760	9.0
Mellette	11	184	0.2	187	108	1,801	0.3	1,824	9.8
Miner	83	1,389	1.7	1,410	749	12,494	1.8	12,653	9.0
Moody	9	151	0.2	153	63	1,051	0.2	1,064	7.0
Perkins	37	619	0.8	629	373	6,222	0.9	6,301	10.0
Potter	124	2,076	2.6	2,107	1,128	18,815	2.8	19,056	9.1
Roberts	20	335	0.4	340	94	1,568	0.2	1,588	4.7
Sanborn	79	1,322	1.7	1,342	669	11,159	1.6	11,302	8.4
Spink	226	3,783	4.7	3,840	1,843	30,742	4.5	31,135	8.1
Stanley	47	787	1.0	799	390	6,505	1.0	6,588	8.3
Sully	86	1,440	1.8	1,461	869	14,495	2.1	14,680	10.1
Tripp	334	5,591	7.0	5,676	3,130	52,209	7.6	52,877	9.3
Turner	10	167	0.2	170	102	1,701	0.2	1,723	10.2
Union	2	33	0.0	34	10	167	0.0	169	5.0
Walworth	127	2,126	2.7	2,158	1,046	17,448	2.6	17,671	8.2
Ziebach	9	151	0.2	153	92	1,535	0.2	1,554	10.2
Shannon	4	67	0.1	68	26	434	0.1	439	6.5
Todd	4	67	0.1	68	42	701	0.1	710	10.5
Unk/Unreported	72	1,205	-	-	524	8,740	-	-	7.3
TOTALS	4,847	81,141	100%	81,141	41,516	692,497	100%	692,497	8.53

Last Revised: 19 May 2017

* Includes unknown county projection values by assuming unknown county values are distributed the same as reported county values. Total values may be different due to rounding.

** Calculation uses "# projected" values without correction for unknown/unreported county values.

SOUTH DAKOTA PHEASANT HARVEST 1980-2016



SOUTH DAKOTA PHEASANT HUNTERS AND AVERAGE SEASON HARVEST 1980-2016

