

PARTRIDGE

The 2016 partridge season was open 17 September 2016 - 1 January 2017 statewide. Harvest surveys were sent to both resident and nonresident hunters. The daily limit was 5 birds, possession 15. To hunt partridge residents required to hold small game, 1-day small game, adult, senior or junior combination, or youth small game licenses; nonresidents were required to obtain adult or youth small game or nonresident shooting preserve licenses. Harvest surveys were sent to both resident and nonresident hunters. No shooting preserve license holders were surveyed and none of their harvest is included in any of the data in this report.

In 2016, there were 90,541 resident and 85,405 nonresident licenses issued that allowed holders to hunt partridge. Approximately 10% of residents and nonresidents were surveyed for the upland bird seasons. Survey response rates were 59% for residents and 64% for nonresidents.

Based on survey responses indicating at least one day of hunting partridge, there were a projected 2,516 resident and 2,204 nonresident partridge hunters.

An estimated 10,325 partridge were harvested (7,053 by residents, 3,272 by nonresidents) during the 2016 season. When asked their satisfaction on the season, (1 being least satisfied, 7 being most satisfied), resident upland bird hunters reported an average satisfaction rating of 4.72 while nonresidents reported an average satisfaction rating of 5.43.

Comparison of the 2007 - 2016 partridge harvests

Year	<i>Residents</i>				<i>Nonresidents</i>			
	<i>Hunters</i>	<i>Harvest</i>	<i>Ave Days Hunted</i>	<i>Ave Bag</i>	<i>Hunters</i>	<i>Harvest</i>	<i>Ave Days Hunted</i>	<i>Ave Bag</i>
2007	3,767	7,760	8.01	2.06	3,160	6,573	4.66	2.08
2008	2,916	6,065	7.16	2.08	2,945	6,155	4.51	2.09
2009	2,687	4,675	7.23	1.74	2,511	3,716	4.36	1.48
2010	2,361	5,383	8.00	2.28	2,286	4,092	4.71	1.79
2011	2,335	3,719	3.77	1.57	1,889	3,771	4.09	2.01
2012	2,903	4,338	4.75	1.51	3,231	6,295	3.97	1.95
2013	2,666	2,990	7.09	1.13	1,926	2,761	4.23	1.43
2014	2,355	5,942	6.27	2.43	1,985	3,609	4.13	1.82
2015	3,189	5,840	5.63	1.85	2,133	5,019	4.05	3.08
2016	2,516	7,053	5.87	2.73	2,204	3,272	4.21	1.48

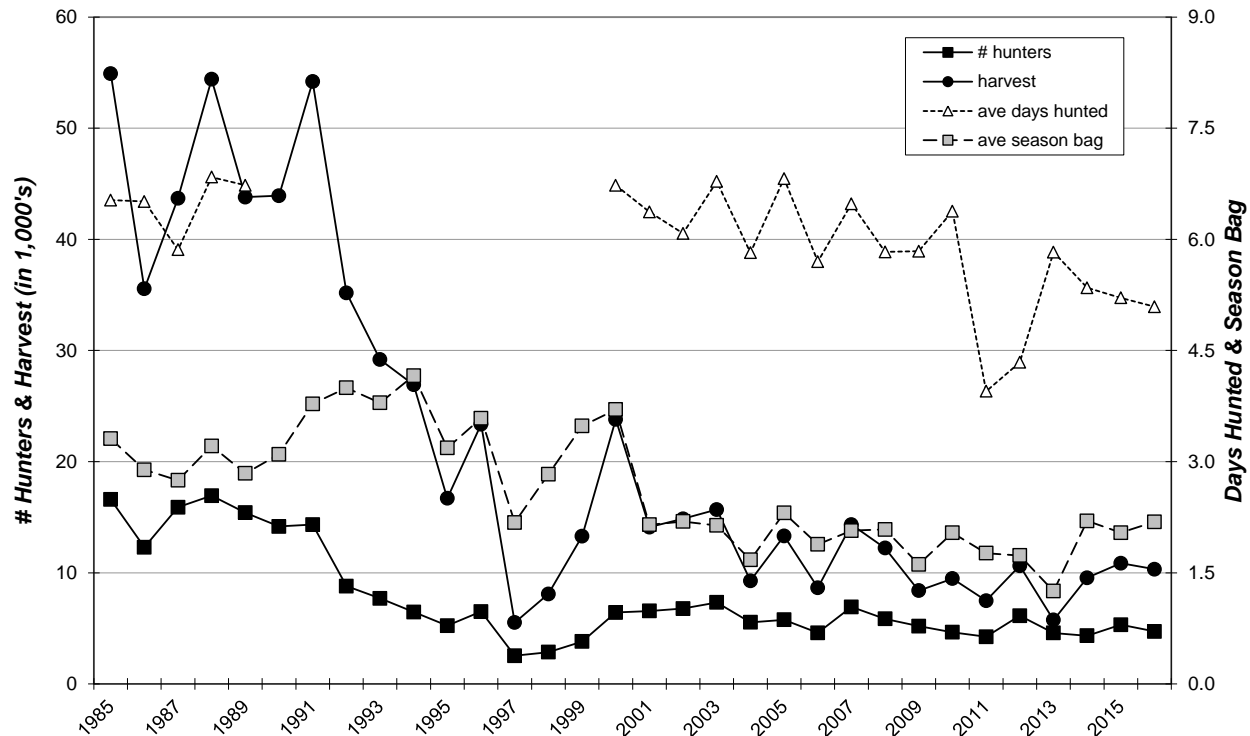
PARTRIDGE HARVEST PROJECTIONS FOR 2016

Revised: 18 May 2017

	RESIDENT TOTALS BY LICENSE TYPE						NONRESIDENT TOTALS		
	Small Game	Combo	Senior Combo	Junior Combo	Youth SmGm	Sum Estimates	Nonres Sm Game	Youth Sm Game	Sum Estimates
Licenses Sold	21,164	47,929	8,434	8,164	4,850	90,541	82,959	2,446	85,405
Projected ACTIVE UPLAND BIRD HUNTERS	17,352	32,031	4,994	4,248	3,800	62,425	79,380	2,209	81,589
Number Sampled by Survey	1,707	4,107	770	659	406	7,649	7,585	201	7,786
Number Responded to Survey	855	2,463	662	271	231	4,482	4,897	100	4,997
% Responded and Participated in Season	82%	67%	59%	52%	78%	68%	98%	92%	98%
Responded and Participated in Season	701	1,646	392	141	181	3,061	4,782	92	4,874
Responded but DID NOT HUNT	154	817	270	130	50	1,421	115	8	123
Survey Response Rate	50.1%	60.0%	86.0%	41.1%	56.9%	58.6%	64.6%	49.8%	64.2%
No. Hunters Reporting Partridge Days	18	90	13	3	3	127	127	4	131
Sum Partridge Hunted Days	94	548	75	20	9	746	533	18	551
Average Days Hunted Partridge	5.22	6.09	5.77	6.67	3.00	5.87	4.20	4.50	4.21
Sum Partridge Bagged	18	277	18	30	4	347	187	7	194
Average Season Partridge Bag	1.00	3.08	1.38	10.00	1.33	2.73	1.47	1.75	1.48
Projected Days Partridge Hunting	2,327	10,664	956	603	189	14,738	8,848	432	9,280
Projected No. Partridge Hunters	446	1,751	166	90	63	2,516	2,108	96	2,204
Projected Partridge Bag	446	5,390	229	904	84	7,053	3,104	168	3,272
TOTAL PARTRIDGE HARVEST =							10,325		
Upland Bird Hunters Mean Satisfaction Score *	4.75	4.72	4.57	4.78	4.89	4.72	5.44	5.21	5.43

* Based on scale of 1-7 with 1="very dissatisfied" and 7="very satisfied"

STATEWIDE PARTRIDGE HARVEST, 1985-2016



Resident Partridge Harvest Distribution by County 2016

COUNTY	HUNTER DISTRIBUTION				HARVEST DISTRIBUTION				Birds/Hunter **
	# Reported	# Projected	% of Total	# Proj w/ Unk *	# Reported	# Projected	% of Total	# Proj w/ Unk *	
Minnehaha	0	0	0.0	0	0	0	0.0	0	0
Pennington	6	119	4.9	124	5	102	1.5	105	0.9
Brown	0	0	0.0	0	0	0	0.0	0	0
Beadle	0	0	0.0	0	0	0	0.0	0	0
Codington	1	20	0.8	21	5	102	1.5	105	5.1
Brookings	5	99	4.1	103	2	41	0.6	42	0.4
Yankton	1	20	0.8	21	0	0	0.0	0	0.0
Davison	0	0	0.0	0	0	0	0.0	0	0
Lawrence	0	0	0.0	0	0	0	0.0	0	0
Aurora	0	0	0.0	0	0	0	0.0	0	0
Bennett	0	0	0.0	0	0	0	0.0	0	0
Bon Homme	1	20	0.8	21	0	0	0.0	0	0.0
Brule	1	20	0.8	21	2	41	0.6	42	2.1
Buffalo	2	40	1.6	41	0	0	0.0	0	0.0
Butte	2	40	1.6	41	5	102	1.5	105	2.6
Campbell	2	40	1.6	41	3	61	0.9	63	1.5
Charles Mix	1	20	0.8	21	1	20	0.3	21	1.0
Clark	0	0	0.0	0	0	0	0.0	0	0
Clay	0	0	0.0	0	0	0	0.0	0	0
Corson	2	40	1.6	41	1	20	0.3	21	0.5
Custer	0	0	0.0	0	0	0	0.0	0	0
Day	1	20	0.8	21	0	0	0.0	0	0.0
Deuel	2	40	1.6	41	0	0	0.0	0	0.0
Dewey	7	139	5.7	144	29	589	8.6	609	4.3
Douglas	2	40	1.6	41	4	81	1.2	84	2.1
Edmunds	0	0	0.0	0	0	0	0.0	0	0
Fall River	1	20	0.8	21	12	244	3.6	252	12.3
Faulk	2	40	1.6	41	3	61	0.9	63	1.5
Grant	3	59	2.5	62	0	0	0.0	0	0.0
Gregory	2	40	1.6	41	12	244	3.6	252	6.2
Haakon	2	40	1.6	41	0	0	0.0	0	0.0
Hamlin	0	0	0.0	0	0	0	0.0	0	0
Hand	1	20	0.8	21	0	0	0.0	0	0.0
Hanson	1	20	0.8	21	5	102	1.5	105	5.1
Harding	4	79	3.3	82	10	203	3.0	210	2.6
Hughes	1	20	0.8	21	0	0	0.0	0	0.0
Hutchinson	0	0	0.0	0	0	0	0.0	0	0
Hyde	0	0	0.0	0	0	0	0.0	0	0
Jackson	0	0	0.0	0	0	0	0.0	0	0
Jerauld	0	0	0.0	0	0	0	0.0	0	0
Jones	0	0	0.0	0	0	0	0.0	0	0
Kingsbury	3	59	2.5	62	10	203	3.0	210	3.4
Lake	2	40	1.6	41	1	20	0.3	21	0.5
Lincoln	1	20	0.8	21	2	41	0.6	42	2.1
Lyman	0	0	0.0	0	0	0	0.0	0	0
McCook	4	79	3.3	82	5	102	1.5	105	1.3
McPherson	2	40	1.6	41	2	41	0.6	42	1.0
Marshall	0	0	0.0	0	0	0	0.0	0	0
Meade	12	238	9.8	247	69	1,402	20.5	1,448	5.9
Mellette	0	0	0.0	0	0	0	0.0	0	0
Miner	0	0	0.0	0	0	0	0.0	0	0
Moody	2	40	1.6	41	1	20	0.3	21	0.5
Perkins	29	574	23.8	598	135	2,744	40.2	2,834	4.8
Potter	2	40	1.6	41	5	102	1.5	105	2.6
Roberts	2	40	1.6	41	0	0	0.0	0	0.0
Sanborn	0	0	0.0	0	0	0	0.0	0	0
Spink	1	20	0.8	21	0	0	0.0	0	0.0
Stanley	4	79	3.3	82	5	102	1.5	105	1.3
Sully	0	0	0.0	0	0	0	0.0	0	0
Tripp	0	0	0.0	0	0	0	0.0	0	0
Turner	1	20	0.8	21	1	20	0.3	21	1.0
Union	0	0	0.0	0	0	0	0.0	0	0
Walworth	1	20	0.8	21	0	0	0.0	0	0.0
Ziebach	2	40	1.6	41	1	20	0.3	21	0.5
Shannon	0	0	0.0	0	0	0	0.0	0	0
Todd	1	20	0.8	21	0	0	0.0	0	0.0
Unknown	5	99	-	-	11	224	-	-	2.3
TOTALS:	127	2,516	100%	2,516	347	7,053	100%	7,053	2.80

Last Revised: 27 June 2017

* Includes unknown county projection values by assuming unknown county values are distributed the same as reported county values. Total values may be different due to rounding.

** Calculation uses "# projected" values without correction for unknown/unreported county values.

Nonresident Partridge Harvest Distribution by County 2016

COUNTY	HUNTER DISTRIBUTION				HARVEST DISTRIBUTION				Birds/Hunter **
	# Reported	# Projected	% of Total	# Proj w/ Unk *	# Reported	# Projected	% of Total	# Proj w/ Unk *	
Minnehaha	2	34	1.5	34	5	84	2.6	84	2.5
Pennington	0	0	0.0	0	0	0	0.0	0	0
Brown	3	50	2.3	51	0	0	0.0	0	0.0
Beadle	2	34	1.5	34	7	118	3.6	118	3.5
Codington	0	0	0.0	0	0	0	0.0	0	0
Brookings	0	0	0.0	0	0	0	0.0	0	0
Yankton	0	0	0.0	0	0	0	0.0	0	0
Davison	1	17	0.8	17	5	84	2.6	84	5.0
Lawrence	0	0	0.0	0	0	0	0.0	0	0
Aurora	0	0	0.0	0	0	0	0.0	0	0
Bennett	0	0	0.0	0	0	0	0.0	0	0
Bon Homme	1	17	0.8	17	0	0	0.0	0	0.0
Brule	3	50	2.3	51	2	34	1.0	34	0.7
Buffalo	0	0	0.0	0	0	0	0.0	0	0
Butte	1	17	0.8	17	0	0	0.0	0	0.0
Campbell	3	50	2.3	51	1	17	0.5	17	0.3
Chas Mix	1	17	0.8	17	0	0	0.0	0	0.0
Clark	2	34	1.5	34	6	101	3.1	101	3.0
Clay	0	0	0.0	0	0	0	0.0	0	0
Corson	5	84	3.8	85	14	236	7.2	236	2.8
Custer	0	0	0.0	0	0	0	0.0	0	0
Day	0	0	0.0	0	0	0	0.0	0	0
Deuel	0	0	0.0	0	0	0	0.0	0	0
Dewey	19	320	14.6	322	28	472	14.4	472	1.5
Douglas	0	0	0.0	0	0	0	0.0	0	0
Edmunds	2	34	1.5	34	0	0	0.0	0	0.0
Fall River	0	0	0.0	0	0	0	0.0	0	0
Faulk	0	0	0.0	0	0	0	0.0	0	0
Grant	0	0	0.0	0	0	0	0.0	0	0
Gregory	9	151	6.9	153	9	152	4.6	152	1.0
Haakon	1	17	0.8	17	2	34	1.0	34	2.0
Hamlin	0	0	0.0	0	0	0	0.0	0	0
Hand	2	34	1.5	34	3	51	1.5	51	1.5
Hanson	0	0	0.0	0	0	0	0.0	0	0
Harding	1	17	0.8	17	4	67	2.1	67	4.0
Hughes	6	101	4.6	102	8	135	4.1	135	1.3
Hutchinson	1	17	0.8	17	0	0	0.0	0	0.0
Hyde	2	34	1.5	34	2	34	1.0	34	1.0
Jackson	0	0	0.0	0	0	0	0.0	0	0
Jerauld	0	0	0.0	0	0	0	0.0	0	0
Jones	2	34	1.5	34	2	34	1.0	34	1.0
Kingsbury	1	17	0.8	17	0	0	0.0	0	0.0
Lake	0	0	0.0	0	0	0	0.0	0	0
Lincoln	0	0	0.0	0	0	0	0.0	0	0
Lyman	5	84	3.8	85	1	17	0.5	17	0.2
McCook	0	0	0.0	0	0	0	0.0	0	0
McPherson	1	17	0.8	17	1	17	0.5	17	1.0
Marshall	0	0	0.0	0	0	0	0.0	0	0
Meade	3	50	2.3	51	4	67	2.1	67	1.3
Mellette	0	0	0.0	0	0	0	0.0	0	0
Miner	2	34	1.5	34	0	0	0.0	0	0.0
Moody	0	0	0.0	0	0	0	0.0	0	0
Perkins	18	303	13.8	305	42	708	21.6	708	2.3
Potter	3	50	2.3	51	1	17	0.5	17	0.3
Roberts	0	0	0.0	0	0	0	0.0	0	0
Sanborn	0	0	0.0	0	0	0	0.0	0	0
Spink	2	34	1.5	34	0	0	0.0	0	0.0
Stanley	6	101	4.6	102	13	219	6.7	219	2.2
Sully	2	34	1.5	34	0	0	0.0	0	0.0
Tripp	4	67	3.1	68	2	34	1.0	34	0.5
Turner	0	0	0.0	0	0	0	0.0	0	0
Union	0	0	0.0	0	0	0	0.0	0	0
Walworth	6	101	4.6	102	6	101	3.1	101	1.0
Ziebach	6	101	4.6	102	23	388	11.9	388	3.8
Shannon	1	17	0.8	17	0	0	0.0	0	0.0
Todd	1	17	0.8	17	3	51	1.5	51	3.0
Unknown	1	17	-	-	0	0	-	-	0.0
TOTALS:	131	2,204	100.0%	2,204	194	3,272	100.0%	3,272	1.48

Last Revised: 27 June 2017

* Includes unknown county projection values by assuming unknown county values are distributed the same as reported county values. Total values may be different due to rounding.

** Calculation uses "# projected" values without correction for unknown/unreported county values.