

MOURNING DOVE

The 2015 mourning dove season was open 1 September -9 November statewide. The daily limit was 15 birds, possession 30. To hunt doves, residents were required to hold a small game, 1-day small game, adult, senior or junior combination, or youth small game license; nonresidents were required to obtain a nonresident small game or nonresident youth small game license. All hunters were also required to purchase a Migratory Bird Certificate.

In 2015, 29,115 resident and 89,284 nonresident licenses were issued to hunt doves. Approximately 17% of resident migratory bird hunters and 10% of nonresident small game hunters were surveyed for the mourning dove season. Survey response rates were 64% for residents and 67% for nonresidents.

Based on survey responses indicating at least one day of hunting doves, there were an estimated 7,651 active dove hunters. The five counties with the highest projected dove harvest were Hughes, Charles Mix, Davison, Minnehaha, and Pennington.

An estimated total of 134,922 doves were harvested during the 2015 season. When asked their satisfaction on the season, (1 being least, 7 being most satisfied), resident dove hunters reported an average satisfaction rating of 5.07, nonresidents 5.83.

Summary comparison of the 2006 - 2015 mourning dove seasons

Year	<i>Resident Hunters</i>					<i>Nonresident Hunters</i>				
	<i>Number Hunters</i>	<i>Harvest</i>	<i>Ave Day Hunted</i>	<i>Ave Bag</i>	<i>Satisfaction</i>	<i>Number Hunters</i>	<i>Harvest</i>	<i>Ave Day Hunted</i>	<i>Ave Bag</i>	<i>Satisfaction</i>
2006	8,919	150,820	4.13	16.91	4.96	134	1,723	3.57	12.86	6.57
2007	7,722	125,174	4.19	16.21	4.98	439	10,694	3.86	24.36	5.79
2008	7,346	125,102	4.39	17.03	5.01	373	7,050	3.40	18.90	6.00
2009	6,892	114,821	4.34	16.66	4.93	285	6,698	4.44	23.50	5.81
2010	6,035	93,361	4.15	15.47	5.13	258	4,267	4.23	16.54	6.38
2011	6,112	82,291	3.50	13.46	5.27	332	6,563	3.65	19.79	5.41
2012	5,984	88,036	4.16	14.71	4.99	366	7,071	3.19	19.78	5.78
2013	6,752	113,367	4.56	16.79	5.06	210	2,061	2.67	9.80	5.27
2014	8,345	167,407	4.67	20.06	5.05	316	3,991	2.95	12.62	5.71
2015	7,255	127,217	4.66	17.53	5.07	396	7,705	3.29	19.46	5.83

MOURNING DOVE HARVEST PROJECTIONS FOR 2015

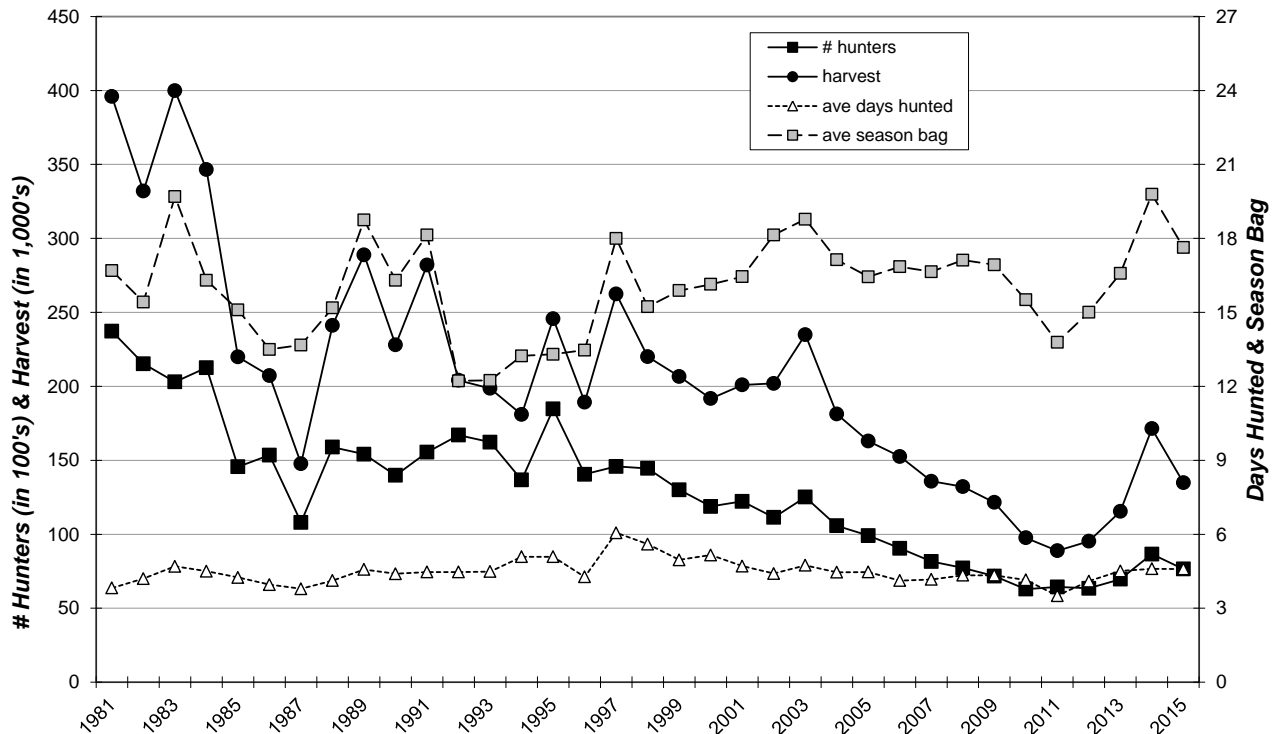
Last Revised: 2 June 2016

	Resident	Non Resident
Licenses Sold *	29,115	89,284
Unique License Holders	29,065	86,982
Projected ACTIVE MOURNING DOVE HUNTERS	7,255	396
Number Sampled by Survey	4,861	7,826
Number Responded to Survey	3,126	5,272
Responded and Participated in Season	779	24
Responded but DID NOT HUNT	2,347	5,248
Survey Response Rate	64.3%	67.4%
No. Hunters Reporting Dove Days	779	24
Total Reported Dove Hunted Days	3,631	79
Average Days Hunted Doves	4.66	3.29
Total Reported Doves Bagged	13,659	467
Average Dove Bag for Season	17.53	19.46
Projected Days Dove Hunting	33,818	1,303
Projected No. Dove Hunters	7,255	396
Projected Dove Bag	127,217	7,705
Avg Days Hunted		4.59
TOTAL DOVE HARVEST =		134,922
Dove Hunter Mean Satisfaction Score *1*	5.01	5.83

* Nonresident number represents total number of small game licenses sold.

1 Based on scale of 1-7 with 1=very dissatisfied & 7=very satisfied.

STATEWIDE MOURNING DOVE HARVEST, 1981-2015



Mourning Dove Harvest Distribution by County 2015

COUNTY	HUNTER DISTRIBUTION				HARVEST DISTRIBUTION				Birds/Hunter **
	# Reported	# Projected	% of Total	# Proj w/ Unk *	# Reported	# Projected	% of Total	# Proj w/ Unk *	
Minnehaha	63	600	8.1	616	785	7,498	5.7	7,631	12.5
Pennington	34	324	4.3	333	558	5,330	4.0	5,424	16.5
Brown	32	305	4.1	313	347	3,314	2.5	3,373	10.9
Beadle	19	181	2.4	186	179	1,710	1.3	1,740	9.4
Codington	24	229	3.1	235	478	4,566	3.4	4,646	20.0
Brookings	30	286	3.8	294	450	4,298	3.2	4,374	15.0
Yankton	23	219	2.9	225	298	2,846	2.1	2,897	13.0
Davison	34	324	4.3	333	544	5,196	3.9	5,288	16.0
Lawrence	6	57	0.8	59	169	1,614	1.2	1,643	28.2
Aurora	7	67	0.9	68	213	2,034	1.5	2,070	30.5
Bennett	8	76	1.0	78	147	1,404	1.1	1,429	18.4
Bon Homme	18	172	2.3	176	226	2,159	1.6	2,197	12.6
Brule	8	76	1.0	78	159	1,519	1.1	1,546	19.9
Buffalo	1	10	0.1	10	40	382	0.3	389	40.1
Butte	5	48	0.6	49	50	478	0.4	486	10.0
Campbell	5	48	0.6	49	97	926	0.7	943	19.4
Charles Mix	33	314	4.2	323	1,056	10,086	7.6	10,265	32.1
Clark	4	38	0.5	39	65	621	0.5	632	16.3
Clay	7	67	0.9	68	359	3,429	2.6	3,490	51.4
Corson	3	29	0.4	29	20	191	0.1	194	6.7
Custer	6	57	0.8	59	100	955	0.7	972	16.7
Day	10	95	1.3	98	167	1,595	1.2	1,623	16.7
Deuel	13	124	1.7	127	308	2,942	2.2	2,994	23.7
Dewey	1	10	0.1	10	25	239	0.2	243	25.1
Douglas	9	86	1.2	88	183	1,748	1.3	1,779	20.4
Edmunds	7	67	0.9	68	148	1,414	1.1	1,439	21.2
Fall River	13	124	1.7	127	133	1,270	1.0	1,293	10.3
Faulk	5	48	0.6	49	56	535	0.4	544	11.2
Grant	6	57	0.8	59	110	1,051	0.8	1,069	18.4
Gregory	7	67	0.9	68	80	764	0.6	778	11.5
Haakon	4	38	0.5	39	68	649	0.5	661	17.0
Hamlin	12	114	1.5	117	212	2,025	1.5	2,061	17.7
Hand	4	38	0.5	39	52	497	0.4	505	13.0
Hanson	7	67	0.9	68	120	1,146	0.9	1,166	17.2
Harding	0	0	0.0	0	0	0	0.0	0	0
Hughes	49	467	6.3	479	1,597	15,254	11.5	15,524	32.7
Hutchinson	11	105	1.4	108	107	1,022	0.8	1,040	9.8
Hyde	2	19	0.3	20	5	48	0.0	49	2.5
Jackson	4	38	0.5	39	74	707	0.5	719	18.5
Jerauld	0	0	0.0	0	0	0	0.0	0	0
Jones	6	57	0.8	59	185	1,767	1.3	1,798	30.9
Kingsbury	9	86	1.2	88	161	1,538	1.2	1,565	17.9
Lake	20	191	2.6	196	444	4,241	3.2	4,316	22.3
Lincoln	32	305	4.1	313	350	3,343	2.5	3,402	11.0
Lyman	13	124	1.7	127	162	1,547	1.2	1,575	12.5
McCook	17	162	2.2	166	254	2,426	1.8	2,469	15.0
McPherson	4	38	0.5	39	15	143	0.1	146	3.8
Marshall	3	29	0.4	29	24	229	0.2	233	8.0
Meade	16	152	2.0	157	338	3,228	2.4	3,286	21.2
Mellette	2	19	0.3	20	25	239	0.2	243	12.5
Miner	9	86	1.2	88	189	1,805	1.4	1,837	21.1
Moody	10	95	1.3	98	107	1,022	0.8	1,040	10.7
Perkins	6	57	0.8	59	74	707	0.5	719	12.4
Potter	4	38	0.5	39	105	1,003	0.8	1,021	26.3
Roberts	8	76	1.0	78	42	401	0.3	408	5.3
Sanborn	6	57	0.8	59	62	592	0.4	603	10.4
Spink	12	114	1.5	117	233	2,225	1.7	2,265	19.5
Stanley	12	114	1.5	117	274	2,617	2.0	2,663	22.9
Sully	10	95	1.3	98	304	2,904	2.2	2,955	30.5
Tripp	15	143	1.9	147	350	3,343	2.5	3,402	23.4
Turner	18	172	2.3	176	218	2,082	1.6	2,119	12.1
Union	10	95	1.3	98	161	1,538	1.2	1,565	16.1
Walworth	6	57	0.8	59	18	172	0.1	175	3.0
Ziebach	0	0	0.0	0	0	0	0.0	0	0
Shannon	0	0	0.0	0	0	0	0.0	0	0
Todd	0	0	0.0	0	0	0	0.0	0	0
Unk/Unreported	21	200	-	-	246	2,350	-	-	11.7
TOTALS:	803	7,651	100%	7,651	14,126	134,922	100%	134,922	17.63

Last Revised: 15 June 2016

* Includes unknown county projection values by assuming unknown county values are distributed the same as reported county values. Total values may be different due to rounding.

** Calculation uses "# projected" values without correction for unknown/unreported county values.