

DUCKS (all species)

The 2016 duck season was open 24 September 2016 - 12 January 2017 statewide, although some units/zones may have opened later and/or closed sooner. A special Youth Waterfowl season was open 17-18 September for youth that had not reached age 16 by the first day of the season. The daily bag was 6 ducks, which could include no more than 5 mallards (up to 2 hens), 3 scaup, 2 redheads, 3 wood ducks, 2 canvasbacks, or 2 pintails. Hunters could also harvest 2 bonus blue-winged teal daily during the first 16 days of the season. The daily limit on mergansers was 5, which could include no more than 2 hooded mergansers, and the daily limit on coots was 15. The possession limit was three times the daily bag for each species. To hunt ducks, residents were required to hold small game, 1-day small game, adult, senior or junior combination, or youth small game licenses plus a migratory bird certification. Nonresidents were required to obtain a nonresident waterfowl license. All hunters age 16 and over were also required to obtain a federal waterfowl stamp.

In 2016, there were an estimated 14,365 hunters who hunted at least one day for ducks (10,533 residents, 3,832 nonresidents). From the survey responses, there were a projected total of 185,105 ducks harvested (153,749 by residents, 41,356 by nonresidents). Nonresidents reported harvesting 10% of their ducks within 20 miles of the Missouri River. Average bag for residents was 13.65, and for nonresidents ranged from 4.4 in unit 00X to 12.69 in unit 00A.

The five counties with the highest reported resident hunter numbers were Day, Clark, Brown, Kingsbury, and Hamlin. The five counties with the highest reported unit 00B nonresident hunter numbers were Day, Brown, Clark, Marshall, and Roberts.

When asked their satisfaction on the season, (1 being most dissatisfied, 7 being most satisfied), duck hunters reported an average satisfaction rating of 4.81 for residents and 4.75 for nonresidents.

The average days hunted by all hunters (7.18 residents, 4.70 nonresidents) projected to a total of 93,676 recreation days for the season.

Comparison of the 2011 - 2016 duck season statistics

Year	Resident Hunters					Nonresident Hunters				
	Number Hunters	Harvest	Ave Day Hunted	Ave Bag	Satisfaction	Number Hunters	Harvest	Ave Day Hunted	Ave Bag	Satisfaction
2011	13,394	213,642	7.34	15.95	5.34	4,132	51,098	4.58	12.37	5.51
2012	12,797	186,398	7.46	14.57	5.19	3,961	47,210	4.75	11.92	5.27
2013	13,456	195,935	7.41	14.56	5.09	3,842	47,873	4.53	12.46	5.31
2014	13,471	179,674	7.12	13.34	4.95	3,565	42,307	4.44	11.87	5.16
2015	11,994	169,183	7.22	14.11	4.87	3,937	44,562	4.54	11.32	4.90
2016	10,533	143,749	7.18	13.65	4.81	3,832	41,356	4.70	10.79	4.75

DUCK HARVEST PROJECTIONS FOR 2016

Revised: 1 June 2017

	NONRESIDENT TOTALS BY UNIT						Sum Estimates	Resident Total
	00A	00B	11A	00X	00Y	YW1		
No. Hunters Reporting Duck Days	133	1,158	4	216	289		1,800	1,370
Total Reported Duck Hunted Days	1,158	5,743	15	580	823		8,319	9,840
Average Days Hunted Ducks	8.71	4.96	3.75	2.69	2.85		4.70	7.18
Total Reported Ducks Bagged	1,688	13,769	22	954	2,353		18,786	18,697
Average Duck Bag for Season	12.69	11.89	5.50	4.42	8.14		10.79	13.65
Projected Days Duck Hunting	1,737	14,083	25	991	1,187		18,023	75,653
Projected No. Duck Hunters	200	2,840	7	369	417		3,832	10,533
Projected Duck Bag	2,532	33,764	37	1,630	3,393		41,356	143,749
Duck Harvest Reported Within 20 Miles of Missouri River	1,527	490	0	283	0		2,300	
Projected Ducks Bagged w/in 20 miles of Missouri River	2,291	1,202	0	483	0		3,976	N/A
TOTAL DUCK HARVEST =							185,105	
Duck Hunter Mean Satisfaction Score *1*	4.44	4.74	5.75	4.33	5.20		4.75	4.81

1 Based on scale of 1-7 with 1=very dissatisfied & 7=very satisfied

Resident Duck Harvest Distribution by County 2016

COUNTY	HUNTER DISTRIBUTION				HARVEST DISTRIBUTION				Birds/Hunter **
	# Reported	# Projected	% of Total	# Proj w/ Unk *	# Reported	# Projected	% of Total	# Proj w/ Unk *	
Minnehaha	54	415	4.2	440	636	4,890	3.6	5,106	11.8
Pennington	16	123	1.2	130	111	853	0.6	891	6.9
Brown	70	538	5.4	571	1,055	8,111	5.9	8,470	15.1
Beadle	20	154	1.5	163	196	1,507	1.1	1,574	9.8
Codington	52	400	4.0	424	577	4,436	3.2	4,633	11.1
Brookings	75	577	5.8	611	886	6,812	4.9	7,114	11.8
Yankton	22	169	1.7	179	366	2,814	2.0	2,939	16.6
Davison	7	54	0.5	57	70	538	0.4	562	10.0
Lawrence	11	85	0.9	90	71	546	0.4	570	6.5
Aurora	13	100	1.0	106	107	823	0.6	859	8.2
Bennett	7	54	0.5	57	40	308	0.2	321	5.7
Bon Homme	17	131	1.3	139	175	1,345	1.0	1,405	10.3
Brule	18	138	1.4	147	140	1,076	0.8	1,124	7.8
Buffalo	0	0	0.0	0	0	0	0.0	0	0
Butte	18	138	1.4	147	214	1,645	1.2	1,718	11.9
Campbell	4	31	0.3	33	61	469	0.3	490	15.3
Charles Mix	29	223	2.2	236	667	5,128	3.7	5,355	23.0
Clark	73	561	5.7	595	1,457	11,202	8.1	11,698	20.0
Clay	4	31	0.3	33	40	308	0.2	321	10.0
Corson	1	8	0.1	8	0	0	0.0	0	0.0
Custer	1	8	0.1	8	2	15	0.0	16	2.0
Day	100	769	7.7	815	1,905	14,646	10.6	15,295	19.1
Deuel	21	161	1.6	171	429	3,298	2.4	3,444	20.4
Dewey	2	15	0.2	16	5	38	0.0	40	2.5
Douglas	8	62	0.6	65	156	1,199	0.9	1,253	19.5
Edmunds	26	200	2.0	212	341	2,622	1.9	2,738	13.1
Fall River	15	115	1.2	122	210	1,615	1.2	1,686	14.0
Faulk	4	31	0.3	33	52	400	0.3	418	13.0
Grant	20	154	1.5	163	223	1,714	1.2	1,790	11.2
Gregory	1	8	0.1	8	10	77	0.1	80	10.0
Haakon	2	15	0.2	16	8	62	0.0	64	4.0
Hamlin	54	415	4.2	440	1,150	8,842	6.4	9,233	21.3
Hand	7	54	0.5	57	58	446	0.3	466	8.3
Hanson	10	77	0.8	82	106	815	0.6	851	10.6
Harding	5	38	0.4	41	35	269	0.2	281	7.0
Hughes	30	231	2.3	245	232	1,784	1.3	1,863	7.7
Hutchinson	11	85	0.9	90	79	607	0.4	634	7.2
Hyde	2	15	0.2	16	18	138	0.1	145	9.0
Jackson	3	23	0.2	24	13	100	0.1	104	4.3
Jerauld	4	31	0.3	33	80	615	0.4	642	20.0
Jones	2	15	0.2	16	12	92	0.1	96	6.0
Kingsbury	68	523	5.3	554	1,082	8,319	6.0	8,687	15.9
Lake	77	592	6.0	628	978	7,519	5.5	7,852	12.7
Lincoln	10	77	0.8	82	107	823	0.6	859	10.7
Lyman	6	46	0.5	49	39	300	0.2	313	6.5
McCook	44	338	3.4	359	646	4,967	3.6	5,187	14.7
McPherson	27	208	2.1	220	401	3,083	2.2	3,220	14.9
Marshall	32	246	2.5	261	309	2,376	1.7	2,481	9.7
Meade	8	62	0.6	65	87	669	0.5	699	10.9
Meillette	3	23	0.2	24	12	92	0.1	96	4.0
Miner	21	161	1.6	171	325	2,499	1.8	2,609	15.5
Moody	10	77	0.8	82	243	1,868	1.4	1,951	24.3
Perkins	10	77	0.8	82	66	507	0.4	530	6.6
Potter	8	62	0.6	65	178	1,369	1.0	1,429	22.3
Roberts	42	323	3.3	342	544	4,182	3.0	4,368	13.0
Sanborn	12	92	0.9	98	163	1,253	0.9	1,309	13.6
Spink	18	138	1.4	147	279	2,145	1.6	2,240	15.5
Stanley	11	85	0.9	90	68	523	0.4	546	6.2
Sully	8	62	0.6	65	95	730	0.5	763	11.9
Tripp	5	38	0.4	41	28	215	0.2	225	5.6
Turner	14	108	1.1	114	101	777	0.6	811	7.2
Union	10	77	0.8	82	73	561	0.4	586	7.3
Walworth	9	69	0.7	73	87	669	0.5	699	9.7
Ziebach	0	0	0.0	0	0	0	0.0	0	0
Shannon	0	0	0.0	0	0	0	0.0	0	0
Todd	0	0	0.0	0	0	0	0.0	0	0
Unk/Unreported	78	600	-	-	793	6,097	-	-	10.2
TOTALS:	1,370	10,533	100%	10,533	18,697	143,749	100%	143,749	13.65

Last Revised: 1 June 2017

* Includes unknown county projection values by assuming unknown county values are distributed the same as reported county values. Total values may be different due to rounding.

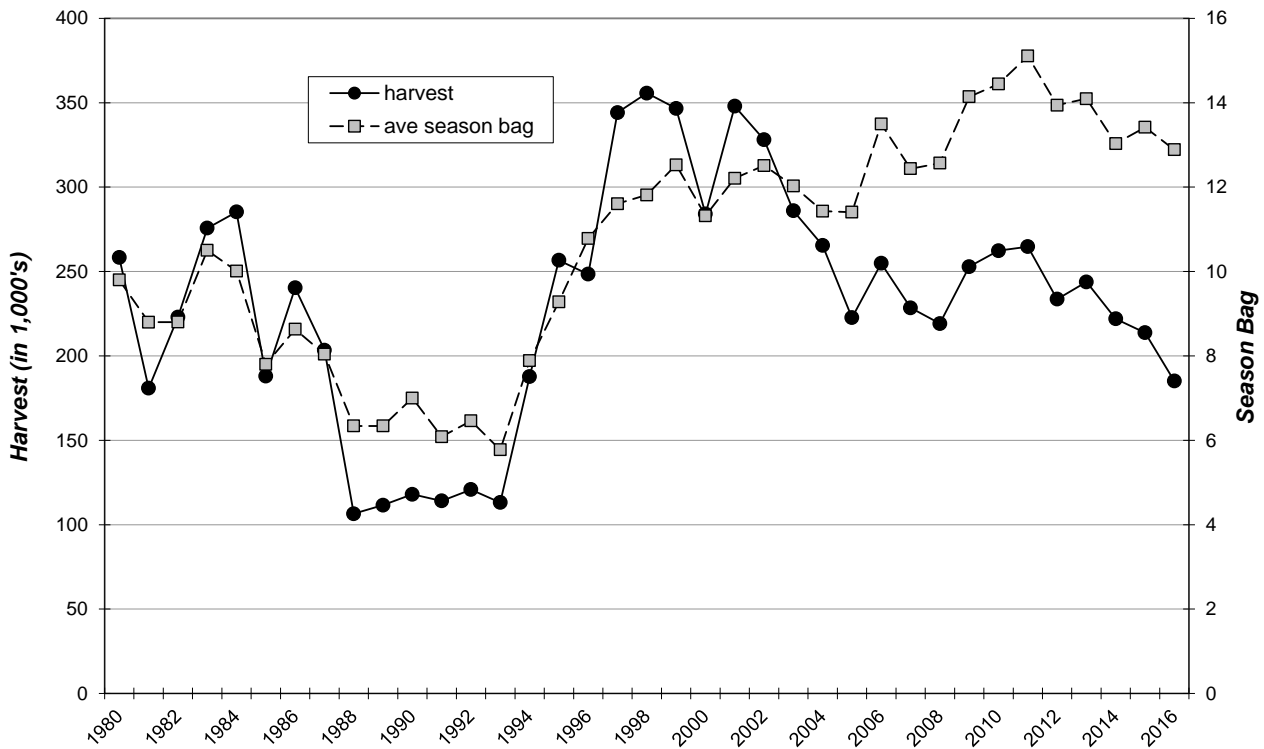
** Calculation uses "# projected" values without correction for unknown/unreported county values.

**2016 Reported Nonresident Duck Hunting
Distribution by County**

COUNTY	00A	00B	00X	00Y	11A	00B PERCENT	00X PERCENT	00Y PERCENT
Minnehaha	0	3	0	1	0	0.2%	0.0%	0.3%
Pennington	0	1	0	1	0	0.1%	0.0%	0.3%
Brown	0	118	10	16	0	9.6%	4.6%	5.5%
Beadle	0	13	0	0	0	1.1%	0.0%	0.0%
Codington	0	54	0	38	0	4.4%	0.0%	13.1%
Brookings	0	24	0	1	0	1.9%	0.0%	0.3%
Yankton	20	0	0	0	0	0.0%	0.0%	0.0%
Davison	0	12	0	0	0	1.0%	0.0%	0.0%
Lawrence	0	1	0	0	0	0.1%	0.0%	0.0%
Aurora	0	10	0	0	0	0.8%	0.0%	0.0%
Bennett	0	0	0	0	4	0.0%	0.0%	0.0%
Bon Homme	71	0	0	0	0	0.0%	0.0%	0.0%
Brule	1	29	0	0	0	2.3%	0.0%	0.0%
Buffalo	0	0	0	0	0	0.0%	0.0%	0.0%
Butte	0	2	0	0	0	0.2%	0.0%	0.0%
Campbell	0	8	8	0	0	0.6%	3.7%	0.0%
Charles Mix	22	4	0	0	0	0.3%	0.0%	0.0%
Clark	0	97	1	42	0	7.9%	0.5%	14.5%
Clay	9	1	0	0	0	0.1%	0.0%	0.0%
Corson	0	0	0	0	0	0.0%	0.0%	0.0%
Custer	0	0	0	0	0	0.0%	0.0%	0.0%
Day	0	316	2	113	0	25.6%	0.9%	39.1%
Deuel	0	7	0	2	0	0.6%	0.0%	0.7%
Dewey	0	3	0	0	0	0.2%	0.0%	0.0%
Douglas	1	3	0	0	0	0.2%	0.0%	0.0%
Edmunds	0	44	40	1	0	3.6%	18.5%	0.3%
Fall River	0	1	0	0	0	0.1%	0.0%	0.0%
Faulk	0	10	16	1	0	0.8%	7.4%	0.3%
Grant	0	5	0	2	0	0.4%	0.0%	0.7%
Gregory	0	0	0	0	0	0.0%	0.0%	0.0%
Haakon	0	0	3	0	0	0.0%	1.4%	0.0%
Hamlin	0	13	0	4	0	1.1%	0.0%	1.4%
Hand	0	3	0	0	0	0.2%	0.0%	0.0%
Hanson	0	2	0	0	0	0.2%	0.0%	0.0%
Harding	0	3	0	0	0	0.2%	0.0%	0.0%
Hughes	0	4	10	0	0	0.3%	4.6%	0.0%
Hutchinson	0	0	1	0	0	0.0%	0.5%	0.0%
Hyde	0	6	0	0	0	0.5%	0.0%	0.0%
Jackson	0	0	0	0	0	0.0%	0.0%	0.0%
Jerauld	0	6	0	0	0	0.5%	0.0%	0.0%
Jones	0	1	1	0	0	0.1%	0.5%	0.0%
Kingsbury	0	62	1	1	0	5.0%	0.5%	0.3%
Lake	0	11	0	0	0	0.9%	0.0%	0.0%
Lincoln	0	0	0	0	0	0.0%	0.0%	0.0%
Lyman	1	0	10	0	0	0.0%	4.6%	0.0%
McCook	0	2	0	0	0	0.2%	0.0%	0.0%
McPherson	0	57	54	0	0	4.6%	25.0%	0.0%
Marshall	0	92	0	31	0	7.4%	0.0%	10.7%
Meade	0	0	0	0	0	0.0%	0.0%	0.0%
Mellette	0	1	0	0	0	0.1%	0.0%	0.0%
Miner	0	10	0	0	0	0.8%	0.0%	0.0%
Moody	0	0	0	0	0	0.0%	0.0%	0.0%
Perkins	0	3	0	0	0	0.2%	0.0%	0.0%
Potter	0	8	14	0	0	0.6%	6.5%	0.0%
Roberts	0	83	1	29	0	6.7%	0.5%	10.0%
Sanborn	0	12	0	0	0	1.0%	0.0%	0.0%
Spink	0	36	0	0	0	2.9%	0.0%	0.0%
Stanley	0	3	9	0	0	0.2%	4.2%	0.0%
Sully	0	3	7	0	0	0.2%	3.2%	0.0%
Tripp	0	2	0	0	0	0.2%	0.0%	0.0%
Turner	0	3	0	0	0	0.2%	0.0%	0.0%
Union	6	0	0	0	0	0.0%	0.0%	0.0%
Walworth	0	12	17	0	0	1.0%	7.9%	0.0%
Ziebach	1	0	0	0	0	0.0%	0.0%	0.0%
Oglala Lakota	0	0	0	0	0	0.0%	0.0%	0.0%
Todd	0	0	0	0	0	0.0%	0.0%	0.0%
Unk/Unreported	1	31	11	6	0	2.5%	5.1%	2.1%
TOTALS:	133	1,235	216	289	1,873	100.0%	100.0%	100.0%

Last updated: 1 June 2017

STATEWIDE DUCK (all species) HARVEST, 1980-2016



STATEWIDE DUCK SEASON PARTICIPATION, 1980-2016

