

# **CANADA GEESE (all seasons)**

Information provided in this section pertains to the entire Canada goose harvest in South Dakota and combines information from all seasons. The next two sections report specifically on the Early Fall (September) and Special Bennett County seasons.

The 2016 Canada goose season was open from 3 September 2016 - 12 February 2017 statewide, although some units may have opened later and/or closed sooner. The daily bag was 15 geese prior to 1 October; and after that it was 8 geese. Possession was three times the daily bag. Resident hunters were separately licensed for one Special Canada goose unit in Bennett County. To hunt geese, residents were required to hold small game, 1-day small game, adult, senior or junior combination, or youth small game licenses plus a migratory bird certification. Nonresidents were required to obtain a nonresident waterfowl license. All hunters age 16 and over were also required to obtain a federal waterfowl stamp. Special Canada goose season hunters were required to apply for and receive Special Canada goose season licenses.

In 2016, there were an estimated 12,010 hunters who hunted at least one day for Canada geese (9,964 residents, 2,046 nonresidents). From the survey responses, there were a projected total of 91,294 Canada geese harvested (85,809 by residents, 5,485 by nonresidents). Average Canada goose bag for residents was 8.61, for nonresidents 2.77. An estimated 29,471 Canada geese were harvested within 20 miles of the Missouri River.

The five counties with the highest reported harvest by residents were Hughes, Day, Roberts, Clark, and Stanley, and by nonresidents in unit 00B were Day, Brown, Roberts, Kingsbury, and Clark.

When asked their satisfaction on the season, (1 being least satisfied, 7 being most satisfied), Canada goose hunters reported an average rating of 4.87 for residents and 4.86 for nonresidents. The average days hunted by all hunters (6.98 residents, 4.51 nonresidents) projected to a total of 78,818 recreation days for the season.

## Comparison of the 2007 - 2016 Canada goose harvest statistics

Year	<i>Resident Hunters</i>					<i>Nonresident Hunters</i>				
	<i>Number Hunters</i>	<i>Harvest</i>	<i>Ave Day Hunted</i>	<i>Ave Bag</i>	<i>Satisfaction</i>	<i>Number Hunters</i>	<i>Harvest</i>	<i>Ave Day Hunted</i>	<i>Ave Bag</i>	<i>Satisfaction</i>
2007	14,026	94,535	7.24	6.74	4.81	2,349	6,248	3.82	2.66	5.21
2008	13,463	97,068	7.21	7.21	5.03	2,483	6,381	3.89	2.57	5.24
2009	12,927	98,892	7.25	7.65	4.92	1,986	5,561	4.14	2.80	5.27
2010	13,552	123,188	7.53	9.09	5.19	2,198	6,440	4.45	2.93	5.50
2011	13,376	131,505	7.28	9.83	5.31	2,167	6,332	4.25	2.92	5.63
2012	13,725	157,363	7.61	11.47	5.19	2,277	7,054	4.37	3.10	5.44
2013	12,004	117,846	7.54	9.82	5.06	2,160	6,310	4.24	2.92	5.37
2014	12,130	97,956	6.92	8.08	4.96	1,969	5,193	4.31	2.76	5.22
2015	10,228	73,471	7.00	7.18	4.78	2,104	5,482	4.30	2.70	4.98
2016	9,964	85,809	6.98	8.61	4.87	2,046	5,485	4.51	2.77	4.86

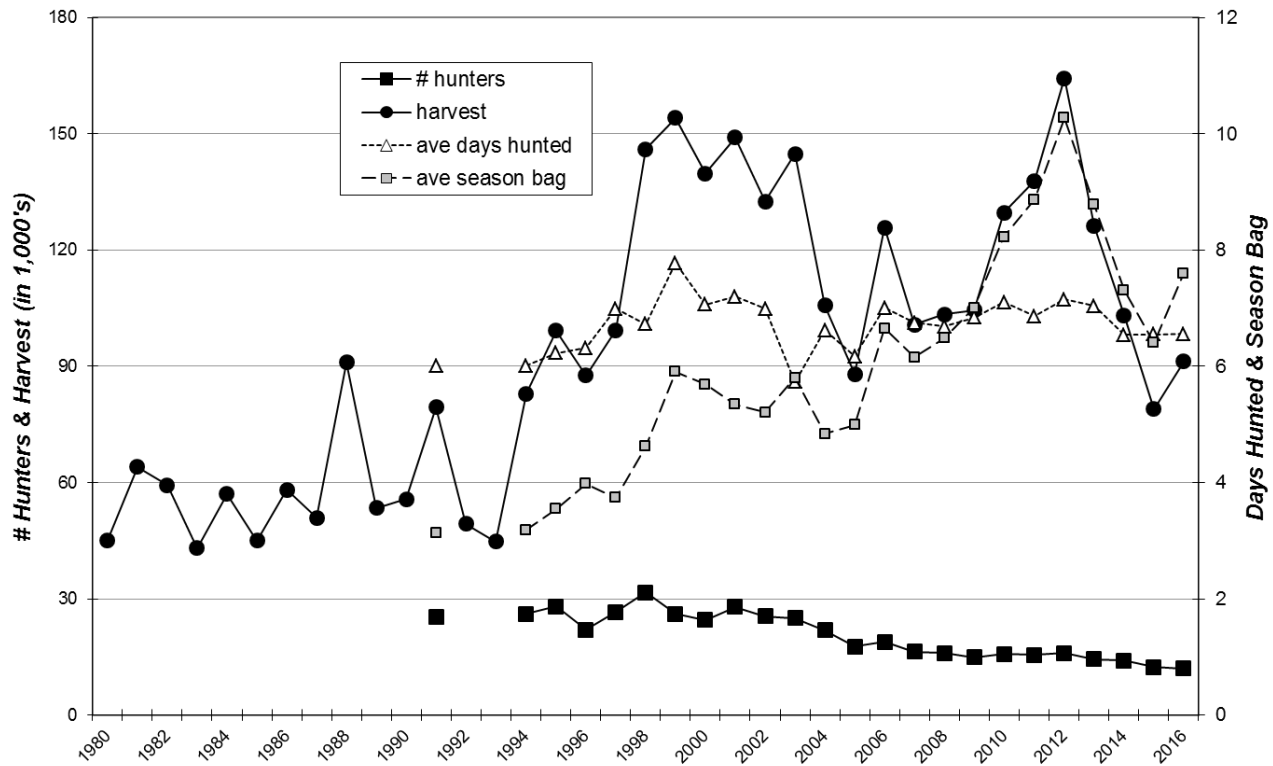
## CANADA GOOSE HARVEST PROJECTIONS FOR 2016

Revised: 1 June 2017

	NONRESIDENT TOTALS BY UNIT					Sum Estimates	Resident Total
	00A	00B	11A	00X	00Y		
No. Hunters Reporting Canada Goose Days	90	601	4	151	120	966	1,296
Total Reported Canada Goose Hunted Days	841	2,806	10	384	315	4,356	9,046
<b>Average Days Hunted Canada Geese</b>	<b>9.34</b>	<b>4.67</b>	<b>2.50</b>	<b>2.54</b>	<b>2.63</b>	<b>4.51</b>	<b>6.98</b>
Total Reported Canada Geese Bagged	408	1,435	18	547	270	2,678	11,161
<b>Average Canada Goose Bag for Season</b>	<b>4.53</b>	<b>2.39</b>	<b>4.50</b>	<b>3.62</b>	<b>2.25</b>	<b>2.77</b>	<b>8.61</b>
<b>Projected Days Canada Goose Hunting</b>	<b>1,262</b>	<b>6,881</b>	<b>17</b>	<b>656</b>	<b>454</b>	<b>9,269</b>	<b>69,549</b>
<b>Projected No. Canada Goose Hunters</b>	<b>135</b>	<b>1,474</b>	<b>7</b>	<b>258</b>	<b>173</b>	<b>2,046</b>	<b>9,964</b>
<b>Projected Canada Goose Bag</b>	<b>612</b>	<b>3,519</b>	<b>30</b>	<b>934</b>	<b>389</b>	<b>5,485</b>	<b>85,809</b>
Canada Geese Reported w/in 20 miles of Missouri River	383	108	0	468	0	959	3,620
<b>Projected Canada Geese Bagged w/in 20 miles of Missouri F</b>	<b>575</b>	<b>265</b>	<b>0</b>	<b>800</b>	<b>0</b>	<b>1,639</b>	<b>27,832</b>
<b>TOTAL CANADA GOOSE HARVEST ALL SEASONS = 91,294</b>							
<b>Canada Goose Hunter Mean Satisfaction Score *1*</b>	4.38	4.85	6.50	4.92	5.10	4.86	4.87

\*1\* Based on scale of 1-7 with 1=very dissatisfied & 7=very satisfied

## STATEWIDE CANADA GOOSE (all seasons) HARVEST, 1980-2016



## Resident Canada Goose Harvest Distribution by County 2016

COUNTY	HUNTER DISTRIBUTION				HARVEST DISTRIBUTION				Birds/Hunter **
	# Reported	# Projected	% of Total	# Proj w/ Unk *	# Reported	# Projected	% of Total	# Proj w/ Unk *	
Minnehaha	52	400	4.3	431	273	2,099	2.6	2,210	5.3
Pennington	13	100	1.1	108	92	707	0.9	745	7.1
Brown	56	431	4.7	464	462	3,552	4.4	3,740	8.3
Beadle	14	108	1.2	116	78	600	0.7	631	5.6
Codington	44	338	3.7	365	222	1,707	2.1	1,797	5.0
Brookings	41	315	3.4	340	353	2,714	3.3	2,857	8.6
Yankton	17	131	1.4	141	147	1,130	1.4	1,190	8.6
Davison	4	31	0.3	33	2	15	0.0	16	0.5
Lawrence	6	46	0.5	50	6	46	0.1	49	1.0
Aurora	5	38	0.4	41	14	108	0.1	113	2.8
Bennett	21	161	1.7	174	140	1,076	1.3	1,133	6.7
Bon Homme	10	77	0.8	83	58	446	0.5	469	5.8
Brule	21	161	1.7	174	190	1,461	1.8	1,538	9.0
Buffalo	2	15	0.2	17	55	423	0.5	445	27.5
Butte	13	100	1.1	108	89	684	0.8	720	6.8
Campbell	4	31	0.3	33	47	361	0.4	380	11.8
Charles Mix	38	292	3.2	315	441	3,391	4.2	3,570	11.6
Clark	51	392	4.2	423	473	3,637	4.5	3,829	9.3
Clay	3	23	0.2	25	12	92	0.1	97	4.0
Corson	2	15	0.2	17	8	62	0.1	65	4.0
Custer	0	0	0.0	0	0	0	0.0	0	0
Day	69	530	5.7	572	721	5,543	6.8	5,836	10.4
Deuel	25	192	2.1	207	354	2,722	3.3	2,865	14.2
Dewey	2	15	0.2	17	9	69	0.1	73	4.5
Douglas	6	46	0.5	50	47	361	0.4	380	7.8
Edmunds	19	146	1.6	158	128	984	1.2	1,036	6.7
Fall River	16	123	1.3	133	98	753	0.9	793	6.1
Faulk	5	38	0.4	41	94	723	0.9	761	18.8
Grant	21	161	1.7	174	330	2,537	3.1	2,671	15.7
Gregory	1	8	0.1	8	2	15	0.0	16	2.0
Haakon	1	8	0.1	8	0	0	0.0	0	0.0
Hamlin	40	308	3.3	332	339	2,606	3.2	2,744	8.5
Hand	3	23	0.2	25	2	15	0.0	16	0.7
Hanson	9	69	0.7	75	31	238	0.3	251	3.4
Harding	7	54	0.6	58	41	315	0.4	332	5.9
Hughes	174	1,338	14.5	1,442	1,594	12,255	15.0	12,903	9.2
Hutchinson	8	62	0.7	66	35	269	0.3	283	4.4
Hyde	2	15	0.2	17	1	8	0.0	8	0.5
Jackson	2	15	0.2	17	7	54	0.1	57	3.5
Jerauld	3	23	0.2	25	5	38	0.0	40	1.7
Jones	3	23	0.2	25	20	154	0.2	162	6.7
Kingsbury	43	331	3.6	356	231	1,776	2.2	1,870	5.4
Lake	38	292	3.2	315	172	1,322	1.6	1,392	4.5
Lincoln	15	115	1.2	124	185	1,422	1.7	1,497	12.3
Lyman	7	54	0.6	58	51	392	0.5	413	7.3
McCook	19	146	1.6	158	67	515	0.6	542	3.5
McPherson	21	161	1.7	174	116	892	1.1	939	5.5
Marshall	32	246	2.7	265	155	1,192	1.5	1,255	4.8
Meade	9	69	0.7	75	72	554	0.7	583	8.0
Mellette	1	8	0.1	8	1	8	0.0	8	1.0
Miner	14	108	1.2	116	209	1,607	2.0	1,692	14.9
Moody	7	54	0.6	58	42	323	0.4	340	6.0
Perkins	11	85	0.9	91	54	415	0.5	437	4.9
Potter	4	31	0.3	33	141	1,084	1.3	1,141	35.3
Roberts	46	354	3.8	381	741	5,697	7.0	5,998	16.1
Sanborn	13	100	1.1	108	32	246	0.3	259	2.5
Spink	16	123	1.3	133	328	2,522	3.1	2,655	20.5
Stanley	30	231	2.5	249	574	4,413	5.4	4,646	19.1
Sully	16	123	1.3	133	236	1,814	2.2	1,910	14.8
Tripp	5	38	0.4	41	24	185	0.2	194	4.8
Turner	9	69	0.7	75	52	400	0.5	421	5.8
Union	9	69	0.7	75	80	615	0.8	648	8.9
Walworth	3	23	0.2	25	16	123	0.2	130	5.3
Ziebach	0	0	0.0	0	0	0	0.0	0	0
Shannon	0	0	0.0	0	0	0	0.0	0	0
Todd	1	8	0.1	8	2	15	0.0	16	2.0
Unk/Unreported	94	723	-	-	560	4,305	-	-	6.0
<b>TOTALS:</b>	<b>1,296</b>	<b>9,964</b>	<b>100%</b>	<b>9,964</b>	<b>11,161</b>	<b>85,809</b>	<b>100%</b>	<b>85,809</b>	<b>8.61</b>

Last Revised: 6 June 2017

\* Includes unknown county projection values by assuming unknown county values are distributed the same as reported county values. Total values may be different due to rounding.

\*\* Calculation uses "# projected" values without correction for unknown/unreported county values.