

ARCHERY ELK

A total of 280 resident licenses were issued for the 2016 Archery Elk season. All license holders were sent a survey at the end of the season and 241 responded for an 87% response rate. Approximately 76% responded through the Internet.

Respondents reported hunting an average of 11.11 days for a total of 3,111 days of recreation for the season. The projected harvest was 57 bulls and 25 cows for an overall success rate of 29%.

Hunter satisfaction was based on a numerical scale from 1 (very dissatisfied) to 7 (very satisfied) and averaged 5.40 for the season. Approximately 96% of responding hunters reported hunting on public land, 3% on private land they did not own, and 1% on private land they owned.

Prior to 2002 it was assumed that any hunter that did not report harvesting an elk at the mandatory check-in was unsuccessful, and success was measured by dividing the number of hunters that reported harvesting an elk by the total number of tags issued.

Summary comparison of the 2007-2016 Archery Elk seasons

Year	# Apps 1 st Choice	Licenses Sold	Harvest			Success Rate	Avg. Days Hunted	Average Satisfaction
			Bulls	Cows	Total			
2007	3,491	237	41	22	63	27%	10.58	5.27
2008	3,660	202	47	9	56	28%	10.87	5.31
2009	3,826	185	52	9	61	33%	10.29	5.52
2010	3,761	144	34	6	40	28%	11.88	5.16
2011	3,486	126	24	8	32	25%	11.42	5.01
2012	3,228	97	33	4	38	39%	11.94	5.34
2013	3,952	107	33	3	36	34%	11.97	5.59
2014	4,256	106	38	4	42	40%	11.68	5.61
2015	4,761	196	55	12	66	34%	11.74	5.39
2016	4,965	280	57	25	82	29%	11.11	5.40

2016 Archery Elk Harvest Projections

Last Revised: 27 March 2017

Unit/Type	Resident Licenses					Harvest Projections							Elk Shot Not Recovered	Avg Satisfctn Score	Avg Days Hunted	Land Hunted Most		
	Appl. 1st Choice *	Avail.	Sold	Resp.	Success	Bull	Cow	Total Elk		CI (95%)	Public	Own				Private		
H1A-21	603	25	25	88%	27%	7	0	0	0	7	+/-2	5	5.5	11.7	22	0	0	
H1A-23	8	10	8	100%	0%	0	0	0	0	0	+/-	0	4.0	8.1	6	0	0	
H2A-21	3,638	90	88	91%	48%	41	1	0	0	42	+/-3	14	6.0	12.8	80	1	0	
H2A-23	82	115	112	82%	21%	0	20	1	2	23	+/-4	2	5.2	9.5	85	0	4	
H3A-21	448	25	25	88%	18%	5	0	0	0	5	+/-1	5	5.5	13.4	19	2	2	
H3A-23	9	10	10	90%	22%	0	2	0	0	2	+/-1	0	4.5	8.4	6	0	1	
H5A-21	37	2	2	50%	0%	0	0	0	0	0	+/-	0	1.0	15.0	2	0	0	
H7A-21	135	5	5	100%	60%	3	0	0	0	3	+/-0	0	6.4	13.2	4	0	0	
H7A-23	5	5	5	80%	0%	0	0	0	0	0	+/-	0	4.0	10.3	5	0	0	
Totals	4,965	287	280	86.7%	29.4%	56	23	1	2	82	+/- 11	26	5.40	11.11	229	3	7	

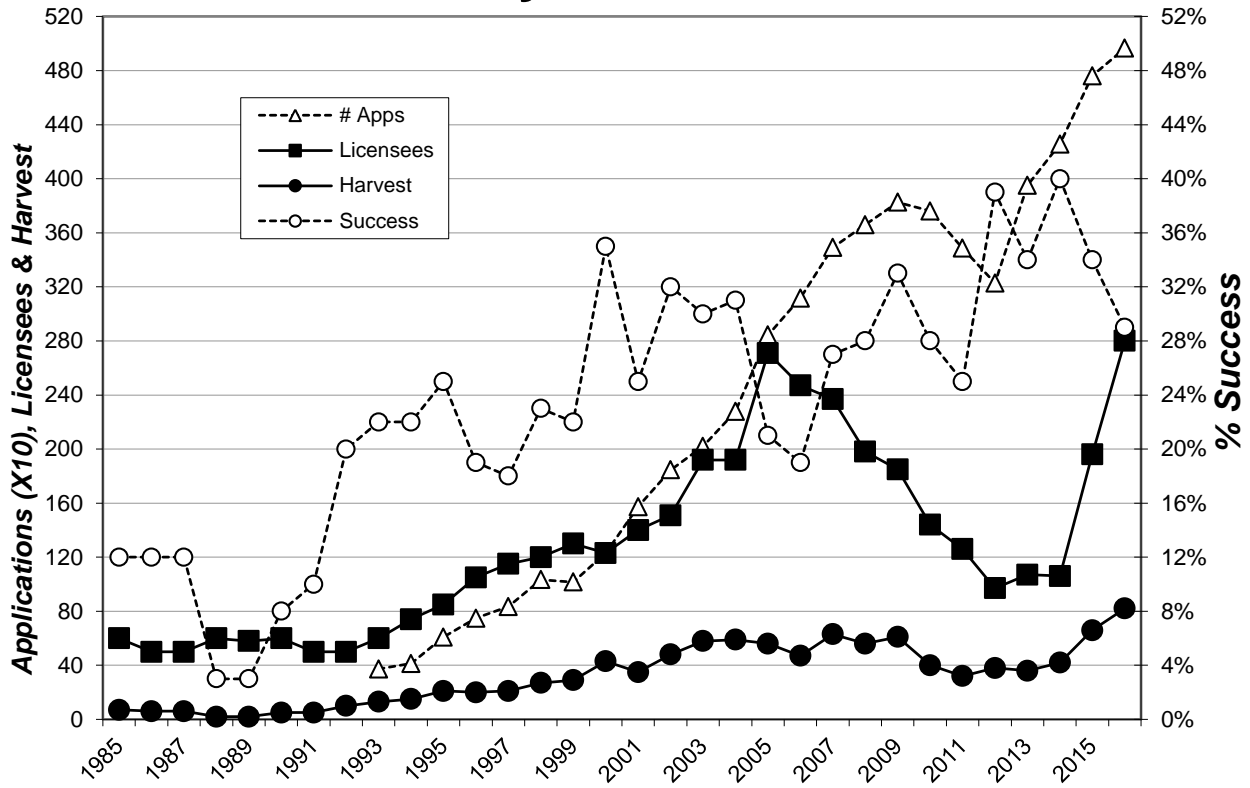
The response rate for all units combined is: 86.7%

Satisfaction scale of 1=very dissatisfied to 7=very satisfied.

* Number of 1st drawing applicants with that unit as 1st choice.

96% 1% 3%

Archery Elk 1985-2016



BLACK HILLS FIREARM ELK

A total of 1,745 licenses were issued for the 2016 Black Hills Firearm Elk season. All license holders were sent a survey at the end of the season and 1,560 responded for a 90% response rate. Approximately 68% responded through the Internet.

Respondents reported hunting an average of 4.59 days which projects to a total of 8,010 days of recreation for the season. The projected harvest was 363 bulls and 724 cows for an overall success rate of 62%.

Hunter satisfaction was based on a numerical scale from 1 (very dissatisfied) to 7 (very satisfied) and averaged 5.42 for the season. Approximately 91% of responding hunters reported hunting on public land, 4% on private land they did not own, and 5% on private land they owned.

Prior to 2002 it was assumed that any hunter that did not report harvesting an elk at the mandatory check in was unsuccessful, and success was measured by dividing the number of hunters that reported harvesting an elk by the total number of tags issued.

Summary comparison of the 2007-2016 Black Hills Firearm Elk seasons

Year	# Apps 1st Choice	Licenses Sold	Harvest			Success Rate	Avg. Days Hunted	Average Satisfaction
			Bulls	Cows	Total			
2007	13,916	2,075	559	505	1,064	51%	6.77	4.52
2008	13,083	1,675	473	390	863	52%	6.57	4.62
2009	12,915	1,366	404	379	783	57%	6.38	4.70
2010	12,197	1,059	300	260	560	53%	6.64	4.47
2011	11,031	866	299	173	472	55%	6.80	4.64
2012	9,665	570	291	125	416	73%	6.37	5.30
2013	11,274	620	272	103	374	60%	6.63	4.65
2014	11,461	664	295	178	472	71%	5.85	5.46
2015	12,126	922	312	345	657	71%	6.66	5.54
2016	12,692	1,745	363	724	1,087	62%	4.59	5.42

2016 Black Hills Firearm Elk Harvest Projections

Last Revised: 27 March 2017

Unit/Type	Resident Licenses					Harvest Projections						Elk Shot Not Recovered	Avg Satisfctn Score	Avg Days Hunted	Land Hunted Most		
	Appl. 1st					Bulls	Cows	Calves	Cow Calves	Total Elk Harvested	CI (95%)				Public	Own	Other Private
	Choice *	Avail.	Sold	Resp.	Success												
H1A-21	1,127	75	75	91%	72%	49	4	0	0	54	+/-3	3	5.70	9.3	67	1	1
H1B-23	64	30	35	83%	41%	0	13	1	0	14	+/-3	1	4.46	5.4	29	0	0
H2A-21	8,990	250	249	90%	88%	198	19	1	2	220	+/-3	9	6.11	5.9	221	10	3
H2B-23	333	200	206	92%	59%	2	110	3	7	122	+/-4	5	5.37	4.6	163	1	5
H2C-23	93	150	154	87%	44%	0	60	2	6	68	+/-5	1	4.91	4.2	118	0	2
H2D-23	8	50	55	85%	43%	0	15	1	7	23	+/-3	1	4.54	3.6	41	0	0
H2E-23	152	200	204	94%	49%	0	87	3	11	101	+/-4	3	4.96	4.5	171	0	0
H2F-23	98	200	205	91%	73%	0	139	4	6	149	+/-4	9	5.79	3.2	186	0	0
H2G-23	26	125	130	82%	64%	0	72	4	7	83	+/-5	4	6.11	2.1	108	0	0
H2H-23	12	25	25	96%	58%	0	14	1	0	15	+/-1	0	5.00	4.4	23	0	1
H2I-23	1	25	30	87%	58%	0	17	0	0	17	+/-2	0	5.26	3.2	23	0	0
H2J-23	0	25	30	87%	81%	0	21	0	3	24	+/-2	1	5.96	2.4	27	0	0
H3A-21	1,271	80	80	94%	83%	58	9	0	0	66	+/-2	3	5.38	5.8	33	31	12
H3B-23	23	15	15	73%	36%	0	4	1	0	5	+/-2	1	5.09	4.7	10	0	0
H3C-23	7	15	15	93%	36%	0	5	0	0	5	+/-1	0	4.83	4.5	10	0	0
H3D-23	2	15	15	73%	18%	0	3	0	0	3	+/-2	0	4.67	2.6	10	0	1
H3E-23	30	50	50	88%	43%	0	18	1	2	22	+/-3	3	4.80	5.7	35	1	8
H3F-23	6	50	50	92%	33%	0	14	1	1	16	+/-2	1	4.37	4.2	22	0	13
H3G-23	4	50	50	92%	61%	0	22	1	8	30	+/-2	1	5.82	2.6	23	2	16
H4A-21	31	8	8	100%	88%	7	0	0	0	7	+/-0	0	5.50	3.5	1	2	5
H5A-21	66	5	5	100%	80%	3	1	0	0	4	+/-0	0	5.40	12.4	4	1	0
H7A-21	297	20	20	80%	81%	16	0	0	0	16	+/-2	0	5.75	7.4	15	4	1
H7B-23	13	20	24	92%	59%	0	14	0	0	14	+/-1	4	5.48	6.8	21	0	1
H9A-21	30	5	5	100%	60%	3	0	0	0	3	+/-0	0	4.60	9.8	1	2	1
H9B-23	8	10	10	90%	44%	1	1	0	2	4	+/-1	1	5.22	5.4	3	3	2
Totals	12,692	1,698	1,745	89.6%	62.3%	337	662	26	62	1,087	+/- 55	54	5.42	4.59	1,362	60	76

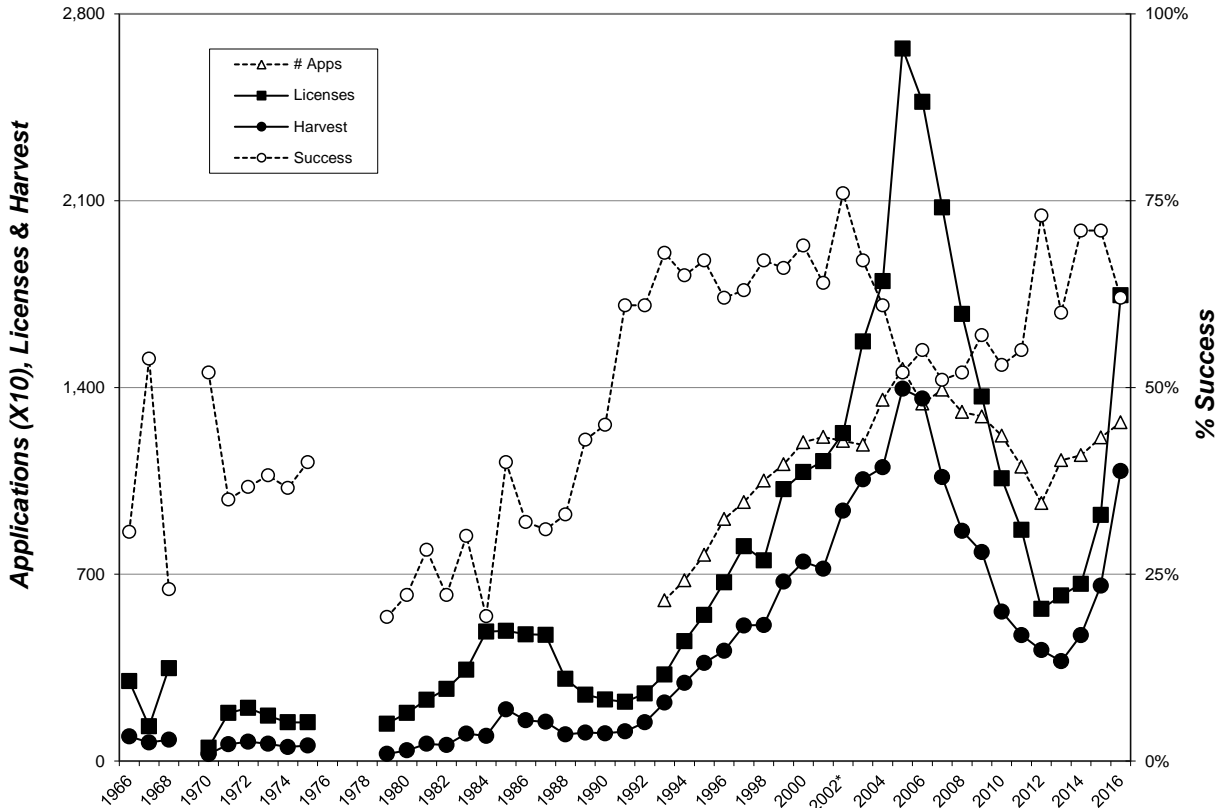
The response rate for all units combined is: 89.6%

Satisfaction scale of 1=very dissatisfied to 7=very satisfied.

* Number of 1st drawing applicants with that unit as 1st choice.

91% 4% 5%

Black Hills Firearm Elk 1966-2016



PRAIRIE FIREARM ELK

A total of 148 licenses were issued for the 2016 Prairie Firearm Elk season. All license holders were sent a survey at the end of the season and 123 responded for an 83% response rate. Approximately 55% responded through the Internet.

Respondents reported hunting an average of 4.76 days for a total of 704 days of recreation. The projected harvest was 32 bulls and 27 cows for an overall success rate of 40%.

Hunter satisfaction was based on a numerical scale from 1 (very dissatisfied) to 7 (very satisfied) and averaged 4.68 for the season.

Approximately 13% of responding hunters reported hunting mostly on public land, 71% on private land they did not own, and 16% on private land they owned.

Summary comparison for 2007-2016 Prairie Firearm Elk seasons

YEAR	Licenses	Harvest			Success	Avg. Days Hunted	Average Satisfaction
	Sold	Bulls	Cows	Total			
2007	76	19	16	35	46%	5.87	4.58
2008	76	18	17	35	46%	7.46	4.29
2009	133	29	22	51	38%	5.31	4.17
2010	134	24	27	51	38%	3.92	4.00
2011	128	20	15	35	27%	4.03	4.02
2012	97	26	20	46	47%	5.22	4.72
2013	96	18	13	30	32%	4.81	4.15
2014	92	33	25	59	64%	3.73	5.31
2015	98	29	25	54	55%	4.59	5.34
2016	148	32	27	60	40%	4.76	4.68

2016 Prairie Firearm Elk Harvest Projections

Last Revised: 27 March 2017

Unit/Type	Resident Licenses				Harvest Projections							Elk Shot Not Recovered	Avg Satisfctn Score	Avg Days Hunted	Land Hunted Most		
	Appl. 1st		Resp.	Success	Bull			Cow		Total Elk Harvested	CI (95%)				Public	Own	Private
	Choice *	Avail.			Sold	Bulls	Cows	Calves	Calves								
09A-21	452	10	10	60%	67%	7	0	0	0	7	+/-2	0	7.0	4.0	0	5	3
09A-23	64	40	40	75%	17%	0	5	1	0	7	+/-3	0	3.2	2.9	0	0	19
11A-23	14	10	10	80%	38%	0	4	0	0	4	+/-2	0	4.4	2.1	0	0	8
11B-21	485	12	12	92%	64%	8	0	0	0	8	+/-1	0	5.9	7.0	3	3	3
11C-21	255	12	12	92%	73%	8	1	0	0	9	+/-1	0	4.9	4.7	0	2	9
11D-23	61	20	20	85%	59%	0	12	0	0	12	+/-2	1	6.6	2.4	1	1	13
15A-21	277	10	11	100%	45%	5	0	0	0	5	+/-0	1	6.4	6.6	0	2	7
15A-23	19	10	8	100%	13%	0	1	0	0	1	+/-0	0	2.9	7.5	0	0	7
27A-21	621	15	15	93%	29%	4	0	0	0	4	+/-1	0	4.1	8.3	3	3	3
27A-23	24	10	10	70%	43%	0	3	0	1	4	+/-2	0	3.3	8.3	6	0	1
Totals	2,272	149	148	83.1%	40.4%	31	26	1	1	60	+/- 13	2	4.68	4.76	13	17	75
The response rate for all units combined is:															13%	16%	71%
Satisfaction scale of 1=very dissatisfied to 7=very satisfied.																	
* Number of 1st drawing applicants with that unit as 1st choice.																	

CUSTER STATE PARK ARCHERY ELK

A total of 3 resident licenses were issued for the 2016 Custer State Park Early Archery Elk season which was open from September 1-30. There was no Late CSP Archery season in 2016.

Respondents reported hunting an average of 15.0 days for a total of 45 days of recreation. One hunter reported harvesting an adult bull and one hunter reported shooting an elk that he/she was unable to recover. Hunter satisfaction was based on a numerical scale from 1 (very dissatisfied) to 7 (very satisfied) and averaged 6.00 for the season.

Summary comparison of the 2007-2016 CSP Archery elk seasons

<i>Year</i>	<i>Applications</i>	<i>Licenses</i>	<i>Bull Harvest</i>	<i>Cow Harvest</i>	<i>Success</i>	<i>Avg. Days Hunted</i>	<i>Average Satisfaction</i>
2007	4,862	58	3	1	8%	9.30	NA
2008	5,083	58	8	0	16%	8.74	NA
2009	5,141	58	5	3	15%	10.4	NA
2010	4,898	35	0	0	0%	11.2	NA
2011	3,863	18	1	0	6%	7.8	NA
2012	2,077	3	0	0	0%	14.0	NA
2013	2,740	3	3	0	100%	9.3	NA
2014	3,023	4	4	0	100%	8.8	7.00
2015	3,600	4	3	0	75%	16.3	6.50
2016	3,707	3	1	0	33%	15.0	6.00

CUSTER STATE PARK FIREARM ANY ELK

A total of 9 resident licenses were issued for the 2016 Custer State Park Firearm Any Elk season which was open from September 17 – October 2.

Respondents reported hunting an average of 2.8 days for a total of 25 days of recreation. All hunters responded and all but one reported harvesting adult bulls. One hunter reported shooting an elk that he/she was unable to recover. Hunter satisfaction was based on a numerical scale from 1 (very dissatisfied) to 7 (very satisfied) and averaged 6.56 for the season.

Summary comparison of the 2007-2016 CSP Firearm Any elk seasons

<i>Year</i>	<i>Applications</i>	<i>Licenses</i>	<i>Bull Harvest</i>	<i>Cow Harvest</i>	<i>Success</i>	<i>Avg. Days Hunted</i>	<i>Average Satisfaction</i>
2007	11,374	41	37	0	90%	4.5	NA
2008	10,998	36	35	0	97%	3.9	NA
2009	10,823	36	30	1	86%	5.7	NA
2010	10,145	21	14	2	76%	NA	NA
2011	8,019	11	10	0	91%	5.50	NA
2012	6,582	4	4	0	100%	1.75	NA
2013	7,860	4	3	1	100%	2.00	NA
2014	8,084	4	4	0	100%	1.00	7.00
2015	9,136	8	8	0	100%	1.90	6.88
2016	8,958	9	8	0	89%	2.80	6.56

CUSTER STATE PARK ANTLERLESS ELK

A total of 20 resident licenses were issued for the 2016 Custer State Park Antlerless Elk season which was open from October 8-16 and October 22-30.

Respondents reported hunting an average of 2.2 days for a total of 44 days of recreation. All hunters responded and all but two reported harvesting cows. Hunter satisfaction was based on a numerical scale from 1 (very dissatisfied) to 7 (very satisfied) and averaged 6.20 for the season.

Summary comparison of the 2007-2016 CSP Antlerless elk seasons

<i>Year</i>	<i>Applications</i>	<i>Licenses</i>	<i>Bull Harvest</i>	<i>Cow Harvest</i>	<i>Success</i>	<i>Avg. Days Hunted</i>	<i>Average Satisfaction</i>
2007	3,763	60	1	31	53%	3.3	NA
2008	3,646	40	2	21	55%	2.8	NA
2009	3,548	20	0	19	95%	2.5	NA
2010	3,192	5	0	4	80%	NA	NA
2011-15	Closed						
2016	3,138	20	0	18	90%	2.20	6.20

2016 Custer State Park Antlerless Elk Harvest Projections

Last Revised: 27 March 2017

<i>Unit/Type</i>	<i>Resident Licenses</i>					<i>Harvest Projections</i>						<i>Elk Shot Not Recovered</i>	<i>Avg Satisfctn Score</i>	<i>Avg Days Hunted</i>
	<i>Appl. 1st Choice *</i>	<i>Avail.</i>	<i>Sold</i>	<i>Resp.</i>	<i>Success</i>	<i>Bull</i>	<i>Cow</i>	<i>Total Elk</i>	<i>Elk Shot Not Recovered</i>	<i>Cl (95%)</i>				
CU1-23	2,210	10	10	100%	100%	0	10	0	0	10	+/-0	2	6.00	2.8
CU2-23	928	10	10	100%	80%	0	7	0	1	8	+/-0	0	6.40	1.6
Totals	3,138	20	20	100.0%	90.0%	0	17	0	1	18	+/-0	2	6.20	2.20

* Number of 1st drawing applicants with that unit as 1st choice.